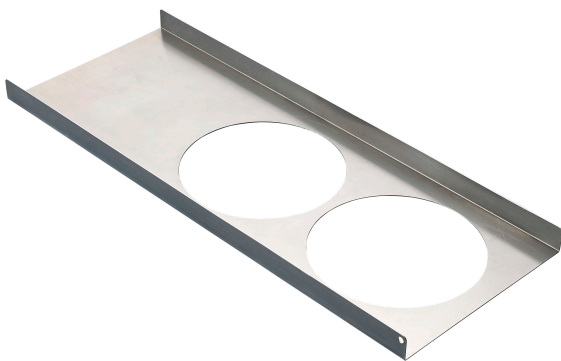


# MNT-ICP-ADC Suspension Ceiling Support Kit for AUTODOME in-ceiling cameras

www.boschsecurity.com



**BOSCH**  
Invented for life



- ▶ Load-bearing bridge design eliminates tile sag
- ▶ Fast and simple installation
- ▶ For use with AUTODOME VG5-100/600, NEZ4000/5000, and VG5-7000 series PTZ dome cameras

The MNT-ICP-ADC suspension ceiling support kit incorporates a load-bearing bridge design which eliminates tile sag by distributing the camera's weight evenly to the ceiling support system. The bridge design is also faster and simpler to install than traditional "T-bar" camera supports.

This suspension ceiling support kit fits the following series of AUTODOME in-ceiling cameras:

- VG5-100 (analog)
- VG5-600 (analog)
- NEZ-4000 (IP)
- NEZ-5000 (IP)
- VG5-7000 (IP)

## Installation/configuration notes



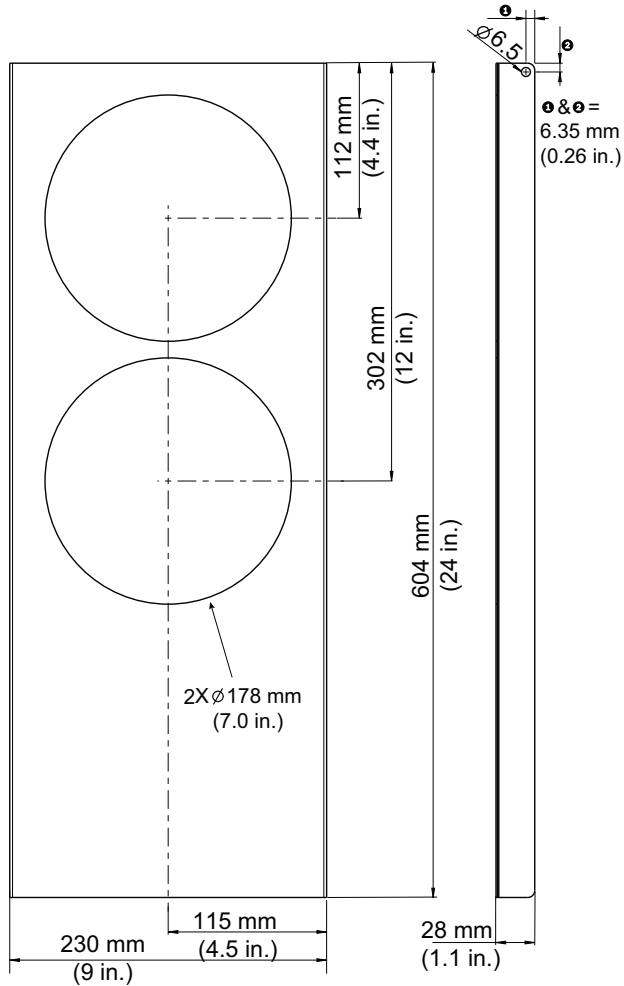
*Example installation: in-ceiling AUTODOME IP 5000 HD camera clamped to MNT-ICP-ADC on top of ceiling tile*

## Parts included

1	MNT-ICP-ADC
1	Quick Installation Guide

**Technical specifications**

Dimensions	604 mm x 230 mm x 28 mm (24 in. x 9 in. x 1 in.)
Weight	0.294 kg (0.65 lb)
Construction Material	Aluminum
Standard Color / Finish	(Unpolished aluminum)



**Ordering information**

**MNT-ICP-ADC Suspension Ceiling Support Kit for AUTODOME in-ceiling cameras**

Suspension ceiling support kit for AUTODOME IP 4000/5000/7000 AND VG5-100/600 series in-ceiling cameras

Order number **MNT-ICP-ADC**

**Represented by:**

**North America:**

Bosch Security Systems, Inc.  
130 Perinton Parkway  
Fairport, New York, 14450, USA  
Phone: +1 800 289 0096  
Fax: +1 585 223 9180  
security.sales@us.bosch.com  
www.boschsecurity.us

**Europe, Middle East, Africa:**

Bosch Security Systems B.V.  
P.O. Box 80002  
5617 BA Eindhoven, The Netherlands  
Phone: + 31 40 2577 284  
Fax: +31 40 2577 330  
emea.securitysystems@bosch.com  
www.boschsecurity.com

**Asia-Pacific:**

Robert Bosch (SEA) Pte Ltd, Security  
Systems  
11 Bishan Street 21  
Singapore 573943  
Phone: +65 6571 2808  
Fax: +65 6571 2699  
apr.securitysystems@bosch.com  
www.boschsecurity.asia

**China:**

Bosch (Shanghai) Security Systems Ltd.  
203 Building, No. 333 Fuquan Road  
North IBP  
Changning District, Shanghai  
200335 China  
Phone +86 21 22181111  
Fax: +86 21 22182398  
www.boschsecurity.com.cn

**Latin America and Caribbean:**

Robert Bosch Ltda Security Systems Division  
Via Anhanguera, Km 98  
CEP 13065-900  
Campinas, Sao Paulo, Brazil  
Phone: +55 19 2103 2860  
Fax: +55 19 2103 2862  
latam.boschsecurity@bosch.com  
www.boschsecurity.com