



2016 Evanesce Plus Series Product Brochure

The Evanesce Plus is a large in-ceiling projection screen suitable for big size rooms.



Evanesce Plus Series



The Evanesce Plus is a large in-ceiling projection screen suitable for big size rooms.



Screen Material

- MaxWhite Fiberglass front projection material with black backing
- 1.1 Gain with wide 180° viewing angle
- Black masking borders enhance picture contrast
- Flame Retardant: Complies with NFPA 701 Standards
- Active 3D and 4K Ultra HD Ready

Housing Finish and Installation

- Extra wide and heavy-duty aluminum housing is strong and moisture resistant
- Concealed in-ceiling front projection screen for large size rooms
- Installation kit included for above ceiling access

Control System

- Internal Radio Frequency and Infrared receivers with IR and RF remotes included
- Low voltage 3-way position wall switch
- Optional in-wall up/down switch, wireless 5-12 volt trigger
- RJ45 port allows 3rd party control systems integration

Quality and Reliability

- Tubular motor allows swift operation with a superior weight tolerance and operational lifespan
- 2-year warranty
- 3-year warranty for ENR-G (Educational, Non-profit, Religious or Government/Military) - US only



Evanesce Plus Series

Model	Screen Diag. & Aspect Ratio	View Height (in)	View Width (in)	View Height (cm)	View Width (cm)	N.W. (lbs.)	G.W. (lbs.)	N.W. (kgs)	G.W. (Kgs)	Packaging Dimensions (LxHxW)	Gain	Screen Material
IHome150VW2-E12	150"(4:3)	90.0	120.0	228.6	304.8	59.8	87.9	27.1	39.9	134"x11"x11"	1.1	MaxWhite FG
IHome180VW2-E12	180"(4:3)	108.0	144.0	274.3	365.8	82.6	106.8	37.6	48.5	157.56"x11.02"x11.42"	1.1	MaxWhite FG
IHome200VW2-E8	200"(4:3)	120.0	160.0	304.8	406.4	109.4	127.4	49.6	57.8	173"x10.5"x11"	1.1	MaxWhite FG
IHome150HW2-E12	150" (16:9)	73.6	130.7	186.9	332.0	66.8	79.4	30.4	36.1	157"x10.6"x11.2"	1.1	MaxWhite FG
IHome180HW2-E12	180" (16:9)	88.3	156.9	224.3	398.5	78.7	112.6	35.7	51.1	171.7"x11.2"x11.8"	1.1	MaxWhite FG
IHome200HW2-E6	200" (16:9)	98.0	174.0	248.9	442.0	111.2	138.7	50.5	63.1	187.70"x10.5"x11"	1.1	MaxWhite FG

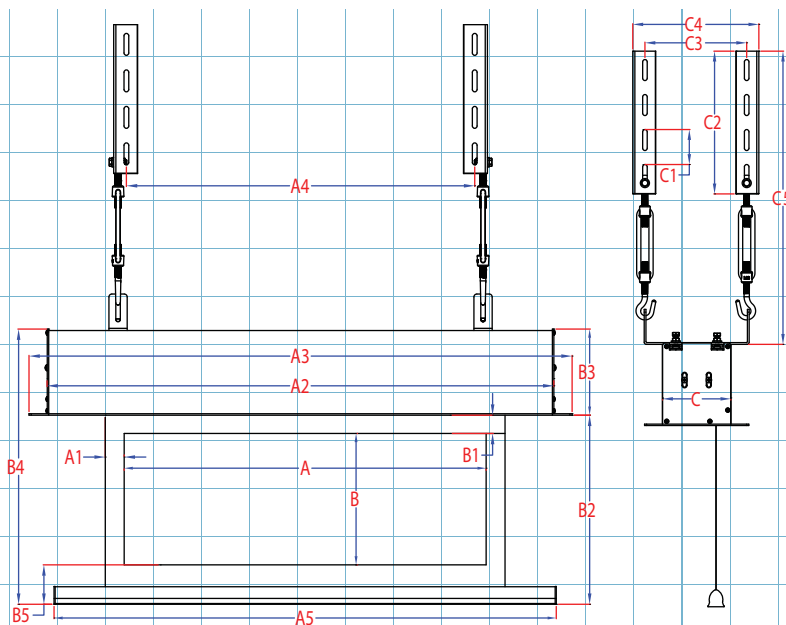
Evanesce Plus Series Dimensions Table

Model	Screen Diag. & Aspect Ratio	View Width (A)	L/R black masking borders (A1)	Case Length (A2)	Full Housing Length (A3)	A4	A5	View Height (B)	Top Black Border (B1)	B2	B3	B4	B5	C	C1	C2	C3	C4	C5	C6
IHOME150VW2-E12	150"(4:3)	3048	50	3247	3287	2847	3228	2286	305	2651	150	2801	60	135	50	925	175	210	1145-1205	175
IHOME180VW2-E12	180"(4:3)	3657	50	3857	3897	3457	3837	2743	305	3108	150	3258	60	135	50	925	175	210	1145-1205	175
IHOME200VW2-E8	200"(4:3)	4064	50	4263	4303	3863	4244	3048	203	3311	150	3461	60	135	50	925	175	210	1145-1205	175
IHOME150HW2-E12	150"(16:9)	3320	50	3520	3560	3120	3500	1868	305	2233	150	2383	60	135	50	925	175	210	1145-1205	175
IHOME180HW2-E12	180"(16:9)	3985	50	4184	4224	3784	4165	2241	305	2606	150	2756	60	135	50	925	175	210	1145-1205	175
IHOME200HW2-E6	200"(16:9)	4427	50	4627	4667	4227	4607	2491	152	2703	150	2853	60	135	50	925	175	210	1145-1205	175

Unit: mm

Model	Screen Diag. & Aspect Ratio	View Width (A)	L/R black masking borders (A1)	Case Length (A2)	Full Housing Length (A3)	A4	A5	View Height (B)	Top Black Border (B1)	B2	B3	B4	B5	C	C1	C2	C3	C4	C5	C6
IHOME150VW2-E12	150"(4:3)	120.0	2.0	127.8	129.4	112.1	127.1	90.0	12.0	104.4	5.9	110.3	2.4	5.3	2.0	36.4	6.9	8.3	45.1-47.4	6.9
IHOME180VW2-E12	180"(4:3)	144.0	2.0	151.9	153.4	136.1	151.1	108.0	12.0	122.4	5.9	128.3	2.4	5.3	2.0	36.4	6.9	8.3	45.1-47.4	6.9
IHOME200VW2-E8	200"(4:3)	160.0	2.0	167.8	169.4	152.1	167.1	120.0	8.0	130.4	5.9	136.3	2.4	5.3	2.0	36.4	6.9	8.3	45.1-47.4	6.9
IHOME150HW2-E12	150"(16:9)	130.7	2.0	138.6	140.2	122.8	137.8	73.5	12.0	87.9	5.9	93.8	2.4	5.3	2.0	36.4	6.9	8.3	45.1-47.4	6.9
IHOME180HW2-E12	180"(16:9)	156.9	2.0	164.7	166.3	149.0	164.0	88.2	12.0	102.6	5.9	108.5	2.4	5.3	2.0	36.4	6.9	8.3	45.1-47.4	6.9
IHOME200HW2-E6	200"(16:9)	174.3	2.0	182.2	183.7	166.4	181.4	98.1	6.0	106.4	5.9	112.3	2.4	5.3	2.0	36.4	6.9	8.3	45.1-47.4	6.9

Unit: inch



Note: Data Error $\pm 1"$. The listed measurements are for general reference only. Please contact Elite Screens to verify product design and dimensions before attempting to integrate its products with any structural or furniture modification. Although a manufacturer may offer product advice, it may be taken or disregarded at the integrator's discretion. Elite Screens will not be held responsible or be otherwise liable for faulty installations.