



SRX-PRO
INTEGRATED DVMS

Quick Installation Guide

SRX-Pro NVR series

U2 NVR

SAFETY

When installing your U2 NVR be sure to avoid:

- Excessive heat, such as direct sunlight or heating appliances
- Contaminants such as dust and smoke
- Strong magnetic fields
- Sources of powerful electromagnetic radiation such as radios or TV transmitters
- Moisture and humidity
- Areas with mechanical vibrations
- Fluorescent lamps or objects that reflect light
- Unstable light sources as this may cause flickering
- Temperatures below 10° C (50° F) or above 30° C (86° F).

POWER SUPPLY

U2 Power consumption requirements: 100~ 240VAC.

It is strongly recommended to use an Uninterrupted Power Supply (UPS) (min. 1000VA) otherwise, all warranties may be voided.

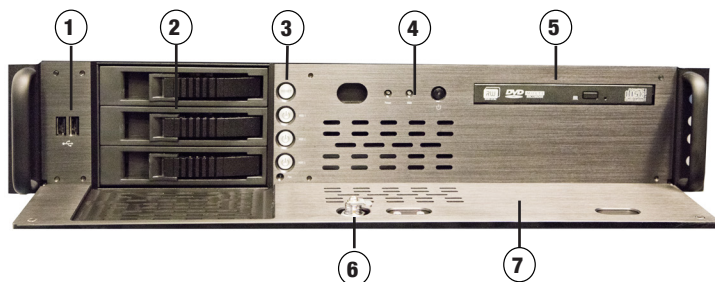
PACKAGE CONTENTS

Ensure that the items received match the following. In addition to this Quick Guide and the U2 NVR, the packing box includes:

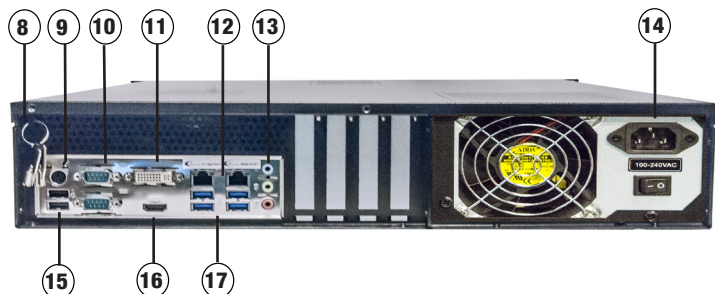
1. USB keyboard
2. USB mouse
3. Power cable
4. SRX-Pro Software and Utilities DVD
5. Security labels (x2)

DVR PARTS AND DEFINITIONS

Front Panel



Back Panel



No.	Item	Description
1	USB ports	USB 2.0 interfaces on front panel (x2)
2	Sata HDD drives	Sata HDD drives (x3)
3	HDD Power buttons	Hard drive power buttons to power down HDD for removal from Sata box. Reset button. Small Fan LED light at the bottom.
4	LED lights / Power button	LED light for machine "Power" on, "HDD" recording, and Power Button to start machine.
5	DVD drive	slim DVD drive
6	Lock	Locking mechanism
7	Panel cover	Front panel cover with lock
8	Keys	Keys for the lock on the front panel
9	PS2	PS2 port
10	Serial Com Port	Serial com port (x2)
11	DVI-I port	DVI-I monitor port
12	Network Port	RJ45 Network Port (x2) (connection to PoE Switch made on Left side Port. Wan connection made on Right port.)
13	Audio	Line in, Line out, Mic in
14	Power	AC Power in and main power switch
15	USB	USB 2.0 on back panel (x2)
16	HDMI	HDMI monitor port
17	USB	USB 3.0 port (x4)

INSTALLATION

Important: Please use the installation guides that came with your IP cameras to connect the cameras as needed to the PoE Gigabit switch.

The U2 is built in a 2U chassis for convenient Rackmount installation. Follow safety precautions when selecting an installation location for your U2 NVR.

1. Use supplied screws to secure the U2 if desired to an appropriate rackmount. Rackmount brackets are pre installed on the U2 Chassis.
2. Make sure the Power Switch is in the OFF position.
3. Ensure the power source is located within 1 meter (3 feet) from the UPS.
4. Ensure the system and its connecting cables have sufficient space and that the system is placed on an even surface (shelf or Rackmount).
5. Wait until the system is at room temperature before switching it on.
6. Plug the supplied USB mouse and the USB Keyboard into the USB ports on the back or front panel of the machine as desired.
7. Plug in the monitor. Depending on the monitor model, use either the HDMI (#16) or the DVI (#11) port on the back panel of the machine.
8. Connect your Audio IN and OUT (#13) devices, if using, to the corresponding audio connectors on the rear panel.
9. To connect the NVR to your IP camera network, plug the Network cable into the left Network Port (#12) on the rear panel of the NVR and then plug the other end into the PoE Gigabit switch.
10. Connect the provided power cable to the AC Power Supply connector (#14) and then plug it into the UPS unit.
11. Plug the UPS unit into the wall Power supply. Use of the UPS (Uninterrupted Power Supply) is highly recommended by i3 for added reliability and longevity of your NVR.
12. Flip Power Switch (#14) into the ON position. The DVR will power on and the front panel LEDs will light up.



INTELLIGENT VIDEO DRIVING PROFIT

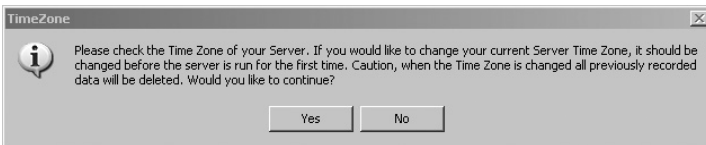
www.i3international.com
1.866.840.0004

CANADA 780 Birchmount Road,
Unit 16, Toronto,
ON, M1K 5H4

U.S.A 4450 Witmer Industrial Estates
Unit 4 Niagara Falls,
NY 14305

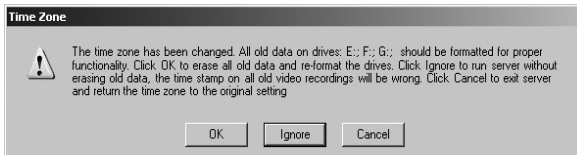
Time Zone Adjustment

All NVR units sold by i3 international are pre-set to Eastern Time zone (GMT -5:00). It is **imperative** that you configure the time zone setting on the first system start up. If the NVR is later relocated to a different time zone, this setting must be changed once again. All previously recorded data must be formatted after each time zone change. Failure to do so may result in system malfunction. Once the SRX-Pro Server starts for the first time, the message bellow will be displayed. Click **Yes** if the NVR is installed in the Eastern Time zone (GMT -5:00) click **No** if the NVR is installed in a different time zone - this will halt the SRX-Pro software startup and allow you an opportunity to set the time zone.



If the NVR is being installed in a different time zone, follow the instructions below:

1. On Windows Desktop, click on the System Time in the bottom right-hand corner.
2. In the calendar window, click **Change date and time settings**.
3. In Date and Time tab, click on **Change time zone** button and select the correct time zone in the drop down list. Click OK. Click OK again to close Date and Time window.
4. Launch SRX-Pro Server software by clicking on Start > All programs . SRX-Pro Server.
5. Once the software loads, the following message will be displayed on the screen.
6. Click **OK** (Highly recommended) to format all storage drives and erase video data recorded in a different time zone.



7. Click **OK** in the "All old data will be formatted" warning window.
8. Wait until the "Start allocating selected drive(s). It may take several minutes to finish." message changes to "Storage Drives have been allocated".
9. Click **OK** in the Allocation window to close it. The Login window will open on the screen. See Login Information below.

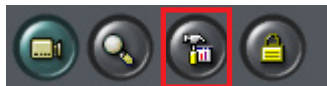
LOGIN INFORMATION

2 users will have been created with different levels of access to the machine.

Username/Password	Level of Access
i3admin / i3admin	Default administrative login providing full control of SRX-Pro software
user / user	View/ Search/ Playback/ Burn CD-DVD

NOTE: It is strongly recommended that after first logging into SRX-Pro the passwords should be changed (Note: do not change the default administrative login as this is used by Technical Support). Follow the instructions listed below.

1. Click the Setup button from the icon menu in the upper left corner of SRX-Pro.
2. Click the User Management Tab. This will display a list of the users in the left hand panel.
3. Click the User Name on the left to highlight it and then click the Edit button at the top of the window.
4. The User Information will be displayed in the Right hand pane. Enter a new Password and confirm the new password. Click "Apply" button at the bottom to save the changes.

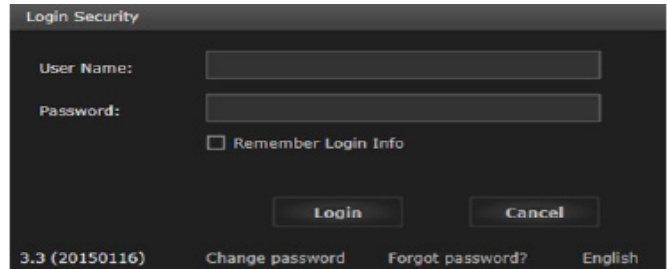


Main Screen Features

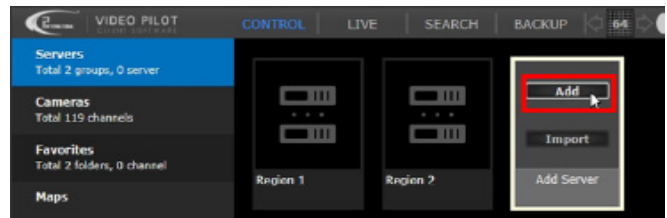
Once logged in you will see the SRX-Pro software main screen. Your connected cameras will be visible in the Live View Display window. If the cameras are not visible in the live view mode please contact Tech Support at: 1.877.877.7241 or by email at: support@i3international.com.

Video Pilot Client (VPC Remote Connection)

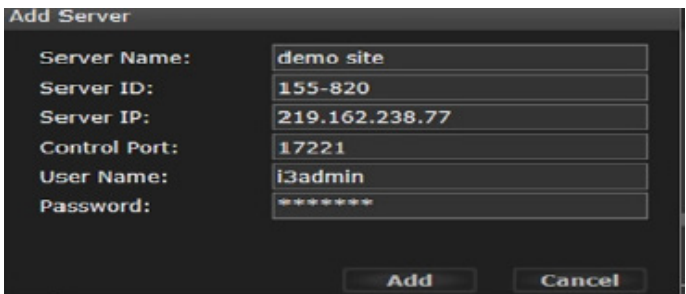
Video Pilot Client (VPC) is i3 International's remote software solution that allows for simple and efficient video surveillance from a remote location by connecting directly to your U2 NVR. Download VPC from our website: (i3international.com/index.php/software-downloads) and install it on your desktop. To launch VPC click the icon on the Desk Top. You will be asked to enter a User name and Password.



Once you are logged into VPC it will be necessary to add a new server. Mouse over "Add Server" and click "Add".



The server information for your U2 will need to be entered. If you do not have this information please contact Tech Support. For full operational instructions Please see the full VPC documentation available from our web site.



Cloud Managed Service (CMS)

Cloud Managed Services or CMS is the engine for business insights. If CMS is part of your U2 package please contact our CMS team cmssupport@i3international.com to complete the CMS set up.

Functionality and specifications are subject to change without prior notification.