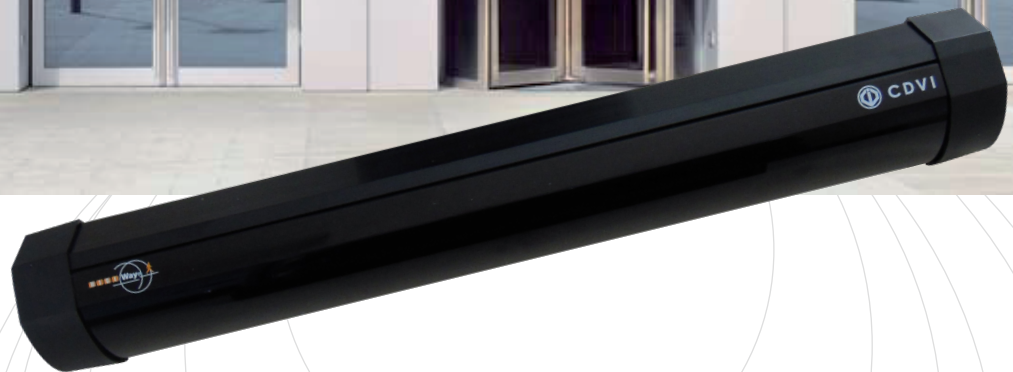




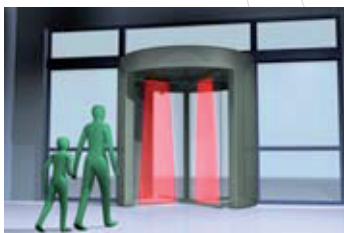
DWSSS-1

Safety



Definitive & Dependable Safety for Automatic Swing & Revolving Doors

Powerful and advanced optical technology ensures that an accurate detection field is maintained for unparalleled pedestrian safety



- **Increased Safety**
Ensure the optimum detection field is easily and accurately maintained through dip switch adjustment of detection distances
- **Swing & Revolving Door Compatible**
- **Simple to Install & Adjust**
Alter detection distances, relay logic and relay hold time through simple dip switch settings
- **Strong & Robust**
Strong, robust sensor not susceptible to vandalism or damage during installation

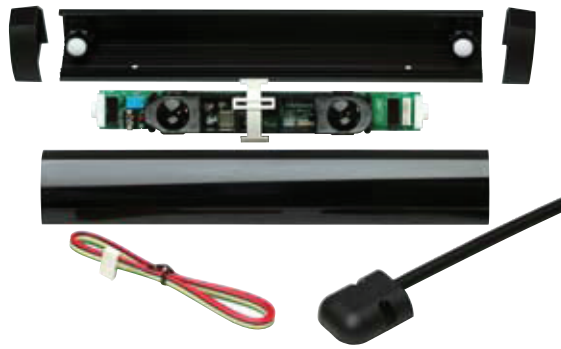


www.cdvi.ca



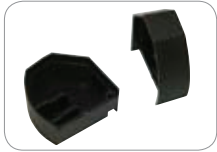
DWSSS-1

Safety



Technical Specification

Accessories



DWSSS-1 End Cap Kit
Pair of end caps for the DWSSS-1 sensor range



DWSSS-1 Filter cover
Available in 340mm, 700mm and 900mm lengths



DWSSS-1 PCB Unit Kit
PCB unit kit for the DWSSS-1 sensor range



DWSSS-1 Cabling Kit
Cabling kit for the DWSSS-1 sensor range



DWSSS-1-WC
Black weather cover
700mm in length

Model	DWSSS-1 Swing Door Safety
Detection Method	Infrared Presence Detection with P.S.D. distance measurement
Installation Height	2600mm (8.5ft) Max
Sensor Dimensions	DWSSS-1: 340mm (W), 47mm (H), 47mm (D) Weight 340g (0.75lbs)
Pattern Adjustment	Beam Angle Adjustment: 5,10,15,20,25 degrees Detection Distance Adjustment: 1.4, 1.6, 1.8, 2, 2.2, 2.4m
Detection Range	0 - 2.4m (0 - 7ft 10 inches)
Presence Timer	Infinity
IP Rating	54
Power Supply	12 to 24V AC or DC \pm 10%
Power Consumption	AC12V-1.1 [VA] (Max), DC12V-60 [mA] (Max) (All figures for 1 PCB unit) AC24V-1.6 [VA] (Max), DC24V-35 [mA] (Max) (All figures for 1 PCB unit)
Output Relay	Relay contact: DC50V 0.1A Non Voltage 1C
Response Speed	Less than 50 msec
Relay Hold Time	0.5, 1, 2, 4.5 sec
Inhibit Input	DC 12 to 24V \pm 10%; Inhibited when voltage is applied
DIP Switch Functions	Relay Hold Time: 2 bit Detection Range: 3 bit Optical Interference: 1 bit Relay Output Mode: 1 bit
Operating Temperature	-20°C to +60°C, (-4°F to 140°F)
Available Colours	Black: Product Code = DWSSS-1 (340mm with 1 PCB unit)

Detection Area Adjustments



Detection Area Angle Adjustment



Detection Area Distance Adjustment