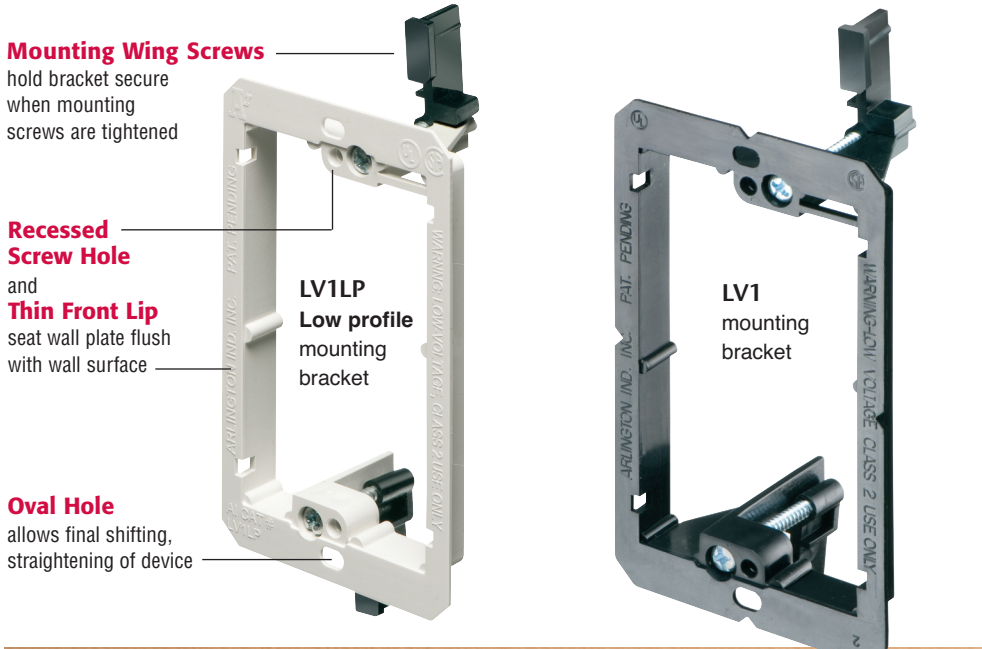


More
on
reverse

Low Voltage Mounting Brackets

For Low Voltage Class 2 wiring in **EXISTING CONSTRUCTION**



Arlington's non-metallic, **Low Voltage Mounting Brackets** are the time- and money-saving solution for faster and easier mounting of Class 2 communications, computer and cable TV wiring.

Designed to mount wall plates flush, our mounting brackets have features that deliver a better-looking, easy to install job – specially designed screw holes, thin front lip and more.

- Brackets adjust to fit various wall board from 1/4" to 1-1/2" thick
- Bracket is the template for cut out. Level. Trace inside of bracket. Cut opening.
- Horizontal or vertical mounting
- UL/CSA Listed

Faster installation – Lower cost than metal brackets



Patented



Arlington®

1 Stauffer Industrial Park
Scranton, PA 18517
800/233.4717 • Fax 570/562.0646
www.aifittings.com

Our Low Profile Mounting Brackets are designed for use with 1/2" or 5/8" drywall installed on furring strips attached to concrete walls.



Low Voltage Mounting Brackets for Existing Construction

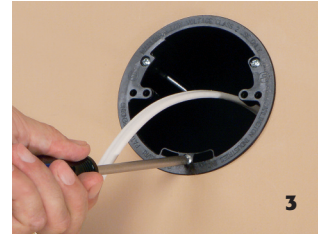
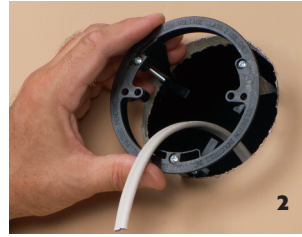
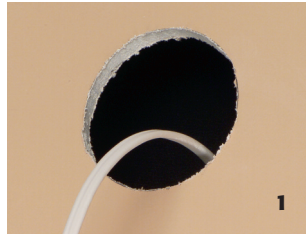
Try LVR1 for Easy Installation of Low Voltage Smoke Detectors and More!

Round LVR1

- Adjusts to fit 1/4" to 1-1/2" wall or ceiling thickness
- Bracket is its own template for cut out
- UL/CSA Listed

Fast, Easy Installation of a Low Voltage Smoke Detector

- 1 Trace bracket along *inside* diameter. Cut hole along *outside* of line. Pull wires.
- 2 Insert bracket into opening.
- 3 Tighten three screws to set LVR1 wings securely against drywall.
- 4 Attach low voltage smoke detector to LVR1 through screw holes in mounting plate.
- 5 Attach smoke detector cover.



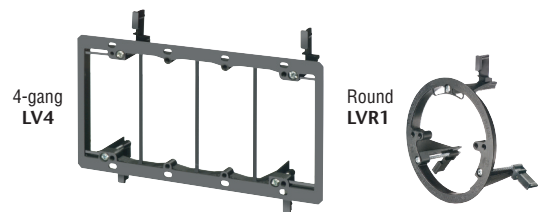
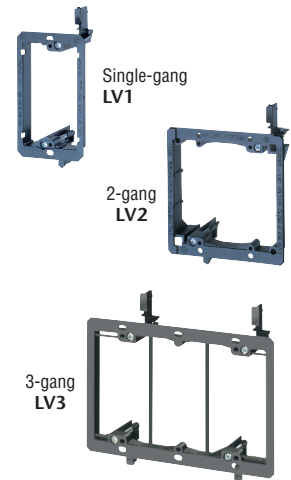
Mount Vertical on Wall...

or Horizontal on Ceiling

Try them all...

Non-metallic
Low Voltage
Mounting Brackets
Install Faster than
Metal – Cost less too!

Catalog Number	UPC/DEI/NAED Mfg. #018997	Description	Adjusts to Fit Wall Thickness	Unit Pkg	Std Pkg
LV1	58175	Single-gang	1/4" to 1"	10	100
LV2	10952	Two-gang	1/4" to 1"	5	50
LV3	09600	Three-gang	1/4" to 1"	5	50
LV4	09601	Four-gang	1/4" to 1"	5	50
LVR1	58185	Round	1/4" to 1-1/2"	—	25
LV1LP	58177	Low profile, single-gang	1/2" to 5/8"	10	100
LV2LP	23102	Low profile, two-gang	1/2" to 5/8"	5	50



Arlington®

1 Stauffer Industrial Park
 Scranton, PA 18517
 800/233.4717 • Fax 570/562.0646
 www.aifittings.com

Distributed by