



Specifications

- Overall jacket O.D.: 0.22 (Plenum); 0.24 (Riser)
- Conductor: 23 AWG solid bare copper
- Sweep tested to 750 MHz
- Maximum performance and guaranteed headroom above Category 6 parameters: 8 dB over TIA standards at 250 MHz (PS)NEXT, (PS)ACR, (PS)ELFEXT

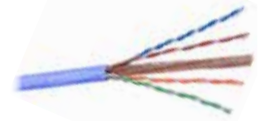
Standards

- ANSI/TIA 568.2-D and ISO/IEC 11801 Class E Category 6 cabling
- 10BASE-T through 1000BASE-T, 10GBASE-T per TSB-155
- IEEE 802.3af (PoE), IEEE 802.3at (PoE+), IEEE 802.3bt (4PPoE Type 3 and 4)
- UL Listed

NEXTSPEED® Category 6E Enhanced UTP Cable

NVP: Plenum 70%, Riser 68%

| Color | Plenum Spool | Riser Spool |
|--------|----------------|----------------|
| Black | C6ESPBK | C6ESRBK |
| Blue | C6ESPB | C6ESRB |
| Gray | C6ESPGY | C6ESRGY |
| Green | C6ESPGN | C6ESRGN |
| Orange | C6ESPOR | C6ESROR |
| Purple | C6ESPP | C6ESRP |
| White | C6ESPW | C6ESRW |
| Yellow | C6ESPY | C6ESRY |



Specifications

- Overall jacket O.D.: 0.20 (Plenum); 0.21 (Riser)
- Conductor: 23 AWG solid bare copper
- Sweep tested to 550 MHz
- Maximum performance and guaranteed headroom above Category 6 parameters: 8 dB over TIA standards at 250 MHz (PS)NEXT, (PS)ACR, (PS)ELFEXT

Standards

- ANSI/TIA 568.2-D and ISO/IEC 11801 Class E Category 6 Cabling
- 10BASE-T through 1000BASE-T, 10GBASE-T per TSB-155
- IEEE 802.3af (PoE), IEEE 802.3at (PoE+), IEEE 802.3bt (4PPoE Type 3 and 4)
- UL Listed



NEXTSPEED® Category 6 UTP Cable

NVP: Plenum 70%, Riser 68%

| Color | Plenum REELEX® Box | Riser REELEX® Box |
|--------|--------------------|-------------------|
| Black | C6RPBK | C6RRBK |
| Blue | C6RPB | C6RRB |
| Gray | C6RPGY | C6RRGY |
| Green | C6RPGN | C6RRGN |
| Orange | C6RPOR | C6RROR |
| Pink | C6RPPK | C6RRPK |
| Purple | C6RPP | C6RRP |
| Red | C6RPR | C6RRR |
| White | C6RPW | C6RRW |
| Yellow | C6RPY | C6RRY |

