

4MP WDR Ultra IR Turret Camera



MPIX-40IRBFT

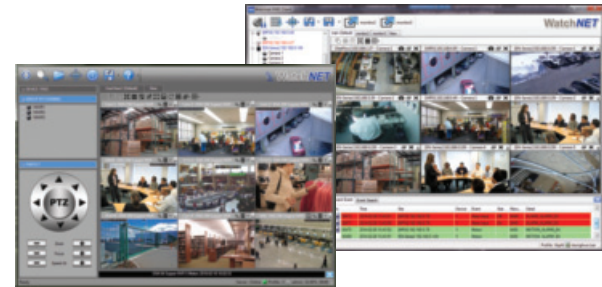


4MP WDR Ultra IR Turret Camera



Features:

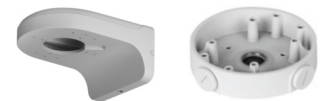
- ❖ 1/3" 4MP progressive scan CMOS
- ❖ Max 20fps@4MP (2688×1520)/25/30fps@3MP (2304×1296)
- ❖ Max. IR LEDs Length 50m/164feet
- ❖ WDR(120dB), Day/Night(ICR), 3DNR, AWB, AGC, BLC
- ❖ Smart Detection supported
- ❖ 2.8mm fixed lens (3.6mm & 6mm-special order)
- ❖ Built-in Microphone
- ❖ IP67, PoE
- ❖ Multiple network monitoring:
Built-in web server & Multifunction VMS
- ❖ Operating Temperature: -35°C ~ +60°C / -31°F ~ +140°F
- ❖ Supports iPhone, Android



FREE Multisite VMS Software included

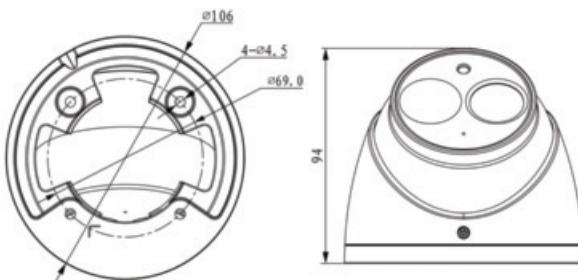


Optional Brackets:



BRACK-WM-49

BRACK-BB-43



iPhone



Model	MPIX-40IRBFT
Camera	
Image Sensor	1/3" 4.0MP progressive scan CMOS
Effective Pixels	2688(H) x 1520(V)
Mini. Illumination	0.01Lux/F2.0 (Color), 0Lux/F2.0(IR on)
Electronic Shutter Speed	Auto/Manual, 1/3(4)~1/100000s
S/N Ratio	More than 50dB
Scanning System	Progressive
Video Output	N/A
Lens	
Max Aperture	F2.0
Focal Length	2.8mm fixed lens (3.6mm & 6mm-special order)
Focus Control	Manual
Lens Type	Fixed lens
Mount Type	Board-in Type
Angle of View	H:110°
Features	
Day/Night	Auto(ICR) / Color/B/W
Backlight Compensation	BLC / HLC / WDR (120dB)
Max. IR LEDs Length	50m/164feet
Gain Control	Auto / Manual
White Balance	Auto / Sunny / Night / Outdoor / Customized
Noise Reduction	3D
Privacy Masking	Up to 4 areas
Video	
Image Resolution	4MP(2688×1520) / 4MP(2560×1440) / 1080p(1920×1080) / 720p(1280×720) / D1(704×576/704×480) / CIF(352×288/352×240)
Frame Rate	Main Stream: 4MP (1~20fps) / 3MP (1~25/30fps) / Sub Stream: D1/CIF(1~20fps) / Third Stream: 720p(1~20fps)
Bit Rate	H.264: 32Kbps~10Mbps
Corridor Mode	Support
Network	
Ethernet	RJ-45 (10/100Base-T)
Protocol	IPv4/IPv6, HTTP, HTTPS, SSL, TCP/IP, UDP, UPnP, ICMP, IGMP, SNMP, RTSP, RTP, SMTP, NTP, DHCP, DNS, PPPOE, DDNS, FTP, IP Filter, QoS, Bonjour, 802.1x
Max. User Access	20 users
Smart Phone	iPhone, iPad, Android
ONVIF	ONVIF profile S, PSIA, CGI
Smart Function	
Smart detection	Supported
Audio	
Compression	G.711a / G.711u / AAC
Interface	Built-in Microphone
Environmental	
Power Supply	DC12V, PoE (802.3af)
Power Consumption	Max 3.7W
OperatingTemp./Hum.	-35°C ~ +60°C / -31°F ~ +140°F, Less than 95%RH
Protection Level	IP67, POE
Dimension	Φ106mm × 94mm / 4.17" × 3.70"
Weight	0.47kg / 1.04lb

All logos & trade marks represent the registered users only. All rights reserved.
All product specifications on this brochure are subject to change without notice.

CANADA:
351 Ferrier Street, Unit 5
Markham, ON L3R 5Z2
Toll Free: 1-866-843-6865
Tel: 416-410-6865
Fax: 1-866-331-3341

USA:
171 Cooper Ave. Suite 110
Tonawanda, NY 14150 USA
Toll Free: 1-855-404-3193
Local: 1-716-877-7277
Fax: 1-866-331-3341

info@watchnetinc.com
www.watchnetinc.com

INDIA:
RZ- 2, Ground Floor
Kapashera
Opp Kapashera Police Station
New Delhi-110037
Tel/Fax: +91 11 26816005

UAE:
PO Box 126312
No 703, Oxford Towers
Business Bay
Dubai, UAE
Tel: +971 4 2767117