

Faster.
Easier.
Better.



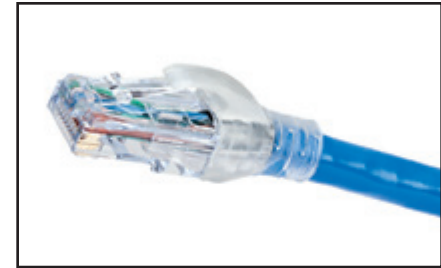
10GX Modular Cords

Bonded-Pair Cords and Nonbonded-Pair Pigtails

The 10GX Modular Cords are 4-pair 24 AWG UTP modular cords designed to be used within the Belden IBDN 10GX System. Belden has designed the 10GX Modular Cord based on a patent-pending plug management bar design which allows for very good control of the internal plug NEXT. The Bonded-Pair patch cable design offers very good Alien crosstalk performance, while maintaining the important mechanical characteristics such as flexibility. The 10GX Modular Cords' design, with a very small footprint, makes them fully compatible with the highest density hubs that utilize RJ45 jack connections.

The 10GX Modular Cords are available in dark colors which match the horizontal cable colors and are also available in TIA/EIA-606 standard (pastel) colors. The unmatched performance exceeds all parameters specified in the Category 6A standard. All performance characteristics have been set to guarantee transmission performance up to 625 MHz.

- Exceeds TIA and ISO transmission and mechanical performance requirements
- Ordering code scheme to customize Bonded-Pair Patch Cord and Pigtail configurations



10GX Modular Cord

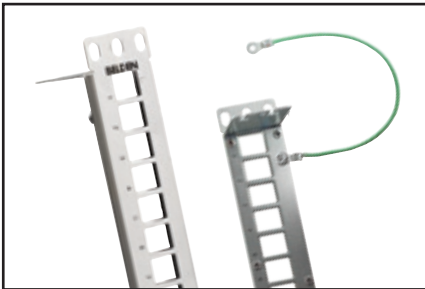
10GX Modular Cords

Description	Belden Part Number					
	Yellow	Green	Blue	Gray	White	Black
10GX Patch Cord, Bonded-Pair, 4-pair, 24 AWG Solid, T568A/B-T568A/B, CMR						
2 ft (0.6 m)	CA21104002	CA21105002	CA21106002	CA21108002	CA21109002	CA21100002
4 ft (1.2 m)	CA21104004	CA21105004	CA21106004	CA21108004	CA21109004	CA21100004
7 ft (2.1 m)	CA21104007	CA21105007	CA21106007	CA21108007	CA21109007	CA21100007
10 ft (3.0 m)	CA21104010	CA21105010	CA21106010	CA21108010	CA21109010	CA21100010
15 ft (4.6 m)	CA21104015	CA21105015	CA21106015	CA21108015	CA21109015	CA21100015
25 ft (7.6 m)	CA21104025	CA21105025	CA21106025	CA21108025	CA21109025	CA21100025
xxx	CA21104xxx	CA21105xxx	CA21106xxx	CA21108xxx	CA21109xxx	CA21100xxx
10GX Patch Cord, Bonded-Pair, 4-pair, 24 AWG Solid, T568A/B-T568A/B, CMR, TIA Colors						
2 ft (0.6 m)	CA21114002	CA21115002	CA21116002	-	-	-
4 ft (1.2 m)	CA21114004	CA21115004	CA21116004	-	-	-
7 ft (2.1 m)	CA21114007	CA21115007	CA21116007	-	-	-
10 ft (3.0 m)	CA21114010	CA21115010	CA21116010	-	-	-
15 ft (4.6 m)	CA21114015	CA21115015	CA21116015	-	-	-
25 ft (7.6 m)	CA21114025	CA21115025	CA21116025	-	-	-
xxx	CA21114xxx	CA21115xxx	CA21116xxx	-	-	-
10GX Pigtail, Nonbonded-Pair, 4-pair, 23 AWG Solid, T568A-Open, CMR						
15 ft (4.6 m)	-	-	CA31206015	CA31208015	CA31209015	-
25 ft (7.6 m)	-	-	CA31206025	CA31208025	CA31209025	-
35 ft (10.6 m)	-	-	CA31206035	CA31208035	CA31209035	-
50 ft (15.2 m)	-	-	CA31206050	CA31208050	CA31209050	-
xxx	-	-	CA31206xxx	CA31208xxx	CA31209xxx	-
10GX Pigtail, Nonbonded-Pair, 4-pair, 23 AWG Solid, T568B-Open, CMR						
15 ft (4.6 m)	-	-	CA31306015	CA31308015	CA31309015	-
25 ft (7.6 m)	-	-	CA31306025	CA31308025	CA31309025	-
35 ft (10.6 m)	-	-	CA31306035	CA31308035	CA31309035	-
50 ft (15.2 m)	-	-	CA31306050	CA31308050	CA31309050	-
xxx	-	-	CA31306xxx	CA31308xxx	CA31309xxx	-
10GX Pigtail, Nonbonded-Pair, 4-pair, 23 AWG Solid, T568A-Open, CMP						
15 ft (4.6 m)	-	-	CA32206015	CA32208015	CA32209015	-
25 ft (7.6 m)	-	-	CA32206025	CA32208025	CA32209025	-
35 ft (10.6 m)	-	-	CA32206035	CA32208035	CA32209035	-
50 ft (15.2 m)	-	-	CA32206050	CA32208050	CA32209050	-
xxx	-	-	CA32206xxx	CA32208xxx	CA32209xxx	-
10GX Pigtail, Nonbonded-Pair, 4-pair, 23 AWG Solid, T568B-Open, CMP						
15 ft (4.6 m)	-	-	CA32306015	CA32308015	CA32309015	-
25 ft (7.6 m)	-	-	CA32306025	CA32308025	CA32309025	-
35 ft (10.6 m)	-	-	CA32306035	CA32308035	CA32309035	-
50 ft (15.2 m)	-	-	CA32306050	CA32308050	CA32309050	-
xxx	-	-	CA32306xxx	CA32308xxx	CA32309xxx	-

xxx = available 1 ft to 150 ft in increments of 1 ft, 20 ft and 25 ft
All pigtails also available in Bonded-Pair

10GX Shielded System (continued)

KeyConnect Patch Panels, Modular Jacks and Cords



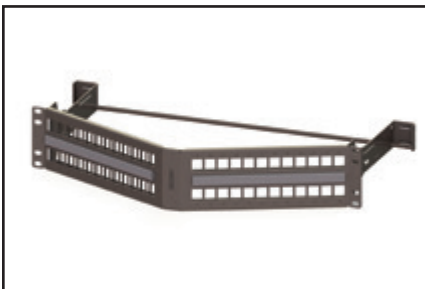
10GX Shielded Modular Patch Panel (Empty)

KeyConnect Shielded Patch Panels are robust all-metal modular patch panels that provide a flexible, versatile and high-density termination solution for Data Center and Telecommunications Room installations. They come with a ground wire to guarantee shielding integrity (per TIA-607-B) and cable management brackets for neat cable dressing. The KeyConnect Shielded Patch Panels can be configured using 10GX Shielded Modular Jacks or any other KeyConnect modules.

The 10GX Shielded KeyConnect Jack is a rugged tool-less connector designed to be used

within the Belden IBDN 10GX Shielded System. Its 2-piece die-cast housing and its shielding lug provide a reliable shield and 360 degree durable bonding to the cable foil.

10GX Modular Cord are designed around a patent pending plug management bar design which allows for very good control of the internal plug NEXT. The cord design offers excellent alien crosstalk performance, while maintaining flexibility. The system's unmatched performance exceeds all parameters specified in the Category 6A standard with guaranteed transmission performance up to 625 MHz.



KeyConnect Shielded Patch Panel Angled 48-p, 2U

KeyConnect Shielded Modular Patch Panels

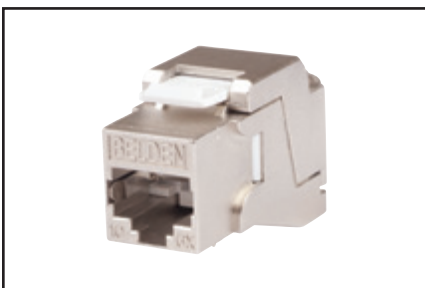
Description	Belden Part Number
KeyConnect Shielded Patch Panel, 24-port, 1U, Titanium (Empty)	AX104563
KeyConnect Shielded Patch Panel, 48-port, 2U, Titanium (Empty)	AX104564
KeyConnect Shielded Angled Patch Panel, 24 port, 1U, Titanium (Empty)	AX104622
KeyConnect Shielded Angled Patch Panel, 48 port, 2U, Titanium (Empty)	AX104623

10GX Shielded Modular Jacks

Description	Belden Part Number
10GX Shielded KeyConnect Modular Jack, Metallic	AX104562

Color-coded Icon Kit

Description	Belden Part Number							
	Red	Orange	Yellow	Green	Blue	Purple	White	Black
KeyConnect Color-coded Icon Kit for Shielded Jacks and Couplers	AX104632-RD	AX104632-OR	AX104632-YE	AX104632-GN	AX104632-BL	AX104632-PR	AX104632-EW	AX104632-BK



10GX Shielded KeyConnect Modular Jack

10GX Shielded Modular Cords

Description	Belden Part Number			
	Black	Blue	Gray	White
10GX Shielded Patch Cords, Bonded-Pair, 4-pair, 24 AWG Solid, T568A/B–T568A/B, CMR				
2 ft (0.6 m)	CAF1100002	CAF1106002	CAF1108002	CAF1109002
4 ft (1.2 m)	CAF1100004	CAF1106004	CAF1108004	CAF1109004
7 ft (2.1 m)	CAF1100007	CAF1106007	CAF1108007	CAF1109007
10 ft (3.0 m)	CAF1100010	CAF1106010	CAF1108010	CAF1109010
15 ft (4.6 m)	CAF1100015	CAF1106015	CAF1108015	CAF1109015
25 ft (7.6 m)	CAF1100025	CAF1106025	CAF1108025	CAF1109025
xxx	CAF1100xxx	CAF1106xxx	CAF1108xxx	CAF1109xxx

xxx = available 1 ft to 15 ft in increments of 1 ft, 20 ft and 25 ft

10GX Shielded Pigtails, Bonded-Pair, 4-pair, 24 AWG Solid, T568A–Open, CMR				
15 ft (4.6 m)	CAF1200015	CAF1206015	CAF1208015	CAF1209015
25 ft (7.6 m)	CAF1200025	CAF1206025	CAF1208025	CAF1209025
xxx	CAF1200xxx	CAF1206xxx	CAF1208xxx	CAF1209xxx
10GX Shielded Pigtails, Bonded-Pair, 4-pair, 24 AWG Solid, T568B–Open, CMR				
15 ft (4.6 m)	CAF1300015	CAF1306015	CAF1308015	CAF1309015
25 ft (7.6 m)	CAF1300025	CAF1306025	CAF1308025	CAF1309025
xxx	CAF1300xxx	CAF1306xxx	CAF1308xxx	CAF1309xxx
10GX Shielded Pigtails, Bonded-Pair, 4-pair, 24 AWG Solid, T568A–Open, CMP				
15 ft (4.6 m)	CAF2200015	CAF2206015	CAF2208015	CAF2209015
25 ft (7.6 m)	CAF2200025	CAF2206025	CAF2208025	CAF2209025
xxx	CAF2200xxx	CAF2206xxx	CAF2208xxx	CAF2209xxx
10GX Shielded Pigtails, Bonded-Pair, 4-pair, 24 AWG Solid, T568B–Open, CMP				
15 ft (4.6 m)	CAF2300015	CAF2306015	CAF2308015	CAF2309015
25 ft (7.6 m)	CAF2300025	CAF2306025	CAF2308025	CAF2309025
xxx	CAF2300xxx	CAF2306xxx	CAF2308xxx	CAF2309xxx

xxx = available 6 ft to 50 ft in increments of 1 ft, 55 ft to 295 ft in increments of 5 ft



10GX Shielded Modular Cord

Please see page 19 for 10GX Shielded Patch Cord part numbers