

Features

- Two station ports provide connections for up to 64 NC300II stations.
- Two master station ports provide connections for up to 10 touchscreen master stations.
- Enables legacy stations to function on the Tek-CARE Network.
- Network up to 20 modules together on the Tek-CARE System.
- Stackable shelf mount; 2U rack mount kit included.
- Programmable using our exclusive Config Tool software via laptop connected to the Tek-CARE Network.
- UL/cUL®1069 and UL®2560 Listed.
- RoHS Compliant.

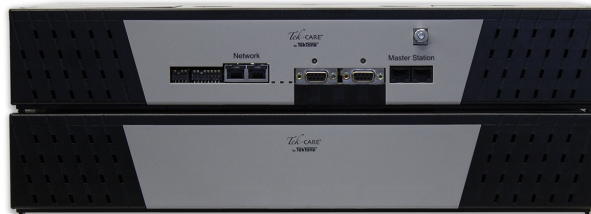
Description

The NC356CE is a third-generation module designed as part of the Tek-CARE platform. This module is capable of connecting to legacy NC300II patient stations, duty stations, staff stations, etc. and seamlessly integrating them to more modern hardware on the Tek-CARE Network.

The NC356CE is stackable and rack mountable. The NC356CE includes on-board backup batteries to transition the nurse call system over to generator backup power.

The NC356CE allows facilities to retain their original field stations and familiar operation while opening the door to advanced features like event logging and reporting, modern touchscreen master stations, the Tek-CARE Staff App, and much more. It is a cost-effective solution for facilities that desire more advanced features from their legacy nurse call system, but do not wish to install a completely new system.

Refer to the Tek-CARE® [Power Calculator](#) on TekTone's website for more information on power restrictions.



NC356CE Central Equipment Module
PK356 Power Supply also shown (included).

Specifications

Dimensions:	3.25"H × 17.00"W × 10.05"D (83 mm × 432 mm × 255 mm)
Construction:	PC board with quality electronic components
Input Power:	90VAC–264VAC at 50Hz–60Hz
Typical current usage:	1.6A at 115VAC or 0.9A at 230VAC
Temperature:	0°–70°C
Humidity:	5–95% (non-condensing)
Built-in Surge Protection:	783V clamping

Listings



Listed by Underwriters Laboratories, Inc. to the UL®1069 seventh edition standard for Hospital Signaling and Nurse Call Equipment, the UL®2560 standard for Emergency Call Systems, and cUL® Listed to CSA C22.2 No. 205. UL® File Number E71599.



RoHS Compliant.

Required Components

Tek-CARE300II Patient Stations

Optional Components

NC475 Tek-CARE Appliance Server
NC415AV/NC404TS Master Stations