



**IP1500**  
Single button  
surface mounted



**IP1501**  
Single button  
flush mounted  
with mounting box

### IP1500 SPEAKERPHONE

The evolution of Code Blue Corporation continues with the introduction the **IP1500**, a full duplex VoIP speakerphone. Ideal for both indoor and outdoor locations, these phones will allow customers to have all of their communication needs on a single platform when implemented with our signature Help Points®. Code Blue has a full range of emergency phone sizes that are suitable for nearly any application.

The Code Blue **IP1500** Series is an easily identifiable, vandal resistant communications device that is Americans with Disabilities Act (ADA) compliant. The quality **IP1500** is hands-free, with an optional remote-mounted blue strobe/beacon that serves to identify the unit from a great distance.

It would be hard to find another phone that combines such a unique mix of features - full duplex VoIP, SIP standards, auxiliary output and outdoor rating - in one package.

#### STANDARD FEATURES

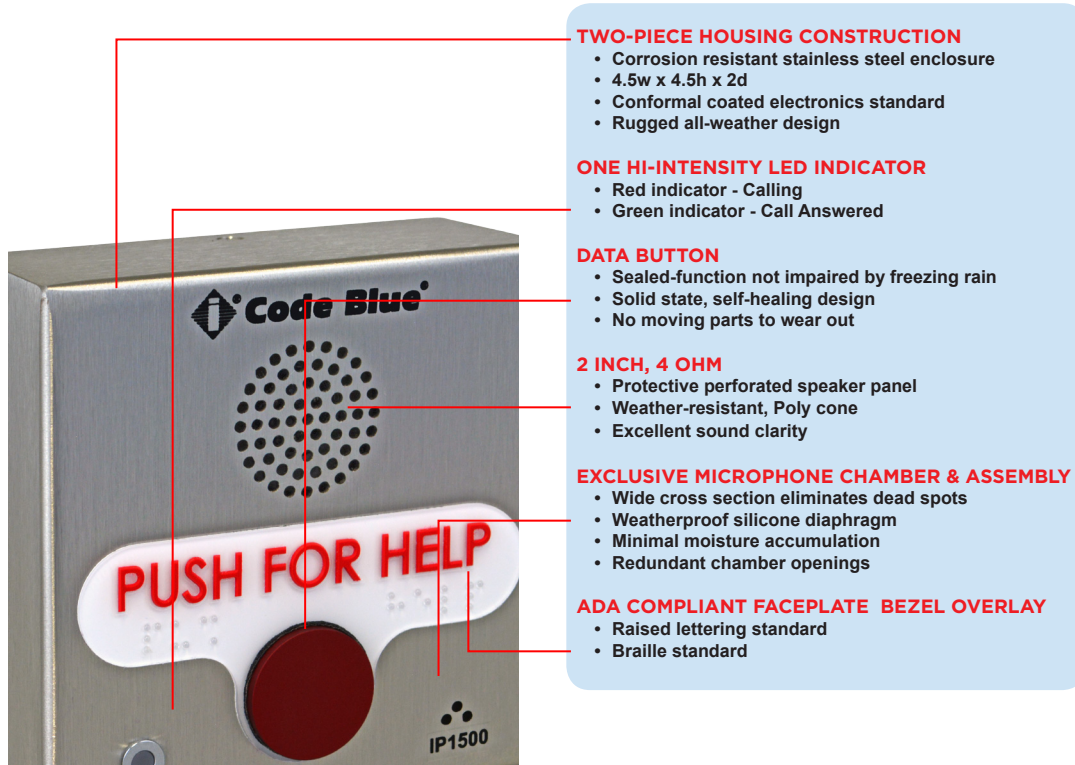
- ▶ Full duplex speakerphone, intercom and paging device
- ▶ 1MB memory storage for phone numbers and audio messages
- ▶ Phone numbers up to 255 digits long
- ▶ SIP/IAX2 Protocol support
- ▶ STUN client for NAT transversal
- ▶ UDP, TCP and TLS
- ▶ 1 x IEEE 802.3u 10/100 Ethernet port
- ▶ Embedded web server
- ▶ Security includes:
  - HTTPS
  - Transport Layer Security (TLS)
  - SRTP (RFC3711), SIPS
  - RTCP
  - VLAN
  - Password protection
- ▶ DTMF inband/out of band/INFO
- ▶ 1 piezoelectric data button input
- ▶ 1 auxiliary N.O. output contact closures with programmable timing capability
- ▶ Self-monitoring and fault reporting:
  - Communication service
  - Button failure
  - Speaker failure
  - Microphone failure
- ▶ UL 2017 certified

#### OPTIONAL FEATURES

- ▶ Surface mount available painted
- ▶ Optional bezel – Push for Help, Emergency or Emergencia
- ▶ Remote mount beacon/strobe



### DESIGN FEATURES

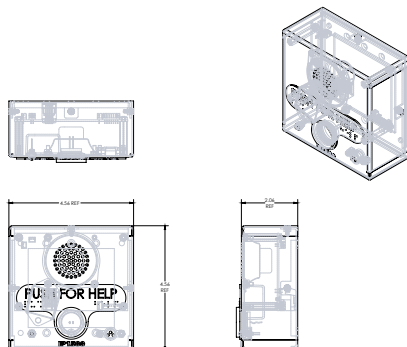


Specifications subject to change without notice or obligation on the part of the manufacturer.

### CONSTRUCTION **NOTE: A standard #4 1/4" Spanner Drive insert bit is needed to access unit.**

- Model 1500 series - 16 gauge stainless steel housing and backplate.
- Model 1501 series - 16 gauge stainless steel faceplate assembly. Flush mounting box is 14 gauge painted steel.
- Electronic boards are conformal coated for outdoor operation.

#### SURFACE MOUNT



#### FLUSH MOUNT

