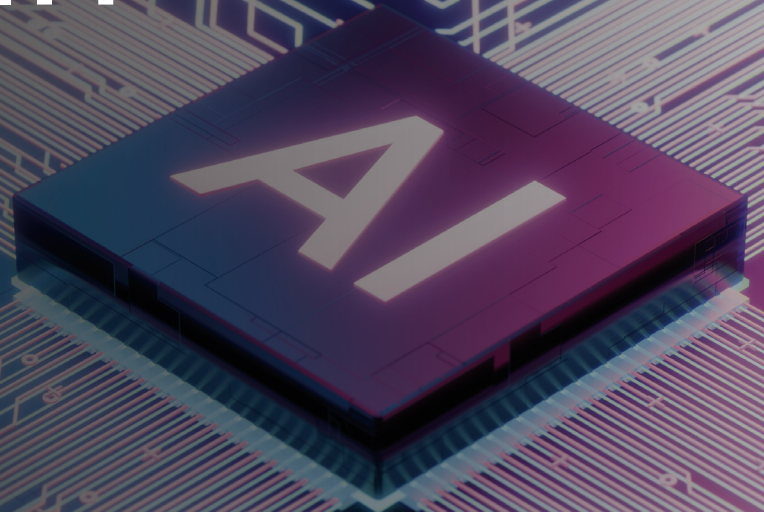


# BETTER SAFETY, BETTER SECURITY WITH NEXT LEVEL AI

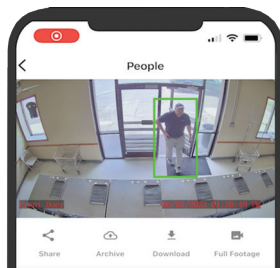
Turing AI's People Analytics provides better safety and security through utilizing Face Search\*, Person Attribute Search\*, Person History\*, and Person of Interest\* Alerts & Notifications.



## Three Levels of AI

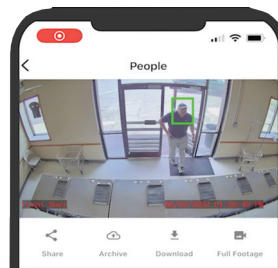
### LEVEL ONE: OBJECT DETECTION

Person



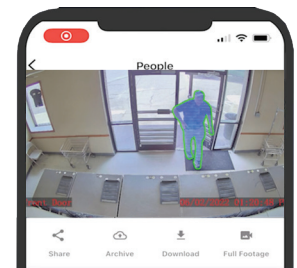
### LEVEL TWO: IDENTITY DETECTION

Tim S.



### LEVEL THREE: ATTRIBUTE DETECTION

Hat /  
Black Shirt /  
Grey Pants



## TURING

Turing AI is committed to ensure its platform comply with applicable regulations. Activation depends on state regulations and the compliance with Biometric Information Protection Act (BIPA). Please refer to our [privacy policy](#), and [compliance availability](#).

\*Activation depends on state regulations and the compliance with Biometric Information Protection Act (BIPA). Please refer to our [privacy policy](#).

Visit our website to learn more at [turing.ai](https://turing.ai)

# Simplify Your Security Workflow with Award-Winning AI

The image displays four panels illustrating the Turing AI security workflow:

- Identity Search uses Name, ID and Face:** A screenshot of the search interface with a search bar and a photo of a man.
- Find People that Match Selected Attributes:** A screenshot showing a grid of search results for people matching specific attributes.
- View all people that have been captured to speed up investigations:** A screenshot showing a grid of all captured images of a specific person.
- Intelligent alert based on person and vehicle of interest:** A screenshot of an alert notification for a person and vehicle.

## Privacy

Turing AI's People Analytics solution is built with optimal safety and security. Any historical data your system collects is encrypted and securely stored within your organization.

Turing AI provides customers complete control over their Turing Vision Platform. Face Search\* and People Attribute Search\* takes administrative approval to be activated. Face Search\* is not available and may not be used in the States of Illinois, Texas, or Washington. By enabling Face Search\*, I agree not to use Face Search\* in Illinois, Texas or Washington. If I do use Face Search\* in Illinois, Texas or Washington, I agree to indemnify and hold harmless Turing for any claims or liability arising from or related to my use of Face Search\* in Illinois, Texas, or Washington. I further acknowledge that the data generated by Face Search\* may be subject to certain Data Protection Laws and Biometric Privacy Laws and agree that I will comply with all applicable Data Protection Laws and Biometric Privacy Laws relating to the deployment and use of Face Search\*.

Data Protection Laws include, without limitation, (i) the California Consumer Privacy Act of 2018 (CCPA), as amended and replaced by the California Privacy Rights Act of 2020, (ii) the Virginia Consumer Data Protection Act (VCDPA), (iii) the Colorado Privacy Act (CPA), (iv) the Connecticut Data Privacy Act (CTDPA), (v) the Utah Consumer Privacy Act (UCPA), (vi) the Canada Personal Information and Electronic Documents Act (PIPEDA), (vii) the Alberta Personal Information Protection Act (Alberta PIPA), (viii) the British Columbia Personal Information Protection Act (BC PIPA), (ix) the Quebec Act Respecting the Protection of Personal Information in the Private Sector, (x) the Quebec Information Technology Act and (xi) such other comprehensive data protection laws that may be enacted and during my use of the services and would apply to my use of the services. Biometric Privacy Laws include, without limitation, (i) the Illinois Biometric Information Privacy Act (BIPA), (ii) Washington statute RCW 19.375, (iii) the Texas Capture or Use of Biometric Identifiers (CUBI), (iv) New York City Admin. Code § 22-1201 and (v) such other biometric privacy laws that may be enacted during my use of the services and would apply to my use of the services.

## Compliance and Availability

Turing AI is committed to ensure its platform comply with applicable regulations. The following features are not available in the jurisdiction listed in the table below.

Jurisdiction	Face Search	Person of Interest Notifications
Illinois	X	X
Texas	X	X
Washington	X	X
Baltimore	X	X
Portland	X	X

## TURING

Turing AI is committed to ensure its platform comply with applicable regulations. Activation depends on state regulations and the compliance with Biometric Information Protection Act (BIPA). Please refer to our [privacy policy](#), and [compliance availability](#).

\*Activation depends on state regulations and the compliance with Biometric Information Protection Act (BIPA). Please refer to our [privacy policy](#).

Visit our website to learn more at [turing.ai](https://turing.ai)