

# Belden IBDN<sup>®</sup>

Pre-Terminated  
Copper Solutions



**Be certain.  
Belden.**

Our End-to-End Expertise.  
Your End-to-End Solution.



**BELDEN**  
SENDING ALL THE RIGHT SIGNALS



**Be certain.  
Belden.**



# TABLE OF CONTENTS

<b>04</b>	<b>BELDEN IBDN® Pre-Term Solutions</b>	
	10GX Pre-Terminated Cabling Systems	4
	Belden 10GX Pre-Term Patching Cabling System	5
<b>07</b>	<b>BELDEN REVConnect® Pre-Term System</b>	
	10GX REVConnect Jacks Pre-Terminated Cabling System	7-8
	Belden Part Numbers	9
<b>10</b>	<b>BELDEN KeyConnect® Pre-Term System</b>	
	10GX KeyConnect Jacks Pre-Terminated Cabling System	10
	Belden Part Numbers	11



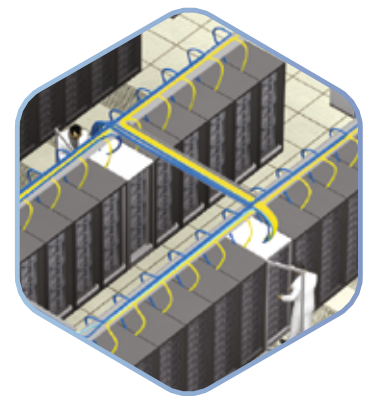
# 10GX Pre-Terminated Cabling Systems

## Pre-Term Made Easy

- Easy to configure: only a few standard components to choose from to build an entire system
- Easy to order: simplified ordering process eliminates errors
- Easy to install: small and flexible cable assemblies combined with

## Reliability and Performance - No Compromise

- Built-in reliability with ultra-robust assemblies and connectors
- Guaranteed Category 6A performance with test results supplied with each assembly
- Guaranteed headroom up to 625 MHz
- Guaranteed headroom in channels as short as 5 ft (1.6 m)
- Fully supported under Belden's IBDN 10GX Certification Program



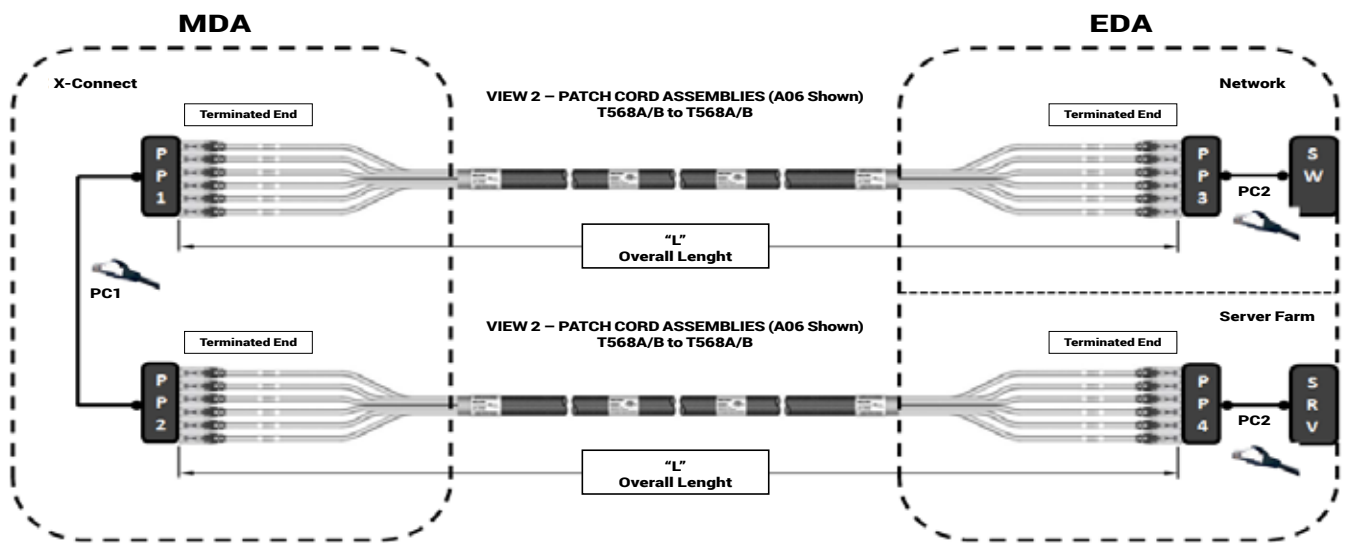
## Save Time and Money

- Reduced planning time with simplified selection of modular components
- Fast delivery to meet short project turn-around deadlines
- Up to 90% reduction in installation time and labor costs
- Virtually no testing or troubleshooting required

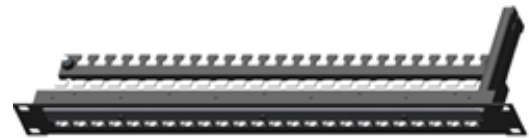
## Make it "Green"

- Simplicity of the components means energy and waste savings throughout the manufacturing and supply chain process
- Small and flexible cable assembly design mean less cable to be deployed and no unnecessary slack
- Plug-and-play REVConnect connectivity components significantly reduce installation time and labor costs with almost no product waste during installation and operation
- Up to 50% material reduction in Data Center & LAN cabling topology
- All system components can be easily re-deployed and reused

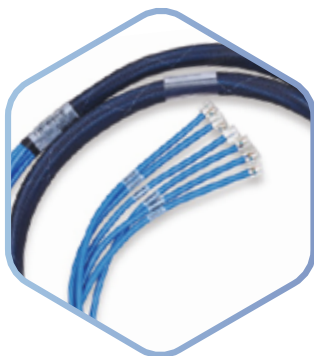
# Belden 10GX Pre-Term Patching Cabling System



10GX Pre-Term REVConnect System



10GX Pre-Term Coupler System





**BELDEN**  
SENDING ALL THE RIGHT SIGNALS







## 10GX REVConnect® Jacks Pre-Terminated Cabling System

REVConnect Pre-Term Assemblies provide a rapid deployment infrastructure solution for today's data centers and enterprise LANs, with a compact copper pre-term bundle OD.

They save time on the long process of field termination and offer a more cost-effective, proven-quality and flexible plug-and-play solution.

REVConnect Pre-Terminated Assemblies, using our unique cables, are terminated with our award-winning REVConnect termination.

Universal Core can be terminated with Jack or RJ45 Plug, providing a versatile solution to End Users.

Compact Pulling Eye OD, makes pulling the cable easier for contractors during installation.

Enable faster and more efficient deployment when paired with our REVConnect Preloaded Patch Panels. Providing a true Plug & Play and MAC-Friendly solution. (MAC = Moves added and Changes)

Future-proofing your network for high-bandwidth applications.

Furthermore, with simple planning, fast delivery, up to 90% reduction in installation time and labor cost, bandwidth virtually no testing or troubleshooting required, Belden's 10GX Pre-Terminated Cabling System delivers the promise of pre-terminated cabling systems: dramatically reduced installation time, cost-savings, and the reliability and performance of factory terminations – all without compromises or trade-offs.

Utilize REVConnect Jacks for your standard LAN deployments and Data Center applications reducing inventory and part numbers



Belden understands that the ultimate goal in Data Center networks is to have zero downtime or 'extreme' network availability. In a risk-averse environment with very strict schedule constraints and budgets, demanding reliability and performance without compromise is a must. Belden's 10GX Pre-Terminated Cabling System delivers fast-deployment, with built-in reliability combined with guaranteed performance and headroom. Moreover, the system

is fully supported under Belden's IBDN 10GX Certification Program including guaranteed bandwidth of 625MHz, total support for 10 Gb/s Ethernet, and Belden's 25-Year IBDN Product Warranty.





## Pre-Term 10GX REVConnect Connectivity

Description	Part Number
<b>10GX REVConnect iPLM Ready Patch Panels (Preloaded)</b>	
10GX REVConnect 24-port UTP Cat6A iPLM Ready Panel	PPC6AUR
10GX REVConnect 24-port STP Cat6A iPLM Ready Panel	PPC6ASR
<i>Includes all Connectivity, without RFID &amp; Hardware</i>	
<b>10GX REVConnect Patch Panels (Preloaded)</b>	
10GX REVConnect 24-port UTP Patch Panel	RVAPPF1U24BK
10GX REVConnect 24-port UTP Angled Patch Panel	RVAPPA1U24BK
<b>10GX Pre-Terminated Cable Assembly, 4-Pair, 23 AWG Solid, T568A/B-T568A, 6-Cables Bundle</b>	
10GX UTP REVConnect Assembly LSZH, IEC-1/Eca, White	CB06AUCT1WxxxM
10GX UTP REVConnect Assembly LSZH, Cca, White	CB06AUCT3WxxxM
10GX S/FTP REVConnect Assembly LSZH, IEC-1/Eca, White	CB06ASCT1WxxxM
10GX S/FTP REVConnect Assembly LSZH, Cca, White	CB06ASCT3WxxxM
<i>Use xxx to specify length in meter - 03-15 mt. in increments of 1 mt. - 15-80 mt. in increments of 5 mt.</i>	
<b>Copper Connectivity Patch Cords</b>	
10GX Patch Cords UTP BLUE, LSNH, 1m	CA24106001M
10GX Patch Cords UTP BLUE, LSNH, 2m	CA24106002M
10GX Patch Cords UTP BLUE, LSNH, 3m	CA24106003M
10GX Patch Cords UTP BLUE, LSNH, 5m	CA24106005M
10GX Patch Cords STP BLUE, LSNH, 1m	CAE4106001M
10GX Patch Cords STP BLUE, LSNH, 2m	CAE4106002M
10GX Patch Cords STP BLUE, LSNH, 3m	CAE4106003M
10GX Patch Cords STP BLUE, LSNH, 5m	CAE4106005M

## 10GX KeyConnect® Coupler Pre-Terminated Cabling System

### Pre-Term Made Easy™

At the heart of Belden's 10GX Pre-Terminated Cabling System are two core components: 10GX Pre-Terminated Cable Assemblies and 10GX RJ45 Modular Couplers. Individually, these components offer superior reliability and performance. Together, they deliver the full potential of pre-terminated copper cabling solutions. The Belden solution is referred to as 'Pre-Term Made Easy' because it brings simplicity to the configuring and ordering process and it offers ease of installation through flexible 10GX Cable Assemblies and plug-and-play 10GX RJ45 Connectivity. Furthermore, with simple planning, fast delivery, up to 90% reduction in installation time and labor cost, bandwidth virtually no testing

or troubleshooting required, Belden's 10GX Pre-Terminated Cabling System delivers the promise of pre-terminated cabling systems: dramatically reduced installation time, cost-savings, and the reliability and performance of factory terminations – all without compromises or trade-offs.



### Ideal for Data Centers

Belden understands that the ultimate goal in Data Center networks is to have zero downtime or 'extreme' network availability. In a risk-averse environment with very strict schedule constraints and budgets, demanding reliability and performance without compromise is a must. Belden's 10GX Pre-Terminated Cabling System delivers fast-deployment, with built-in reliability combined with guaranteed performance and headroom. Moreover, the system is fully supported under Belden's IBDN 10GX Certification Program including guaranteed bandwidth of 625MHz, total support for 10 Gb/s Ethernet, and Belden's 25-Year IBDN Product Warranty.

## Pre-Term 10GX KeyConnect Connectivity

Description	Part Number
<b>10GX KeyConnect iPLM Ready Coupler Panels (Preloaded)</b>	
10GX KeyConnect 24-port UTP Cat6A iPLM Ready Coupler Panel	PPC6AUC
10GX KeyConnect 24-port STP Cat6A iPLM Ready Coupler Panel	PPC6ASC
<i>Includes all Connectivity, without RFID &amp; Hardware</i>	
<b>10GX KeyConnect Patch Coupler Panels (Preloaded)</b>	
10GX KeyConnect 24-port UTP Coupler Panel	AX104141
10GX KeyConnect 24-port UTP Angled Coupler Panel	AX105300
10GX KeyConnect 48-port UTP Coupler Panel	AX104592
10GX KeyConnect 48-port UTP Angled Coupler Panel	AX105348
<b>10GX Pre-Terminated Cable Assembly, 4-Pair, 23 AWG Solid, T568A/B-T568A, 6-Cable Bundle</b>	
10GX UTP REVConnect Assembly LSZH, IEC-1/Eca, White	CA24109xxxMA06
10GX S/FTP REVConnect Assembly LSZH, IEC-1/Eca, White	CAE4109xxxMA06
<i>Use xxx to specify length in meter - 03-15 mt. in increments of 1 mt. - 15-80 mt. in increments of 5 mt</i>	
<b>Copper Connectivity Patch Cords</b>	
10GX Patch Cords UTP BLUE, LSNH, 1m	CA24106001M
10GX Patch Cords UTP BLUE, LSNH, 2m	CA24106002M
10GX Patch Cords UTP BLUE, LSNH, 3m	CA24106003M
10GX Patch Cords UTP BLUE, LSNH, 5m	CA24106005M
10GX Patch Cords STP BLUE, LSNH, 1m	CAE4106001M
10GX Patch Cords STP BLUE, LSNH, 2m	CAE4106002M
10GX Patch Cords STP BLUE, LSNH, 3m	CAE4106003M
10GX Patch Cords STP BLUE, LSNH, 5m	CAE4106005M



## GLOBAL LOCATIONS

For more information, please visit us at:  
[www.belden.com](http://www.belden.com)



**Be certain  
you stay  
in touch.**

### EUROPE/MIDDLE EAST/AFRICA

#### Germany

Phone: +49-7127-14-0  
[venlo.salesinfo@belden.com](mailto:venlo.salesinfo@belden.com)

#### France

Phone: +33-472-109-990  
[lyon.salesinfo@belden.com](mailto:lyon.salesinfo@belden.com)

#### Italy

Phone: +39-039-5965-250  
[info.milano@belden.com](mailto:info.milano@belden.com)

#### Russia

Phone: +7-495-787-06-55  
[info@belden.ru](mailto:info@belden.ru)

#### Spain

Phone: +34-91-746-17-30  
[madrid.salesinfo@belden.com](mailto:madrid.salesinfo@belden.com)

#### Sweden

Phone: +46-40-699-88-60  
[venlo.salesinfo@belden.com](mailto:venlo.salesinfo@belden.com)

#### The Netherlands

Phone: +31-773-878-555  
[venlo.salesinfo@belden.com](mailto:venlo.salesinfo@belden.com)

#### United Arab Emirates

Phone: +971-4-391-0490  
[dubai.salesinfo@belden.com](mailto:dubai.salesinfo@belden.com)

#### United Kingdom

Phone: +44-161-49837-49  
[manchester.salesinfo@belden.com](mailto:manchester.salesinfo@belden.com)

### AMERICAS

#### USA

Phone: +1-800-BELDEN1  
(1-800-235-3361)

### ASIA/PACIFIC

#### Singapore

Phone: +65-6879-9800  
[apac.ecsmarketing@belden.com](mailto:apac.ecsmarketing@belden.com)

#### China

Phone: +86-21-5445-2388  
[apac.ecsmarketing@belden.com](mailto:apac.ecsmarketing@belden.com)