

REVConnect Connectivity System

PRODUCT BULLETIN 



A Connectivity System that is Easy to Learn and Even Easier to Deploy

Installers no longer have to choose between a complicated, lengthy termination that takes too much time and a simple, fast termination that needs to be redone a few times to get right. Relying on a single termination method, the REVConnect® Connectivity System uses a universal termination core for all shielded and unshielded Category 5e, 6 and 6A RJ45 connections. Designed based on feedback from installers, integrators and consultants, REVConnect can cut termination time by up to 60%.

Key Features

- Highly reliable termination for a secure, gas-tight connection
- Allows switching from jacks to plugs (or vice versa) without re-terminating
- Universal wiring manager supports all Category 5e, 6 and 6A cables
- Single tool covers all steps of the termination process, including cable preparation
- Plenum rated for safe connectivity in air-handling spaces
- Core cap protects connector during construction

Key Applications

- Enterprise LAN
- Power over Ethernet (PoE)
- Consolidation Points
- Field-term
- Pre-term

Benefits at a Glance

- Simplifies termination and reduces rework in category cable terminations, with no pair separation needed
- Improves network uptime with strong, reliable insulation piercing contacts
- Terminates a jack or a plug onto a single core interface compatible with eight RJ45 modules
- Supports reliable, easy termination for wired LANs and IoT devices needing up to 100W of power, like WAPs, cameras, LED lighting, AV system components, etc.
- Eliminates punchdown or single-wire crimping process
- Reduces lengthy technician/installer training requirements

For more information, call
1.800.BELDEN.1 (1.800.235.3361) or visit
www.belden.com/REVConnect

Ordering Information

REVConnect 10GX Category 6A

Description	Elec White ●	Black ●	Gray ●	Ivory ●	Almond ●		
REVConnect 10GX Jack - Single Pack	RVAMJKUEW-S1	RVAMJKUBK-S1	RVAMJKUGY-S1	RVAMJKUIV-S1	RVAMJKUAL-S1		
REVConnect 10GX Jack - Bulk Pack	RVAMJKUEW-B24	RVAMJKUBK-B24	RVAMJKUGY-B24	RVAMJKUIV-B24	RVAMJKUAL-B24		
Description	Brown ●	Red ●	Orange ●	Yellow ●	Green ●	Blue ●	Purple ●
REVConnect 10GX Jack - Single Pack	RVAMJKUBR-S1	RVAMJKURD-S1	RVAMJKUOR-S1	RVAMJKUYL-S1	RVAMJKUGN-S1	RVAMJKUBL-S1	RVAMJKUPR-S1
REVConnect 10GX Jack - Bulk Pack	RVAMJKUBR-B24	RVAMJKURD-B24	RVAMJKUOR-B24	RVAMJKUYL-B24	RVAMJKUGN-B24	RVAMJKUBL-B24	RVAMJKUPR-B24
Description	Brown TIA ●	Red TIA ●	Orange TIA ●	Yellow TIA ●	Green TIA ●	Blue TIA ●	Purple TIA ●
REVConnect 10GX Jack - Single Pack	RVAMJKUTN-S1	RVAMJKUTR-S1	RVAMJKUTO-S1	RVAMJKUTY-S1	RVAMJKUTG-S1	RVAMJKUTB-S1	RVAMJKUTP-S1
REVConnect 10GX Jack - Bulk Pack	RVAMJKUTN-B24	RVAMJKUTR-B24	RVAMJKUTO-B24	RVAMJKUTY-B24	RVAMJKUTG-B24	RVAMJKUTB-B24	RVAMJKUTP-B24



REVConnect CAT6+ Category 6

Description	Elec White ●	Black ●	Gray ●	Ivory ●	Almond ●		
REVConnect CAT6+ Jack - Single Pack	RV6MJKUEW-S1	RV6MJKUBK-S1	RV6MJKUGY-S1	RV6MJKUIV-S1	RV6MJKUAL-S1		
REVConnect CAT6+ Jack - Bulk Pack	RV6MJKUEW-B24	RV6MJKUBK-B24	RV6MJKUGY-B24	RV6MJKUIV-B24	RV6MJKUAL-B24		
Description	Brown ●	Red ●	Orange ●	Yellow ●	Green ●	Blue ●	Purple ●
REVConnect CAT6+ Jack - Single Pack	RV6MJKUBR-S1	RV6MJKURD-S1	RV6MJKUOR-S1	RV6MJKUYL-S1	RV6MJKUGN-S1	RV6MJKUBL-S1	RV6MJKUPR-S1
REVConnect CAT6+ Jack - Bulk Pack	RV6MJKUBR-B24	RV6MJKURD-B24	RV6MJKUOR-B24	RV6MJKUYL-B24	RV6MJKUGN-B24	RV6MJKUBL-B24	RV6MJKUPR-B24
Description	Brown TIA ●	Red TIA ●	Orange TIA ●	Yellow TIA ●	Green TIA ●	Blue TIA ●	Purple TIA ●
REVConnect CAT6+ Jack - Single Pack	RV6MJKUTN-S1	RV6MJKUTR-S1	RV6MJKUTO-S1	RV6MJKUTY-S1	RV6MJKUTG-S1	RV6MJKUTB-S1	RV6MJKUTP-S1
REVConnect CAT6+ Jack - Bulk Pack	RV6MJKUTN-B24	RV6MJKUTR-B24	RV6MJKUTO-B24	RV6MJKUTY-B24	RV6MJKUTG-B24	RV6MJKUTB-B24	RV6MJKUTP-B24



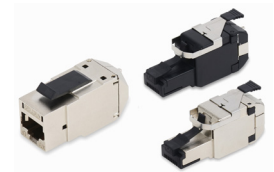
REVConnect CAT5E Category 5e

Description	Elec White ●	Black ●	Gray ●	Ivory ●	Almond ●		
REVConnect CAT5E Jack - Single Pack	RV5MJKUEW-S1	RV5MJKUBK-S1	RV5MJKUGY-S1	RV5MJKUIV-S1	RV5MJKUAL-S1		
REVConnect CAT5E Jack - Bulk Pack	RV5MJKUEW-B24	RV5MJKUBK-B24	RV5MJKUGY-B24	RV5MJKUIV-B24	RV5MJKUAL-B24		
Description	Brown ●	Red ●	Orange ●	Yellow ●	Green ●	Blue ●	Purple ●
REVConnect CAT5E Jack - Single Pack	RV5MJKUBR-S1	RV5MJKURD-S1	RV5MJKUOR-S1	RV5MJKUYL-S1	RV5MJKUGN-S1	RV5MJKUBL-S1	RV5MJKUPR-S1
REVConnect CAT5E Jack - Bulk Pack	RV5MJKUBR-B24	RV5MJKURD-B24	RV5MJKUOR-B24	RV5MJKUYL-B24	RV5MJKUGN-B24	RV5MJKUBL-B24	RV5MJKUPR-B24
Description	Brown TIA ●	Red TIA ●	Orange TIA ●	Yellow TIA ●	Green TIA ●	Blue TIA ●	Purple TIA ●
REVConnect CAT5E Jack - Single Pack	RV5MJKUTN-S1	RV5MJKUTR-S1	RV5MJKUTO-S1	RV5MJKUTY-S1	RV5MJKUTG-S1	RV5MJKUTB-S1	RV5MJKUTP-S1
REVConnect CAT5E Jack - Bulk Pack	RV5MJKUTN-B24	RV5MJKUTR-B24	RV5MJKUTO-B24	RV5MJKUTY-B24	RV5MJKUTG-B24	RV5MJKUTB-B24	RV5MJKUTP-B24



REVConnect 10GX, CAT6+, CAT5E Shielded Jacks, Shielded and Unshielded Plugs

Package Size	10GX Shielded Jacks	CAT6+ Shielded Jacks	CAT5E Shielded Jacks	10GX Shielded Plugs	10GX UTP Plugs
Single Pack	RVAMJKSME-S1	RV6MJKSME-S1	RV5MJKSME-S1	RVAFPSME-S1	RVAFPUBK-S1
Bulk Pack (24 Modules)	RVAMJKSME-B24	RV6MJKSME-B24	RV5MJKSME-B24	RVAFPSME-B24	RVAFPUBK-B24



REVConnect Tool and Accessories

Universal Termination Tool	Tool Spare Blade Set	Cable Prep Tool Replacement	Tool Belt Clip	Dust Caps for Jacks	Icons for Jacks	Bulk Pack of REVConnect Cores
RVUTTO1	RVUTB01	RVUCTO1	RVUTC01	RVUDCXX-B24	RVUICXX-B24	RVUCOEW-B50
Includes tool, cable prep insert, and spare blade set	Optional extra set of blades with Allen key included	Optional cable prep tool replacement insert	Optional belt clip for universal tool	Optional dust caps for all jacks; XX is color code, pack of 24	Optional icons for all jacks; XX is color code, pack of 24	Bulk pack of 50 cable managers and caps

Color codes: AL (almond), BK (black), BL (blue), BR (brown), EW (electric white), GN (green), GY (gray), IV (ivory), OR (orange), PR (purple), RD (red), YL (yellow), TB (TIA blue), TG (TIA green), TN (TIA brown), TO (TIA orange), TP (TIA purple), TR (TIA red), TY (TIA yellow)



© 2022 | Belden, Hirschmann, GarrettCom, Tofino Security, Lumberg Automation and the Belden logo are trademarks or registered trademarks of Belden Inc. or its affiliated companies in the United States and other jurisdictions. Belden and other parties may also have trademark rights in other terms used herein.