

User's Guide

TRENDNET®



8-Port Gigabit EdgeSmart Switch

TEG-S80ES

Contents

Product Overview	1
Package Contents	1
Features	1
Product Hardware Features.....	2
Switch Installation	3
Desktop Hardware Installation	3
Basic IP Configuration	3
Connect additional devices to your switch.....	6
Accessing switch management interfaces	7
Access your switch web management page	7
System Info	7
View your switch status information	7
System	9
System Management.....	9
Set your system information	9
IPv4 Settings	10
Set your IPv4 settings	10
Administration	11
Change administrator password.....	11
Timeout.....	12
Change web idle login timeout settings	12
SNMP	13
Global Settings	13
Community Table Settings.....	14
Host Settings.....	15
Statistics.....	16

View Statistics.....	16
View Traffic Information Statistics.....	16
IEEE 802.3az EEE	17
Enable IEEE 802.3az Power Saving Mode	17
Network	18
Physical Interface.....	18
Configure Physical Interfaces	18
Spanning Tree	20
Spanning Tree Global Settings	20
Configure Spanning Tree Protocol port settings.....	21
Trunk.....	22
Configure port trunk settings (Trunk/Link Aggregation)	22
Mirroring	23
Configure port mirror settings.....	23
Loopback Detection.....	24
Enable loopback detection	24
Static Unicast	26
Add static unicast entries to the switch	26
Static Multicast	27
Add static multicast entries to the switch	27
IGMP Snooping	28
Configure IGMP Snooping Settings.....	28
Configure IGMP Snooping Group Settings.....	28
Bandwidth Control	29
Configure Storm Control.....	29
Set Ingress Rate Limiting.....	30
Set Egress Rate Limiting.....	31
VLAN	32
Add, modify, and remove VLANs.....	32

- Configure VLAN Port Settings 33
- Configure the VLAN forwarding Table 34
- View the switch VLAN dynamic forwarding table..... 35
- Create a private VLAN..... 35
- Voice VLAN 37
 - Configuring Voice VLANs 37
 - Create a Voice VLAN 38
 - Configure Voice VLAN OUI settings 39
- QoS (Quality of Service).....41**
 - CoS 41
 - Set CoS priority settings..... 41
 - Port Priority 42
 - Set Port Priority 42
 - DSCP..... 43
 - Set DSCP (Differentiated Services Code Point) Class Mapping settings 43
 - Scheduling Algorithm..... 44
 - Set the Scheduling Algorithm 44
- Tools.....45**
 - Firmware Upgrade 45
 - Upgrade your switch firmware 45
 - Configuration 46
 - Backup and Restore your switches configuration setting..... 46
 - Diagnostics..... 47
 - Cable Diagnostics Test 47
 - Reboot 48
 - Reboot/Reset to Factory Defaults 48

- Using the Switch Management Utility 49**
 - System Requirements..... 49
 - Installation 49
 - Using the Utility 50
 - Launching the Utility..... 50
 - Discovery List 51
 - Monitor List 51
 - Device Setting 52
 - Main Menu Options..... 53
- Technical Specifications 54**
- Troubleshooting 56**
- Appendix 57**

Product Overview



TEG-S80ES

Package Contents

In addition to your switch, the package includes:

- Quick Installation Guide
- Power adapter (5V DC, 1A)

If any package contents are missing or damaged, please contact the retail store, online retailer, or reseller/distributor from which the product was purchased.

Features

TRENDnet's 8-Port Gigabit EdgeSmart Switch, model TEG-S80ES, is a cost-effective desktop managed switch solution for high-speed gigabit applications. This EdgeSmart switch features the most commonly used managed switch features, reducing unnecessary switch complexity. The web-based management interface offers features for traffic control, RSTP, VLAN, QoS, access control, static link aggregation, and monitoring. TRENDnet's TEG-S80ES allows for simple network integration into your SMB network.

EdgeSmart Management

Provides an easy-to-use web-based management interface for reduced switch configuration complexity and offers a combination of more commonly used SMB management features for easy deployment.

Integration Flexibility

Managed features include loopback detection, RSTP, static link aggregation, VLAN, IGMP Snooping, and QoS for flexible network integration.

Monitoring

This desktop managed switch offers SNMP, SNMP Trap, and Port Mirroring for support administrator monitoring solutions.

Ports

Eight gigabit ports provide a 16Gbps switching capacity

Compact Design

With a compact and lightweight metal housing design, this switch is well-suited for desktop or wall mount installations

Network Management

The web-based management interface offers features for loopback detection, RSTP, static link aggregation, VLAN, IGMP Snooping, and QoS

Monitoring

SNMP, SNMP Trap, and Port Mirroring support administrator monitoring solutions

Troubleshooting

Traffic statistics and a convenient cable diagnostic test

Fanless

Its fanless design is ideal for quiet environments that require silent operation

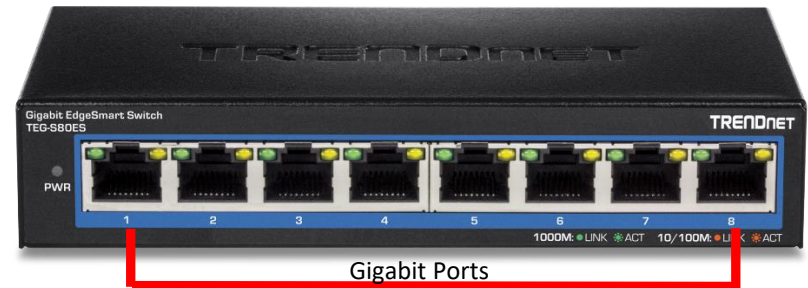
LED Indicators

The desktop managed switch includes LED indicators that convey port status

LED	State	Status
PWR (Green)	ON	When the PWR LED is on, the device is powered on.
	OFF	When the device is not receiving power, the PWR LED is OFF.
Ports 1-8 Left LED (Green)	ON	Network speed at 1000 Mbps
	BLINKING	Data is transmitting/receiving.
Ports 1-8 Right LED (Amber)	OFF	Ethernet port is not connected.
	ON	Network speed at 10/100 Mbps
	BLINKING	Data is transmitting/receiving.
	OFF	Ethernet port is not connected.

Product Hardware Features

Front View



Rear View



- **Reset Button** – Press and hold the button 1~5 seconds and release to reboot the device. Pressing the button more than 6 seconds will reset the switch to factory defaults. The ports LEDs will display Amber and then turn off to indicate that the reset was initiated.
- **Gigabit Ethernet Ports (1-8)** – Connect network devices.

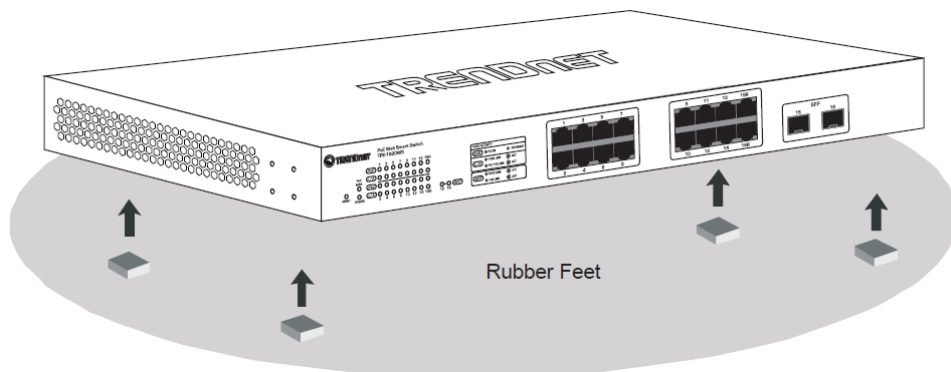
Switch Installation

Desktop Hardware Installation

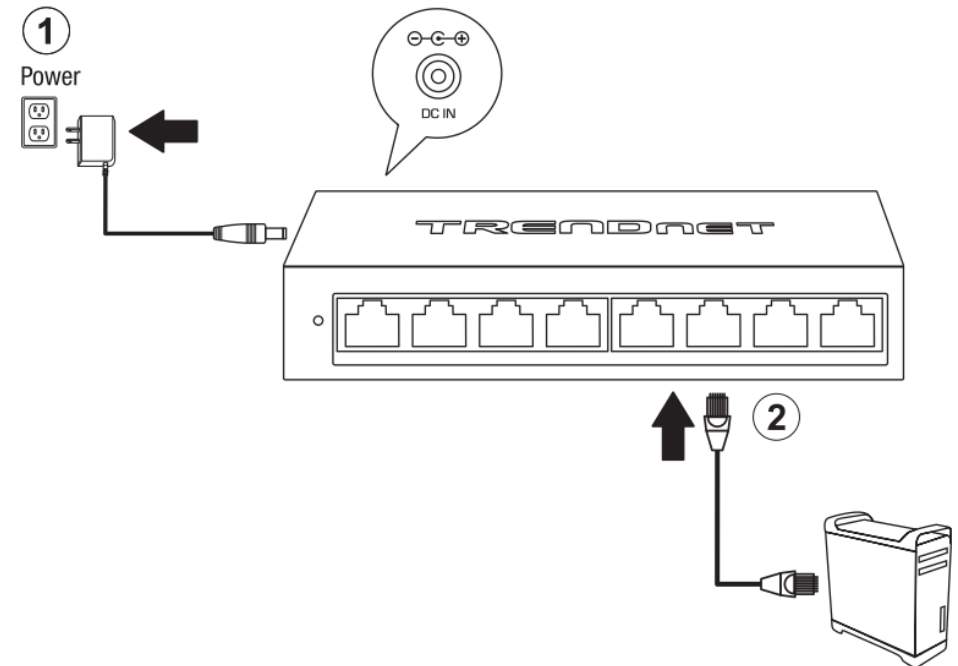
The site where you install the switch may greatly affect its performance. When installing, consider the following pointers:

Note: Your switch model may be different than the one shown in the example illustrations.

- Install the Switch in a fairly cool and dry place.
- Install the Switch in a site free from strong electromagnetic field generators (such as motors), vibration, dust, and direct exposure to sunlight.
- Leave some space on the sides of the switch for ventilation.
- Install the Switch on a sturdy, level surface that can support its weight, or in an EIA standard-size equipment rack. For information on rack installation, see the next section, Rack Mounting.
- When installing the Switch on a level surface, attach the rubber feet to the bottom of each device. The rubber feet cushion the hub and protect the hub case from scratching.



Basic IP Configuration



3. Assign a static IP address to your computer's network adapter in the subnet of 192.168.10.x (e.g. 192.168.10.25) and a subnet mask of 255.255.255.0.

4. Open your web browser, and type the IP address of the switch in the address bar, and then press **Enter**. The default IP address is **192.168.10.200**.

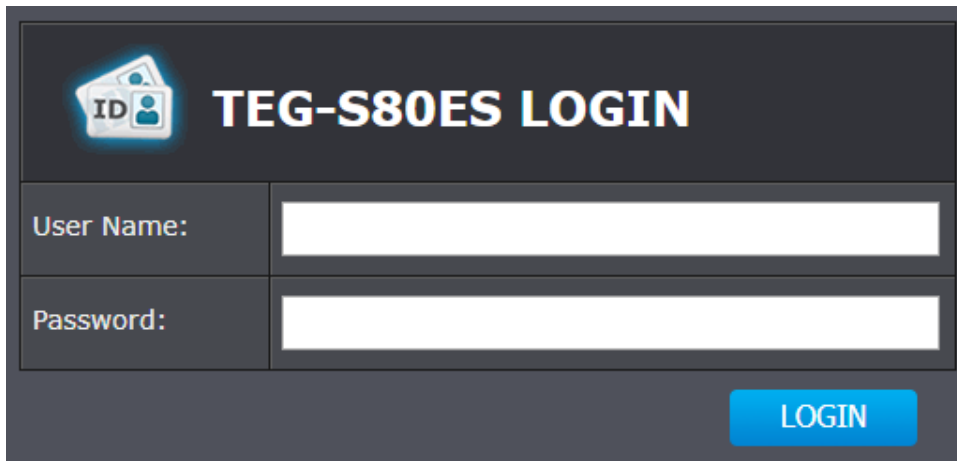


5. Enter the User Name and Password, and then click **Login**. By default:

User Name: **admin**

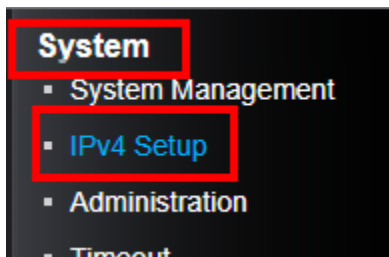
Password: **admin**

Note: User name and password are case sensitive.



The login screen features a dark grey background with a white ID card icon on the left. To the right of the icon, the text "TEG-S80ES LOGIN" is displayed in large, bold, white letters. Below this, there are two white input fields: one for "User Name:" and one for "Password:". At the bottom right of the form is a blue button with the word "LOGIN" in white capital letters.

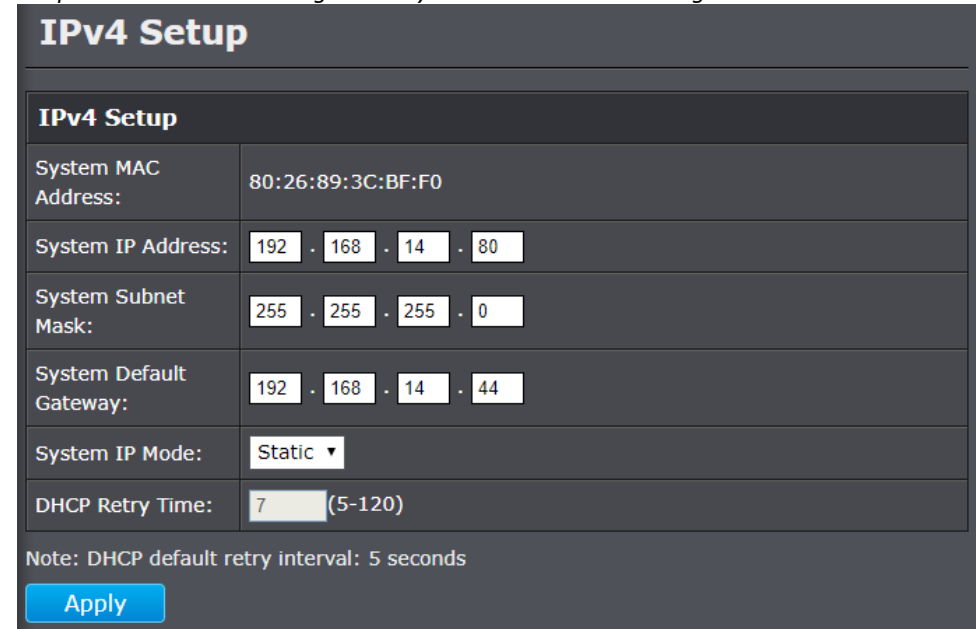
6. Click **System** and then click **IPv4 Setup**.



A dark grey sidebar menu with a white background for the text. The word "System" is at the top and is highlighted with a red rectangular box. Below it are four sub-items: "System Management", "IPv4 Setup" (highlighted with a red rectangular box), "Administration", and "Timeout".

7. Configure the switch IP address settings to be within your network subnet, then click **Apply**.

Note: You may need to modify the static IP address settings of your computer's network adapter to IP address settings within your subnet in order to regain access to the switch.



The IPv4 Setup screen has a dark grey header with the title "IPv4 Setup" in white. Below the header is a table of configuration fields:

IPv4 Setup	
System MAC Address:	80:26:89:3C:BF:F0
System IP Address:	192 . 168 . 14 . 80
System Subnet Mask:	255 . 255 . 255 . 0
System Default Gateway:	192 . 168 . 14 . 44
System IP Mode:	Static ▾
DHCP Retry Time:	7 (5-120)

Below the table, there is a note: "Note: DHCP default retry interval: 5 seconds". At the bottom left of the form is a blue button labeled "Apply".

8. When confirmation message appears click **OK**.

The management session will be disconnected. Use new IP address to connect to device.



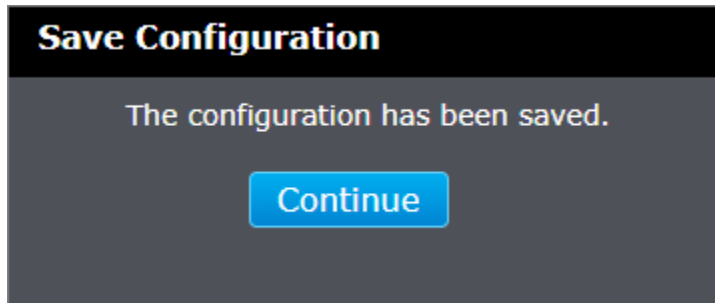
A confirmation dialog with a dark grey background. It contains two buttons: a blue button with the text "OK" and a white button with a grey border and the text "Cancel".

NOTE: The configured settings are only applied to the switch's **temporary** memory and will be lost upon the next power-cycle. Please follow these next steps to save the configurations to the switch's NV-RAM to ensure the settings will remain throughout power-cycles and reboots:

1. From the menu on the left: click on **Save**, then click the blue button **Save Settings to Flash**.



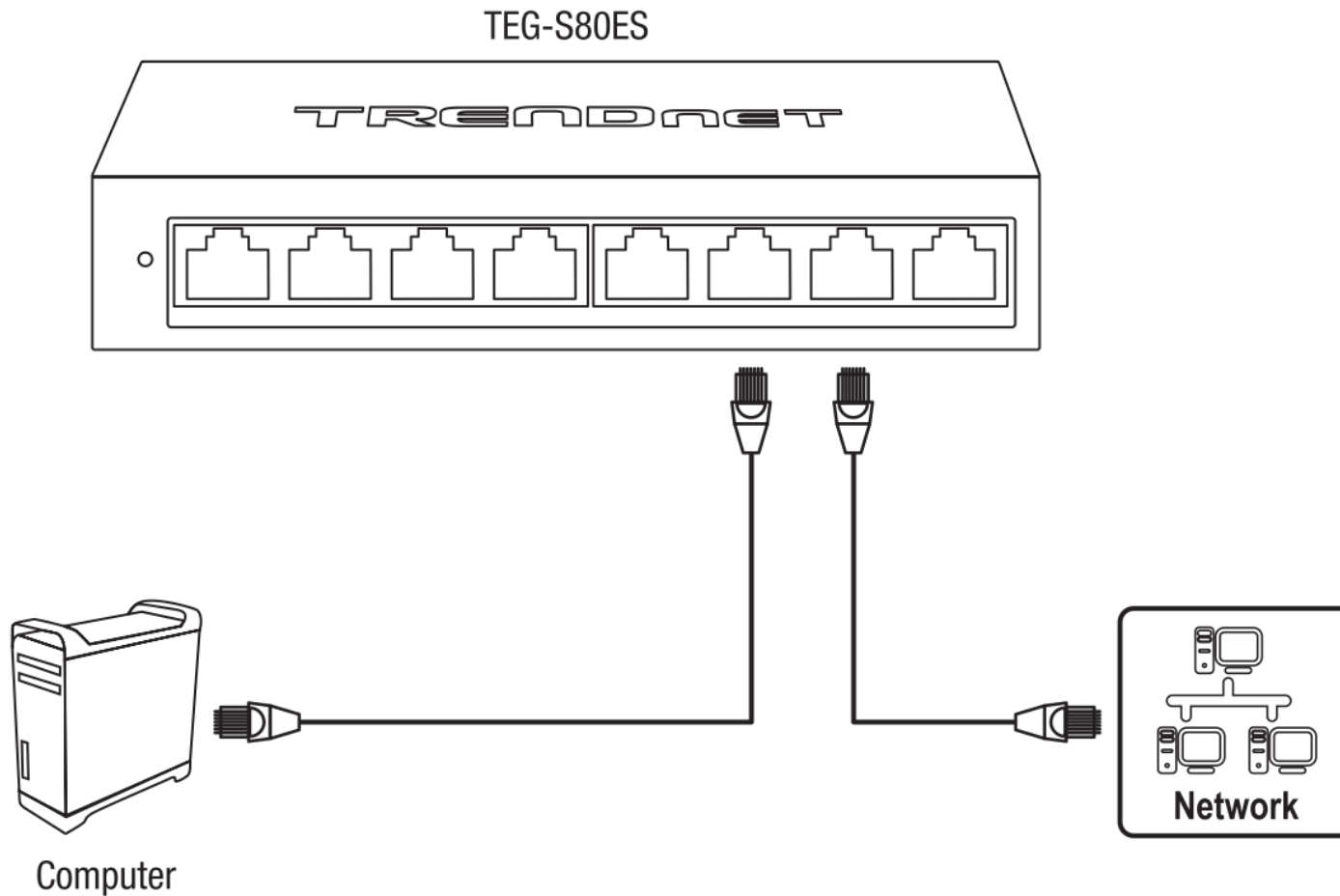
2. Click **Continue** to return to the Web Configuration of your switch.



Connect additional devices to your switch

You can connect additional computers or other network devices to your switch using Ethernet cables to connect them to one of the available Gigabit Ports (1-8). Check the status of the LED indicators on the front panel of your switch to ensure the physical cable connection from your computer or device.

Note: If you encounter issues connecting to your network, there may be a problem with your computer or device network settings. Please ensure that your computer or device network settings (also called TCP/IP settings) are configured properly within the network subnet your switch is connected.



Accessing switch management interfaces

Access your switch web management page

Note: Your switch default management IP address <http://192.168.10.200> is accessed through the use of your Internet web browser (e.g. Internet Explorer®, Firefox®, Chrome™, Safari®, Opera™) and will be referenced frequently in this User's Guide. Throughout this user's guide, the term Web Configuration will be used to reference access from web management page.

1. Open your web browser and go to the IP address <http://192.168.10.200>. Your switch will prompt you for a user name and password.



2. Enter the user name and password. By default:

User Name: **admin**

Password: **admin**

Note: User Name and Password are case sensitive.

System Info

View your switch status information

Switch Info

You may want to check the general system information of your switch such as firmware version, boot loader information and system uptime. Other information includes administration information, and System MAC Address IPv4 information.

1. Log into your switch management page (see "[Access your switch management page](#)" on page 7).
2. Click on **Switch Info**.

Switch Information

- **System Up For** – The duration your switch has been running continuously without a restart/power cycle (hard or soft reboot) or reset.
- **Runtime Image:** The current software or firmware version your switch is running.
- **Boot Loader** – The current boot loader version your switch is running.

Switch Information	
System Up For:	0 day(s),6 hr(s),24 min(s),15 sec(s)
Runtime Image:	1.01.012
Boot Loader:	1.00.003

Administration Information

- **System Name** – Displays the identifying system name of your switch. This information can be modified under the **System** section.
- **System Location** - Displays the identifying system location of your switch. This information can be modified under the **System** section.
- **System Contact** – Displays the identifying system contact or system administrator of your switch. This information can be modified under the **System** section.

Administration Information	
System Name:	
System Location:	
System Contact:	

System MAC Address, IPv4 Information

- **MAC Address:** Displays the switch system MAC address.
- **IP Address** – Displays the current IPv4 address assigned to your switch.
- **Subnet Mask** – Displays the current IPv4 subnet mask assigned to your switch.
- **Default Gateway** – Displays the current gateway address assigned to your switch.

System MAC Address, IPv4 Information

MAC Address:	00:01:02:03:04:05
IP Address:	192.168.10.200
Subnet Mask:	255.255.255.0
Default Gateway:	0.0.0.0

Automatic Network Features

- **IPv4 DHCP Client Mode:** Displays if your switch IPv4 address setting is set to DHCP client.

Automatic Network Features

IPv4 DHCP Client Mode:	Disabled
------------------------	----------

System

System Management

Set your system information

System > System Management

This section explains how to assign a name, location, and contact information for the switch. This information helps in identifying each specific switch among other switches in the same local area network. Entering this information is optional.

1. Log into your switch management page (see "[Access your switch management page](#)" on page 7).
2. Click on **System**, and click on **System Management**.
3. Review the settings. When you have completed making changes, click **Apply** to save the settings.
 - **System Name** - Specifies a name for the switch, the name is optional and may contain up to 15 characters.
 - **System Location** - Specifies the location of the switch. The location is optional and may contain up to 30 characters.
 - **System Contact** - Specifies the name of the network administrator responsible for managing the switch. This contact name is optional and may contain up to 30 characters.

System Setting	
System Name:	<input type="text"/>
System Location:	<input type="text"/>
System Contact:	<input type="text"/>

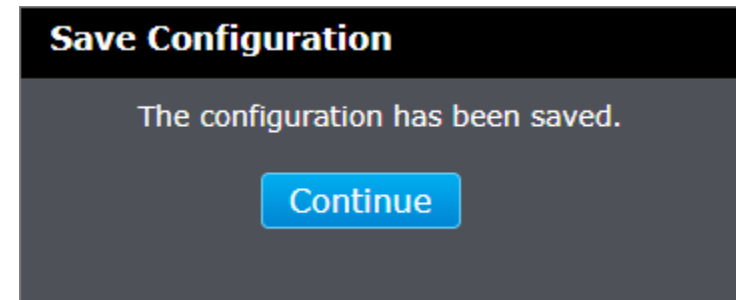
4. Click **Apply**.

NOTE: The configured settings are only applied to the switch's **temporary** memory and will be lost upon the next power-cycle. Please follow these next steps to save the configurations to the switch's NV-RAM to ensure the settings will remain throughout power-cycles and reboots:

1. From the menu on the left: click on **Save**, then click the blue button **Save Settings to Flash**.



2. Click **Continue** to return to the Web Configuration of your switch.



IPv4 Settings

Set your IPv4 settings

System > IPv4 Setup

This section allows you to change your switch IPv4 address settings. Typically, the IP address settings should be changed to match your existing network subnet in order to access the switch management page on your network.

Default Switch IPv4 Address: 192.168.10.200

Default Switch IPv4 Subnet Mask: 255.255.255.0

1. Log into your switch management page (see "[Access your switch management page](#)" on page 7).

2. Click on **System**, and click on **IPv4 Setup**.

3. Review the settings. When you have completed making changes, click **Apply** to save the settings.

- **System MAC Address:** Displays the switch MAC address information.
- **System IP Address:** Enter the new switch IP address. (e.g. 192.168.200.200)
- **System Subnet Mask:** Enter the new switch subnet mask. (e.g. 255.255.255.0)
- **System Default Gateway:** Enter the default gateway IP address. (e.g. 192.168.200.1 or typically your router/gateway to the Internet).
- **System IP Mode:** Click the drop-down list and select **Static** to manually specify your IP address settings or **DHCP** to allow your switch to obtain IP address settings automatically from a DHCP server on your network.

IPv4 Setup	
System MAC Address:	00:01:02:03:04:05
System IP Address:	192 . 168 . 10 . 200
System Subnet Mask:	255 . 255 . 255 . 0
System Default Gateway:	0 . 0 . 0 . 0
System IP Mode:	Static ▾

4. Click **Apply**.

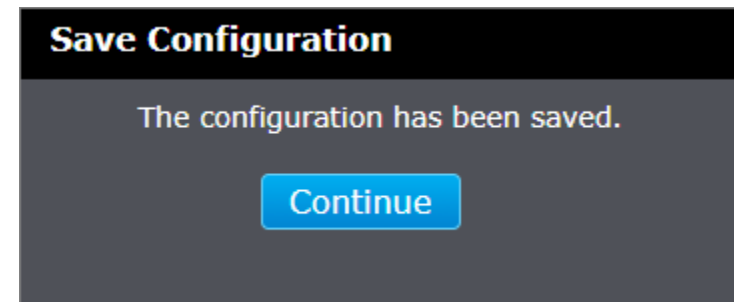


NOTE: The configured settings are only applied to the switch's **temporary** memory and will be lost upon the next power-cycle. Please follow these next steps to save the configurations to the switch's NV-RAM to ensure the settings will remain throughout power-cycles and reboots:

1. From the menu on the left: click on **Save**, then click the blue button **Save Settings to Flash**.



2. Click **Continue** to return to the Web Configuration of your switch.



Administration

Change administrator password

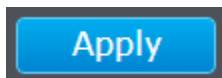
System > Administration

This section explains how to change the administrator password for access to the switch management page.

1. Log into your switch management page (see "[Access your switch management page](#)" on page 7).
2. Click on **System**, and click on **Administration**.
3. Review the settings.

Administration Settings	
Old Password:	<input type="text"/> (Maximum length is 20)
New Password:	<input type="text"/> (Maximum length is 20)
Confirm Password:	<input type="text"/>

4. Click **Apply**.

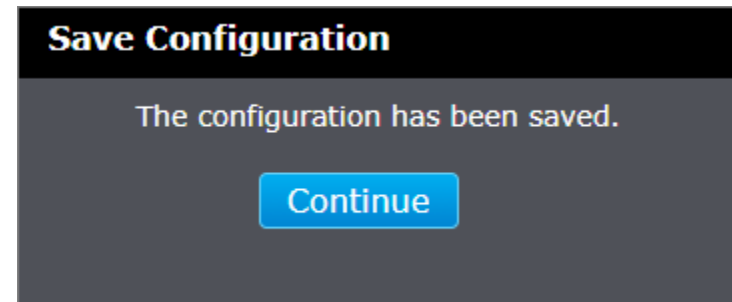


NOTE: The configured settings are only applied to the switch's **temporary** memory and will be lost upon the next power-cycle. Please follow these next steps to save the configurations to the switch's NV-RAM to ensure the settings will remain throughout power-cycles and reboots:

1. From the menu on the left: click on **Save**, then click the blue button **Save Settings to Flash**.



2. Click **Continue** to return to the Web Configuration of your switch.



Timeout

Change web idle login timeout settings

System > Timeout

This section explains how to modify the switch management page idle timeout settings.

1. Log into your switch management page (see "[Access your switch management page](#)" on page 7).
2. Click on **System**, and click on **Timeout**.
3. Review the settings. Click **Apply** to save changes.
 - **Web Idle Timeout** - Enter the idle period in minutes, when the switch will automatically log out a user from the switch management page.

Timeout Settings	
Web Idle Timeout:	<input type="text" value="10"/> Min.(3-60)
<input type="button" value="Apply"/>	

NOTE: The configured settings are only applied to the switch's **temporary** memory and will be lost upon the next power-cycle. Please follow these next steps to save the configurations to the switch's NV-RAM to ensure the settings will remain throughout power-cycles and reboots:

1. From the menu on the left: click on **Save**, then click the blue button **Save Settings to Flash**.

Switch Info	Save Settings to Flash
System	Note:The switch will stop responding while saving the current configuration to flash.
Network	<input type="button" value="Save Settings to Flash"/>
QoS	
Tools	
<input type="button" value="Save"/>	

2. Click **Continue** to return to the Web Configuration of your switch.

Save Configuration
The configuration has been saved.
<input type="button" value="Continue"/>

SNMP

Global Settings

System > SNMP > Global Settings

You can manage a switch by viewing and configuring the management information base (MIB) objects on the device with the Simple Network Management Program (SNMP). This chapter describes how to configure SNMP. A Group Name, IP address of the switch and at least one community string is the minimum required to manage the switch using SNMP.

Note: If you disable the SNMP on the switch, the switch will not be manageable via SNMP using MIBs.

1. Log into your switch management page (see "[Access your switch management page](#)" on page 7).
2. Click on **System**, click on **SNMP**, and click on **Global Settings**.
3. Review the settings. Click **Apply** to save changes.
 - **SNMP Global Settings:** Click the drop-down list to one of the following options.
 - **Enabled** - When you enable this parameter, SNMP is active. You can manage the switch with SNMP network management software and the switch's private MIB.
 - **Disabled** - When you select this parameter, SNMP is inactive.

SNMP Global Settings

SNMP Global State:

- **Trap Settings:** Enable this setting to enable output to a SNMP Trap Host for the following toggle-able conditions:
 - **SNMP Authentication Trap** – When a client connects to the switch with SNMP
 - **Port Link Up** – When any port on the switch goes from an inactive state to active.
 - **Port Link Down** – When any active port on the switch becomes inactive.
 - **ColdStart** – When the switch is powered on by connecting to a power source.
 - **WarmStart** – When the switch is reboot from a management interface.

Trap Settings

Trap Global State:

SNMP Authentication Trap

Port Link Up

Port Link Down

ColdStart

WarmStart

4. Click **Apply**.

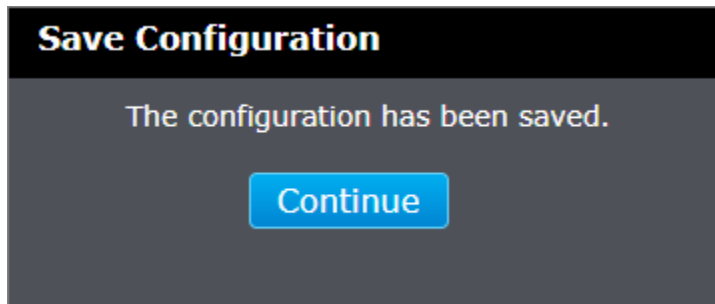
Apply

NOTE: The configured settings are only applied to the switch's **temporary** memory and will be lost upon the next power-cycle. Please follow these next steps to save the configurations to the switch's NV-RAM to ensure the settings will remain throughout power-cycles and reboots:

1. From the menu on the left: click on **Save**, then click the blue button **Save Settings to Flash**.



2. Click **Continue** to return to the Web Configuration of your switch.



Community Table Settings

System > SNMP > Community Table Settings

A community string has attributes for controlling who can use the string and what the string will allow a network management station to do on the switch. The Web Management Utility does not provide any default community strings. You must first define an SNMP User and Group Name on the SNMP User/Group page and then define a Community Name on the SNMP Community Table page.

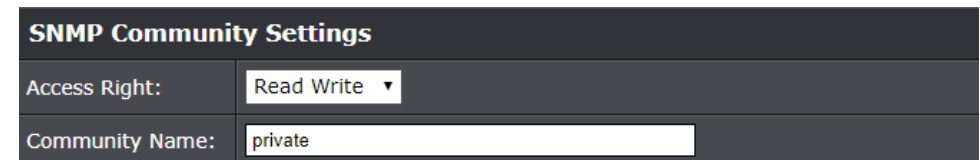
1. Log into your switch management page (see "[Access your switch management page](#)" on page 7).

2. Click on **System**, click on **SNMP**, and click on **Community Table Settings**.

3. Review the settings.

Editing SNMP Community Settings

- Select an **Access Right** – either **Read Write** or **Read Only**.
- Enter a **Community Name (View Policy)**, if you change the default name on this page, you must also update the **Host Settings** to match the community name.
*Note: Host Settings page. If you change a name on the **Community Table Settings** page, you must also change the name on the **Host Settings** page or else the Community entry is displayed, but the agent/manager communication fails.*
- Click **Apply**. The values of the new **Community Name** and its respective access rights are displayed.

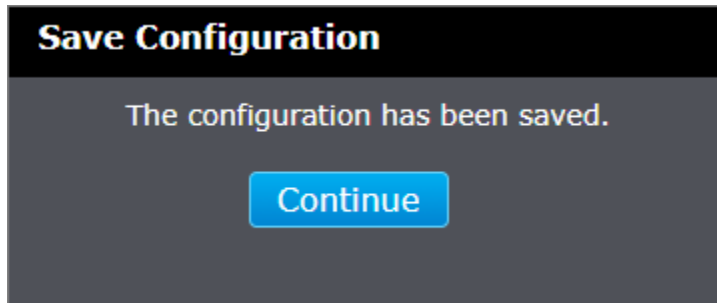


NOTE: The configured settings are only applied to the switch's **temporary** memory and will be lost upon the next power-cycle. Please follow these next steps to save the configurations to the switch's NV-RAM to ensure the settings will remain throughout power-cycles and reboots:

1. From the menu on the left: click on **Save**, then click the blue button **Save Settings to Flash**.



- Click **Continue** to return to the Web Configuration of your switch.



Host Settings

System > SNMP > Host Settings

A Host IP address is used to specify a management device that needs to receive SNMP traps sent by the switch. This IP address is associated with the SNMP Version and a valid Community Name in the Host table of the switch.

- Log into your switch management page (see "[Access your switch management page](#)" on page 7).
- Click on **System**, click on **SNMP**, and click on **Host Settings**.
- Review the settings.
 - Enter the **Host IPv4 Address** for the management device that is to receive the SNMP traps.
 - Select the **SNMP Version**, either **v1** or **v2c**, that is configured for the host management device.
 - Enter a **Community String (Community Name)** that you have defined previously in the SNMP Community table. The **Community String** must correlate with one of the communities displayed on the SNMP Community Table page. If you enter a **Community String** that has not been pre-defined, the Trap Host entry is displayed, but agent/manager communication fails.
 - Click **Apply**. The new host is added to the table.

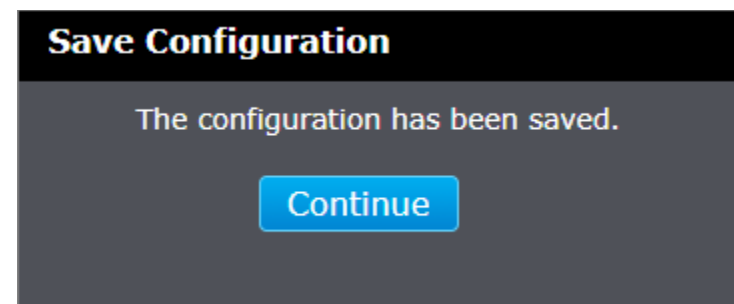
SNMP Host Settings	
Host IPv4 Address:	<input type="text" value="0"/> . <input type="text" value="0"/> . <input type="text" value="0"/> . <input type="text" value="0"/>
User-based Security Model:	SNMPv1 ▾
Community String:	<input type="text" value="public"/>
<input type="button" value="Apply"/>	

NOTE: The configured settings are only applied to the switch's **temporary** memory and will be lost upon the next power-cycle. Please follow these next steps to save the configurations to the switch's NV-RAM to ensure the settings will remain throughout power-cycles and reboots:

- From the menu on the left: click on **Save**, then click the blue button **Save Settings to Flash**.

Switch Info	Save Settings to Flash
System	Note: The switch will stop responding while saving the current configuration to flash.
Network	<input type="button" value="Save Settings to Flash"/>
QoS	
Tools	
Save	

- Click **Continue** to return to the Web Configuration of your switch.



Statistics

View Statistics

System > Statistics

Statistics provide important information for troubleshooting switch problems at the port level. The Web Management Utility provides a two statistics charts, including Traffic Information and Error Information.

View Traffic Information Statistics

System > Statistics > Traffic

1. Log into your switch management page (see "[Access your switch management page](#)" on page 7).
2. Click on **System**, click on **Statistics**.
3. View the Traffic Information Statistics.
 - **TxOK:** Transmit OK, number of frames sent from the switch through the specified port number.
 - **TxErr:** Transmit Error, number of frames that failed to be sent from the switch through the specified port number
 - **RxOK:** Receive OK, number of frames received by the switch through the specified port number.
 - **RxErr:** Receive Error, number of frames that were failed to be received by the switch through the specified port number.
 - **Clear:** Clicking **Apply** will clear the Statistic Information of that row (port number).
 - **Refresh:** Clicking **Refresh** will refresh the data on the page.

Traffic Information					
Port ID	TxOK	TxErr	RxOK	RxErr	Clear
All	-	-	-	-	<input type="button" value="Apply"/>
1	5	0	5	0	<input type="button" value="Apply"/>
2	0	0	0	0	<input type="button" value="Apply"/>
3	0	0	0	0	<input type="button" value="Apply"/>
4	0	0	0	0	<input type="button" value="Apply"/>
5	0	0	0	0	<input type="button" value="Apply"/>
6	0	0	0	0	<input type="button" value="Apply"/>
7	0	0	0	0	<input type="button" value="Apply"/>
8	0	0	0	0	<input type="button" value="Apply"/>
<input type="button" value="Refresh"/>					

IEEE 802.3az EEE

Enable IEEE 802.3az Power Saving Mode

System > IEEE 802.3az EEE

The IEEE 802.3 EEE standard defines mechanisms and protocols intended to reduce the energy consumption of network links during periods of low utilization, by transitioning interfaces into a low-power state without interrupting the network connection. The transmitted and received sides should be IEEE802.3az EEE compliance. By default, the switch disabled the IEEE 802.3az EEE function. Users can enable this feature via the IEEE802.3az EEE setting page.

1. Log into your switch management page (see "[Access your switch management page](#)" on page 7).
2. Click on **System** and click on **IEEE 802.3az EEE**.
3. Click the **IEEE 802.3az EEE Status** drop-down list and select **Enabled** to enable the power saving feature and click **Apply** to save the settings.

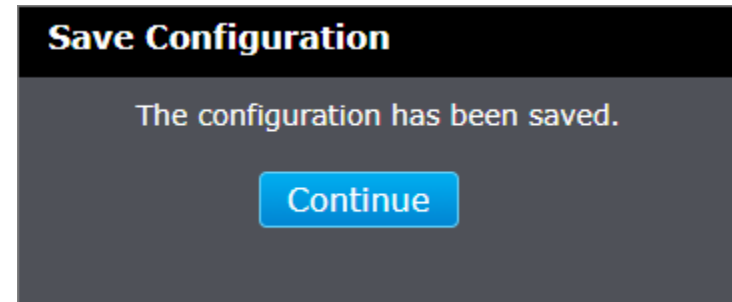
IEEE 802.3az EEE Settings	
IEEE 802.3az EEE Status:	Disabled ▾

NOTE: The configured settings are only applied to the switch's **temporary** memory and will be lost upon the next power-cycle. Please follow these next steps to save the configurations to the switch's NV-RAM to ensure the settings will remain throughout power-cycles and reboots:

1. From the menu on the left: click on **Save**, then click the blue button **Save Settings to Flash**.



2. Click **Continue** to return to the Web Configuration of your switch.



Network

Physical Interface

Configure Physical Interfaces

Network > Physical Interface

This section allows you to configure the physical port parameters such as speed, duplex, flow control, and jumbo frames. This section also reports the current link status of each port and negotiated speed/duplex. Additionally you will be able to set your BPDU ports for Spanning Tree Configuration and EAP ports for 802.1x port-based authentication configuration.

1. Log into your switch management page (see "[Access your switch management page](#)" on page 7).
2. Click on **Network** and click on **Physical Interface**.
3. Review the settings. Click **Apply** to save changes.
 - **Port** - Specifies the port number. The All value indicates ports 1 through 8 on the Switch. You cannot change this parameter. You can use the **All** row value in the **Port** column to apply **Administration Status**, **Mode**, and **Flow Control** settings to all ports at the same time.
 - **Link Status** - This parameter indicates the status of the link between the port and the end node connected to the port. The possible values are:
 - **Up** -This parameter indicates a valid link exists between the port and the end node.
 - **Down** -This parameter indicates the port and the end node have not established a valid link.
 - **Admin. Status:** This parameter indicates the operating status of the port. You can use this parameter to enable or disable a port. You may want to disable a port and prevent packets from being forwarded if a problem occurs with the node or cable connected to the port. You can enable the port to resume normal operation after the problem has been fixed. You can also disable an unused port to secure it from unauthorized connections. The possible values are:

- **Enabled** - This parameter indicates the port is able to send and receive Ethernet frames.
- **Disabled** - This parameter indicates the port is not able to send and receive Ethernet frames.
- **Mode:** This parameter indicates the speed and duplex mode settings for the port. You can use this parameter to set the speed and duplex mode of a port. The possible settings are:
 - **Auto** -This parameter indicates the port is using Auto-Negotiation to set the operating speed and duplex mode. The actual operating speed and duplex mode of the port are displayed in parentheses (for example, "1000/F" for 1000 Mbps full duplex mode) after a port establishes a link with an end node.
 - **Auto (1000F)** -This parameter indicates the port is configured for 1000Mbps operation in Auto-Negotiation mode.
 - **1000/Full** -This parameter indicates the port is configured for 1000Mbps operation in full-duplex mode.
 - **100/Full** -This parameter indicates the port is configured for 100Mbps operation in full-duplex mode.
 - **10/Full** -This parameter indicates the port is configured for 10Mbps operation in full-duplex mode.
 - **100/Half** -This parameter indicates the port is configured for 100Mbps operation in half-duplex mode.
 - **10/Half** -This parameter indicates the port is configured for 10Mbps operation in half-duplex mode.

Note: When selecting a **Mode** setting, the following points apply:

- When a twisted-pair port is set to Auto-Negotiation, the end node should also be set to Auto-Negotiation to prevent a duplex mode mismatch.
- A switch port using Auto-Negotiation defaults to half-duplex if it detects that the end node is not using Auto-Negotiation. This can result in a mismatch if the end node is operating at a fixed duplex mode of full-duplex. To avoid this problem when connecting an end node with a fixed duplex mode of full-duplex to a switch port, disable Auto-Negotiation on the port and set the port's speed and duplex mode manually.

- **Flow Ctrl:** Flow Control, This parameter reflects the current flow control setting on the port. The switch uses a special pause packet to notify the end node to stop transmitting for a specified period of time. The possible values are:
 - **Enabled** - This parameter indicates that the port is permitted to use flow control.
 - **Disabled** - This parameter indicates that the port is not permitted to use flow control.
- **Jumbo:** This parameter indicates whether or not jumbo frames can be accepted by the switch. You may want to activate jumbo frames when your switch will transmit video and audio files. The possible values are:
 - **Enabled** -This parameter indicates the switch is permitted to accept jumbo frames.
 - **Disabled** -This parameter indicates the switch is not permitted to accept jumbo frames.

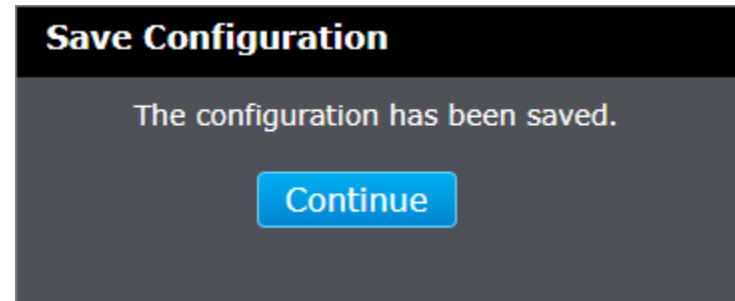
Note: When QoS is enabled, the Jumbo frame parameter cannot be enabled.

NOTE: The configured settings are only applied to the switch's **temporary** memory and will be lost upon the next power-cycle. Please follow these next steps to save the configurations to the switch's NV-RAM to ensure the settings will remain throughout power-cycles and reboots:

1. From the menu on the left: click on **Save**, then click the blue button **Save Settings to Flash**.



2. Click **Continue** to return to the Web Configuration of your switch.



Physical Interface Table					
Port	Link Status	Admin. Status	Mode	Flow Ctrl	Action
All	-	Disabled ▾	Auto ▾	Disabled ▾	Apply
1	Up	Enabled ▾	Auto (1000F) ▾	Disabled ▾	Apply
2	Down	Enabled ▾	Auto ▾	Disabled ▾	Apply
3	Down	Enabled ▾	Auto ▾	Disabled ▾	Apply
4	Down	Enabled ▾	Auto ▾	Disabled ▾	Apply
5	Down	Enabled ▾	Auto ▾	Disabled ▾	Apply
6	Down	Enabled ▾	Auto ▾	Disabled ▾	Apply
7	Down	Enabled ▾	Auto ▾	Disabled ▾	Apply
8	Down	Enabled ▾	Auto ▾	Disabled ▾	Apply

Jumbo Frame	
Jumbo Frame:	Disabled ▾
Apply	

Spanning Tree

Spanning Tree Global Settings

Network > Spanning Tree > Protocol

Spanning Tree Protocol (STP) provides network topology for any arrangement of bridges/switches. STP also provides a single path between end stations on a network, eliminating loops. Loops occur when alternate routes exist between hosts. Loops in an extended network can cause bridges to forward traffic indefinitely, resulting in increased traffic and reducing network efficiency.

1. Log into your switch management page (see "[Access your switch management page](#)" on page 7).
2. Click on **Network**, click on **Spanning Tree**, and click on **Protocol**.
3. Review the settings. Click **Apply** to save changes.
 - **Spanning Tree State:** Select the STP state on the device. The possible field values are:
 - **Disable** – Disables STP on the device. This is the default value.
 - **Enable** – Enables STP on the device.
 - **Spanning Tree Mode:** Specifies the Spanning Tree Protocol (STP) mode to enable on the switch. The possible field values are:
 - **STP** – Enables STP 802.1d on the device.
 - **RSTP** – Enables Rapid STP 802.1w on the device. This is the default value.
 - **STP Traps:** You may set conditional triggers for automatically exporting logs upon:
 - **STP New Root Trap** – Triggers when a new STP root is created.
 - **STP Topology Change Trap** – Triggers when any change in the topology of the STP is detected.

Spanning Tree State	
Spanning Tree State:	Enabled ▾
<input type="button" value="Apply"/>	
Spanning Tree Mode	
Spanning Tree Mode:	STP ▾
<input type="button" value="Apply"/>	
STP Traps	
STP New Root Trap:	Disabled ▾
STP Topology Change Trap:	Disabled ▾
<input type="button" value="Apply"/>	

In addition, this section also displays the spanning tree root information.

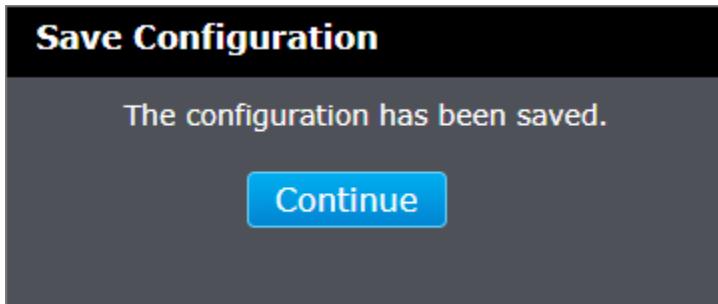
Root Bridge Information	
Root Bridge:	32768:80-26-89-3C-BF-F0
Root Cost:	0
Root Maximum Age:	20
Root Forward Delay:	15
Root Port:	0

NOTE: The configured settings are only applied to the switch's **temporary** memory and will be lost upon the next power-cycle. Please follow these next steps to save the configurations to the switch's NV-RAM to ensure the settings will remain throughout power-cycles and reboots:

1. From the menu on the left: click on **Save**, then click the blue button **Save Settings to Flash**.



2. Click **Continue** to return to the Web Configuration of your switch.



Configure Spanning Tree Protocol port settings

Network > Spanning Tree > RSTP Port Settings

1. Log into your switch management page (see "[Access your switch management page](#)" on page 7).
2. Click on **Network**, click on **Spanning Tree**, and click on **RSTP Port Settings**.

3. Review the settings. For each entry, click **Apply** to save changes.

- **Port** - Specifies the port number. The All value indicates ports 1 through 8 on the Switch. You cannot change this parameter. You can use the **All** row value in the **Port** column to apply the **Port Fast** setting across all ports.
- **Port Fast** – Select the type of network that this port is connected to and whether to enable spanning tree for the specified port.
 - **Network** – STP enabled and the port is connected to the main network.
 - **Disabled** – Disables STP on this port.
 - **Edge** – STP enabled and indicates if a port is connected to an edge device in the network topology or not. Edge ports cannot create loops, however an edge port can lose edge port status if a topology change creates a potential for a loop. An edge port normally should not receive BPDU packets. If a BPDU packet is received, it automatically loses edge port status.

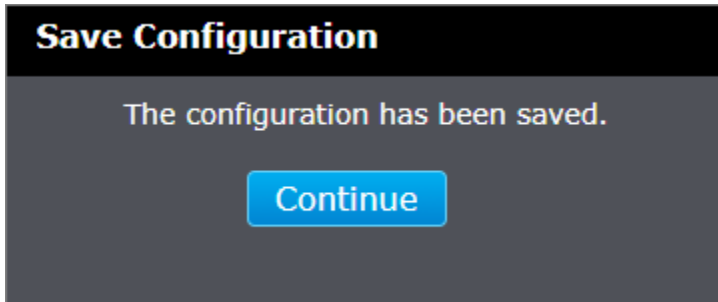
Port Settings			
Port	Port Fast	State	Action
All	Network ▼	-	Apply
1	Disabled ▼	Forwarding	Apply
2	Network ▼	Link down	Apply
3	Network ▼	Link down	Apply
4	Network ▼	Link down	Apply
5	Network ▼	Link down	Apply
6	Network ▼	Link down	Apply
7	Network ▼	Link down	Apply
8	Network ▼	Link down	Apply

NOTE: The configured settings are only applied to the switch's **temporary** memory and will be lost upon the next power-cycle. Please follow these next steps to save the configurations to the switch's NV-RAM to ensure the settings will remain throughout power-cycles and reboots:

1. From the menu on the left: click on **Save**, then click the blue button **Save Settings to Flash**.



2. Click **Continue** to return to the Web Configuration of your switch.



Trunk

Configure port trunk settings (Trunk/Link Aggregation)

Network > Trunk

The trunking function enables the cascading of two or more ports for a combined larger total bandwidth. Up to 2 trunk groups may be created, each supporting up to 4 ports. Select the ports to be trunked together, and click Apply to activate the selected trunking groups.

Important Note: Do not connect the cables of a port trunk to the ports on the switch until you have configured the ports on both the switch and the end nodes. Connecting the cables prior to configuring the ports can create loops in your network topology. Loops can result in broadcast storms which can severely limited the effective bandwidth of your network.

1. Log into your switch management page (see "[Access your switch management page](#)" on page 7).
2. Click on **Network** then click on **Trunk**.
3. Review the settings. For each trunk group, click **Apply** to save changes.
 - **Link Aggregation Global Settings:** To enable **Trunking/Link Aggregation**, select **Enable**. Otherwise, trunk settings will remain in its default state (**Disabled**).



- For each Trunk ID/Group, check the port numbers to add for each trunk group.

Channel Group Information					
ID 1:	1	2	3	4	Apply
	<input type="checkbox"/>	<input type="checkbox"/>	<input type="checkbox"/>	<input type="checkbox"/>	
ID 2:	5	6	7	8	Apply
	<input type="checkbox"/>	<input type="checkbox"/>	<input type="checkbox"/>	<input type="checkbox"/>	

- **Link Aggregation List** lists the current active trunking groups and their respective ports. Clicking **Delete** removes the group.

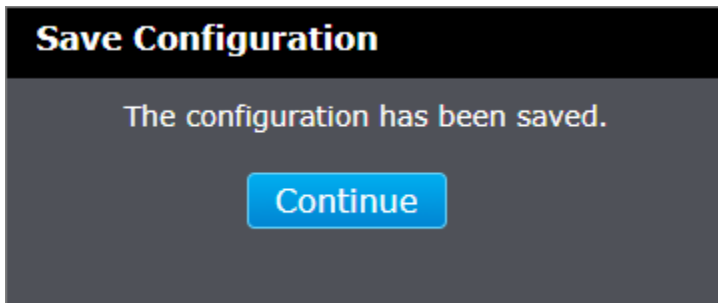
ID	Port	Delete
1		Delete
2		Delete

NOTE: The configured settings are only applied to the switch's **temporary** memory and will be lost upon the next power-cycle. Please follow these next steps to save the configurations to the switch's NV-RAM to ensure the settings will remain throughout power-cycles and reboots:

1. From the menu on the left: click on **Save**, then click the blue button **Save Settings to Flash**.



2. Click **Continue** to return to the Web Configuration of your switch.



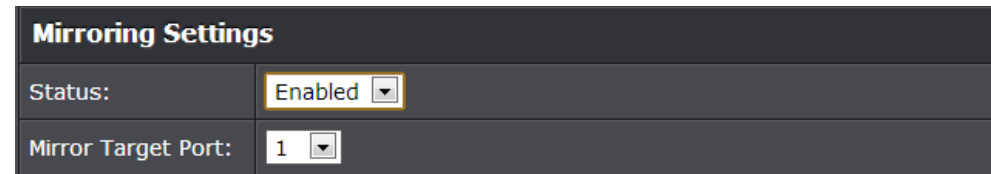
Mirroring

Configure port mirror settings

Network > Mirroring

Port mirroring allows you to monitor the ingress and egress traffic on a port by having the traffic copied to another port where a computer or device can be set up to capture the data for monitoring and troubleshooting purposes.

1. Log into your switch management page (see "[Access your switch management page](#)" on page 7).
2. Click on **Network**, and click on **Mirroring**.
3. Review the settings. Click **Apply** to save changes.
 - **Status** – Click the drop-down and list and select one of the following options:
 - **Enable** - This parameter activates the Port Mirroring feature and the rest of the configuration parameters become active on the page.
 - **Disable** - This parameter de-activates the Port Mirroring feature and the rest of the configuration parameters become inactive on the page.
 - **Mirror Target Port** – Click the drop-down and list and select the port to send the copied ingress/egress packets/data. (e.g. Computer or device with packet capture or data analysis program.)



Check the port to monitor or copy information from. (Source)

To copy data received on a specific port, select **Ingress** as the **Frame** Type and check the port number(s) under the section or you could click **All** to copy data received on all ports.

To copy data transmitted on specific port, select **Egress** as the **Frame** Type and check the port number(s) under the section or you could click **All** to copy data received on all ports.

To copy both transmitted and received data, select **Ingress/Egress** as the **Frame Type** and check the port number(s) under the section or you could click **All** to copy data received on all ports.

Mirroring Port Settings								
Frame Type:	Ingress/Egress ▾							
Ingress/Egress Port :								
	1	2	3	4	5	6	7	8
All	<input type="checkbox"/>	<input type="checkbox"/>	<input type="checkbox"/>	<input type="checkbox"/>	<input type="checkbox"/>	<input type="checkbox"/>	<input type="checkbox"/>	<input type="checkbox"/>

NOTE: The configured settings are only applied to the switch's **temporary** memory and will be lost upon the next power-cycle. Please follow these next steps to save the configurations to the switch's NV-RAM to ensure the settings will remain throughout power-cycles and reboots:

- From the menu on the left: click on **Save**, then click the blue button **Save Settings to Flash**.

Switch Info	Save Settings to Flash
System	Note: The switch will stop responding while saving the current configuration to flash.
Network	Save Settings to Flash
QoS	
Tools	
Save	

- Click **Continue** to return to the Web Configuration of your switch.

Save Configuration

The configuration has been saved.

[Continue](#)

Loopback Detection

Enable loopback detection

Network > Loopback Detection

The loopback detection feature allows the switch to detect and prevent disruption from loops that occur on uplink or downlink switches directly connected to your switch.

- Log into your switch management page (see "[Access your switch management page](#)" on page 7).
- Click on **Network** and click on **Loopback Detection**.
- Review the settings.
 - Loopback Detection Status** – Select **Enabled** to enable the loopback detection feature. Select **Disabled** to disable the loopback detection feature.
 - Interval** – Defines the interval your switch will check for loops.
 - Recover Time** – Defines the time period when connectivity will be restored to a port where a loop was previously detected and blocked.

Click **Apply** to save changes.

Loopback Detection Settings	
Loopback Detection Status:	Enabled ▾
Loopback Detection Time Settings	
Interval:	2 <input type="text"/> sec(1-32767)
Recover Time:	60 <input type="text"/> sec(0 or 60-1000000, 0 is Disabled)

In the Loopback Detection table, select one of the **Loopback Detection Status** choices from the pull down menu:

- **Enabled:** This selection enables the Loopback Detection feature for each port. This state must be enabled along with the **Status** field at the top of the page before this feature can be active on the selected port.
- **Disabled:** This selection disables the Loopback Detection feature on the selected port.

Next to each entry modified, under the **Action** column, click **Apply** to save the changes.

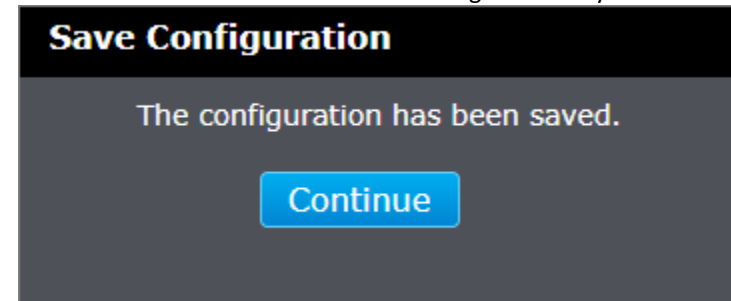
Loopback Detection Table			
Port	Loopback Detection Status	Loop Status	Action
All	Disabled ▾	-	Apply
1	Enabled ▾	Normal	Apply
2	Enabled ▾	Normal	Apply
3	Enabled ▾	Normal	Apply
4	Enabled ▾	Normal	Apply
5	Enabled ▾	Normal	Apply

NOTE: The configured settings are only applied to the switch's **temporary** memory and will be lost upon the next power-cycle. Please follow these next steps to save the configurations to the switch's NV-RAM to ensure the settings will remain throughout power-cycles and reboots:

1. From the menu on the left: click on **Save**, then click the blue button **Save Settings to Flash**.



2. Click **Continue** to return to the Web Configuration of your switch.



Static Unicast

Add static unicast entries to the switch

Network > Static Unicast

In this section, you can add static unicast entries to the switch configuration.

1. Log into your switch management page (see "[Access your switch management page](#)" on page 7).
2. Click on **Network** and click on **Static Unicast**.
3. Review the settings.
 - **802.1Q VLAN** – Enter the VLAN ID where the MAC address will reside.
Note: By default, all switch ports are part of the default VLAN, VLAN ID 1.
 - **MAC Address** – Enter the MAC address of the device to add.
 - **Port Member** – Select the port where the MAC address will reside.

Click **Apply** to add the Static Unicast entry to the list.

Static Unicast Address Settings								
802.1Q VLAN:	<input type="text"/>	(1-4094)						
MAC Address:	<input type="text"/>	<input type="text"/>	<input type="text"/>	<input type="text"/>	<input type="text"/>	<input type="text"/>	<input type="text"/>	<input type="text"/>
Port Member Settings								
	1	2	3	4	5	6	7	8
	<input type="radio"/>	<input type="radio"/>	<input type="radio"/>	<input type="radio"/>	<input type="radio"/>	<input type="radio"/>	<input type="radio"/>	<input type="radio"/>

In the list, you can click **Modify** to modify an entry or click **Delete** or delete the entry. You can also click **Delete All** to delete all the entries in the list. If the entries span multiple pages, you can navigate page number in the **Page** field and click **Go** or you can click **First**, **Previous**, **Next**, and **Last Page** to navigate the pages.

Static Unicast Table (Free entries:32, Total entries:0)				Delete All
VLAN	MAC Address	Port Member	Action	
<< 802.1Q VLAN Static Unicast Address Table is empty >>				
Page 0/0	First Page	Previous Page	Next Page	Last Page
	Page <input type="text"/>	GO		

NOTE: The configured settings are only applied to the switch's **temporary** memory and will be lost upon the next power-cycle. Please follow these next steps to save the configurations to the switch's NV-RAM to ensure the settings will remain throughout power-cycles and reboots:

1. From the menu on the left: click on **Save**, then click the blue button **Save Settings to Flash**.

Switch Info	Save Settings to Flash
System	Note:The switch will stop responding while saving the current configuration to flash.
Network	<input type="button" value="Save Settings to Flash"/>
QoS	
Tools	
Save	

2. Click **Continue** to return to the Web Configuration of your switch.

Save Configuration
The configuration has been saved.
<input type="button" value="Continue"/>

Static Multicast

Add static multicast entries to the switch

Network > Static Multicast

In this section, you can add static multicast entries to the switch configuration.

1. Log into your switch management page (see “[Access your switch management page](#)” on page 7).
2. Click on **Network** and click on **Static Multicast**.
3. Review the settings.
 - **802.1Q VLAN** – Enter the VLAN ID where the multicast group MAC address will reside.
Note: By default, all switch ports are part of the default VLAN, VLAN ID 1.
 - **MAC Address** – Enter the multicast group MAC address.
 - **Group Member** – Check the port(s) where the MAC address will reside.
*Note: You can click **All** to select all ports.*

Click **Apply** to add the Static Multicast Group entry to the list.

Static Multicast Address Settings								
802.1Q VLAN:	<input type="text"/> (1-4094)							
Group MAC Address:	<input type="text"/> : <input type="text"/> : <input type="text"/> : <input type="text"/> : <input type="text"/> : <input type="text"/>							
Group Member								
	1	2	3	4	5	6	7	8
<input type="button" value="All"/>	<input type="checkbox"/>	<input type="checkbox"/>	<input type="checkbox"/>	<input type="checkbox"/>	<input type="checkbox"/>	<input type="checkbox"/>	<input type="checkbox"/>	<input type="checkbox"/>

In the list, you can click **Modify** to modify an entry or click **Delete** or delete the entry. If the entries span multiple pages, you can navigate page number in the **Page** field and click **Go** or you can click **First, Previous, Next, and Last Page** to navigate the pages.

Static Multicast Table (Free entries:32, Total entries:0) <input type="button" value="Delete All"/>			
VLAN ID	MAC Address	Group Members	Action
<< Static multicast address table is empty >>			
Page 0/0	<input type="button" value="First Page"/>	<input type="button" value="Previous Page"/>	<input type="button" value="Next Page"/> <input type="button" value="Last Page"/> Page <input type="text" value=""/> <input type="button" value="GO"/>

NOTE: The configured settings are only applied to the switch's **temporary** memory and will be lost upon the next power-cycle. Please follow these next steps to save the configurations to the switch's **NV-RAM** to ensure the settings will remain throughout power-cycles and reboots:

1. From the menu on the left: click on **Save**, then click the blue button **Save Settings to Flash**.

Switch Info	Save Settings to Flash
System	Note:The switch will stop responding while saving the current configuration to flash.
Network	<input type="button" value="Save Settings to Flash"/>
QoS	
Tools	
<input type="button" value="Save"/>	

2. Click **Continue** to return to the Web Configuration of your switch.

Save Configuration

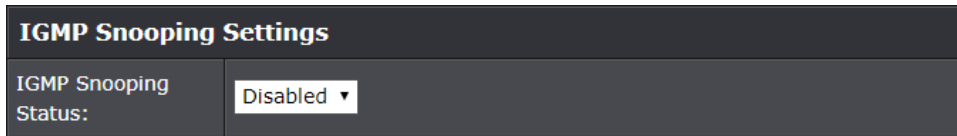
The configuration has been saved.

IGMP Snooping

Configure IGMP Snooping Settings

Network > IGMP Snooping > Settings

- Log into your switch management page (see "[Access your switch management page](#)" on page 7).
- Click on **Network**, click on **IGMP Snooping**, and click on **Settings**.
- Review the settings. Click **Apply** to save the settings.
 - IGMP Snooping Status** – Click the drop-down list and select **Enabled** to enable the IGMP snooping feature or **Disabled** to disable the feature.
 - Note:** Internet Group Management Protocol snooping allows the switch to recognize IGMP queries and reports sent between network stations or devices and an IGMP host. When enabled for IGMP snooping, the switch can add or remove a port to a specific device based on IGMP messages passing through the switch.

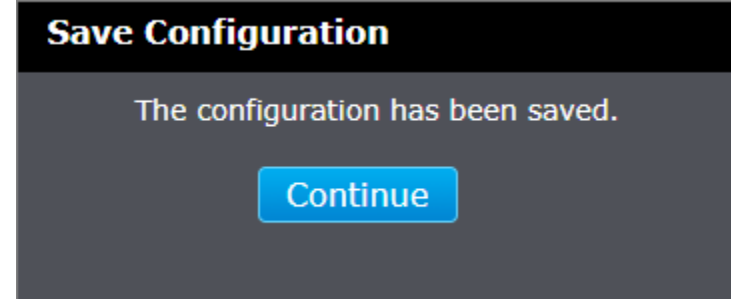


NOTE: The configured settings are only applied to the switch's **temporary** memory and will be lost upon the next power-cycle. Please follow these next steps to save the configurations to the switch's NV-RAM to ensure the settings will remain throughout power-cycles and reboots:

- From the menu on the left: click on **Save**, then click the blue button **Save Settings to Flash**.



- Click **Continue** to return to the Web Configuration of your switch.

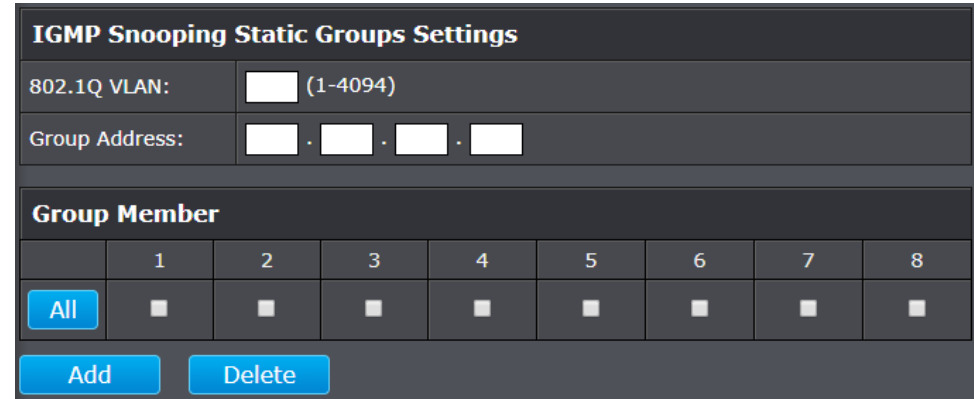


Configure IGMP Snooping Group Settings

Network > IGMP Snooping > Group Settings

- Log into your switch management page (see "[Access your switch management page](#)" on page 7).
- Click on **Network**, click on **IGMP Snooping**, and click on **Group Settings**.
- Review the settings. Click **Apply** to save the settings.

In the **IGMP Snooping Static Groups Settings** you may specify an **802.1Q VLAN** ID and a **Group Address** (IP Address) and the respective ports on the switch that you would like to place within the static group entry.



In the list, you can click **Delete** to delete the entry. If the entries span multiple pages, you can navigate page number in the **Page** field and click **Go** or you can click **First**, **Previous**, **Next**, and **Last Page** to navigate the pages.

IGMP Group Entries (Free entries:32, Total entries:0)				
Group ID	VLAN ID	Group Address	Member Ports	Delete
<< IGMP Snooping multicast address table is empty >>				
Page 0/0	First Page	Previous Page	Next Page	Last Page
		Page <input type="text"/>	GO	

IGMP Snooping Groups Table (Free entries:128, Total entries:0) Delete All				
Group ID	VLAN ID	Group Address	Member Ports	Delete
<< IGMP Snooping multicast address table is empty >>				
Page 0/0	First Page	Previous Page	Next Page	Last Page
		Page <input type="text"/>	GO	

NOTE: The configured settings are only applied to the switch's **temporary** memory and will be lost upon the next power-cycle. Please follow these next steps to save the configurations to the switch's NV-RAM to ensure the settings will remain throughout power-cycles and reboots:

- From the menu on the left: click on **Save**, then click the blue button **Save Settings to Flash**.

Switch Info	<h3>Save Settings to Flash</h3> <p>Note: The switch will stop responding while saving the current configuration to flash.</p> <div style="border: 1px solid red; padding: 5px; display: inline-block;">Save Settings to Flash</div>
System	
Network	
QoS	
Tools	
Save	

- Click **Continue** to return to the Web Configuration of your switch.

Save Configuration

The configuration has been saved.

Continue

Bandwidth Control

Configure Storm Control

Network > Bandwidth Control > Storm Control

This section allows you to configure the broadcast, multicast, and unknown unicast (also known as DLF or Destination Lookup Failure) storm settings for the switch.

- Log into your switch management page (see "[Access your switch management page](#)" on page 7).
- Click on **Network**, click on **Bandwidth Control**, and click on **Storm Control**.
- Review the settings for each port. Click **Apply** to save the settings.
 - Storm Control Status** – Select **Enabled** to enable this feature, and **Disable** to disable it.
 - Storm Control** – Select one of the options to enable the feature:
 - Multicast & Broadcast & Unknown Unicast** – Select this option from the drop down to enable storm control for all 3 types of storms.
 - Multicast & Broadcast**– Select this option from the drop down to enable storm control for both multicast and broadcast storms.
 - Broadcast Only**– Select this option from the drop down to only enable broadcast storm control.
 - Threshold** – Enter the kbps (kilobits per second) threshold.

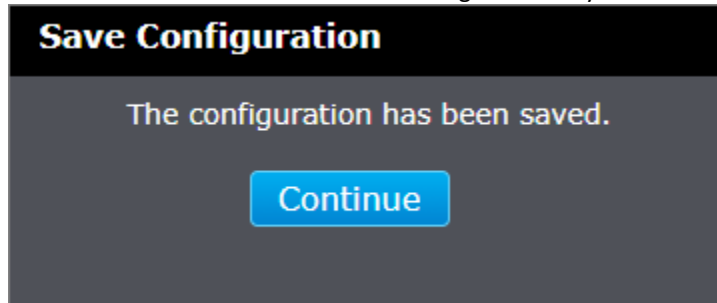
Storm Control Settings	
Storm Control Status:	Enabled ▼
Storm Control:	Multicast & Broadcast & Unknown Unicast ▼
Threshold:	<input type="text" value="1000000"/> kbps.(8-1000000)

NOTE: The configured settings are only applied to the switch's **temporary** memory and will be lost upon the next power-cycle. Please follow these next steps to save the configurations to the switch's NV-RAM to ensure the settings will remain throughout power-cycles and reboots:

- From the menu on the left: click on **Save**, then click the blue button **Save Settings to Flash**.



- Click **Continue** to return to the Web Configuration of your switch.



Set Ingress Rate Limiting

Network > Bandwidth Control > Ingress Rate Limiting

This section allows you to set the ingress (receive) rate for each switch port.

- Log into your switch management page (see "[Access your switch management page](#)" on page 7).
- Click on **Network**, click on **Bandwidth Control**, and click on **Ingress Rate Limiting**.
- Review the settings for each port. Click **Apply** to save the settings.
 - Bandwidth** – Select the bandwidth limit in bits per second from the dropdown menu.

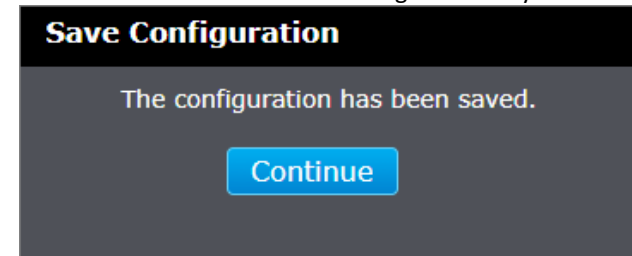
Port	Bandwidth	Action
All	No Limit ▾	Apply
1	No Limit ▾	Apply
2	No Limit ▾	Apply
3	No Limit ▾	Apply
4	No Limit ▾	Apply
5	No Limit ▾	Apply

NOTE: The configured settings are only applied to the switch's **temporary** memory and will be lost upon the next power-cycle. Please follow these next steps to save the configurations to the switch's NV-RAM to ensure the settings will remain throughout power-cycles and reboots:

- From the menu on the left: click on **Save**, then click the blue button **Save Settings to Flash**.



- Click **Continue** to return to the Web Configuration of your switch.



Set Egress Rate Limiting

Network > Bandwidth Control > Egress Rate Limiting

This section allows you to set the egress (transmit) rate for each switch port.

1. Log into your switch management page (see "[Access your switch management page](#)" on page 7).
2. Click on **Network**, click on **Bandwidth Control**, and click on **Egress Rate Limiting**.
3. Review the settings for each port. Click **Apply** to save the settings.
 - **Bandwidth** – Select the bandwidth limit in bits per second from the dropdown menu.

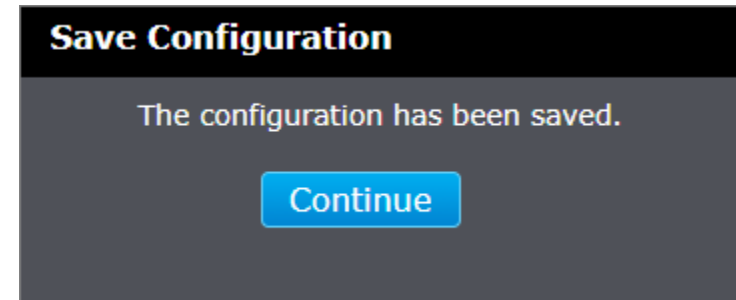
Egress Rate Limiting Settings		
Port	Bandwidth	Action
All	No Limit ▾	Apply
1	No Limit ▾	Apply
2	No Limit ▾	Apply
3	No Limit ▾	Apply
4	No Limit ▾	Apply
5	No Limit ▾	Apply

NOTE: The configured settings are only applied to the switch's **temporary** memory and will be lost upon the next power-cycle. Please follow these next steps to save the configurations to the switch's NV-RAM to ensure the settings will remain throughout power-cycles and reboots:

1. From the menu on the left: click on **Save**, then click the blue button **Save Settings to Flash**.



2. Click **Continue** to return to the Web Configuration of your switch.



VLAN

Add, modify, and remove VLANs

Network > VLAN > Tagged

A VLAN is a group of ports that can be anywhere in the network, but communicate as though they were in the same area.

VLANs can be easily organized to reflect department groups (such as R&D, Marketing), usage groups (such as e-mail), or multicast groups (multimedia applications such as video conferencing), and therefore help to simplify network management by allowing users to move devices to a new VLAN without having to change any physical connections.

1. Log into your switch management page (see "[Access your switch management page](#)" on page 7).
2. Click on **Network**, click on **VLAN**, and click on **Tagged**.
3. Review the settings.
 - **VLAN ID** – Enter the VLAN ID for the new VLAN.
 - **VLAN Name** – Enter the VLAN name.

Tagged VLAN Settings	
VLAN ID:	<input type="text"/> (2-4094)
VLAN Name:	<input type="text"/> (Name should be less than 10 characters)

In the sections **Static Tagged**, **Static Untagged**, and **Not Member**, you can add the type of VLAN ports to add to the new VLAN (Tagged or Untagged) and assign ports that are not members (Forbidden) of the new VLAN.

Tagged/Untagged/Not Member VLAN Ports

On a port, the tag information within a frame is examined when it is received to determine if the frame is qualified as a member of a specific tagged VLAN. If it is, it is eligible to be switched to other member ports of the same VLAN. If it is determined that the frame's tag does not conform to the tagged VLAN, the frame is discarded.

Since these VLAN ports are VLAN aware and able to read VLAN VID tagged information on a frame and forward to the appropriate VLAN, typically tagged VLAN ports are used for uplink and downlink to other switches to carry and forward traffic for multiple VLANs across multiple switches. Tagged VLAN ports can be included as members for multiple VLANs. Computers and other edge devices are not typically connected to tagged VLAN ports unless the network interface on these device can be enabled to be VLAN aware.

Select the tagged VLAN ports to add to the new VLAN.

Static Tagged								
	1	2	3	4	5	6	7	8
All	<input type="radio"/>	<input type="radio"/>	<input type="radio"/>	<input type="radio"/>	<input type="radio"/>	<input type="radio"/>	<input type="radio"/>	<input type="radio"/>

Untagged VLAN ports are used to connect edge devices (VLAN unaware) such as computers, laptops, and printers to a specified VLAN. It is required to modify the Port VID settings accordingly for untagged VLAN ports under Bridge > VLAN > Port Settings. (e.g. If the VID for the VLAN is 2, the PVID should also be set to 2)

Select the untagged VLAN ports to add to the new VLAN.

Static Untagged								
	1	2	3	4	5	6	7	8
All	<input type="radio"/>	<input type="radio"/>	<input type="radio"/>	<input type="radio"/>	<input type="radio"/>	<input type="radio"/>	<input type="radio"/>	<input type="radio"/>

Select the not member ports to restrict from the new VLAN.

Not Member								
	1	2	3	4	5	6	7	8
All	<input type="radio"/>	<input type="radio"/>	<input type="radio"/>	<input type="radio"/>	<input type="radio"/>	<input type="radio"/>	<input type="radio"/>	<input type="radio"/>

Click **Apply** to save the new VLAN to the table.

Management VLAN – Select the **VLAN ID** from any user created VLANs for the management VLAN and additionally displays the **VLAN Name**.

Note: By default, the default VLAN VID 1 is set as the Management VLAN.

Management VLAN	
VLAN ID:	1 ▾
VLAN Name:	

In this list, you can click **Modify** to modify an entry or click **Delete** or delete the entry. If the entries span multiple pages, you can navigate page number in the **Page** field and click **Go** or you can click **First, Previous, Next, and Last Page** to navigate the pages.

Note: The default VLAN VID1 cannot be removed.

Tagged VLAN Table						
VLAN ID	Name	Port Type	Management	Untagged VLAN Ports	Tagged VLAN Ports	Action
1		Permanent	Enabled	1-8		Modify

Note: If a port does not belong to any VLAN, its PVID will be changed to default VLAN ID.

Page 1/1 [First Page](#) [Previous Page](#) [Next Page](#) [Last Page](#) Page [GO](#)

NOTE: The configured settings are only applied to the switch's **temporary** memory and will be lost upon the next power-cycle. Please follow these next steps to save the configurations to the switch's NV-RAM to ensure the settings will remain throughout power-cycles and reboots:

- From the menu on the left: click on **Save**, then click the blue button **Save Settings to Flash**.

Switch Info	Save Settings to Flash Note: The switch will stop responding while saving the current configuration to flash. Save Settings to Flash
System	
Network	
QoS	
Tools	
Save	

- Click **Continue** to return to the Web Configuration of your switch.

Save Configuration

The configuration has been saved.

[Continue](#)

Configure VLAN Port Settings

Network > VLAN > Port

In this section, you can modify the port VID value.

- Log into your switch management page (see "[Access your switch management page](#)" on page 7).
- Click on **Bridge**, click on **VLAN**, and click on **Port Settings**.
- Review the settings for each port. Click **Apply** to save settings.
 - PVID** – Enter the port VLAN ID. Modifying the value in the **All** row will apply the same value for all ports. *Note: Required for untagged VLAN ports.*

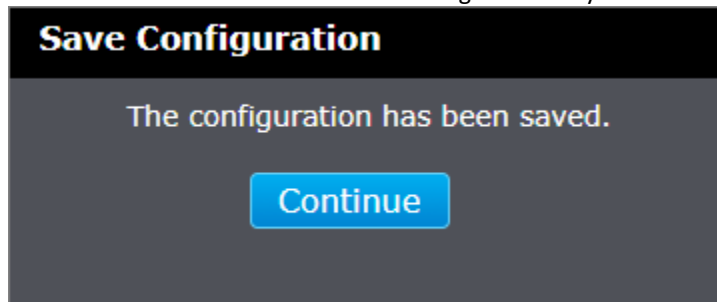
Port	PVID	Action
All	<input type="text" value="1"/>	Apply
1	<input type="text" value="1"/>	Apply
2	<input type="text" value="1"/>	Apply
3	<input type="text" value="1"/>	Apply
4	<input type="text" value="1"/>	Apply
5	<input type="text" value="1"/>	Apply

NOTE: The configured settings are only applied to the switch's **temporary** memory and will be lost upon the next power-cycle. Please follow these next steps to save the configurations to the switch's NV-RAM to ensure the settings will remain throughout power-cycles and reboots:

1. From the menu on the left: click on **Save**, then click the blue button **Save Settings to Flash**.



2. Click **Continue** to return to the Web Configuration of your switch.



Configure the VLAN forwarding Table

Network > VLAN > Forwarding

This section allows you to configure your switch to standard 802.1Q VLAN mode (IVL) or Asymmetric VLAN mode (SVL). Asymmetric VLAN allows the configuration of overlapping untagged VLAN ports in order to create VLAN groups. It is recommended to use the standard 802.1Q VLAN mode when possible.

Please note the following when switching between forwarding table modes:

- FDB (Forwarding Database) will be cleared.
- Static Unicast Address entries will be cleared.

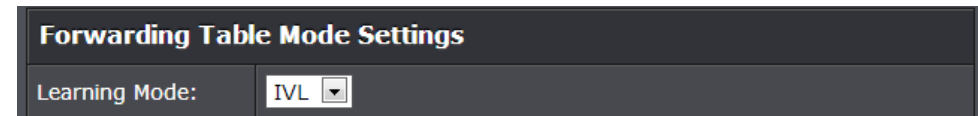
- Static Multicast Address entries will be cleared.
- 802.1X authenticated records will be cleared.
- IGMP Snooping multicast group addresses will be cleared.
- When using SVL mode, Voice VLAN will not be supported.
- When using SVL mode, the VID field on 802.1Q-VLAN mode will be displayed as "N/A".

1. Log into your switch management page (see "[Access your switch management page](#)") on page 7).

2. Click on **Network**, click on **VLAN**, and click on **Forwarding**.

3. Click the learning mode drop-down list to select the forwarding table mode and click **Apply** to save settings.

- **IVL** – Independent VLAN Learning (Default)
- **SVL** – Shared VLAN Learning (also known as asymmetric VLAN)

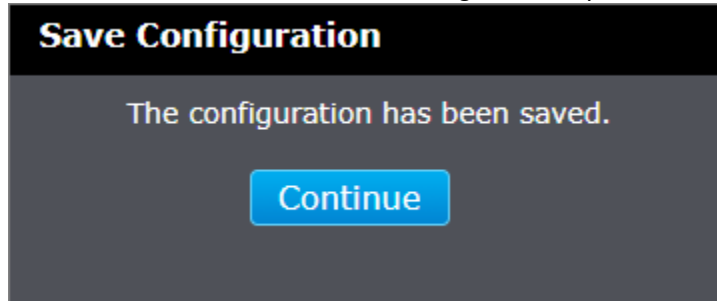


NOTE: The configured settings are only applied to the switch's **temporary** memory and will be lost upon the next power-cycle. Please follow these next steps to save the configurations to the switch's NV-RAM to ensure the settings will remain throughout power-cycles and reboots:

1. From the menu on the left: click on **Save**, then click the blue button **Save Settings to Flash**.



- Click **Continue** to return to the Web Configuration of your switch.

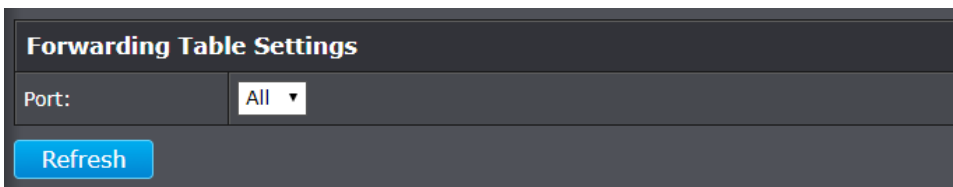


View the switch VLAN dynamic forwarding table

Network > VLAN > Forwarding Table

This section allows you to view the VLAN forwarding table with dynamically generated forwarding table entries as devices more devices are connected to your switch.

- Log into your switch management page (see "[Access your switch management page](#)" on page 7).
- Click on **Network**, click on **VLAN**, and click on **Forwarding Table**.
- By default, forwarding entries for all ports are listed. You can click the **Port** drop-down list to select a specific port to view only the forwarding entries for the selected port. Click **Refresh** after changing a port to update the entries in the Forwarding Table.



If the entries span multiple pages, you can navigate page number in the **Page** field and click **Go** or you can click **First**, **Previous**, **Next**, and **Last Page** to navigate the pages.

Forwarding Table				
ID	VID	Port	MAC Address	Type
1	1	1	EC:0E:C4:12:B9:C1	Dynamic
2	1	1	60:F8:1D:66:B7:F3	Dynamic
3	1	1	00:26:C6:2C:68:40	Dynamic
4	1	1	D8:EB:97:EF:32:6A	Dynamic

Page 1/1 [First Page](#) [Previous Page](#) [Next Page](#) [Last Page](#) Page [GO](#)

Create a private VLAN

Network > VLAN > Private

The private VLAN feature allows you to create a more secure VLAN that is completely isolated to its members and cannot communicate with other VLANs. A private VLAN partitions the Layer 2 broadcast domain of a VLAN into subdomains, allowing you to isolate the ports on the switch from each other. A subdomain consists of a primary VLAN and one or more secondary VLANs. All VLANs in a private VLAN domain share the same primary VLAN. The secondary VLAN ID differentiates one subdomain from another. The secondary VLANs may either be isolated VLANs or community VLANs. A host on an isolated VLAN can only communicate with the associated promiscuous port in its primary VLAN. Hosts on community VLANs can communicate among themselves and with their associated promiscuous port but not with ports in other community VLANs.

The following guidelines apply when configuring private VLANs: The default VLAN 1 cannot be a private VLAN. The management VLAN 4095 cannot be a private VLAN. The management port cannot be a member of a private VLAN. IGMP Snooping must be disabled on isolated VLANs. Each secondary port's (isolated port and community ports) PVID must match its corresponding secondary VLAN ID. Ports within a secondary VLAN cannot be members of other VLANs. All VLANs that make up the private VLAN must belong to the same Spanning Tree Group.

1. Log into your switch management page (see "[Access your switch management page](#)" on page 7).
2. Click on **Network**, click on **VLAN**, and click on **Private**.
3. To configure Private VLAN Settings, perform the following procedure:
 - Set the **Source Port** to one of the following choices from the pull-down menu: All, 01 – 8
 - Click on the **Forwarding Ports** ratio button that applies to your configuration.
 - Click **Add** to add the new entry, or **Delete** to delete the entry for the selected **Source Port**.

Private VLAN Port Select

Source Port:

Forwarding Ports:

	1	2	3	4	5	6	7	8
All	<input checked="" type="checkbox"/>	<input type="checkbox"/>	<input type="checkbox"/>	<input type="checkbox"/>	<input type="checkbox"/>	<input type="checkbox"/>	<input type="checkbox"/>	<input type="checkbox"/>

Private VLAN Port List

Port	Port Map
<< Private VLAN Port List table is empty >>	

NOTE: The configured settings are only applied to the switch's **temporary** memory and will be lost upon the next power-cycle. Please follow these next steps to save the configurations to the switch's NV-RAM to ensure the settings will remain throughout power-cycles and reboots:

1. From the menu on the left: click on **Save**, then click the blue button **Save Settings to Flash**.

2. Click **Continue** to return to the Web Configuration of your switch.

Voice VLAN

Configuring Voice VLANs

Network > Voice VLAN

This chapter contains a description of the Switch's Voice VLAN feature and the procedures to create, modify, and delete a voice VLAN configuration.

The Voice VLAN feature is specifically designed to maintain high quality, uninterrupted voice traffic through the switch. When talking on a voice over IP phone, a user expects to have no interruptions in the conversation and excellent voice quality. The Voice VLAN feature can be configured to meet these requirements.

CoS with Voice VLAN

The Voice VLAN CoS parameter maintains the voice quality between the ingress and egress ports of the switch. CoS must be enabled for the Voice VLAN CoS priority to take effect. The CoS priority level that you config is applied to voice traffic on all ports of the voice VLAN. Normally, most (non-Voice) Ethernet traffic transverses the switch through lower order egress queues. To avoid delays and interruptions in the voice data flow, the CoS priority level assigned to the voice VLAN should be mapped to a higher order queue and the scheduling algorithm should be set to Strict Priority. These settings ensure that the voice data packets are processed before other types of data so that the voice quality is maintained as the voice data passes through the switch.

Organization Unique Identifier (OUI)

Each IP phone manufacturer can be identified by one or more Organization Unique Identifiers (OUIs). An OUI is three bytes long and is usually expressed in hexadecimal format. It is imbedded into the first part of each MAC address of an Ethernet network device. You can find the OUI of an IP phone in the first three complete bytes of its MAC address.

Typically, you will find that all of the IP phones you are installing have the same OUI in common. The switch identifies a voice data packet by comparing the OUI information in the packet's source MAC address with an OUI table that you configure when you initially set up the voice VLAN. This is important when the Auto-Detection feature for a port and is a dynamic voice VLAN port.

When you are configuring the voice VLAN parameters, you must enter the complete MAC address of at least one of your IP phones. An "OUI Mask" is automatically generated and applied by the Web Management Utility software to yield the

manufacturer's OUI. If the OUI of the remaining phones from that manufacturer is the same, then no other IP phone MAC addresses need to be entered into the configuration.

However, it is possible that you can find more than one OUI from the same manufacturer among the IP phones you are installing. It is also possible that your IP phones are from two or more different manufacturers in which case you will find different OUIs for each manufacturer. If you identify more than one OUI among the IP phones being installed, then one MAC address representing each individual OUI must be configured in the voice VLAN. You can enter a total of 13 OUIs.

Dynamic Auto-Detection vs Static Ports

Note: *This switch only supports Auto-Detection for simplicity purposes.*

Prior to configuring the voice VLAN, you must configure a tagged VLAN which is the basis for the voice VLAN configuration. The VLAN must be configured with one or more tagged or untagged ports that will serve as the voice VLAN uplink/downlink. By default, a tagged or untagged port is a static member of a tagged VLAN. The ports that you choose to configure as dynamic Auto-Detection ports must be connected directly to an IP phone. When you initially define the ports of a tagged VLAN for your voice VLAN configuration, they must be configured as a "Not Member" ports. The "Not Member" ports are eligible to dynamically join the voice VLAN when voice data is detected with a predefined OUI in the source MAC address. The port will leave the voice VLAN after a specified timeout period. This port behavior is configured with the voice VLAN Auto-Detection feature.

For the Auto-Detection feature to function, your IP phone(s) must be capable of generating 802.1Q packets with imbedded VLAN ID tags. You must manually configure your IP phone(s) for the same VLAN ID as the switch's voice VLAN ID. When voice data is detected on one of the "Not Member" ports, the packets from the IP phone will contain the voice VLAN ID so they are switched within the switch's voice VLAN.

One or more ports in your voice VLAN must be configured as Static tagged or untagged members. Static VLAN members are permanent member ports of the voice VLAN and there is no dependency on the configuration of the devices connected to the ports. These ports might be connected to other voice VLAN network nodes such as other Ethernet switches, a telephone switch, or a DHCP server. The voice VLAN Auto-Detection feature cannot be enabled on Static tagged or tagged ports.

Note: *Any Static tagged members of the voice VLAN are required to have the port VLAN ID (PVID) configured to be the same as the voice VLAN ID. This insures that all untagged packets entering the port are switched within the voice VLAN as the voice data passes through the switch.*

If the IP phone(s) that you are installing cannot be configured with a VLAN ID, then the switch ports should be configured as Static tagged ports within the voice VLAN.

Note: Link Layer Discovery Protocol for Media Endpoint Devices (LLDP- MED) is not supported on the switch. Each IP phone that is VLAN aware should be manually configured for the VLAN ID that matches your voice VLAN ID. Each of the voice VLAN ports connected to an IP phone should be configured as "Not Member" ports of the tagged VLAN.

Create a Voice VLAN

Network > Voice VLAN > Settings

Note: Prior to configuring your voice VLAN, you must first configure a tagged VLAN. This VLAN will be used as a basis for your voice VLAN.

1. Log into your switch management page (see "[Access your switch management page](#)" on page 7).
2. Click on **Network**, click on **Voice VLAN**, and click on **Settings**.
3. Review the settings.

Use the following procedure to configure voice VLAN:

- From the **Voice VLAN** field at the top of the page, select one of the following radio button choices:
 - **Enable** - The voice VLAN feature is active. The other parameter fields in the voice VLAN Global Settings section become active and are eligible for data to be entered.
 - **Disable** - The voice VLAN feature is inactive. The other parameter fields in the voice VLAN Global Settings section become inactive and are greyed out so that data cannot be entered.
- In the Voice VLAN Global Settings section, enter the configuration information for the following parameters:
 - **VLAN ID** - This parameter is the tagged VLAN ID that has been configured in "Tagged VLAN Configuration". It is a pull-down menu showing the tagged VLAN IDs that have been defined.

- **CoS** - This parameter is CoS priority level assigned to the voice data packets received on each voice VLAN port. For the **COS** priority to be effective, QoS must be **Enabled**.

Click **Apply** to save the settings.

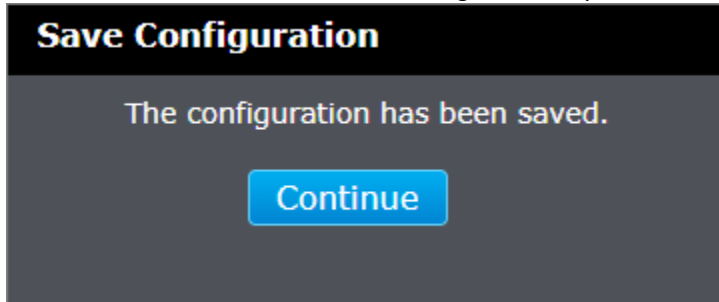
Voice VLAN Status	
Voice VLAN Status:	Enabled ▾
Note: Disabling will turn off the function and return all values to default.	
Voice VLAN Global Settings	
VLAN ID:	1 ▾
CoS:	High ▾

NOTE: The configured settings are only applied to the switch's **temporary** memory and will be lost upon the next power-cycle. Please follow these next steps to save the configurations to the switch's NV-RAM to ensure the settings will remain throughout power-cycles and reboots:

1. From the menu on the left: click on **Save**, then click the blue button **Save Settings to Flash**.

Switch Info	Save Settings to Flash
System	Note: The switch will stop responding while saving the current configuration to flash.
Network	Save Settings to Flash
QoS	
Tools	
Save	

- Click **Continue** to return to the Web Configuration of your switch.



Configure Voice VLAN OUI settings

Network > Voice VLAN > OUI

- Log into your switch management page (see "[Access your switch management page](#)" on page 7).
- Click on **Network**, **Voice VLAN**, and click on **OUI**.
- Review the settings.

- Select either a **Default OUI** (partially pre-filled fields for popular manufacturers of VOIP phones) or **User defined OUI** where you may enter a text description that helps you identify the manufacturer's OUI in the **User Defined OUI - Description** field.
- Enter the MAC address in the **Telephony OUI** field of one of the IP phones with the manufacturer's OUI.
- Click **Add**. The new OUI entry is displayed in the table at the bottom of the page.

Note: If you find more than one OUI among the IP phones you are installing, enter one MAC address that represents each individual OUI. You can enter a total of 5 OUIs.

Voice VLAN OUI Settings		
	Description	Telephony OUI
<input checked="" type="checkbox"/> Default OUI:	3COM	00 : E0 : BB : XX : XX : XX
<input type="checkbox"/> User defined OUI:		: : : XX : XX : XX (e.g.00:11:AB:XX:XX:XX)

Modify OUI Setting

To modify or delete an OUI, it must be first be deleted and then re-created.

Delete OUI Setting

To delete a specific OUI that had already been entered in the table at the bottom of the page, click on **Delete** in the **Action** column of the table. The specific OUI will be deleted from the table.

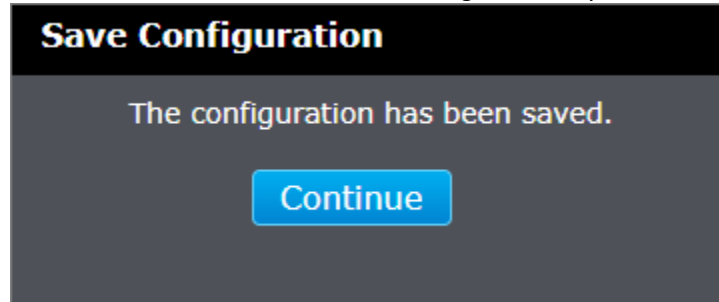
Voice VLAN OUI Table			
Total Entries:0			
ID	Description	Telephony OUI	Action
< < Voice VLAN OUI List is empty > >			

NOTE: The configured settings are only applied to the switch's **temporary** memory and will be lost upon the next power-cycle. Please follow these next steps to save the configurations to the switch's NV-RAM to ensure the settings will remain throughout power-cycles and reboots:

- From the menu on the left: click on **Save**, then click the blue button **Save Settings to Flash**.



2. Click **Continue** to return to the Web Configuration of your switch.



QoS (Quality of Service)

When a port on an Ethernet switch becomes oversubscribed, its egress queues contain more packets than the port can handle in a timely manner. In this situation, the port may be forced to delay the transmission of some packets, resulting in the delay of packets reaching their destinations. A port may be forced to delay transmission of packets while it handles other traffic, and, in some situations, some packets destined to be forwarded to an oversubscribed port from other switch ports may be discarded. Minor delays are often of no consequence to a network or its performance. But there are applications, referred to as delay or time sensitive applications, which can be impacted by packet delays. Voice transmission and video conferences are two examples. If packets carrying data in either of these cases are delayed from reaching their destination, the audio or video quality may suffer. This is where Cost of Service (CoS) is of value. It allows you to manage the flow of traffic through a switch by having the switch ports give higher priority to some packets, such as delay sensitive traffic, over other packets. This is referred to as prioritizing traffic.

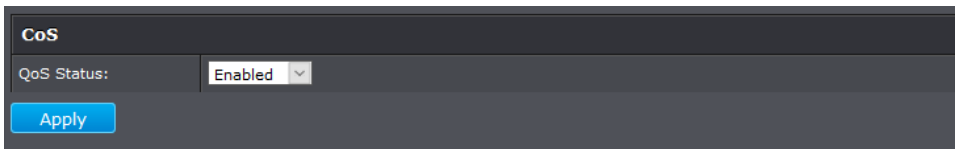
CoS

Set CoS priority settings

QoS > CoS

Note: Before mapping the CoS priorities and the egress queues, you must disable the **Jumbo** frame parameter on each port. When **Jumbo** frames are enabled, COS cannot be enabled.

1. Log into your switch management page (see "[Access your switch management page](#)" on page 7).
2. Click on **QoS** and click on **CoS**.
3. To enable the function, select **Enabled** in **QoS Status**, and then click **Apply**.

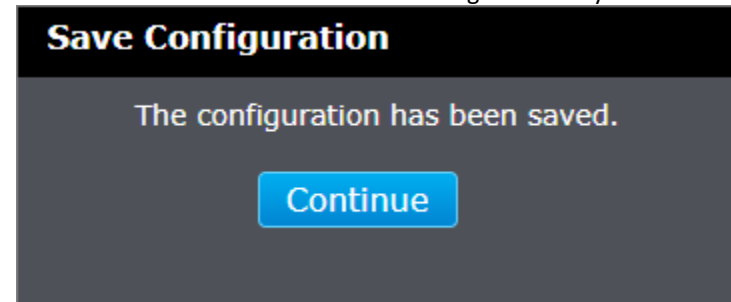


NOTE: The configured settings are only applied to the switch's **temporary** memory and will be lost upon the next power-cycle. Please follow these next steps to save the configurations to the switch's NV-RAM to ensure the settings will remain throughout power-cycles and reboots:

1. From the menu on the left: click on **Save**, then click the blue button **Save Settings to Flash**.



2. Click **Continue** to return to the Web Configuration of your switch.



Port Priority

Set Port Priority

QoS > Port Priority

The Port Priority values are assigned to an untagged frame at ingress for internal processing in the switch. This procedure explains how to change the default mappings of port priorities to the User Priority. This is set at the switch level. You cannot set this at the per-port level. To change the port priority mappings, perform the following procedure.

1. Log into your switch management page (see "[Access your switch management page](#)" on page 7).
2. Click on **QoS** and click on **Port Priority**.
3. For each port whose priority you want to change, select a priority in the **User Priority** column. Click **Apply** to save the settings.

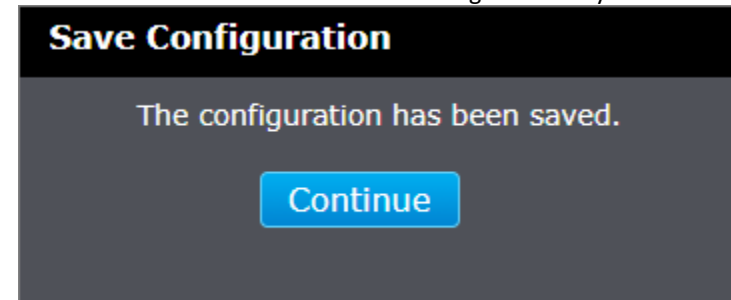
Port Priority Table		
Port	User Priority	Action
All	Low ▼	Apply
1	Medium ▼	Apply
2	Medium ▼	Apply
3	Medium ▼	Apply
4	Medium ▼	Apply
5	Medium ▼	Apply
6	Medium ▼	Apply
7	Medium ▼	Apply
8	Medium ▼	Apply

NOTE: The configured settings are only applied to the switch's **temporary** memory and will be lost upon the next power-cycle. Please follow these next steps to save the configurations to the switch's NV-RAM to ensure the settings will remain throughout power-cycles and reboots:

1. From the menu on the left: click on **Save**, then click the blue button **Save Settings to Flash**.



2. Click **Continue** to return to the Web Configuration of your switch.



DSCP

Set DSCP (Differentiated Services Code Point) Class Mapping settings

QoS > DSCP

If you choose to use the DSCP tags in your Access Control policy configuration, each DSCP value (0-63) that is relevant to your configuration needs to be mapped to one of the four egress queues (Low, Medium, High, or Highest). The default queue for all DSCP values is Medium. To assign the queue mappings to the DSCP values, perform the following procedure.

1. Log into your switch management page (see "[Access your switch management page](#)" on page 7).
2. Click on **QoS** and click on **DSCP**.
3. Select **Enabled** in the **DSCP Mapping Status** drop-down list to enable DSCP. For each value that is relevant to your configuration, select a queue priority (Low, Medium, High, or Highest) in the **Priority** column. Click **Apply** to save the settings. Click **Reset to Default** at the bottom of the page to reset the priorities back to their default values.

DSCP Priority Mapping Settings

DSCP Mapping Status: Enabled ▾

Apply

DSCP Priority Mapping Table

DSCP In	Priority	Action	DSCP In	Priority	Action	DSCP In	Priority	Action	DSCP In	Priority	Action
0-15	Low ▾	Apply	16-31	Low ▾	Apply	32-47	Low ▾	Apply	48-63	Low ▾	Apply
0	Medium ▾	Apply	16	Medium ▾	Apply	32	Medium ▾	Apply	48	Medium ▾	Apply
1	Medium ▾	Apply	17	Medium ▾	Apply	33	Medium ▾	Apply	49	Medium ▾	Apply
2	Medium ▾	Apply	18	Medium ▾	Apply	34	Medium ▾	Apply	50	Medium ▾	Apply
3	Medium ▾	Apply	19	Medium ▾	Apply	35	Medium ▾	Apply	51	Medium ▾	Apply

NOTE: The configured settings are only applied to the switch's **temporary** memory and will be lost upon the next power-cycle. Please follow these next steps to save the configurations to the switch's **NV-RAM** to ensure the settings will remain throughout power-cycles and reboots:

1. From the menu on the left: click on **Save**, then click the blue button **Save Settings to Flash**.

The screenshot shows a sidebar menu on the left with 'Save' highlighted in a red box. The main content area is titled 'Save Settings to Flash' and contains a note: 'Note: The switch will stop responding while saving the current configuration to flash.' Below the note, the 'Save Settings to Flash' button is highlighted in a red box.

2. Click **Continue** to return to the Web Configuration of your switch.

The screenshot shows a dialog box titled 'Save Configuration' with a dark background. The text inside reads 'The configuration has been saved.' Below the text is a blue button labeled 'Continue'.

Scheduling Algorithm

Set the Scheduling Algorithm

QoS > Scheduling Algorithm

1. Log into your switch management page (see "[Access your switch management page](#)" on page 7).
2. Click on **QoS** and click on **Scheduling Algorithm**.
3. Review the settings. Click **Apply** to save the settings.
 - **Strict Priority** - The port transmits all packets out of higher priority queues before transmitting any from the lower priority queues.
 - **Weighted Round Robin** - The port transmits a set number of packets from each queue, in a round robin fashion, so that each has a chance to transmit traffic.

Scheduling Algorithm Settings

Scheduling Algorithm	Strict Priority
----------------------	-----------------

NOTE: The configured settings are only applied to the switch's **temporary** memory and will be lost upon the next power-cycle. Please follow these next steps to save the configurations to the switch's NV-RAM to ensure the settings will remain throughout power-cycles and reboots:

1. From the menu on the left: click on **Save**, then click the blue button **Save Settings to Flash**.

Switch Info	<h3>Save Settings to Flash</h3> <p>Note: The switch will stop responding while saving the current configuration to flash.</p> <p>Save Settings to Flash</p>
System	
Network	
QoS	
Tools	
Save	

2. Click **Continue** to return to the Web Configuration of your switch.

Save Configuration

The configuration has been saved.

Continue

Tools

Firmware Upgrade

TRENDnet may periodically release firmware upgrades that may add features or fix problems associated with your TRENDnet switch model and version. To check if there is a firmware upgrade available for your device, please check your TRENDnet model and version using the link. <http://www.trendnet.com/downloads/>

In addition, it is also important to verify if the latest firmware version is newer than the one your switch is currently running. To identify the firmware that is currently loaded on your switch, log in to the switch, click on the System Info section or click on Tools and click on Firmware Upgrade. The firmware used by the switch is listed as Runtime Image or Image Version. If there is a newer version available, also review the release notes to check if there were any new features you may want or if any problems were fixed that you may have been experiencing.

1. If a firmware upgrade is available, download the firmware to your computer.

2. Unzip the file to a folder on your computer.

Please note the following:

- Do not interrupt the firmware upgrade process. Do not turn off the device or press the Reset button during the upgrade.
- If you are upgrade the firmware using a laptop computer, ensure that the laptop is connected to a power source or ensure that the battery is fully charged.
- Disable sleep mode on your computer as this may interrupt the firmware upgrade process.
- Do not upgrade the firmware using a wireless connection, only using a wired network connection.
- Any interruptions during the firmware upgrade process may permanently damage your switch.

Upgrade your switch firmware

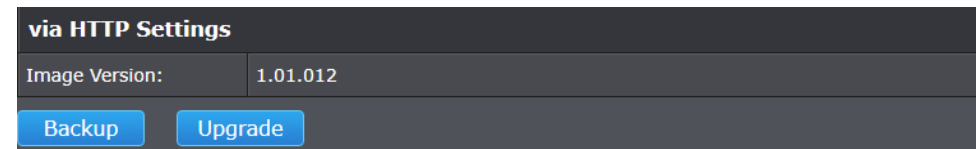
Tools > Firmware Upgrade

1. Log into your switch management page (see "[Access your switch management page](#)" on page 7).

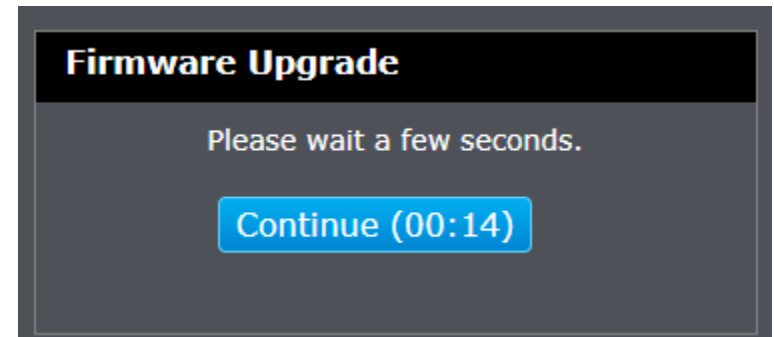
2. Click on **Tools**, click on **Firmware Upgrade**.

3. In the **via HTTP Settings** section, click **Upgrade** and click **Ok** on the prompt. Click **Backup** to download the current firmware version from the switch.

Note: System may automatically reset after the upgrade procedure

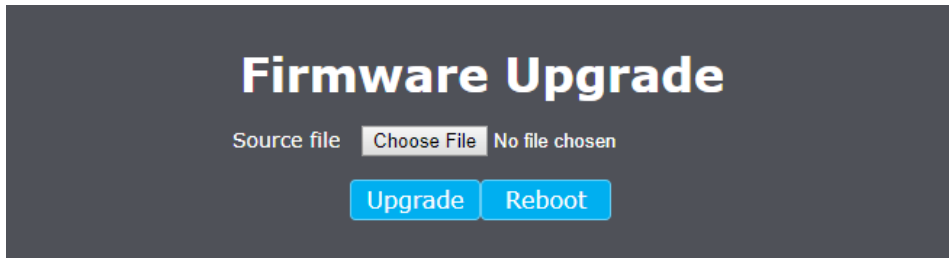


4. Wait for the 16 seconds and before you click **Continue**.



5. Depending on your web browser, click **Browse** or **Choose File** and navigate to the folder on your computer where the unzipped firmware file (.bin) is located and select it.

Note: While the switch in the upgrade state, you will not be able to access the management interface until you reboot the device.



6. Click **Upgrade**. If prompted, click **Yes** or **OK**.

Configuration

Backup and Restore your switches configuration setting

Tools > Configuration

You may have added many customized settings to your switch and in the case that you need to reset your switch to default, all your customized settings would be lost and would require you to manually reconfigure all of your switch settings instead of simply restoring from a backed up switch configuration file. The configuration will be backed up or restored only to the currently used image.

To back up your switch configuration:

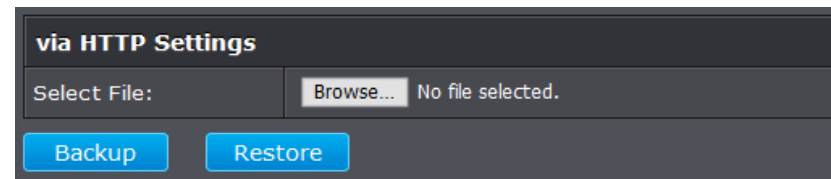
1. Log into your switch management page (see "[Access your switch management page](#)" on page 7).
2. Click on **Tools**, click on **Configuration**.
3. Click **Backup** to save the configuration file (config.bin) to your local hard drive.

Note: The configuration file (config.bin) will be saved to your default downloads folder.



To restore your switch configuration:

1. Log into your switch management page (see "[Access your switch management page](#)" on page 7).
2. Click on **Tools**, click on **Configuration**.
3. Next to **Select File**, depending on your web browser, click on **Browse** or **Choose File**.



4. A separate file navigation window should open.
5. Select the switch configuration file to restore and click **Restore**. (Default Filename: *config.bin*). If prompted, click **Yes** or **OK**.
6. Wait for the switch to restore settings.

Diagnosics

Cable Diagnostics Test

Tools > Diagnostics

The switch provides a basic cable diagnostic tool in the GUI for verifying the pairs in copper cabling and estimated distance for troubleshooting purposes.

- Note:** 1. The deviation of "Cable Fault Distance" is +/- 2 meters. No cable may be displayed in the table when the cable is less than 2 meters in length.
2. The test also measures the cable fault and identifies the fault in length according to the distance from the switch.

1. Log into your switch management page (see "[Access your switch management page](#)" on page 7).
2. Click on **Tools** and click on **Diagnostics**.
3. Click on the **Port** drop-down list to select which port to run the cable diagnostic and click **Test Now** to run the test.

Cable Diagnostics Settings

Port

The results will be displayed in the **Cable Diagnostic Table** below.

Cable Diagnostics Table		
Port	Test Result	Cable Fault Distance(meters)
1	Pair1:OK	Pair1:N/A
	Pair2:OK	Pair2:N/A
	Pair3:OK	Pair3:N/A
	Pair4:OK	Pair4:N/A

- **Test Results:** Displays the diagnostic results for each pair in the cable. One of the following cable status parameters is displayed:
 - **OK:** There is no problem detected with the cable.

- **Open in Cable:** There is an open wire within the cable.
- **Short in Cable:** Two wires are shorted together within the cable.
- **Cross talk in Cable:** There is crosstalk detected between one pair of wires and another pair within the cable.
- **Cable Fault Distance:** This parameter specifies the distance from the switch port to the cable fault.

Reboot

Reboot/Reset to Factory Defaults

Tools > Reboot

This section provides the procedures for rebooting or resetting the switch to factory default settings.

To reboot your switch:

You may want to reboot your switch if you are encountering difficulties with your switch and have attempted all other troubleshooting.

Note: You may want to save the settings to flash before reboot the switch under **Save (menu) > Save Settings to Flash (button)**. If you have not saved your current configuration settings to flash first, the configuration changes will be lost after a reboot.

There are two methods that can be used to reboot your switch.

- **Software Method (Switch Management Page):**

1. Log into your switch management page (see "[Access your switch management page](#)" on page 7).
2. Click on **Tools** and click on **Reboot**.
3. Click the **Reboot Type** drop-down list and select **Normal** and click **Apply** to initiate a reboot. Wait for the switch complete the rebooting process.

Reboot

Reboot Type:

Note: System will reboot in a few seconds after pressing the Apply button.

To reset your switch to factory defaults:

You may want to reset your switch to factory defaults if you are encountering difficulties with your switch and have attempted all other troubleshooting. Before you reset your switch to defaults, if possible, you should backup your switch configuration first, see "[Backup and restore your switch configuration settings](#)" on page 79.

There are two methods that can be used to reset your switch to factory defaults.

- **Hardware Method:** Using a paper clip, on the rear panel of the switch, push and hold the **Reset** button more than 6 seconds and release. Located on the front panel of your switch, see "[Product Hardware Features](#)" on page 2. Use this method if you are encountering difficulties with accessing your switch management page.

- **Software Method (Switch Management Page):**

1. Log into your switch management page (see "[Access your switch management page](#)" on page 7).
2. Click on **Tools** and click on **Reboot**.
3. Click the **Reboot Type** drop-down list and select from one of the following options
 - **Factory Default:** Resets all switch configuration settings to factory defaults including the IP address.
 - **Factory Default Except IP:** Resets all switch configuration settings to factory defaults and leaves the current IP address configuration.

Reboot

Reboot Type:

Note: System will reboot in a few seconds after pressing the Apply button.

The switch factory default settings are below.

Administrator User Name	admin
Administrator Password	admin
Switch IP Address	192.168.10.200
Switch Subnet Mask	255.255.255.0

Using the Switch Management Utility

The Management Utility allows you to do the following:

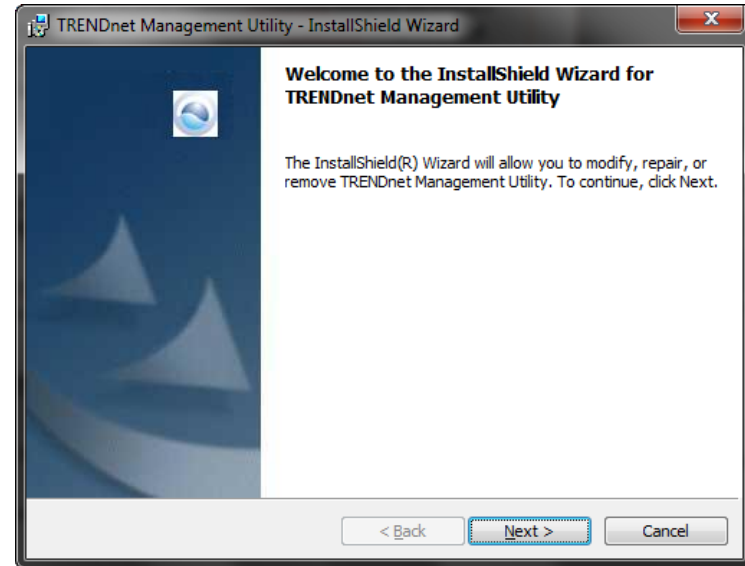
- You can easily discover supported TRENDnet web smart and edge smart switches on your network using the discover feature.
- You can modify the IP address settings, change the admin password, and upgrade firmware for multiple switches.

System Requirements

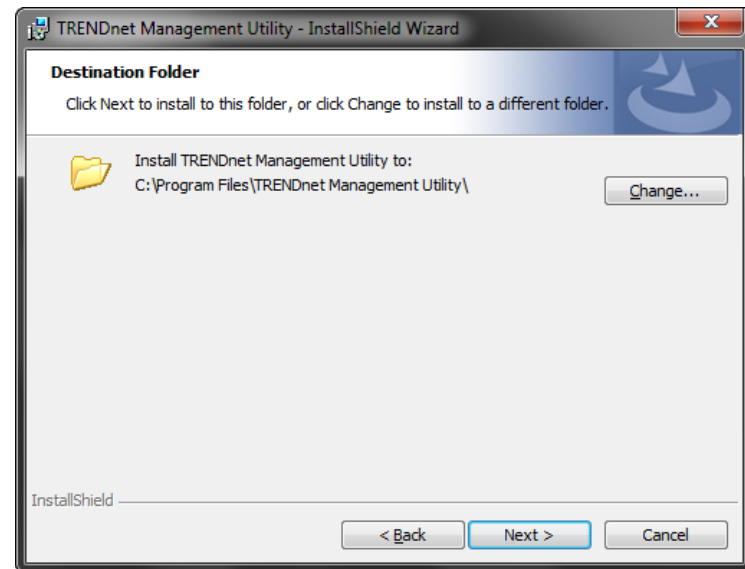
Operating System: Windows® 10 (32/64-bit), 8 (32/64-bit), Windows 7 (32/64-bit), Vista (32/64-bit), or XP (32/64-bit)

Installation

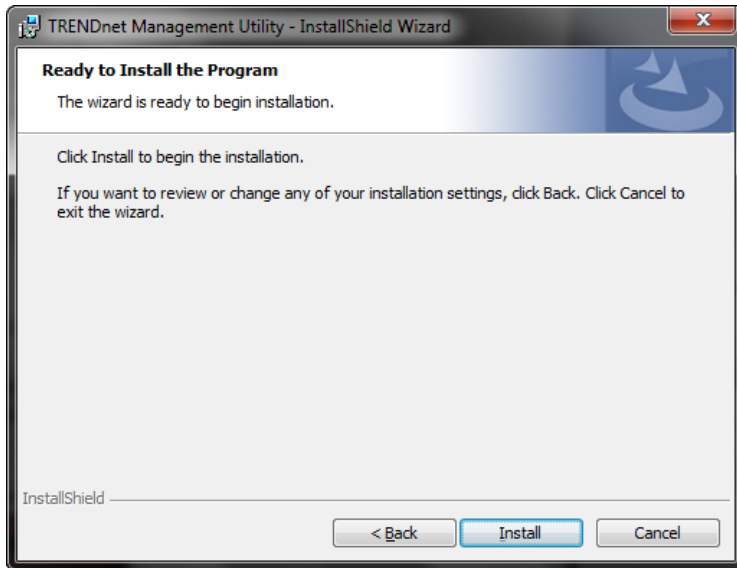
1. Download the latest version of the utility by navigating to <http://www.trendnet.com/support> and selecting the switch's model number within the Product Download drop-down list.
2. Extract the contents of the .zip file and run the .exe installer to install the utility.
3. At the Utility installation window, click **Next**.



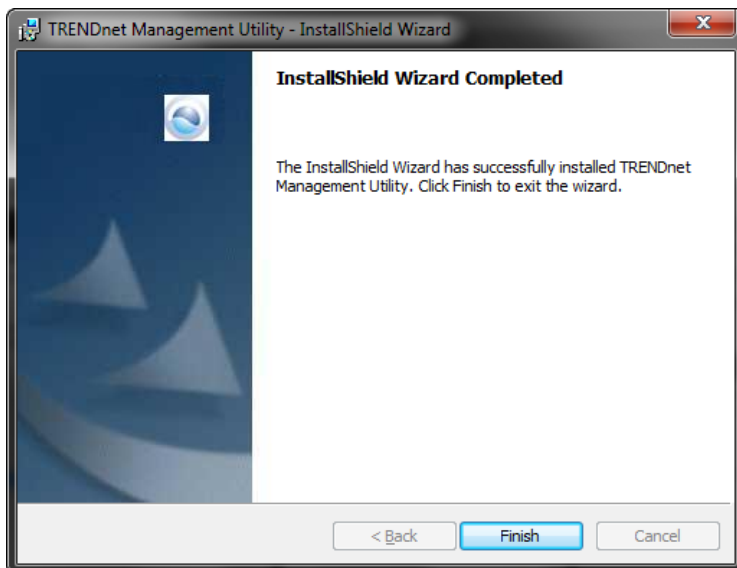
4. At the Install Location installation window, click **Next**.



5. At the Installation, click **Install**.



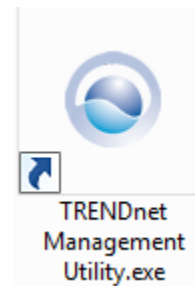
6. In the Completion window, click **Finish**.



Using the Utility

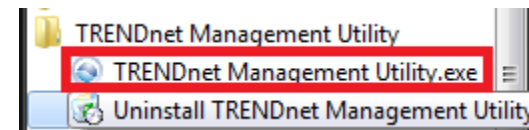
Launching the Utility

Upon completing the software installation, a desktop shortcut is automatically created. Double-click the icon to start the utility or open the utility if it is already running. Closing the utility will exit the application. You can also click **Exit** at the bottom of the utility user interface to exit the application.



You can also launch the utility from the Start Menu programs.

Start > Programs (or All Programs) > TRENDnet Management Utility > TRENDnet Management Utility.exe



Discovery List

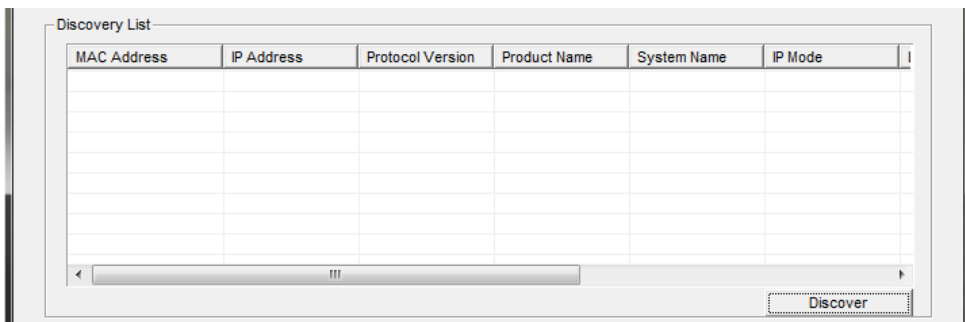
This is the list where you can discover all the Web management devices in your network.

By pressing the **“Discovery”** button, you can list all the Web Smart Management switches in the discovery list.

Double click or press the **“Add to monitor list”** button to select a device from the Discovery List to the Monitor List.

System word definitions in the Discovery List:


- **MAC Address:** Shows the device MAC Address.
- **IP Address:** Shows the current IP address of the device.
- **Protocol version:** Shows the version of the Utility protocol.
- **Product Name:** Shows the device product name.
- **System Name:** Shows the appointed device system name.
- **IP Mode:** Shows the DHCP status of the device.
- **Location:** Shows where the device is located.
- **Subnet Mask:** Shows the Subnet Mask set of the device.
- **Gateway:** Shows the Gateway set of the device.
- **Group Interval:**

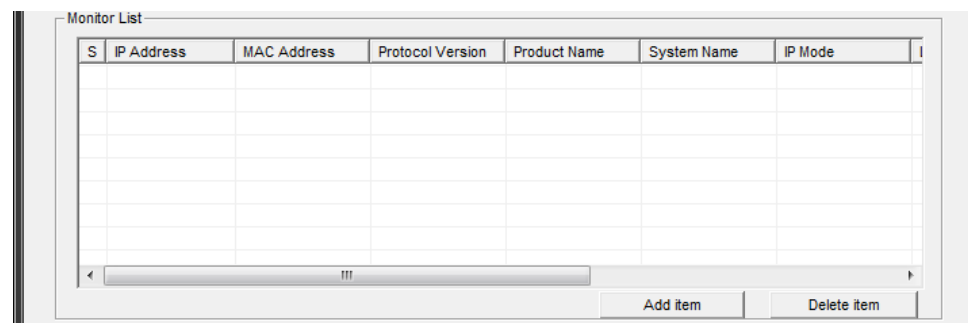


Monitor List

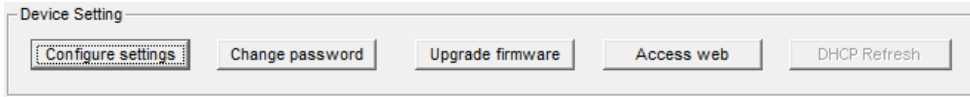
All the Web Smart switches in the Monitor List can be monitored; you can also receive the trap and show the status of the device.

System word definitions in the Monitor List:

- **S:** Shows the system symbol of the Web-Smart device,  represent for device system is not alive.
- **IP Address:** Shows the current IP address of the device.
- **MAC Address:** Shows the device MAC Address.
- **Protocol version:** Shows the version of the Utility protocol.
- **Product Name:** Shows the device product name.
- **System Name:** Shows the appointed device system name.
- **IP Mode:** Shows the DHCP status of the device.
- **Location:** Shows where the device is located.
- **Subnet Mask:** Shows the Subnet Mask set of the device.
- **Gateway:** Shows the Gateway set of the device.
- **Group Interval:**
- **Add Item:** To add a device to the Monitor List manually, enter the IP Address of the device that you want to monitor.
- **Delete Item:** To delete the device in the Monitor List.



Device Setting



You can set the device by using the function key in the Device Setting Dialog box.

Configuration Setting: In this Configuration Setting, you can set the IP Address, Subnet Mask, Gateway, Group Interval, System name, Location and IP Mode.

Select the device in the Discovery list or Monitor List and press this button, then the Configuration Setting window will appear, after entering the data that you want to change, you must enter the password and press the "Set" to process the data change immediately. The default password of TRENDnet Web Smart Switches is **"admin"**.

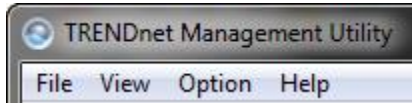
Password Change: You can use this Password Change when you need to change the password, fill in the password needed in the dialog box and press "Set" button to proceed the password change immediately.

Firmware Upgrade: When the device has a new function, there will be a new firmware to update the device, use this function to update.

Access Web: Double click the device in the Monitor List or select a device in the Monitor List and press this **"Web Access"** button to access the device in Web browser.

DHCP Refresh: Press this **"DHCP Refresh"** button to refresh IP address of selected device form DHCP server. (Only applies if Web Smart switch IP address settings are set to DHCP).

Main Menu Options



In the **"File TAB"**, there are Monitor Save, Monitor Save As, Monitor Load and Exit.

- **Monitor Save:** To record the setting of the Monitor List to the default, when you open the Web Management Utility next time, it will auto load the default recorded setting.
- **Monitor Save As:** To record the setting of the Monitor List in appointed filename and file path.
- **Monitor Load:** To manually load the setting file of the Monitor List.
- **Exit:** To exit the Web Management Utility.

In the **"View TAB"**, there are view log and clear log function, this function will help you to show trap setting.

- **View Log:** To show the event of the Web Management Utility and the device.
- **Clear Log:** to clear the log.

In the **"Option TAB"**, there are Refresh Time and Group Interval

- **Refresh Time:** *This function helps you to refresh the time of monitoring the device. Choose 15 secs, 30 secs, 1 min, 2 min and 5 min to select the time of monitoring.*
- **Group Interval:** 120~1225

In the **"Help TAB"**, there is About function, it will show out the version of the Web Management Utility.

Technical Specifications

Standards

- IEEE 802.1d
- IEEE 802.1w
- IEEE 802.1p
- IEEE 802.1Q
- IEEE 802.3
- IEEE 802.3u
- IEEE 802.3x
- IEEE 802.3ab
- IEEE 802.3az

Device Interface

- 8 x Gigabit ports
- LED indicators
- Reset button

Data Transfer Rate

- Ethernet: 10Mbps (half duplex), 20Mbps (full duplex)
- Fast Ethernet: 100Mbps (half duplex), 200Mbps (full duplex)
- Gigabit Ethernet: 2000Mbps (full duplex)

Performance

- Switch fabric: 16Gbps
- RAM buffer: 192KB
- MAC Address Table: 4K entries
- Jumbo Frames: 9KB
- Forwarding rate: 11.9Mpps (64-byte packet size)

Management

- HTTP Web based GUI
- SNMP v1, v2c
- Cable diagnostic test

- Backup/Restore Configuration
- Upload Firmware

Spanning Tree

- IEEE 802.1d STP (spanning tree protocol)
- IEEE 802.1w RSTP (rapid spanning tree protocol)

Link Aggregation

- Static link aggregation (up to 2 groups)

Quality of Service (QoS)

- Port-based QoS
- 802.1p Class of Service (CoS)
- Bandwidth Control/Rate Limiting per port (Min. Limit: 8Kbps)
- Queue Scheduling: Strict Priority (SP), Weighted Fair Queueing (WFQ)

VLAN

- Port-based VLAN
- 802.1Q Tagged VLAN
- Up to 32 VLAN groups, ID Range 1-4094
- Private VLAN
- Asymmetric VLAN
- Voice VLAN (5 user defined OUIs)

Multicast

- IGMP Snooping v1/2/3
- Block unknown multicast source
- Up to 32 multicast groups

Port Mirror

- One to one
- Many to one

Storm Control

- Broadcast (Min. Limit: 8Kbps)
- Multicast (Min. Limit: 8Kbps)
- Loopback Detection

Special Features

- Enable/disable 802.3az Power Saving
- Wall mountable

Power

- Input: 100 – 240V AC, 50/60Hz, 0.2A
- Output: 5V DC, 1A external power adapter
- Max consumption: 4.94W

Fan / Acoustics

- Fanless design

MTBF

- 1,525,460 hours

Operating Temperature

- 0° – 40° C (32° – 104° F)

Operating Humidity

- Max. 90% non-condensing

Dimensions

- 145 x 82 x 28mm (5.7 x 3.22 x 1.1 in.)

Weight

- 317g (11.18 oz.)

Certifications

- CE
- FCC

Warranty

- Lifetime

Package Contents

- TEG-S80ES
- Quick Installation Guide
- Power adapter (5V DC, 1A)

Troubleshooting

Q: I typed <http://192.168.10.200> in my Internet Browser Address Bar, but an error message says "The page cannot be displayed." How can I access the switch management page?

Answer:

1. Check your hardware settings again. See "[Switch Installation](#)" on page 7.
2. Make sure the Power and port Link/Activity and WLAN lights are lit.
3. Make sure your network adapter TCP/IP settings are set to [Use the following IP address](#) or [Static IP](#) (see the steps below).
4. Make sure your computer is connected to one of the Ethernet switch ports.
5. Since the switch default IP address is 192.168.10.200, make sure there are no other network devices assigned an IP address of 192.168.10.200

Windows 7/8.1/10

- a. Go into the **Control Panel**, click **Network and Sharing Center**.
- b. Click **Change Adapter Settings**, right-click the **Local Area Connection** icon.
- c. Then click **Properties** and click **Internet Protocol Version 4 (TCP/IPv4)**.
- d. Then click **Use the following IP address**, and make sure to assign your network adapter an IP address in the subnet of 192.168.10.x. Click **OK**

Windows Vista

- a. Go into the **Control Panel**, click **Network and Internet**.
- b. Click **Manage Network Connections**, right-click the **Local Area Connection** icon and click **Properties**.
- c. Click **Internet Protocol Version (TCP/IPv4)** and then click **Properties**.
- d. Then click **Use the following IP address**, and make sure to assign your network adapter an IP address in the subnet of 192.168.10.x. Click **OK**

Windows XP/2000

- a. Go into the **Control Panel**, double-click the **Network Connections** icon
- b. Right-click the **Local Area Connection** icon and the click **Properties**.
- c. Click **Internet Protocol (TCP/IP)** and click **Properties**.
- d. Then click **Use the following IP address**, and make sure to assign your network adapter an IP address in the subnet of 192.168.10.x. Click **OK**

Note: *If you are experiencing difficulties, please contact your computer or operating system manufacturer for assistance.*

Q: If my switch IP address is different than my network's subnet, what should I do?

Answer:

You should still configure the switch first. After all the settings are applied, go to the switch configuration page, click on System, click IPv4 Setup and change the IP address of the switch to be within your network's IP subnet. Click Apply, then click OK. Then click Save Settings to Flash (menu) and click Save Settings to Flash to save the IP settings to the NV-RAM.

Q: I changed the IP address of the switch, but I forgot it. How do I reset my switch?

Answer:

Using a paper clip, push and hold the reset button on the rear of the switch and release after 6~10 seconds.

The default IP address of the switch is 192.168.10.200. The default user name and password is "admin".

Appendix

How to find your IP address?

Note: Please note that although the following procedures provided to follow for your operating system on configuring your network settings can be used as general guidelines, however, it is strongly recommended that you consult your computer or operating system manufacturer directly for assistance on the proper procedure for configuring network settings.

Command Prompt Method

Windows 2000/XP/Vista/7/8.1/10

1. On your keyboard, press **Windows Logo+R** keys simultaneously to bring up the Run dialog box.
2. In the dialog box, type **cmd** to bring up the command prompt.
3. In the command prompt, type **ipconfig /all** to display your IP address settings.

MAC OS X

1. Navigate to your **Applications** folder and open **Utilities**.
2. Double-click on **Terminal** to launch the command prompt.
3. In the command prompt, type **ipconfig getifaddr <en0 or en1>** to display the wired or wireless IP address settings.

Note: **en0** is typically the wired Ethernet and **en1** is typically the wireless Airport interface.

Graphical Method

MAC OS 10.6/10.5

1. From the Apple menu, select **System Preferences**.
2. In System Preferences, from the **View** menu, select **Network**.
3. In the Network preference window, click a network port (e.g., Ethernet, AirPort, modem). If you are connected, you'll see your IP address settings under "Status:"

MAC OS 10.4

1. From the Apple menu, select **Location**, and then **Network Preferences**.
2. In the Network Preference window, next to "Show:", select **Network Status**. You'll see your network status and your IP address settings displayed.

Note: If you are experiencing difficulties, please contact your computer or operating system manufacturer for assistance.

How to configure your network settings to use a static IP address?

Note: Please note that although the following procedures provided to follow for your operating system on configuring your network settings can be used as general guidelines, however, it is strongly recommended that you consult your computer or operating system manufacturer directly for assistance on the proper procedure for configuring network settings.

Windows 7/8.1/10

- a. Go into the **Control Panel**, click **Network and Sharing Center**.
- b. Click **Change Adapter Settings**, right-click the **Local Area Connection** icon.
- c. Then click **Properties** and click **Internet Protocol Version 4 (TCP/IPv4)**.
- d. Then click **Use the following IP address**, and assign your network adapter a static IP address. Click **OK**

Windows Vista

- a. Go into the **Control Panel**, click **Network and Internet**.
- b. Click **Manage Network Connections**, right-click the **Local Area Connection** icon and click **Properties**.
- c. Click **Internet Protocol Version (TCP/IPv4)** and then click **Properties**.
- d. Then click **Use the following IP address**, and assign your network adapter a static IP address. Click **OK**

Windows XP/2000

- a. Go into the **Control Panel**, double-click the **Network Connections** icon
- b. Right-click the **Local Area Connection** icon and the click **Properties**.
- c. Click **Internet Protocol (TCP/IP)** and click **Properties**.
- d. Then click **Use the following IP address**, and assign your network adapter a static IP address. Click **OK**

MAC OS 10.4/10.5/10.6

- a. From the **Apple**, drop-down list, select **System Preferences**.
- b. Click the **Network** icon.
- c. From the **Location** drop-down list, select **Automatic**.
- d. Select and view your Ethernet connection.

In MAC OS 10.4, from the **Show** drop-down list, select **Built-in Ethernet** and select the **TCP/IP** tab.

In MAC OS 10.5/10.6, in the left column, select **Ethernet**.

e. Configure TCP/IP to use a static IP.

In MAC 10.4, from the **Configure IPv4**, drop-down list, select **Manually** and assign your network adapter a static IP address. Then click the **Apply Now** button.

In MAC 10.5/10.6, from the **Configure** drop-down list, select **Manually** and assign your network adapter a static IP address . Then click the **Apply** button.

f. Restart your computer.

Note: *If you are experiencing difficulties, please contact your computer or operating system manufacturer for assistance.*

How to find your MAC address?

In Windows 2000/XP/Vista/7/8.1/10,

Your computer MAC addresses are also displayed in this window, however, you can type **getmac -v** to display the MAC addresses only.

In MAC OS 10.4,

1. **Apple Menu > System Preferences > Network**
2. From the **Show** menu, select **Built-in Ethernet**.
3. On the **Ethernet** tab, the **Ethernet ID** is your MAC Address.

In MAC OS 10.5/10.6,

1. **Apple Menu > System Preferences > Network**
2. Select **Ethernet** from the list on the left.
3. Click the **Advanced** button.
3. On the **Ethernet** tab, the **Ethernet ID** is your MAC Address.

How do I use the ping tool to check for network device connectivity?

Windows 2000/XP/Vista/7/8.1/10

1. On your keyboard, press **Windows Logo+R** keys simultaneously to bring up the Run dialog box.
2. In the dialog box, type **cmd** to bring up the command prompt.
3. In the command prompt, type **ping <ip_address>** with the **<ip_address>** being the IP address you want ping and check for connectivity.

Example: Usage of ping command and successful replies from device.

```
C:\Users>ping 192.168.10.100
```

```
Pinging 192.168.10.100 with 32 bytes of data:
```

```
Reply from 192.168.10.100: bytes=32 time<1ms TTL=64
```

```
Reply from 192.168.10.100: bytes=32 time<1ms TTL=64
```

```
Reply from 192.168.10.100: bytes=32 time<1ms TTL=64
```

```
Reply from 192.168.10.100: bytes=32 time<1ms TTL=64
```

```
Ping statistics for 192.168.10.100:
```

```
    Packets: Sent = 4, Received = 4, Lost = 0 (0% loss),
```

```
Approximate round trip times in milli-seconds:
```

```
    Minimum = 0ms, Maximum = 0ms, Average = 0ms
```

MAC OS X

1. Navigate to your **Applications** folder and open **Utilities**.
2. Double-click on **Terminal** to launch the command prompt.
3. In the command prompt, type **ping -c <#> <ip_address>** with the **<#>** *ping being the number of time you want to ping and the <ip_address>* being the IP address you want ping and check for connectivity.

Example: `ping -c 4 192.168.10.100`

Federal Communication Commission Interference Statement

This equipment has been tested and found to comply with the limits for a Class B digital device, pursuant to Part 15 of the FCC Rules. These limits are designed to provide reasonable protection against harmful interference in a residential installation. This equipment generates, uses and can radiate radio frequency energy and, if not installed and used in accordance with the instructions, may cause harmful interference to radio communications. However, there is no guarantee that interference will not occur in a particular installation. If this equipment does cause harmful interference to radio or television reception, which can be determined by turning the equipment off and on, the user is encouraged to try to correct the interference by one of the following measures:

- Reorient or relocate the receiving antenna.
- Increase the separation between the equipment and receiver.
- Connect the equipment into an outlet on a circuit different from that to which the receiver is connected.
- Consult the dealer or an experienced radio/TV technician for help.

FCC Caution: Any changes or modifications not expressly approved by the party responsible for compliance could void the user's authority to operate this equipment.

This device complies with Part 15 of the FCC Rules. Operation is subject to the following two conditions: (1) This device may not cause harmful interference, and (2) this device must accept any interference received, including interference that may cause undesired operation.



IMPORTANT NOTE:

Radiation Exposure Statement:

This equipment complies with FCC radiation exposure limits set forth for an uncontrolled environment. This equipment should be installed and operated with minimum distance 20cm between the radiator & your body.

This transmitter must not be co-located or operating in conjunction with any other antenna or transmitter.

Country Code selection feature to be disabled for products marketed to the US/CANADA

RoHS

This product is RoHS compliant.



Europe – EU Declaration of Conformity

- EN 60950-1: 2006 + A11: 2009 + A1: 2010 + A12: 2011 + A2: 2013
- EN 55032: 2015 (CISPR32: 2015) (Class B)
- EN 61000-3-2: 2014
- EN 61000-3-3: 2013
- EN 55024: 2010 + A1: 2015



Directives:

EMC Directive 2014/30/EU
 RoHS Directive 2011/65/EU
 WEEE Directive 2012/19/EU
 REACH Regulation (EC) No. 1907/2006
 Low Voltage Directive 2014/35/EU
 Ecodesign Directive 2009/125/EC

Limited Warranty

TRENDnet warrants only to the original purchaser of this product from a TRENDnet authorized reseller or distributor that this product will be free from defects in material and workmanship under normal use and service. This limited warranty is non-transferable and does not apply to any purchaser who bought the product from a reseller or distributor not authorized by TRENDnet, including but not limited to purchases from Internet auction sites.

Limited Warranty

TRENDnet warrants its products against defects in material and workmanship, under normal use and service. Specific warranty periods are listed on each of the respective product pages on the TRENDnet website.

- AC/DC Power Adapter, Cooling Fan, and Power Supply carry a one-year warranty.

Limited Lifetime Warranty

TRENDnet offers a limited lifetime warranty for all of its metal-enclosed network switches that have been purchased in the United States/Canada on or after 1/1/2015.

- Cooling fan and internal power supply carry a one-year warranty

To obtain an RMA, the ORIGINAL PURCHASER must show Proof of Purchase and return the unit to the address provided. The customer is responsible for any shipping-related costs that may occur. Replacement goods will be shipped back to the customer at TRENDnet's expense.

Upon receiving the RMA unit, TRENDnet may repair the unit using refurbished parts. In the event that the RMA unit needs to be replaced, TRENDnet may replace it with a refurbished product of the same or comparable model.

In the event that, after evaluation, TRENDnet cannot replace the defective product or there is no comparable model available, we will refund the depreciated value of the product.

If a product does not operate as warranted during the applicable warranty period, TRENDnet shall reserve the right, at its expense, to repair or replace the defective product or part and deliver an equivalent product or part to the customer. The repair/replacement unit's warranty continues from the original date of purchase. All products that are replaced become the property of TRENDnet. Replacement products may be new or reconditioned. TRENDnet does not issue refunds or credit. Please contact the point-of-purchase for their return policies.

TRENDnet shall not be responsible for any software, firmware, information, or memory data of customer contained in, stored on, or integrated with any products returned to TRENDnet pursuant to any warranty.

There are no user serviceable parts inside the product. Do not remove or attempt to service the product by any unauthorized service center. This warranty is voided if (i) the product has been modified or repaired by any unauthorized service center, (ii) the product was subject to accident, abuse, or improper use, or (iii) the product was subject to conditions more severe than those specified in the manual.

Warranty service may be obtained by contacting TRENDnet within the applicable warranty period and providing a copy of the dated proof of the purchase. Upon proper submission of required documentation, a Return Material Authorization (RMA) number will be issued. An RMA number is required in order to initiate warranty service support for all TRENDnet products. Products that are sent to TRENDnet for RMA service must have the RMA number marked on the outside of return packages and sent to TRENDnet prepaid, insured and packaged appropriately for safe shipment. International customers

shipping from outside of the USA and Canada are responsible for any return shipping and/or customs charges, including but not limited to, duty, tax, and other fees.

Refurbished product: Refurbished products carry a 90-day warranty after date of purchase. Please retain the dated sales receipt with purchase price clearly visible as evidence of the original purchaser's date of purchase. Replacement products may be refurbished or contain refurbished materials. If TRENDnet, by its sole determination, is unable to replace the defective product, we will offer a refund for the depreciated value of the product.

WARRANTIES EXCLUSIVE: IF THE TRENDNET PRODUCT DOES NOT OPERATE AS WARRANTED ABOVE, THE CUSTOMER'S SOLE REMEDY SHALL BE, AT TRENDNET'S OPTION, REPAIR OR REPLACE. THE FOREGOING WARRANTIES AND REMEDIES ARE EXCLUSIVE AND ARE IN LIEU OF ALL OTHER WARRANTIES, EXPRESSED OR IMPLIED, EITHER IN FACT OR BY OPERATION OF LAW, STATUTORY OR OTHERWISE, INCLUDING WARRANTIES OF MERCHANTABILITY AND FITNESS FOR A PARTICULAR PURPOSE. TRENDNET NEITHER ASSUMES NOR AUTHORIZES ANY OTHER PERSON TO ASSUME FOR IT ANY OTHER LIABILITY IN CONNECTION WITH THE SALE, INSTALLATION, MAINTENANCE, OR USE OF TRENDNET'S PRODUCTS.

TRENDNET SHALL NOT BE LIABLE UNDER THIS WARRANTY IF ITS TESTING AND EXAMINATION DISCLOSE THAT THE ALLEGED DEFECT IN THE PRODUCT DOES NOT EXIST OR WAS CAUSED BY CUSTOMER'S OR ANY THIRD PERSON'S MISUSE, NEGLIGENCE, IMPROPER INSTALLATION OR TESTING, UNAUTHORIZED ATTEMPTS TO REPAIR OR MODIFY, OR ANY OTHER CAUSE BEYOND THE RANGE OF THE INTENDED USE, OR BY ACCIDENT, FIRE, LIGHTNING, OR OTHER HAZARD.

LIMITATION OF LIABILITY: TO THE FULL EXTENT ALLOWED BY LAW, TRENDNET ALSO EXCLUDES FOR ITSELF AND ITS SUPPLIERS ANY LIABILITY, WHETHER BASED IN

CONTRACT OR TORT (INCLUDING NEGLIGENCE), FOR INCIDENTAL, CONSEQUENTIAL, INDIRECT, SPECIAL, OR PUNITIVE DAMAGES OF ANY KIND, OR FOR LOSS OF REVENUE OR PROFITS, LOSS OF BUSINESS, LOSS OF INFORMATION OR DATE, OR OTHER FINANCIAL LOSS ARISING OUT OF OR IN CONNECTION WITH THE SALE, INSTALLATION, MAINTENANCE, USE, PERFORMANCE, FAILURE, OR INTERRUPTION OF THE POSSIBILITY OF SUCH DAMAGES, AND LIMITS ITS LIABILITY TO REPAIR, REPLACEMENT, OR REFUND OF THE PURCHASE PRICE PAID, AT TRENDNET'S OPTION. THIS DISCLAIMER OF LIABILITY FOR DAMAGES WILL NOT BE AFFECTED IF ANY REMEDY PROVIDED HEREIN SHALL FAIL OF ITS ESSENTIAL PURPOSE.

Governing Law: This Limited Warranty shall be governed by the laws of the state of California.

Some TRENDnet products include software code written by third party developers. These codes are subject to the GNU General Public License ("GPL") or GNU Lesser General Public License ("LGPL").

Visit <http://www.trendnet.com/gpl> or the support section on <http://www.trendnet.com> and search for the desired TRENDnet product to access to the GPL Code or LGPL Code. These codes are distributed WITHOUT WARRANTY and are subject to the copyrights of the developers. TRENDnet does not provide technical support for these codes. Please visit <http://www.gnu.org/licenses/gpl.txt> or <http://www.gnu.org/licenses/lgpl.txt> for specific terms of each license.

PWP07172015v3

2018/12/07



Product Warranty Registration

Please take a moment to register your product online.
Go to TRENDnet's website at <http://www.trendnet.com/register>

TRENDnet
20675 Manhattan Place
Torrance, CA 90501. USA