

Total control[®]

Owner's Manual

MRX-4IR

Network Base Station



COMPLETE[™]
CONTROL

 **URC**[™]
Control the Experience.

MRX-4IR Network Base Station Owners Manual ©2012 - 2014 Universal Remote Control, Inc.

The information in this Owner's Manual is copyright protected. No part of this manual may be copied or reproduced in any form without prior written consent from Universal Remote Control, Inc.

UNIVERSAL REMOTE CONTROL, INC. SHALL NOT BE LIABLE FOR OPERATIONAL, TECHNICAL OR EDITORIAL ERRORS/OMISSIONS MADE IN THIS MANUAL.

The information in this Owner's Manual may be subject to change without prior notice.

Total Control is a registered trademark of Universal Remote Control, Inc.

URC - Control the Experience is a registered trademark of Universal Remote Control, Inc.

All other brand or product names are trademarks or registered trademarks of their respective companies or organizations.



500 Mamaroneck Avenue, Harrison, NY 10528
Phone: (914) 835-4484 Fax: (914) 835-4532

TABLE OF CONTENTS

Introduction	1
Features and Benefits	1
Parts Guide	1
Front, Rear and Bottom Panel Descriptions	2
Network Installation	5
Network Discovery & Download	6
Optimizing IR Flasher Levels	7
Overview of IR Routing	8
Limited Warranty Statement	9
End User Agreement	11
Specifications	12
Federal Communication Commission Interference Statement	13
Regulatory Information to the user	14
Declaration of Conformity	15

Introduction

Thank you for purchasing the MRX-4IR Network Base Station. The MRX-4IR requires a Total Control MRX Advanced System Controller and compatible interfaces, programmed by a Custom Professional, to control your home. Communicating over the network using Wi-Fi, or a wired LAN connection, the MRX-4IR receives commands from the System Controller and relays them, via IR, to four or more devices. Controlling your home is simple with the MRX-4IR.

Features and Benefits

- **IR Flasher Outputs**

Control up to four of your components without ever getting up from your seat.

- **Front IR Blaster**

Control IR devices where an IR emitter cannot reach the device's location, like a TV over a fireplace.

- **Network Connectivity**

Receives commands over the network from an MRX Advanced System Controller and then sends IR signals to control your components.

- **Compact Size**

The small size of the MRX-4IR allows it to easily fit behind devices or into places where a traditional base station would not.

Parts Guide

The MRX-4IR includes:

1 - MRX-4IR	1 - Mounting Plate
1 - AC Power Adapter	4 - IR Emitters (3.5mm plugs)
4 - Mounting Screws	1 - Owner's Manual

Front, Rear and Bottom Panel Descriptions

Front Panel

The front panel consists of 3 indicator lights and an IR Blaster.



Power LED: The Power LED illuminates when the unit is powered.

Status LED: When the MRX-4IR powers up, both the Status and Data LEDs blink. When a network connection is made, the Status LED color will vary depending upon its “connected state”: good signal strength is represented by “Green”, poor signal strength by “Orange” (which is only present when a wireless connection is used) and no connection is OFF.

Data LED: The Data LED flashes as the MRX-4IR transmits IR data.

IR Blaster: The front IR Blaster sends IR signals to one or more components placed in direct line of sight.

Rear Panel

The rear panel ports are:



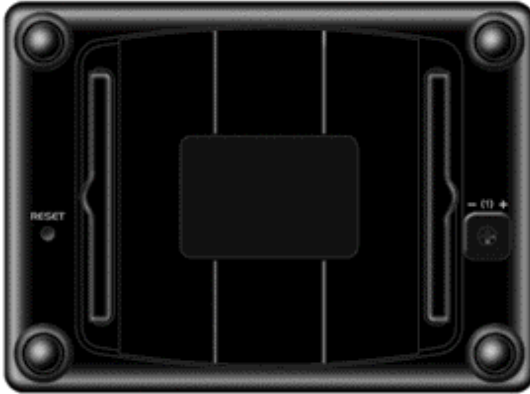
DC 12V Power: Plug in the included 12V DC 1A power supply.

IR Outputs: Connect an included 3.5mm IR emitter to each of the four IR outputs. Adjust the IR output signal strength for port 1 using the attenuator located on the bottom of the unit.

LAN Connection: If a wired connection is needed, this port uses a standard Ethernet (RJ-45) plug to communicate via the local area network.

Bottom Panel

The bottom panel consists of:



Reset Button: The Reset button is located on the bottom of the unit, and requires a stylus, or paper clip to press the button. Pressing the Reset button will cycle the MRX-4IR's power. (Unplugging the MRX-4IR's power cable and then plugging it back in, also performs the same function.)

Pressing and holding the Reset button for 15 seconds, will factory default the MRX-4IR, and return the unit back to its original unprogrammed state.

Mac Address Sticker: The MAC Address (12 numbers) identifies this wireless device when connected to the network.

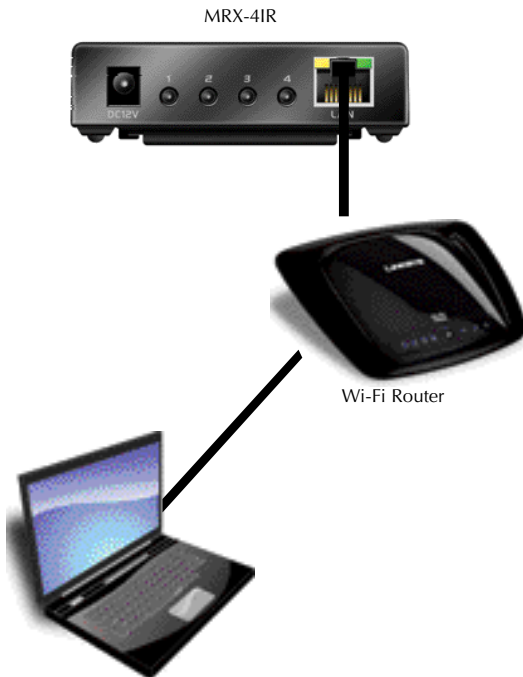
IR Attenuator: Use the included adjustment tool (or a flathead screwdriver) to increase or decrease the intensity level for IR output #1.

Network Installation

WARNING!! Before proceeding, a Custom Professional is required to install and configure your MRX-4IR.

The MRX-4IR is a network base station that allows full control of your components with the use of Total Control MRX Advanced System Controllers and compatible interfaces. Once installed on the network, and a button is pressed on an interface, a command is transferred over the customer's network to the MRX Advanced Network System Controller, which in turn is routed to the MRX-4IR and then sends IR commands to the components you specify.

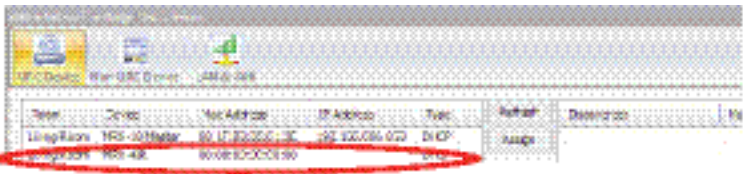
1. Connect the MRX-4IR onto the network (wired or wireless).
2. Connect your laptop into the **same network** as the MRX-4IR.



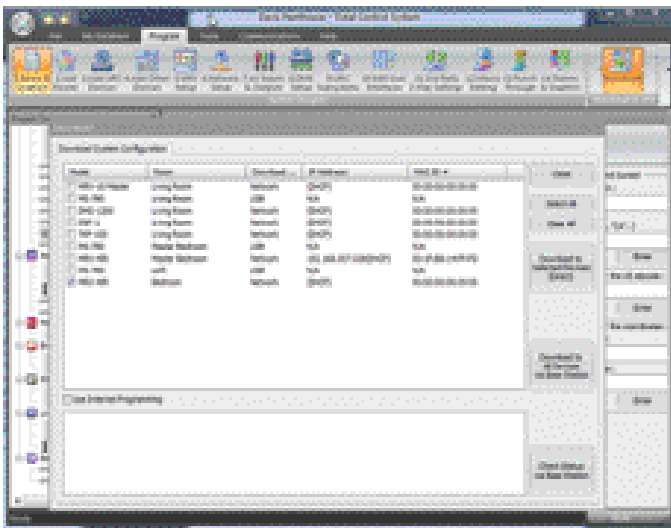
Network Discovery & Download

WARNING!! Before proceeding, a Custom Professional is required to install and configure your MRX-4IR.

1. Open a new or current project. In **Step 3: Add URC Devices**, add an **MRX-4IR** to a room included in your project which represents the physical location of the unit.
2. In **Step 6: Network Setup**, discover the MRX-4IR using the same process used for other Total Control network products in the project.



3. Press the **Download** button within the Program menu.
4. Make sure to check the MRX-4IR checkbox, then press the **Download to Selected Devices (Direct)** button.



Optimizing IR Flasher Levels

Test a few commands for each component before fixing the flasher in place on the front panel of a device.

Since TiVo, Satellite Receivers and Cable Boxes are all extremely sensitive to IR overload or saturation, you should test them thoroughly. Put up the on screen guide and test the navigation arrows. If operation is inconsistent or sluggish, lower the IR line output for port 1 only and/or reposition the flasher.

If you still have sluggish operation, make sure IR routing is used rather than ALL. When IR commands are sent to all the flashers in a cabinet, you can have difficulty adjusting the IR Output. Program URC Accelerator to send IR commands only via a specific IR port (1-4), then readjust the IR Line Output level.

Connect an IR emitter to each IR output and run the emitter wire to the IR receiver of each component. DO NOT STICK the emitter in place yet. Adjust the LEVEL on IR port 1 or adjust the emitter PLACEMENT for ports 2-4 until the component responds to IR commands then stick the emitter in place.

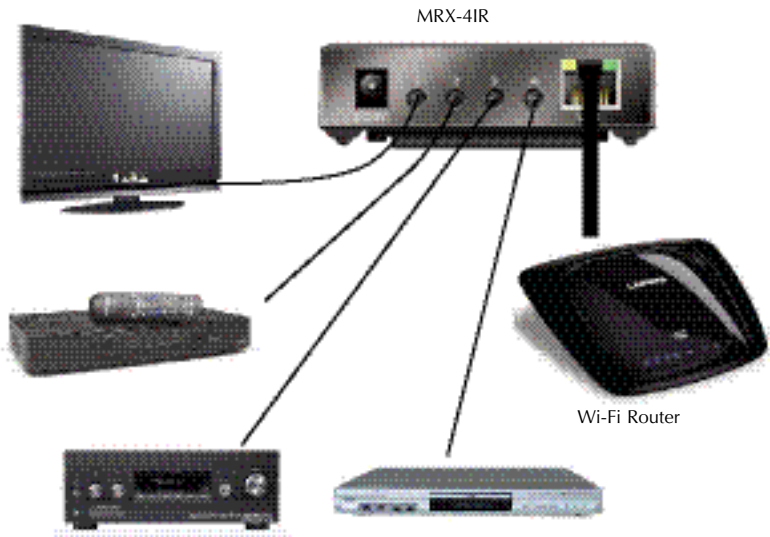
IR Outputs: These ports can be as discrete, 'routed' outputs that only send IR commands to the specific component that each emitter is attached. This assures accurate control in that a given component's commands are routed only to its dedicated IR output and emitter, preventing IR oversaturation from multiple emitters flashing at the same time.

POLARITY: Tip=IR data, Sleeve=GND.

Overview of IR Routing

There are several considerations to take into account when you are installing an MRX-4IR to control an array of components:

1. When connecting a flasher from the MRX-4IR to your component make sure to notate the IR outputs being used. Program the sameport designations into URC Accelerator.
2. Assigning each component with its own individualized port number helps to control multiple components eliminating interference.
3. Identical components must receive IR commands ONLY from a dedicated flasher affixed to its front panel or a rear panel direct IR input.



Limited Warranty Statement

1. Limited Warranty and Disclaimers

Universal Remote Control, Inc. ("URC") warrants that the URC equipment shall be free from defects in material and workmanship under normal usage for two (2) years from purchase when such is purchased from URC. **This limited warranty is valid only in the United States of America.** URC warrants that the software will substantially conform in any material respect to its functional specifications at the time of delivery. URC SHALL NOT BE LIABLE FOR OPERATIONAL, TECHNICAL OR EDITORIAL ERRORS AND/OR OMISSIONS MADE IN THE URC DOCUMENTATION. URC DOES NOT WARRANT THAT THE URC SOFTWARE IS BUG-FREE OR ERROR FREE OR THAT THERE ARE NO ERRORS/BUGS IN THE URC SOFTWARE.

URC warrants that at the time of purchase the URC equipment and the URC software complied with all applicable regulations and policies of the Federal Communications Commissions ("FCC") regarding electromagnetic interference caused by electronic/computing devices and to the extent that the URC equipment and/or the URC software fails to so comply, URC shall, at its own expense, take all reasonable measures to promptly cause such to comply.

URC equipment purchases from other than an authorized URC dealer or distributor are without warranty.

THIS LIMITED WARRANTY DOES NOT COVER TECHNICAL ASSISTANCE FOR HARDWARE OR SOFTWARE USAGE EXCEPT AS EXPRESSLY PROVIDED FOR HEREIN, THE EQUIPMENT, SOFTWARE AND DOCUMENTATION OF URC ARE SUPPLIED "AS IS" WITHOUT ANY WARRANTY, EXPRESS, STATUTORY OR IMPLIED, OF ANY KIND. TO THE MAXIMUM EXTENT PERMITTED BY APPLICABLE LAW, URC EXPRESSLY DISCLAIMS ALL WARRANTIES, EXPRESS, STATUTORY OR IMPLIED, INCLUDING BUT NOT LIMITED TO THE WARRANTIES OF MERCHANTABILITY AND FITNESS FOR A PARTICULAR PURPOSE. URC DOES NOT WARRANT, GUARANTEE, OR MAKE ANY REPRESENTATIONS REGARDING THE USE OF, OR THE RESULTS OF THE USE OF, THE EQUIPMENT, SOFTWARE OR DOCUMENTATION IN TERMS OF CORRECTNESS, ACCURACY, RELIABILITY OR OTHERWISE.

EXCEPT AS EXPRESSLY PROVIDED FOR HEREIN, TECHNICAL SERVICES ARE SUPPLIED "AS IS", WITHOUT ANY WARRANTY, EXPRESS, STATUTORY OR IMPLIED, OF ANY KIND. TO THE MAXIMUM EXTENT PERMITTED BY APPLICABLE LAW, URC EXPRESSLY DISCLAIMS ALL WARRANTIES, EXPRESS, STATUTORY OR IMPLIED, INCLUDING BUT

NOT LIMITED TO THE WARRANTIES OF QUALITY OR REASONABLE SKILL AND CARE, OR OUTCOME OR RESULTS. WITHOUT IN ANY WAY LIMITING THE GENERALITY OF THE OTHER PROVISIONS HEREIN, WARRANTY DOES NOT COVER: (I) DAMAGE FROM MISUSE, NEGLIGENCE OR ACTS OF NATURE, (II) MODIFICATIONS, (III) INTEGRATION WITH THIRD PARTY CONTENT (IV) BEYOND THE WARRANTY PERIOD AND/OR FAILURE TO FOLLOW URC WARRANTY CLAIM PROCEDURE.

The warranty limitations and warranty disclaimers may not apply to end user in whole or in part, where such are restricted or excluded by applicable law and such shall apply to the maximum extent permitted by applicable law.

In the event of any warranty claim, URC will, at its sole option, repair the URC equipment using new or comparable rebuilt parts, or exchange the URC equipment for new or rebuilt equipment. **In the event of a defect, these are the end user's exclusive remedies.**

All the URC equipment returned for service, exchange or repair require an RGA number. To obtain an RGA number, you must complete a Return Request Form which you may obtain by calling (914) 835-4484 or contacting URC at returnrequest@universalremote.com. To obtain warranty service, end user must deliver the URC equipment, freight prepaid, in its original packaging or packaging affording adequate protection to URC at 420 Columbus Avenue, Valhalla, NY 10595. It is the end user's responsibility to backup any macro programming, artwork, software or other materials that may have been programmed into the unit. It is likely that such data, software, or other materials will be lost during service and URC will not be responsible for any such damage or loss. A dated purchase receipt, bill of sale, installation contract or other verifiable proof of purchase is required. For the URC equipment support and other important information, please visit URC's website available at www.universalremote.com or call the Customer Service Center at (914) 835-4484.

This limited warranty only covers the URC equipment issues caused by defects in material or workmanship during ordinary consumer use. It does not cover product issues caused by any other reason, including but not limited to product issues due to commercial use, acts of God, third-party installation, misuse, limitations of technology, or modification of or to any part of the URC equipment. This limited warranty does not cover the URC equipment sold as used, as is, refurbished, so called "B stock" or consumables (such as batteries). This limited warranty is invalid if the factory applied serial number has been altered or removed from the URC equipment. **This limited warranty specifically excludes the URC equipment sold by unauthorized resellers.**

With the exception of URC's IR-only, broad-based consumer remotes, none of URC's PC programmable remotes or any of our Total Control® whole-house equipment are authorized for online internet sales. Buying URC's PC programmable remotes or any of our Total Control® whole-house equipment online means buying equipment that does not have a URC's limited warranty. Such equipment is not eligible for URC tech support or software support, either.

2. URC'S Limitations of Liability

IN NO EVENT SHALL URC BE LIABLE FOR INDIRECT, SPECIAL, INCIDENTAL, EXEMPLARY, PUNITIVE OR CONSEQUENTIAL DAMAGES OF ANY KIND OR LOSS OF PROFITS OR BUSINESS OPPORTUNITY, EVEN IF URC IS ADVISED OF THE POSSIBILITY OF SUCH DAMAGES.

IN NO EVENT SHALL URC BE LIABLE FOR LOSS OF OR DAMAGE TO DATA, COMPUTER SYSTEMS OR COMPUTER PROGRAMS. URC'S LIABILITY, IF ANY, FOR DIRECT DAMAGES OF ANY FORM SHALL BE LIMITED TO ACTUAL DAMAGES, NOT IN EXCESS OF AMOUNTS PAID BY END USER FOR THE URC EQUIPMENT.

IN NO EVENT SHALL URC BE LIABLE FOR ANY EVENTS BEYOND ITS CONTROL, INCLUDING ANY INSTANCE OF FORCE MAJEURE.
IN NO EVENT SHALL URC BE LIABLE FOR THE ACTS OR OMISSIONS OF END USER OR ANY THIRD PARTY.

THE LIMITATIONS OF LIABILITY MAY NOT APPLY TO END USER IN WHOLE OR IN PART, WHERE SUCH ARE RESTRICTED LIMITED OR EXCLUDED BY APPLICABLE LAW AND SUCH SHALL APPLY TO THE MAXIMUM EXTENT PERMITTED BY APPLICABLE LAW. URC SHALL NOT BE HELD RESPONSIBLE FOR THE STATEMENTS MADE BY OTHERS.

SOME STATES OR JURISDICTIONS DO NOT ALLOW THE EXCLUSION OR LIMITATION OF INCIDENTAL OR CONSEQUENTIAL DAMAGES, OR ALLOW LIMITATIONS ON HOW LONG AN IMPLIED WARRANTY LASTS, SO THE ABOVE LIMITATIONS OR EXCLUSIONS MAY NOT APPLY TO END USER. THIS LIMITED WARRANTY GIVES END USER SPECIFIC LEGAL RIGHTS AND END USER MAY HAVE OTHER RIGHTS WHICH VARY FROM STATE TO STATE OR JURISDICTION TO JURISDICTION.

End User Agreement

The terms and conditions of the End User Agreement available at www.universalremote.com/eua.php shall apply.

Specifications

CPU : ARM 32-bit Cortex-M3(120MHz)

Memory : 128Kbyte SRAM, 768Kbyte Flash

Macro Capability : Up to 255 steps each

IR Range(Line of Sight via Infrared) : 30 to 50 feet, depending on the environment

RF Range(radio frequency) : 50 to 100 feet, depending upon the environment

Wi-Fi : IEEE 802.11 b/g/n

Weight : 3.0 oz

Size : 3.74" X 2.7" X 1.1"

Power : 12V DC 1A

Federal Communication Commission Interference Statement

This equipment has been tested and found to comply with the limits for a Class B digital device, pursuant to part 15 of the FCC Rules. These limits are designed to provide reasonable protection against harmful interference in a residential installation. This equipment generates, uses and can radiate radio frequency energy and, if not installed and used in accordance with the instructions, may cause harmful interference to radio communications.

However, there is no guarantee that interference will not occur in a particular installation. If this equipment does cause harmful interference to radio or television reception, which can be determined by turning the equipment off and on, the user is encouraged to try to correct the interference by one more of the following measures:

- ◆ Reorient or relocate the receiving antenna.
- ◆ Increase the separation between the equipment and receiver.
- ◆ Connect the equipment into an outlet on a circuit different from that to which the receiver is connected.
- ◆ Consult the dealer or an experienced radio/TV technician for help.

Warning!

Changes or modifications not expressly approved by the manufacturer could void the user's authority to operate the equipment.

Note : The manufacturer is not responsible for any Radio or TV interference caused by unauthorized modifications to this equipment. Such modifications could void the user's authority to operate the equipment.

FCC Caution

This device complies with Part 15 of the FCC Rules. Operation is subject to the following two conditions: (1) this device may not cause harmful interference, and (2) this device must accept any interference received, including interference that may cause undesired operation.

Any changes or modifications not expressly approved by the party responsible for compliance could void the authority to operate equipment.

Federal Communication Commission (FCC) Radiation Exposure Statement

The device and the antenna for this device must be installed to ensure a minimum separation distance of 20 cm more from a person's body. Other operating configurations should be avoided.

Regulatory Information to the user

■ CE conformity Notice

Products with “CE” marking comply with the R&TTE Directive 1995/5/EC, EMC Directive 2004/108/EC and Low Voltage Directive 2006/95/EEC issued by the commission of the European Community.

1) R&TTE Directive

- Safety : EN 60950-1
- EMC : ETSI EN 301 489-1,3, 17
- RF : ETSI EN 300 220-1,2
: ETSI EN 300 328

2) EMC Directive

- Emission: EN 55022
- Immunity: EN 55024
- Power: EN-61000-3-2, 3

3) Low Voltage Directive

- Product safety: EN 60950-1


■ Safety instruction for charging internal rechargeable battery of remote control

Use only with EN60950-1 approved as Limited power source and double insulation() marked power adaptor & same ratings described on the product label (12V DC 1A).

■ Declaration of Conformity

“Hereby, Universal Remote Control Inc. declares that this MRX-4IR is in compliance with the Essential requirements and other relevant provisions of Directive 1999/5/EC.”



Certification	CE 2200
Type No.(Model No.)	MRX-4IR
Batch/Serial No.	-
Power Rating	12V  1.0A
Frequency band	Wi-Fi : IEEE 802.11 b/g/n

Declaration of Conformity

Company Name : Universal Remote Control Inc.
 Company Address : 500 Mamaroneck Avenue, Harrison, NY 10528, U.S.A
 Contact Information : www.universalremote.com
 Phone: (914)835-4484 Fax: (914)835-4532
 Brand Name : UNIVERSAL remote control
 Product Name : Base Station
 Model Name : MRX-4IR

This product herewith complies with the requirements of EMC Directive (2004/108/EC) and R&TTE Directive(1995/5/EC) issued by the Commission of the European Community

Compliance with these directives implies conformity to the following European Community

- EMC Directive
 - EN 55022
 - EN 55024
 - EN 61000-3-2
 - EN 61000-3-3
- R&TTE Directive
 - EN 60950-1
 - ETSI EN 301-489-1,3,17
 - ETSI EN 300 220-1,2
 - ETSI EN 300 328-

List of test reports and/or certificate verified compliance with the standards above

- EMC Directive
 - Report No.
 - Testing Laboratory : Gumi College EMC Center
- R&TTE Directive
 - Certificate No.
 - Certificate Body : SIEMIC Rheinland (No. 2200)

Date of issue : _____ May 30, 2012 _____

Name and signature of authorized person : _____ James Novak _____
 Senior Product Manager
 Universal Remote Control Inc.



500 Mamaroneck Avenue, Harrison, NY 10528

Phone: (914) 835-4484 Fax: (914) 835-4532

www.universalremote.com



OCE-0131A Rev 02