

WatchNET®

Security Since 2000

MegaPixel Camera

XVI

ENHANCED CVI
MegaPixel over UTP/Coax



XVI-40IRBT /XVI-40IRBT-B
4MP D-WDR IR Turret Camera



CE FC



PRO SERIES

4MP HD IR Camera

- ❖ 1/2.7" 4MP HD CMOS image sensor
- ❖ 25/30fps@4MP, 25/30fps@1080P
- ❖ High speed, long distance real-time transmission
- ❖ HD and SD dual-output
- ❖ Day/Night(ICR), AWB, AGC, BLC, 2DNR
- ❖ 2.8mm fixed lens
- ❖ Max. IR LEDs length 50m/164feet, Smart IR
- ❖ IP67, DC12V
- ❖ CVI Compatible Camera

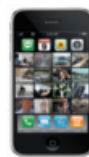
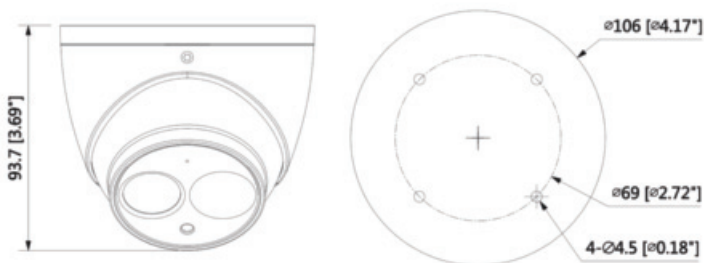


FREE Multisite VMS software
Download from www.watchnetinc.com

Optional Brackets:



BRACK-WM-49 BRACK-BB-43 BRACK-PM-06 BRACK-BB-43-B



iPhone



| Model | XVI-40IRBT / XVI-40IRBT-B |
|--------------------------|--|
| Camera | |
| Image Sensor | 1/2.7" 4MP HD CMOS Image Sensor |
| Effective Pixels | 2560(H) × 1440(V), 4MP |
| Scanning System | Progressive |
| Electronic Shutter Speed | PAL: 1/25~1/100000s / NTSC: 1/30~1/100000s |
| Minimum Illumination | 0.03Lux/F2.0, 30IRE, 0Lux IR on |
| S/N Ratio | More than 65dB |
| IR Distance | Up to 50m (164ft) |
| IR On/Off Control | Auto / Manual |
| IR LEDs | 1 |
| Lens | |
| Lens Type | Fixed lens / Fixed iris |
| Mount Type | Board-in |
| Focal Length | 2.8mm fixed |
| Max Aperture | F2.0 |
| Angle of View | H: 76.4° (97°/48.6°) / V: 41.6° (52°/27.9°) |
| Focus Control | N/A |
| Close Focus Distance | 1400mm (800mm/2500mm) / 55.1" (31.5"/98.4") |
| Video | |
| Resolution | 4MP (2560×1440) |
| Frame Rate | 25/30fps@4MP, 25/30fps@1080P |
| Video Output | 1-channel BNC high definition video output / CVBS video output (Can switch) |
| Day/Night | Auto (ICR) / Manual |
| OSD Menu | Multi-language |
| BLC Mode | BLC / HLC / D-WDR |
| WDR | D-WDR |
| Gain Control | AGC |
| Noise Reduction | 2D |
| White Balance | Auto / Manual |
| Smart IR | Auto / Manual |
| Interface | |
| Audio Interface | N/A |
| Electrical | |
| Power Supply | 12V DC ±30% |
| Power Consumption | Max. 3.9W (12V DC, IR on) |
| Environmental | |
| Operating Conditions | -40°C ~ +60°C (-40°F ~ +140°F) / Less than 90% RH * Start up should be done at above -40°C (-22°F) |
| Storage Conditions | -40°C ~ +60°C (-40°F ~ +140°F) / Less than 95% |
| Ingress Protection | IP67 |
| Construction | |
| Casing | Aluminum |
| Dimensions | Φ106mm×93.7mm (Φ4.17"×3.69") |
| Net Weight | 0.42kg (0.93lb) |
| Gross Weight | 0.55kg (1.21lb) |

All logos & trade marks represent the registered users only. All rights reserved.
All product specifications on this brochure are subject to change without notice.

CANADA:
351 Ferrier Street, Unit 5
Markham, ON L3R 5Z2
Toll Free: 1-866-843-6865
Tel: 416-410-6865

USA:
171 Cooper Ave. Suite 110
Tonawanda, NY 14150 USA
Toll Free: 1-866-843-6865
Local: 1-716-877-7277

UAE:
P O Box No 126312
Office Suite 703
Oxford Towers, Business Bay
Dubai, UAE
Tel: + 971 4 2767117

Rev Aug 10, 2020

info@watchnetinc.com
www.watchnetinc.com