

# DCN-SW Conference Software Main Module

www.boschsecurity.com



**BOSCH**  
Invented for life



- ▶ Meeting & Agenda
- ▶ User management
- ▶ Client server solution
- ▶ Optimized for Microsoft Windows 7
- ▶ Off-line configuration

The DCN-SW Conference Software Main Module is used as a platform on which all other software modules run. Basic functions are included where others can be added depending on the functionality required.

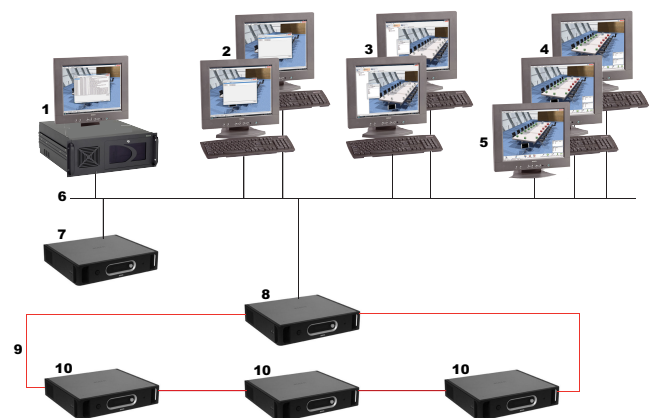
## System overview

The DCN-SW Conference Software Main Module is build as a client server solution and consists of four software components:

- The server provides management, control and monitoring of the DCN Next Generation System or DCN Wireless Discussion system.
- The configuration application provides system installation and meeting preparation.
- The operator application provides system monitoring and meeting control.
- The print application provides printing of voting results.

All DCN-SW applications can, but not necessary need to be run on separate computers and integrate seamlessly with each other. This allows the possibility for assigning functionality to different users and/or PCs – for instance, let one or more users configure the set-up and register delegates (configuration application), and another person actually control the

meeting on a separate pc (operator application). Contextual help file provides instant support for all applications.



1	DCN-SW Server
2	Vote results print application
3	Remote Configuration application
4	Remote Operator application (Multi PC license required)

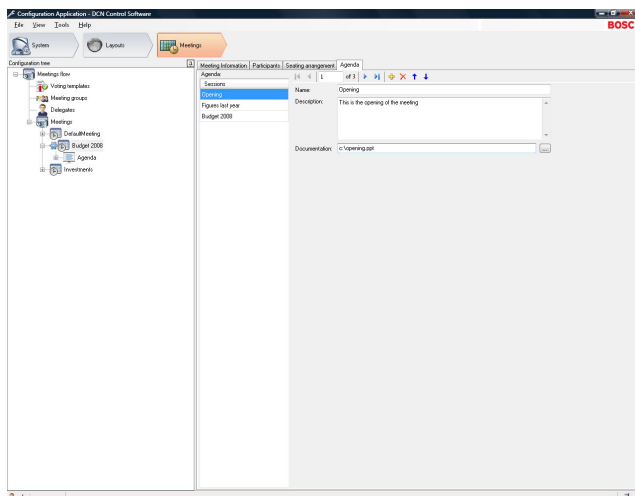
5	Touch screen
6	Ethernet connections
7	CCU2 (single)
8	CCU2 (master)
9	Bosch optical network
1	CCU2 (slave)
0	

## Functions

### The server

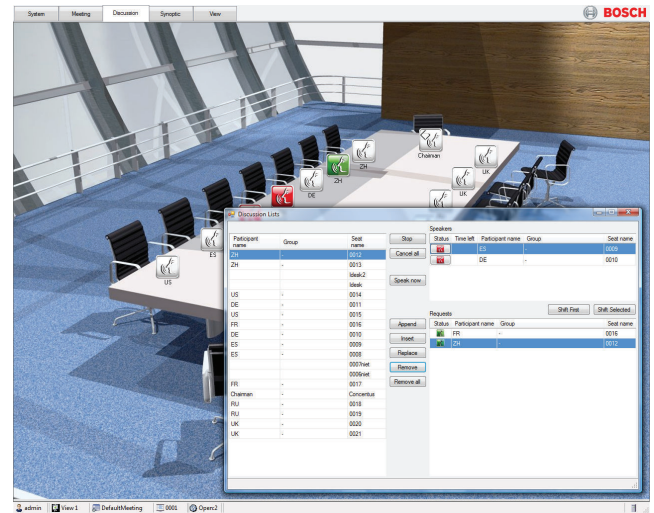
- Monitor and control of the conference data.
- It runs on the background and links all applications.
- SQL database stores all data and settings.
- Status report of database connection and system connection.
- Error logging for quick diagnostics.

### Configuration application



- Easy step-by-step pre-configuration which makes it exceptionally ergonomic.
- Off-line system configuration.
- Administrator user management: defining users and user groups with group privileges like view- and control rights.
- Installer system setup: defining seats and synoptic layouts.
- Operator meeting preparation: voting templates, participating delegates, authorizations for each meeting, the agenda, lists of speakers and voting scripts.

### Operator application



- Full meeting control.
- Touch screen optimized.
- Ribbon technology giving the user a graphical representation of all main functions, which makes it very intuitive to use.
- Functionality depending on user rights and system license.
- Synoptic microphone control, voting results, Individual microphone sensitivity control, battery status and signal status.
- Ergonomically designed synoptic shapes and shadings help the color-impaired people to distinguish different statuses.
- Quick-links to jump instantaneously to configuration application to make adjustment to the pre-configuration.

### Print application

- Automatic printing of voting results

## Installation/configuration notes

### License

DCN-SW is license activated and comes with an authorization code which includes synoptic control with basic microphone control functionality. Activation is done via the license website.

The configuration application can be used independent of the additional licenses as where the operator application does need the license to control the conference system.

Running the operator application on a separate PC requires DCN-SWMP.

## Parts included

Quantity	Component
1	DVD includes:

	DCN-SW Conference Software Main module
	Authorization code including synoptic control
	Setup wizard that can selectively install all components (Server-, Configuration-, Operator- and Print- application) in all supported languages

### Technical specifications

Maximum number of client PCs	20
Supported operating system	Windows 7 Home Premium (32 and 64 bits) or above or Windows Vista Home Premium(32 or 64 bits) or above All with the latest service packs and updates.
Required open TCP port for client PCs	9461
PC requirements	
Single CCU	Dual core processor (2.66 GHz) and 2 GBytes internal memory for single PC systems and for the server PC in multi PC systems. Dual core processor (2.66 GHz) and 1 GBytes internal memory for client PC's in multi PC systems.
Multi CCU	Quad core processor (2.40 GHz) and 2 GBytes internal memory for single PC systems and for the server PC in multi PC systems. Dual core processor (2.66 GHz) and 1 GBytes internal memory for client PC's in multi PC systems.

### Ordering information

#### DCN-SW Conference Software Main Module

A platform on which all other Conference software modules run.

Order number **DCN-SW**

#### Software Options

#### DCN-SW-E Conference Software Main Module E-code

A platform on which all other Conference software modules run. Electronic authorization code.

Order number **DCN-SW-E**

#### Represented by:

##### Americas:

Bosch Security Systems, Inc.  
12000 Portland Avenue South  
Burnsville MN 55337, USA  
Phone: +1-800-392-3497  
Fax: +1-800-955-6831  
audiosupport@us.bosch.com  
www.boschsecurity.com

##### Europe, Middle East, Africa:

Bosch Security Systems B.V.  
P.O. Box 80002  
5617 BA Eindhoven, The Netherlands  
Phone: + 31 40 2577 284  
Fax: +31 40 2577 330  
emea.securitysystems@bosch.com  
www.boschsecurity.com

##### Asia-Pacific:

Robert Bosch (SEA) Pte Ltd, Security Systems  
11 Bishan Street 21  
Singapore 573943  
Phone: +65 6571 2808  
Fax: +65 6571 2699  
apr.securitysystems@bosch.com  
www.boschsecurity.asia

##### China:

Bosch (Shanghai) Security Systems Ltd.  
201 Building, No. 333 Fuquan Road  
North IBP  
Changning District, Shanghai  
200335 China  
Phone +86 21 22181111  
Fax: +86 21 22182398  
www.boschsecurity.com.cn

##### America Latina:

Robert Bosch Ltda Security Systems Division  
Via Anhanguera, Km 98  
CEP 13065-900  
Campinas, Sao Paulo, Brazil  
Phone: +55 19 2103 2860  
Fax: +55 19 2103 2862  
al.securitysystems@bosch.com  
www.boschsecurity.com