



S IB9391-EHT

Bullet Network Camera



8MP 30fps • 2MP 120fps • SNV • WDR Pro •
Smart Stream III • 50M IR • IP67 • IK10 • NEMA 4X

The IB9391-EHT is the new flagship outdoor bullet network camera from VIVOTEK, equipped with a 4K ultra HD sensor capable of 3840x2160 resolution at 30 fps. With the latest in VIVOTEK WDR Pro technology, the IB9391-EHT is capable of capturing the highest quality images in high contrast environments.

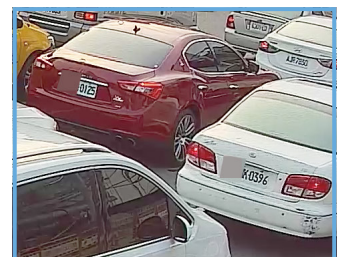
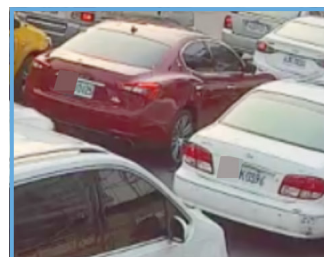
Stream III technology and H.265 compression codec, reducing bandwidth more than 90%* while still maintaining excellent image quality. Protecting all these features is the IB9391-EHT's IP66, IP67, IK10 and NEMA 4X certified housing, capable of operating in temperatures from -50°C to 60°C.

The IB9391-EHT also supports standard 1920x1080 HD resolution at 120 frames per second, capable of catching very fast moving objects. Additionally, the IB9391-EHT employs VIVOTEK's Smart

* Depending on the scene

Key Features

- H.265 Compression Technology
- 30 fps @ 3840x2160 (WDR Pro on)
- 120 fps @ 1920x1080 (WDR Pro off)
- Smart Stream III to Optimize Bandwidth Efficiency
- Built-in IR Illuminators, Effective up to 50 Meters
- Smart IR II Technology to Avoid Overexposure
- WDR Pro for Unparalleled Visibility in Extremely Bright and Dark Environments
- SNV (Supreme Night Visibility) for Low Light Conditions
- Weather-proof IP66/IP67, Vandal-proof IK10 and NEMA 4X-rated Housing
- -50°C ~ 60°C Wide Temperature Range for Extreme Weather Conditions (IR Off)
- Trend Micro IoT Security
- Smart Motion Detection to Reduce False Alarms



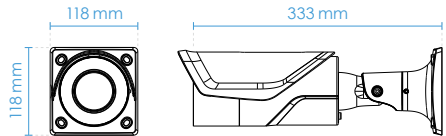
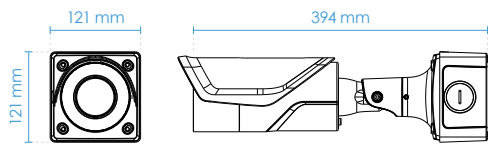
2MP Resolution

4K Resolution

Technical Specifications

Model	IB9391-EHT		
System Information			
CPU	Multimedia SoC (System-on-Chip)		
Flash	128 MB		
RAM	1 GB		
Camera Features			
Image Sensor	1/2" Progressive CMOS		
Max. Resolution	3840x2160 (8MP)		
Lens Type	Motorized, Vari-focal, Remote Focus		
Focal Length	f = 3.9 ~ 10 mm		
Aperture	F1.5 ~ F2.7		
Iris type	P-iris		
Field of View	95° ~ 45° (Horizontal) 52° ~ 25° (Vertical) 111° ~ 52° (Diagonal)		
Shutter Time	1/5 sec. to 1/32,000 sec.		
WDR Technology	WDR Pro		
Day/Night	Yes		
Removable IR-cut Filter	Yes		
Illuminators	Built-in IR illuminators, effective up to 50 meters with Smart IR II, IR LED*5		
Minimum Illumination	0.02 lux @ F1.5 (Color) <0.01 lux @ F1.5 (B/W) 0 lux with IR illumination on		
Tilt Range	90°		
Rotation Range	180°		
Pan/Tilt/Zoom Functionalities	ePTZ: 48x digital zoom (4x on IE plug-in, 12x built in)		
Storage	Seamless Recording to MicroSD/SDHC/SDKC card and recording to network-attached storage (NAS)		
Built-in Installation Aids	Remote focus, remote zoom		
Video			
Compression	H265, H264, MJPEG		
Maximum Frame Rate	30 fps @ 3840x2160 120 fps @ 1920x1080		
Maximum Streams	3 video streams (Up to 8 configurable profiles)		
S/N Ratio	61 dB		
Dynamic Range	120 dB		
Video Streaming	Adjustable resolution, quality and constant bit rate control, Smart Stream III		
		Image Settings	General settings: video title and time stamp overlay, video orientation (flip, mirror, rotation), day/night settings; Illuminators: illuminators, anti-overexposure; Image settings: white balance, image adjustment (brightness, contrast, saturation, sharpness, gamma curve), defog, 3DNR, HLM, DIS, scene mode (auto, deblur); Exposure: BLC, HLC, exposure control (exposure level, iris adjustment, exposure time, gain control, iris mode), AE speed adjustment, WDR; Focus: zoom, focus; Privacy mask; Scheduled profile settings
		Audio	
		Audio Capability	Two-Way Audio (full duplex)
		Compression	G.711, G.726
		Interface	External microphone input External line output
		Network	
		Users	Live viewing for up to 10 clients
		Security	Access list, digest authentication, HTTPS, IEEE 802.1x, password protection, signed firmware, Trend Micro IoT Security (brute force attack event, cyberattack event, quarantine event), user access log, user account management
		Protocols	802.1X, ARP, Bonjour, CIFS/SMB, DDNS, DHCP, DNS, FTP, HTTP, HTTPS, ICMP, IGMPv3, IPv4, IPv6, NTCIP, NTP, PPPoE, QoS (CoS/DSCP), RTSP/RTP/RTCP, SMTP, SNMP, SSL, TCP/IP, TLS 1.2, UDP, UPnP
		Interface	10 Base-T/100 Base-TX Ethernet/1000 Base-T (RJ-45) *It is highly recommended to use standard CAT5e & CAT6 cables which are compliant with the 3P/ETL standard.
		ONVIF	Profile G, S, T supported, specification available at www.onvif.org
		Solution Integration	
		Smart Motion Detection	Five-window video motion detection, people detection, time filter
		Smart VCA	Intrusion detection, loitering detection, line crossing detection, unattended object detection, missing object detection, face detection, crowd detection, running detection
		VADP Package	Deep Learning VCA (Smart Motion Detection, Smart VCA), Trend Micro IoT Security (3-year free trial)
		Alarm and Event	
		Event Trigger	Audio detection, camera tampering detection, cybersecurity events (brute force attack event, cyberattack event, quarantine event), digital input, manual trigger, motion detection, periodical trigger, recording notification, SD card life expectancy, shock detection, system boot
		Event Action	Event notification via audio clip, digital output, email, HTTP, FTP, NAS server, SD card File upload via email, HTTP, FTP, NAS server, SD card

Technical Specifications

General		System Requirements	
Connectors	RJ-45 cable connector for 10/100/1000 Mbps PoE network connection Audio line input Audio line output DC 12V power input AC 24V power input Digital input Digital output	Operating System	Microsoft Windows 10/8/7 Mac 10.12 (Chrome only)
LED Indicator	System power and status indicator	Web Browser	Chrome 58.0 or above Internet Explorer 10/11
Power Input	IEEE 802.3at Class 4 PoE, DC 12V, AC 24V (Simultaneous Power Redundancy Supported)	Other Players	VLC: 1.1.11 or above
Power Consumption	PoE : Max. 24.8 W DC 12V: Max. 21 W AC 24V: Max. 23.4 W	Included Accessories	
Dimensions	121 x 121 x 394 mm (w/ junction box) 118 x 118 x 333 mm (w/o junction box)	Packing Contents	Quick installation guide, alignment sticker, screw pack, desiccant bag, waterproof accessory bag, sunshield, junction box
Weight	2.2 kg (w/ junction box) 1.8 kg (w/o junction box)	* For USA and Canada markets, the junction box (AM-719) is not included.	
Certifications	EMC: CE (EN 55032 Class A, EN55024), FCC (FCC Part 15 Subpart B Class A), RCM (AS/NZS CISPR 32 Class A), VCCI (VCCI-CISPR 32 Class A); Safety: UL (UL 62368-1), CB (IEC/EN 62368-1, IEC/EN 60950-22, IEC/EN 62471); Environment: IK10 (IEC 62262), IP66/67 (IEC 60529), NEMA (NEMA 250 Type 4X); IA: BIS (IS 13252)	Dimensions	
Operating Temperature	Starting Temperature: -40°C ~ 60°C (-40°F ~ 140°F) Working Temperature: -50°C ~ 60°C (-58°F ~ 140°F) (IR off) -50°C ~ 50°C (-58°F ~ 122°F) (IR on)	w/o Junction Box	
Humidity	95%		
Warranty	36 months	w/ Junction Box	
			

Compatible Accessories

Mounting Kits



AM-719*
Junction Box (Standard Package)



AM-312
Pole Mount Adapter



AM-412
Corner Mount Adapter

*For USA and Canada markets, the junction box (AM-719) is not included.