



IP816A-LPC-v2 Kit

License Plate Capture Solution

Dual Lanes · Anti-Glare · 85MPH (140 km/hr) · Scene Overview ·
Recognition Distance 20M · Remote Back Focus · DIS · CVA Tech

VIVOTEK's IP816A-LPC-v2 Kit represents a total solution for LPC (License Plate Capture) applications by leveraging the top tier image quality and traffic monitoring ability of the IP816A-LPC box camera. The CaMate IR Illuminator utilizing CVA Tech provides adjustable beam angles for different distances. An headlight filter is implemented to reduce instances of glare from direct headlight contact. The IP816A-LPC-v2 Kit delivers clear license plate images for reliable recognition, in both the sunniest days, and in the darkest nights.

Empowered with VIVOTEK Scene Mode, which provides different exposure levels to avoid overexposure in some lighting

conditions, the IP816A-LPC-v2 Kit can capture clear plate images from the vehicles moving at speeds of up to 85MPH (140 km/hr).

Value-added features such as DIS (Digital Image Stabilization) and VIVOTEK Snapshot Focus ensure that the IP816A-LPC-v2 Kit can be easily installed and adjusted to provide the perfect LPR solution. Further, with the high-resolution images supporting a wide range of up to two lanes, the IP816A-LPC-v2 Kit is also the most economic solution in LPR applications.

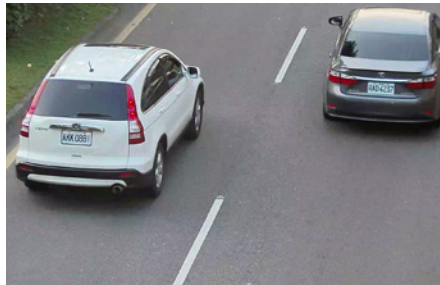
Key Features

- One Camera Covers Both Scene Overview & LPC View
- Supreme Anti-Glare Capability
- One Camera Covers Dual Lanes
- Easy Installation and Low Maintenance
- VIVOTEK Snapshot Focus, RBF, and DIS to Support Traffic Monitoring Applications
- CaMate IR Illuminator with CVA Tech (Continuous Variable Angle Technology)
- Vandal-Proof IK10-rated and Weather-Proof IP68-rated Housing

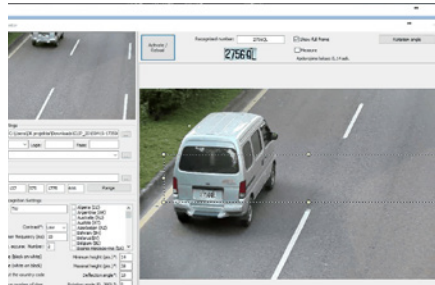
Functions

One Camera Covers Both Scene Overview & LPC View

VIVOTEK's 2 Mega-pixel resolution kit provides not only sufficient PPF for license plate capture, but also for a clear overview of moving vehicles, including car color, brand and type for general traffic surveillance purposes. Therefore, with only one VIVOTEK IP816A-LPC-v2 Kit, users can yield more information from one single location.



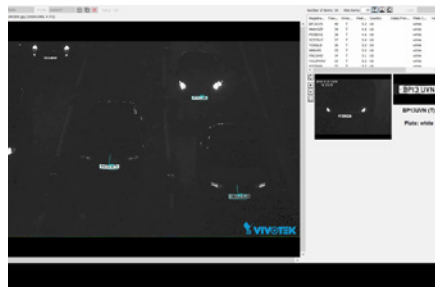
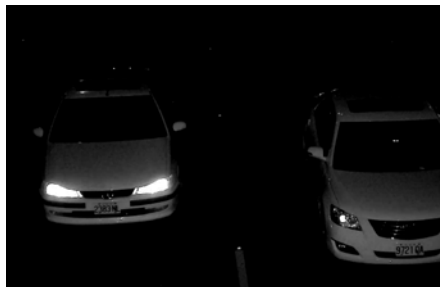
Scene Overview



License Plate Recognition View

Supreme Anti-Glare Capability

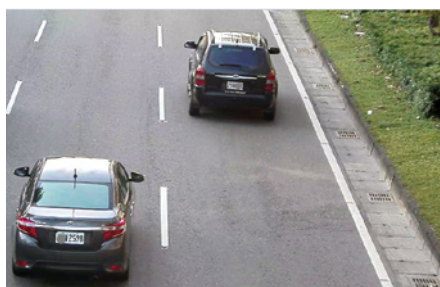
Capturing images at night is a challenging issue for any surveillance application, but for License Plate Capture applications the challenge is even greater due to noise and glare caused by the headlights of cars. The IP816A-LPC-v2 Kit is equipped with external 48W/80W IR Illuminators and a delicate headlight filter, which help to filter out reflected light and only capture detailed information from the plates. Moreover, the IR threshold is also programmed to deploy the IR Illuminator automatically to ensure 24/7 & Day/Night performance.



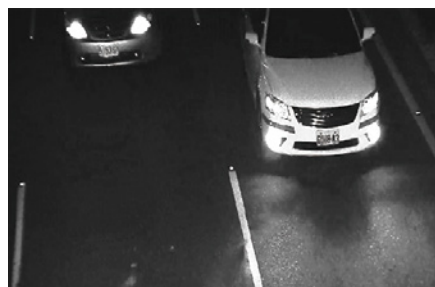
Clear Image Captured with IR Illuminators and Headlight Filter

One Camera Covers Dual Lanes

The high image quality of the IP816A-LPC-v2 Kit ensures wide coverage of two lanes with one Camera, whether used for Highway monitoring or for Street monitoring. With a single IP816A-LPC-v2 Kit covering dual lanes, the total cost of traffic monitoring will be reduced.

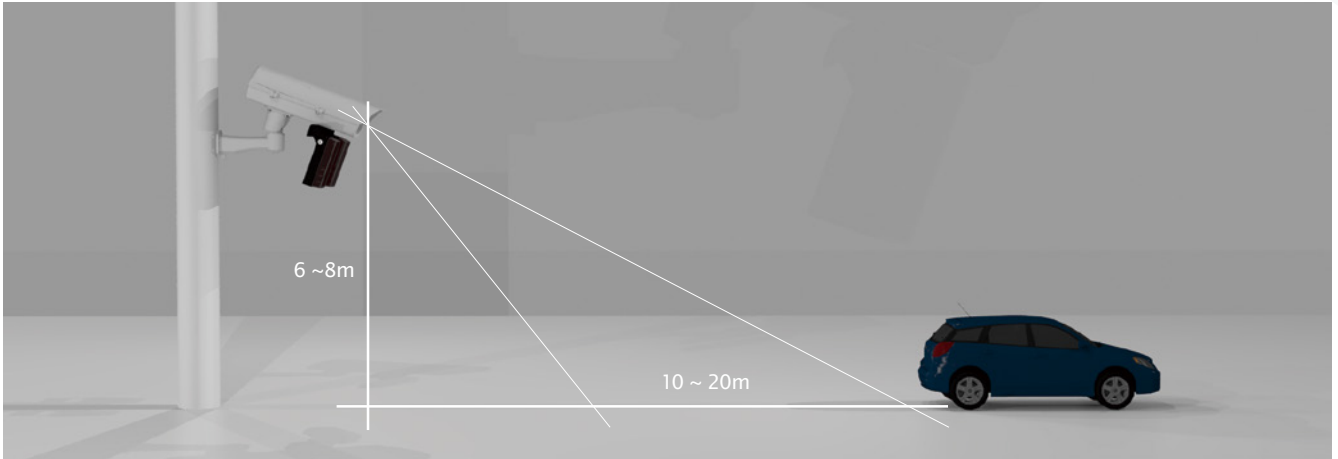


Day Time









Night Time

Suggested Installation



Ordering Information



Kit	IP816A-LPC-v2 Kit (Highway)	IP816A-LPC-v2 Kit (Street)
P/N.	199002900G	199002800G
Category	Model/Description	
IP Camera	 <p>IP816A-LPC (Highway) 2MP, 60fps, WDR Pro, Remote Back Focus, 3DNR, DIS, Snapshot Focus</p>	 <p>IP816A-LPC (Street) 2MP, 60fps, WDR Pro, Remote Back Focus, 3DNR, DIS, Snapshot Focus</p>
IR Illuminator	 <p>CM8018-2040 80W IR Illuminator, 850nm, 20° ~ 40° adjustable beam angle with CVA Tech</p>	 <p>CM4818-2040 48W IR Illuminator, 850nm, 20° ~ 40° adjustable beam angle with CVA Tech</p>
Enclosure	 <p>AE-23L Outdoor Enclosure with Anti-Icing Heated Glass, Fan, AC24V or DC24V in, IP68, IK10, Sun shield, 80W surge protect</p>	
Bracket	 <p>AM-21E Cable Management, Wall Mount Bracket</p>	

Technical Specifications

IP816A-LPC-v2 Kit	
Model	IP816A-LPC-v2 Kit (Highway) IP816A-LPC-v2 Kit (Street)
Max. Speed	Highway: 85MPH (140 km/hr) Street: 60MPH (90 km/hr)
IR Threshold	IR on: 300 Lux IR off: 600 Lux RS485 configurable
Shutter Time	Highway: 1/1,600 to 1/10,000 sec. Street: 1/800 to 1/10,000 sec.
Max. Shutter Time	1/5 to 1/10,000 sec.
IR Illuminators	Highway: 80W, 20° ~ 40° adjustable x 1 Street: 48W, 20° ~ 40° adjustable x 1
Capture Range	Up to 20 meters
Captured Lanes	Dual Lanes
Power Input	AC24V or DC24V
Power Consumption	Highway: Max. 110W (AC24V/DC24V), Suggested Power: AC24V or DC24V/5A Street: Max. 78W (AC24V/DC24V), Suggested Power: AC24V or DC24V/3.5A
Weight	6,482 g
Housing	Weather-proof IP68-rated housing Vandal-proof IK10-rated housing
Operating Temperature	Starting Temperature: 0°C ~ 60°C (32°F ~ 140°F) Working Temperature: -20°C ~ 60°C (-4°F ~ 140°F) -40°C ~ 60°C (-40°F ~ 140°F), with optional cold start heater
Humidity	90%
Video	
Compression	H.264 & MJPEG
Maximum Streams	2 simultaneous streams
Image Settings	Time stamp, text overlay, flip & mirror; Configurable brightness, contrast, saturation, sharpness, white balance, exposure control, gain, backlight compensation, privacy masks, scheduled profile settings; 3D noise reduction, DIS, video rotation, snapshot focus, scene mode
Network	
Users	Live viewing for up to 10 clients
Protocols	IPv4, IPv6, TCP/IP, HTTP, HTTPS, UPnP, RTSP/RTP/RTCP, IGMP, SMTP, FTP, DHCP, NTP, DNS, DDNS, PPPoE, CoS, QoS, SNMP, 802.1X, UDP, ICMP, ARP, SSL, TLS
Interface	10Base-T/100BaseTX Ethernet (RJ-45) *It is highly recommended to use standard Cat. 5e & Cat. 6 cables which are compliant with the 3P/ETL standard.
ONVIF	Supported, specification available at www.onvif.org
Intelligent Video	
Video Motion Detection	Triple-window video motion detection
Alarm and Event	
Alarm Triggers	Motion Detection, manual trigger, digital input, periodical trigger, system boot, recording notification, camera tampering detection, audio detection, IR Status
Alarm Events	Event notification using digital output, HTTP, SMTP, FTP, NAS server and SD Card File upload via HTTP, SMTP, FTP, NAS server and SD card
General	
Smart Focus System	RBF (Remote Back Focus)
IP Camera Connectors	RJ-45 for Network/PoE connection AC24V or DC12V power input Digital input*3 Digital output*1
Safety Certifications	IP Camera: CE, LVD, FCC Class B, VCCI, C-Tick, UL
Warranty	36 months
System Requirements	
Operating System	Microsoft Windows 8/7/Vista/XP/2000
Web Browser	Mozilla Firefox 7~43 (streaming only) Internet Explorer 7/8/9/10/11
Other Players	VLC: 1.1.11 or above QuickTime: 7 or above
Dimensions	

Technical Specifications

Network Camera		IR Illuminator	
Model	IP816A-LPC (Highway) IP816A-LPC (Street)	Model	CM8018-2040: Highway, 80W, 20° ~ 40° adjustable CM4818-2040: Street, 48W, 20° ~ 40° adjustable
CPU	Multimedia SoC (System-on-Chip)	Max. Distance	CM8018-2040: 170 ~ 280 meters CM4818-2040: 120 ~ 200 meters
Flash	256 MB	Beam Angle	20° ~ 40° adjustable
RAM	384 MB	Input Power	CM8018-2040: 24VDC ±10%, 24VAC(50/60Hz) ±10% CM4818-2040: 12~24VDC ±10%, 24VAC(50/60Hz) ±10%
Camera Features		Power Consumption	CM8018-2040: 80W CM4818-2040: 48W
Image Sensor	1/1.9" Progressive CMOS	Weight	2,100 g
Maximum Resolution	1920x1080 (2MP)	Housing	Weather-proof IP68-rated housing Vandal-proof IK10-rated housing
Lens Type	Vari-focal	Operating Temperature	-50°C ~ 60°C (-58°F ~ 140°F)
Focal Length	f = 12 ~ 40 mm	Color	Black
Aperture	F2.36 ~ F2.44	Wavelength	850nm
Auto-iris	P-iris (DC-iris reserved)	Dimensions	220 x 160 x 73 mm (8.6 x 6.3 x 2.9 inch)
Field of View	10.2° ~ 30° (Horizontal) 8° ~ 22° (Vertical) 12° ~ 38° (Diagonal)	Included Accessories	U-Type Bracket (134 x 34 x 81.5 mm)
WDR Technology	WDR Pro (Default: Off)	Certifications	CE, FCC, IEC
Day/Night	Removable IR-cut filter for day & night function	Integrated Control	Built-in photocell for automatic IR on/off
Pan/Tilt/Zoom Functionalities	ePTZ: 48x digital zoom (4x on IE plug-in, 12x built in)		
On-board Storage	Slot type: SD/SDHC/SDXC card slot		
Video			
Maximum Frame Rate	30 fps @ 1920x1080 60 fps @ 1920x1080 (In one-stream mode only) (In both compression mode)		
S/N Ratio	50.8 dB		
Dynamic Range	100 dB		
Audio			
Audio Capability	Two-way audio (full duplex)		
Compression	AAC, G.711, G.726		
Interface	External microphone input Audio output		

Compatible Accessories

Lens



AL-239
8 ~ 80 mm, F1.6, DC-iris



AL-24A
12 ~ 40mm, F1.8, P-iris
(Standard Package)



AL-24B
3.6 ~ 17 mm, F1.5,
P-iris

Others

Brackets



AM-314
Pole mount bracket



AM-315
Pole mount bracket

Power Supply



HLG-120H-24
120W Single Output
Switching Power
Supply, DC24V

Power Box



AA-351
Outdoor power box,
IP67, IK10



AA-352
Outdoor power box,
IP67, IK10