

EP499 Series

Explosion Proof Exit Switches



Specifically designed for applications where flammable vapors are cause for concern, like clean room, chemical plant, or refinery environments by eliminating the sparks or arc in the exit switch.

For use in hazardous and corrosive environments.

Class I, Zone 1, AEx de IIC T6...T4 Gb / Ex de IIC T6...T4 Gb X

Zone 21, AEx tb IIC T85°C...T135°C Db IP66 / Ex tb IIC T85°C...T135°C Db IP66 X

Class I, Division 2, Groups A, B, C, D

Class II, Division 2, Groups E, F, G

Class III UL50, 50E, 508, UL60079-0, -1, -7, -31 Type 3, 4, 4X, 12, 13

FEATURES

- Impact Resistant Non-Metallic Antistatic Material
- No moving parts, virtually maintenance free
- Corrosion Proof with F1 UV Protection
- 1.5" Mushroom Button (Green or Red)
- Silicone Gasket on Enclosure and Actuator
- Explosion Protected Contact Blocks
- Clearance for 3/4" Bottom Feed NPT Fitting
- Classified for Hazardous Locations

Model: HKH1AN (File E53360)

APPLICATIONS

- Chemical Plants
- Refineries
- Paint Shops
- Cleaning Facilities
- Loading Facilities for flammable gases
- Hazardous Material Storage Facilities

MODELS

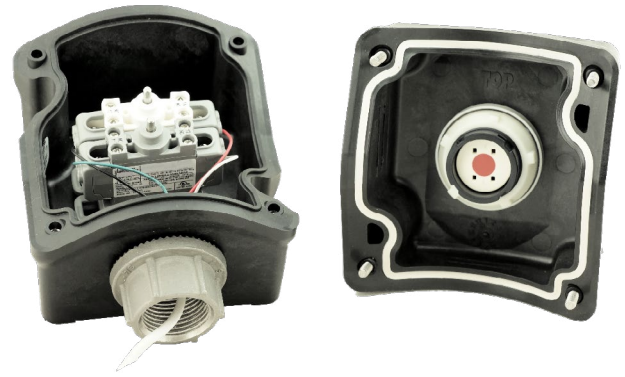
EP499 Explosion Proof Exit Switch
(specify Green or Red Button)





SPECIFICATIONS

Dimensions	3.95 W x 4.21 H x 4.16" D
Contact	1 N.O. and 1 N.C., momentary
IEC Rating	DC60V 5A DC-13
Operating Temperature	-50° C to 60° C



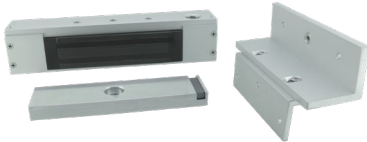
ACCESSORIES



602RF 1 Amp, class 2 output Power Supply with optional controller and batteries



EP17624 Explosion Proof Magnetic Lock with conduit on sideblock



EP17624TJ Explosion Proof Magnetic Lock with conduit on top panel, includes Top Jamb mounting bracket



EP493 Explosion Proof Door Release

System Components Considerations

