

Electromagnetic Lock Mounting Brackets

“Z” Brackets

- E-941S300R/ZQ* (for E-941SA-300RQ)
- E-941S-600/ZQ (for 600-lb series)
- E-941S-1K2/ZQ (for 1,200-lb series)

Includes one “Z” bracket and one “L” bracket for mounting on in swinging doors. Adjustable for flexible positioning of armature plate.

SECO-LARM “Z” brackets are adjustable.

“L” Brackets

- E-941S300R/LQ* (for E-941SA-300RQ)
- E-941S-600/LQ (for 600-lb series)
- E-941S-1K2/LQ (for 1,200-lb series)

Plate Spacers

- E-941S-300/PQ* (for E-941SA-300)
- E-941S300R/PQ* (for E-941SA-300RQ)
- E-941S-600/PQ (for 600-lb series)
- E-941S-1K2/PQ (for 1,200-lb series)
- E-941D-600/PQ* (for 600-lb double-door series)
- E-941D-1K2/P* (for 1,200-lb double-door series)

“U” Brackets -- Glass Door

- E-941S300R/UQ* (for E-941SA-300RQ)
- E-941S-600/UQ (for 600-lb series)
- E-941S-1K2/UQ (for 1,200-lb series)

Adjustable for 9~13 mm glass.

Armature Plate Holders

- E-941S-600/HQ (for 600-lb series)
- E-941S-1K2/HQ (for 1,200-lb series)

Armature Plates

- E-941S-300/AP* (for 300-lb series)
- E-941S-600/AP* (for 600-lb series)
- E-941S-1K2/AP* (for 1,200-lb series)

For 600-lb Series



E-941S-600/ZQ



E-941S-600/LQ
9⁷/₈"x1¹³/₁₆"x1¹⁵/₁₆"



E-941S-600/PQ
9⁷/₈"x1"x2³/₁₆"

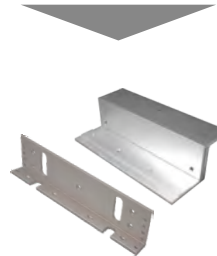


E-941S-600/UQ



E-941S-600/HQ

For 1,200-lb Series



E-941S-1K2/ZQ



E-941S-1K2/LQ
10¹/₂"x1¹/₂"x3"



E-941S-1K2/PQ
10¹/₂"x1³/₈"x¹/₄"

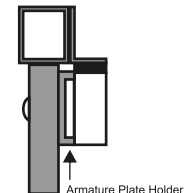
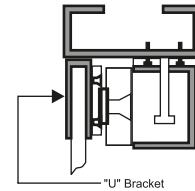
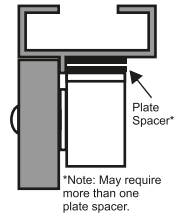
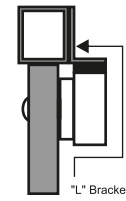
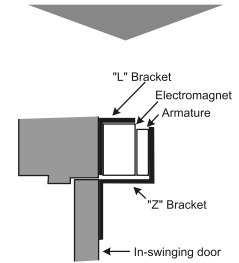


E-941S-1K2/UQ



E-941S-1K2/HQ

Mounting Diagrams



*Not shown.