

DS-K4T100

Electric Bolt

- Internal Voltage Dependent Resistor (MOV)
- Smart One-Chip
- Delay Duration Can Be Set: 0/3/6/9s
- Alloy and Stainless Steel

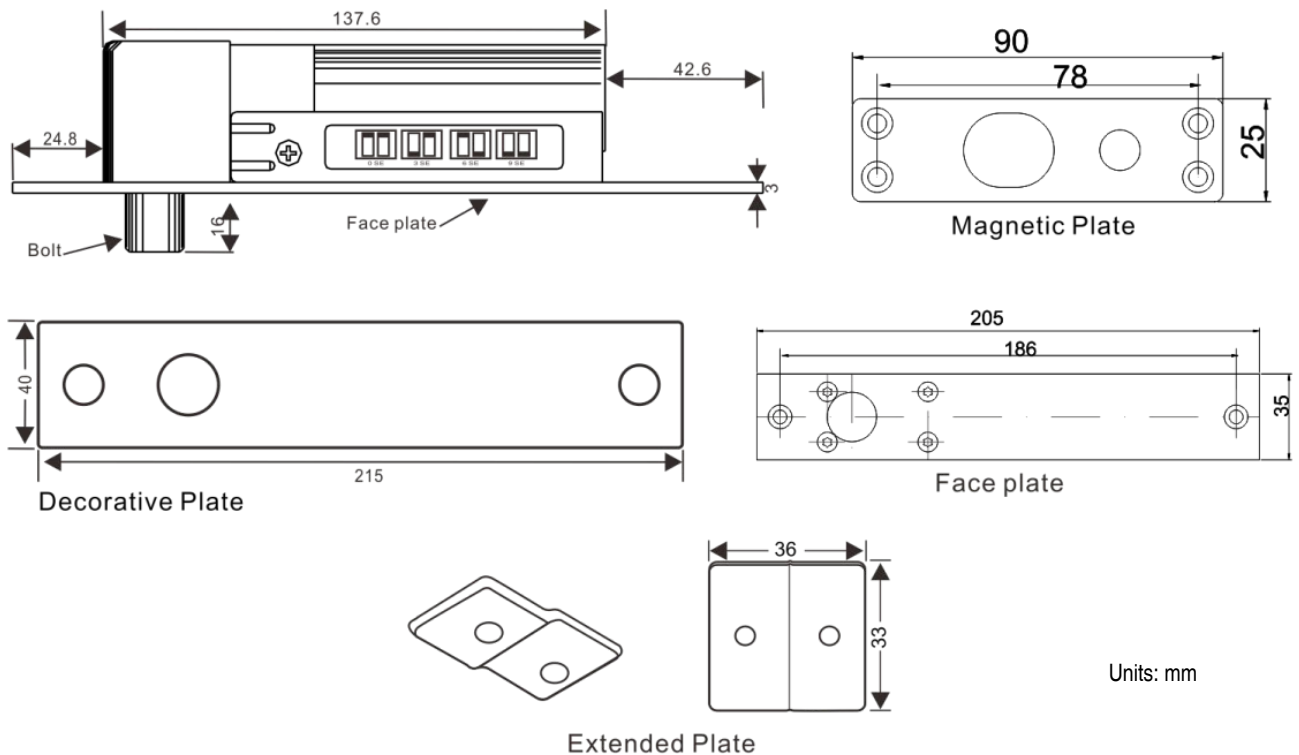
The DS-K4T100 electric bolt is designed for normal glass doors, wooden doors, and metal doors. A variety of products and accessories are available for frameless glass doors and narrow doors (opens both sides). It is designed with special photoelectric control and features ultra-cold and ultra-low consumption.

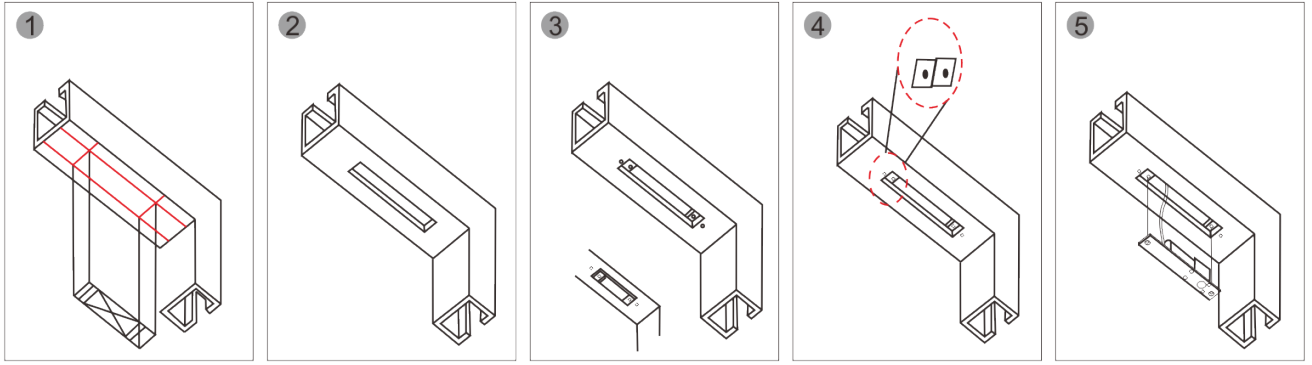
Available Models: DS-K4T100



	DS-K4T100
Plate Dimensions (l x w x h)	8.07" x 1.38" x 1.57" (205 mm x 35 mm x 40 mm)
Strike Dimensions (l x w x h)	3.54" x 0.98" x 0.07" (90 mm x 25 mm x 2 mm)
Bolt Dimensions	0.63" x 0.63" (16 mm x 16 mm)
Bolt Performance	Supports 800 kg thrust
Bold Finish	Polished and brushed stainless steel
Input Voltage	12 VDC +10%
Working Current	900 mA (startup current), 100 mA (standby)
Secure	Power off for unlocking
Signal Output	Signal output NC, COM contact of door-status
Suitable Doors	Wooden doors, glass doors, metal doors, fireproof doors
Delay Duration	0/3/6/9s optional
Magnetic Induction Distance	0.31" (8 mm)
Working Temperature	14° to 131° F (-10° to +55° C)
Working Humidity	0 to 95% relative humidity
Lifetime	500,000 times of locking operation
Weight	1.54 lb (0.7 kg)

Dimensions





1 Place lock body template to match with door frame center line

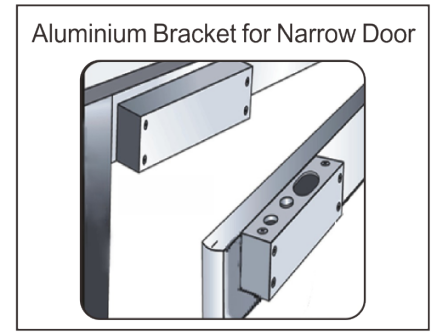
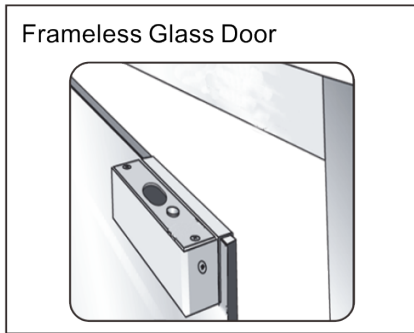
2 Cut hole

3 Fix mounting plate (For hollow metal frame)

4 Connect wires

5 Mount lock body on the door frame and test

Installation Schematic



Wiring Diagram

