

CONNECTED. DETECTED. PROTECTED.

ADPRO NVRs with XO4 Security + Operating System

The ADPRO by Honeywell product range is unique in delivering a complete end-to-end security solution— and because a system is only as strong as its weakest link— you need to invest in a system that embeds integrity and reliability all the way along the critical path..

- Live 24/7 monitoring to central monitoring stations for immediate response
- Multi-level response, including bi-directional audio, lighting/door controls
- A single recorder deploys advanced video analytics
- Full remote monitoring with the most reliable and secure transmission of alarms)
- Greater protection and significant cost savings versus human guards

With XO 4, ADPRO NVR+ customers can easily deploy multiple security and safety analytics channels — up to 32 channels on the iFT & iFT-E*, and 4 channels on the iFT Gateway. With 32 cameras examined by 32 channels of analytics, nothing will go undetected in your security domain. An ADPRO FastTrace 2E, iFT, & iFT-E NVR+ can sustain 160Mbps video streaming while processing up to 32 video content analytics (VCA), including IntrusionTrace and LoiterTrace. We call this 32/32 Vision, a security approach that goes far beyond standard approaches. An ADPRO iFT Gateway supports 8 Mbps video streaming while processing 4 VCA, including IntrusionTrace and LoiterTrace.

With 32 IP cameras at 5Mbps combined with 32 analytics, XO 4 provides unprecedented security threat protection in a single box*. Further, analytics channels can be easily procured and downloaded from Xchange, a web portal for managing ADPRO analytics software and licenses for the iFT, & iFT-E. For the iFT Gateway, you can easily add analytics using the ADPRO Commissioning Tool. Customers can employ a “pay as you grow” security approach, using analytics where and when they are needed.

ADPRO NVR+ systems are renowned for their multi-service capabilities. On a single box, customers can deploy safety and security analytics services with a few mouse clicks. Competitive solutions require multiple devices, troublesome interoperability, and field visits or box returns to deliver the same capabilities.

* Dependent on hardware model selected.



MARKET OPPORTUNITIES

- Airports
- Banks/Financial Institutions
- Corporate Office/Commercial Facilities
- Critical Infrastructure
- Government Facilities
- Healthcare Facilities
- Industrial Facilities
- Prisons
- Remote Monitoring Centers
- Retail/Commercial
- Telecommunications
- Transportation
- Universities
- Warehousing/Logistics

Honeywell

ADPRO NVRS AND KITS

ADPRO iFT

Up to 32 IP Channels or up to 16 Analytics NVR



ADPRO iFT IP ONLY - TRANSMISSION AND RECORDING

60021310	ADPRO iFT 8IP-2TB-8IN/4OUT (4HDD Ready)
60041610	ADPRO iFT 16IP-6TB-8IN/4OUT (4HDD Ready)
60001620	ADPRO iFT 0IP-6TB-20IN/8OUT (4HDD Ready)
60040020	ADPRO iFT 16IP-NO HDD-20IN/8OUT (4HDD Ready)
60041520	ADPRO iFT 16IP-4TB-20IN/8OUT (4HDD Ready)
60081620	ADPRO iFT 32IP-6TB-20IN/8OUT (4HDD Ready)
60081820	ADPRO iFT 32IP-10TB-20IN/8OUT (4HDD Ready)

ADPRO iFTE

Up to 32 IP Channels with up to 32 Analytics NVR



ADPRO iFTE IP ONLY - TRANSMISSION AND RECORDING

63021510	ADPRO iFT-E 8IP-4TB-8I-4O (4 HDD ready)
63041610	ADPRO iFT-E 16IP-6TB-8I-4O (4 HDD ready)
63041820	ADPRO iFT-E 0IP-10TB-20IN/8OUT (4HDD Ready)
63040020	ADPRO iFT-E 16IP-NO HDD-20IN/8OUT (4HDD Ready)
63041620	ADPRO iFT-E 16IP-6TB-20IN/8OUT (4HDD Ready)
63081820	ADPRO iFT -E32IP-10TB-20IN/8OUT (4HDD Ready)
63082620	ADPRO iFT-E 32IP-2x6TB-20IN/8OUT (4HDD Ready)

ADPRO iFT Gateway

4 IP with option to add 4 Analytics NVR



ADPRO iFT GATEWAY

66000000	iFT Gateway (must be ordered in multiples of 10 units)
49976020	iFT Gateway Analytics Pack

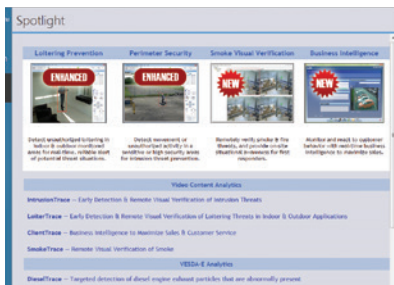
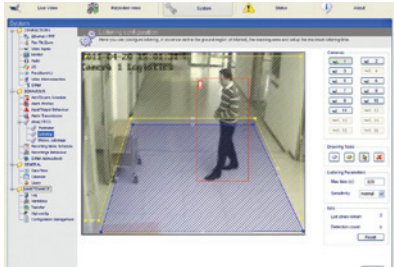
ADPRO iFT Kits

KIT PART NUMBER	QTY	COMPONENT P/N	DESCRIPTION
ANVR82VA2IP	1	60021310	ADPRO iFT 8IP-2TB-8IN/4OUT
	1	49975415	IntrusionTrace XO - For 2 Video Channel
	1	49977011	iFT(E)/FastTrace 2E/XO - 2 Channel IP License
ANVR164VA4IP	1	60041610	ADPRO iFT 16IP-6TB-8IN/4OUT
	1	49975412	IntrusionTrace XO For 4 Video Channel
	1	49977012	iFT(E)/FastTrace 2E/XO - 4 Channel IP License

ADPRO iFT Gateway Kits

KIT PART NUMBER	QTY	COMPONENT P/N	DESCRIPTION
GATEANCAMK	4	HBW2GR1V	2MP IP Low-Light Bullet Camera, TDN, WDR 120dB, 1/2.8" CMOS, 2.7-13.5mm MFZ lens, 4 IR LEDs, H.265+, PoE
	1	66000000	iFT Gateway
	1	49976020	iFT Gateway 4 Ch Analytics
GATEIPANK	1	66000000	iFT Gateway
	1	49976020	iFT Gateway 4 Ch Analytics

ADPRO RMG EXTENSIONS



INTRUSION TRACE

49975699	IntrusionTrace XO For 1 Video Channel (60-day demo)
49975413	IntrusionTrace XO For 1 Video Channel
49975415	IntrusionTrace XO For 2 Video Channel
49975412	IntrusionTrace XO For 4 Video Channel
49975414	IntrusionTrace XO For 8 Video Channel
49975416	IntrusionTrace XO For 16 Video Channel
49975417	IntrusionTrace XO For 32 Video Channel
49975418	IntrusionTrace XO For 64 Video Channel
49975419	IntrusionTrace XO For 128 Video Channel

LOITER TRACE

49975698	LoiterTrace XO For 1 Video Channel (60-day demo)
49975403	LoiterTrace XO For 1 Video Channel
49975405	LoiterTrace XO For 2 Video Channel
49975402	LoiterTrace XO For 4 Video Channel
49975404	LoiterTrace XO For 8 Video Channel
49975406	LoiterTrace XO For 16 Video Channel
49975407	LoiterTrace XO For 32 Video Channel
49975408	LoiterTrace XO For 64 Video Channel
49975409	LoiterTrace XO For 128 Video Channel

IP CHANNEL LICENSES

49977010	iFT(E)/FastTrace 2E/XO - 1 Channel IP License
49977011	iFT(E)/FastTrace 2E/XO - 2 Channel IP License
49977012	iFT(E)/FastTrace 2E/XO - 4 Channel IP License
49977013	iFT(E)/FastTrace 2E/XO - 8 Channel IP License
49977014	iFT(E)/FastTrace 2E/XO - 16 Channel IP License
49977015	iFT(E)/FastTrace 2E/XO - 64 Channel IP License
49977016	iFT(E)/FastTrace 2E /XO - 128 Channel IP License

EXTENSION LICENSES

49975600	PRO Pir HLI License to enable the connection of up to 32 PRO PIR Detectors
----------	--

ADPRO VCP - ADPRO Video Central Platinum

ADPRO VIDEO CENTRAL PLATINUM - BASE LICENSES

202449	VCPSW-1 WITH SOFTWARE LICENSE KEY
--------	-----------------------------------

ADPRO COMPATIBLE AUDIO IN/OUT CAMERAS

PART NUMBER	DESCRIPTION	Inputs	
		IR Range (m)	
H4D8GR1	12MP Network Ultra HD 4K Rugged Dome Camera, TDN, DWDR, 1/1.7" CMOS, 4.1-12.8mm MFZ lens, 3 IR LEDs, H.265, PoE+	45	yes
H4W2GR2	2MP Network Low-Light Rugged Dome Camera, TDN, WDR 120dB, 7-22mm MFZ lens, 3 IR LEDs, H.264, PoE	50	yes
H4L6GR2	6MP Network Low-Light Rugged Dome Camera, TDN, DWDR, 1/1.8" CMOS, 4.1-16.4mm MFZ lens, H.265, PoE+	50	yes
H4L2GR1V	2MP Network Ultra Low-Light Rugged Dome Camera, TDN, WDR 140dB, 1/2.8" CMOS, 2.7-13.5mm MFZ lens, 3 IR LEDs, H.265+, PoE	50	yes
H4W2GR1V	2MP Network Low-Light Rugged Dome Camera, TDN, WDR 120dB, 1/2.8" CMOS, 2.7-13.5mm MFZ lens, 3 IR LEDs, H.265+, PoE	50	yes
H4W4GR1V	4MP Network Low-Light Rugged Dome Camera, TDN, WDR 120dB, 1/3" CMOS, 2.7-13.5mm MFZ lens, 3 IR LEDs, H.265+, PoE	50	yes
HM4L8GR1	8MP Network Multi-imager Rugged Dome Camera, TDN, DWDR, 1/1.9" CMOS (x4), 5.0mm/M12 (x4), H.265, PoE+	30	yes
HBD8GR1	12MP Network Ultra HD 4K Bullet Camera, TDN, DWDR, 1/1.7" CMOS, 5.1-12.8mm MFZ lens, 4 IR LEDs, H.265, PoE+	65	yes
HBL2GR1V	2MP Network Ultra Low-Light Bullet Camera, TDN, WDR 140dB, 1/2.8" CMOS, 2.7-13.5mm MFZ lens, 4 IR LEDs, H.265+, PoE	60	yes
HBL6GR2	6MP Network Low-Light Rugged Bullet Camera, TDN, DWDR, 1/2.8" CMOS, 4.1-16.4 mm MFZ lens, H.265, 4 IR LEDs, PoE+	50	yes
HBW2GR1V	2MP Network Low-Light Bullet Camera, TDN, WDR 120dB, 1/2.8" CMOS, 2.7-13.5mm MFZ lens, 4 IR LEDs, H.265+, PoE	60	yes
HBW2GR3V	2MP Network Low-Light Bullet Camera, TDN, WDR 120dB, 1/2.8" CMOS, 5-60 mm MFZ lens, 4 IR LEDs, H.265+, PoE	60	yes
HBW4GR1V	4MP Network Low-Light Bullet Camera, TDN, WDR 120dB, 1/3" CMOS, 2.7-13.5mm MFZ lens, 4 IR LEDs, H.265+, PoE	60	yes
HMBL8GR1	8MP Network Multi-imager Bullet Camera, TDN, DWDR, 1/2.8" CMOS (x4), 3.0mm/M12 (x4), H.265, PoE+	30	yes
HDZ302D	2MP Network PTZ Outdoor 5" Dome, TDN, WDR 120dB, 1/2.8" CMOS, 4.5-135mm MFZ lens (30x), H.265, PoE+, 24VAC, IP66/IK10	-	yes
HDZ302DE	2MP Network PTZ Outdoor 6" Dome, TDN, WDR 120dB, 1/2.8" CMOS, 4.5-135mm MFZ lens (30x), H.265, PoE+, 24VAC, IP66/IK10	-	yes
HDZ302DIN	2MP Network PTZ Indoor Dome, TDN, WDR 120dB, 1/2.8" CMOS, 4.5-135mm MFZ lens (30x), H.265, PoE+, 24VAC, IK10, In-Ceiling	-	yes
HDZ302LIK	2MP Network PTZ Outdoor Camera, TDN, WDR 120dB, 1/1.9" CMOS, 6-180mm MFZ lens (30x), H.264, PoE++, 24VAC, IP67/IK10	150	yes
HDZ302LIW	2MP Network PTZ Outdoor Camera, TDN, WDR 120dB, 1/1.9" CMOS, 6-180mm MFZ lens (30x), H.264, PoE++, 24VAC, IP67, Wiper	150	yes
HDZP252DI	2MP Network PTZ Outdoor Camera, TDN, WDR 120dB, 1/2.8" CMOS, 4.8-120mm MFZ lens (25x), 6 IR LEDs, H.265, PoE+, IP66	100	yes
HDZP304DI	4MP Network PTZ Outdoor Camera, TDN, WDR 120dB, 1/3" CMOS, 4.5-135mm MFZ lens (30x), 6 IR LEDs, H.265, PoE+, IP66	100	yes
HPW2P1	2MP Network Pin-hole Camera, TDN, WDR 120dB, 1/2.7" CMOS, 2.8 mm, H.265, 12VDC	-	-
HC30W42R3	2MP Network Dome Camera, TDN, WDR, 1/2.9" CMOS, 2.8mm, 2 IR LEDs, H.265, PoE, IP66/IK10, NDAA Section 889 Compliant	30	-
HC30W45R3	5MP Network Dome Camera, TDN, WDR, 1/2.7" CMOS, 2.8mm, 2 IR LEDs, H.265, PoE, IP66/IK10, NDAA Section 889 Compliant	30	-
HC30WB2R1	2MP Network Bullet Camera, TDN, WDR, 1/2.9" CMOS, 4mm, 2 IR LEDs, H.265, PoE, IP66, NDAA Section 889 Compliant	50	-
HC30WB5R1	5MP Network Bullet Camera, TDN, WDR, 1/2.7" CMOS, 4mm, 2 IR LEDs, H.265, PoE, IP66, NDAA Section 889 Compliant	50	-
HC30WB5R2	5MP Network Bullet Camera, TDN, WDR, 1/2.7" CMOS, 2.8mm-12mm MFZ Lens, 2 IR LEDs, H.265, PoE, IP66, NDAA Section 889 Compliant	50	-
HC30WF5R1	5MP Network Fisheye Camera, TDN, WDR, 1/2.7" CMOS, 1.16mm, 6 IR LEDs, H.265, PoE, IP66/IK10, built-in microphone, NDAA Section 889 Compliant	20	-

For more information

www.security.honeywell.com

Honeywell Commercial Security

715 Peachtree St. NE

Atlanta, GA 30308

1.800.323.4576

www.honeywell.com

HVS-ADPROQRG-04-US(0220)DS-Z
© 2020 Honeywell International Inc.

Honeywell