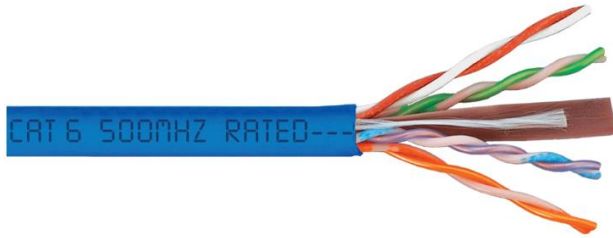


Category 6 500MHz Plenum UTP Solid Cable

Package Include:

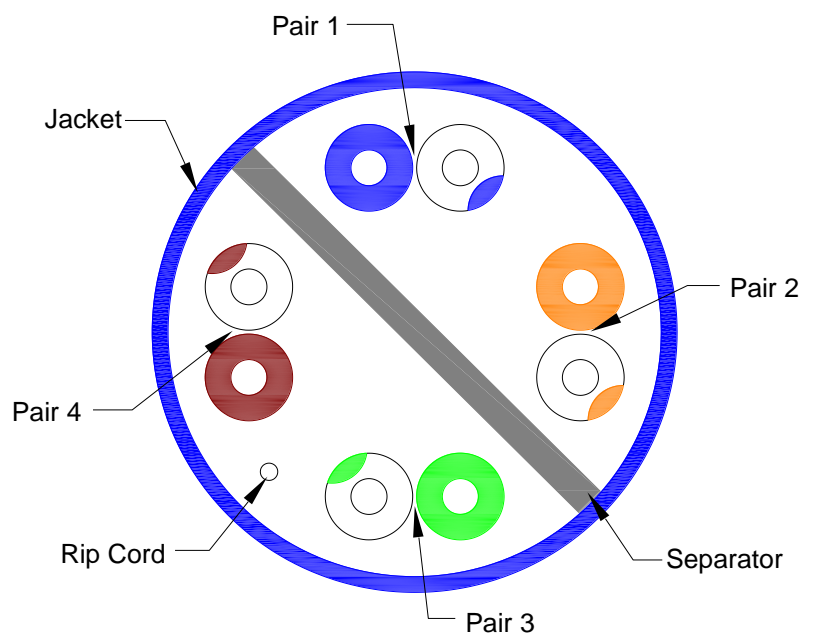
A. Category 6 UTP CMP Solid Cable, **1000 Feet**



Features and Benefits

- Exceeds TIA 568-C.2 Category 6 standard
- Easy to dispense cable with REELEX® design box, saving you energy and time on the job site
- Bare Solid Copper Wire construction to assure performance and quality
- Convenient sequential footage markings for usage tracking
- Plenum rated required in most commercial installations
- Ideal for data, digital video, broadband, and baseband analog video
- ETL verified TIA/EIA 568-C.2 for guaranteed performance
- UL 1863 compliant
- Available in blue, gray, green, white, and yellow

Pair 1: Blue & White/Blue
 Pair 2: Orange & White/Orange
 Pair 3: Green & White/Green
 Pair 4: Brown & White/Brown



Category 6 500MHz UTP Cable Electrical Performance (100 Meter Loop)														
Frequency(MHz)	1.0	4.0	10.0	16.0	20.0	31.25	62.5	100.0	150.0	200.0	250.0	350.0	400.0*	500.0*
Insertion Loss Max (dB)	2.0	3.8	6.0	7.6	8.5	10.7	15.4	19.8	24.7	29.0	32.8	39.8	43.0	48.9
Return Loss (dB)	20.0	23.0	25.0	25.0	25.0	23.6	21.5	20.1	18.9	18.0	17.3	16.3	15.9	15.2
NEXT Min (dB)	74.3	65.3	59.3	56.2	54.8	51.9	47.4	44.3	41.7	39.8	38.3	36.1	35.3	33.8
PS NEXT (dB)	72.3	63.3	57.3	54.2	52.8	49.9	45.4	42.3	39.7	37.8	36.3	34.1	33.3	31.8
ACR Min (dB)	72.3	61.5	53.3	48.7	46.3	41.2	32.0	24.5	16.9	10.8	5.5	N/A	N/A	N/A
PS ACR Min (dB)	70.3	59.3	51.3	46.7	44.3	39.2	29.9	22.5	14.9	8.8	3.5	N/A	N/A	N/A
ACRF Min (dB)	67.8	55.7	47.8	43.7	41.7	37.9	31.8	27.8	24.3	21.8	19.8	16.9	15.8	13.8
PS ACR Min (dB)	64.8	52.8	44.8	40.7	38.8	34.9	28.9	24.8	21.3	18.8	16.8	13.9	12.8	10.8

*Frequencies beyond 350 MHz are for reference only

NOTE: UNLESS OTHERWISE SPECIFIED

- Standard:
 - ANSI/TIA 568-C.2
 - ANSI/TIA 862
 - ISO/IEC 11801 Ed. 2.0 (Class E)
 - ICEA S-102-700
 - ICEA S-116-732
 - UL 444
 - NEC/CEC TYPE CMP (NFPA 262)
 - RoHS Compliant Directive 2002/95/EC
- Construction:
 - Size: 23 AWG
 - Conductor: Solid Bare Copper
 - Insulation: FRPE
 - Jacket: Low-Smoke, Flame-Retardant PVC -- Ø0.200" ±0.007 (5.1MM±0.2)
 - Rip Cord: Polyester
- Electrical/Physical Properties:
 - Temperature Rating:
 - Installation Temperature: 32° ~ 140°F
 - Operational Temperature: -4° ~ 167°F
 - DC Resistance: 8.9 OHM/100m @ 20°C Max
 - DC Resistance Unbalance: 3.0% Individual Pair
 - Characteristic Impedance: 1~350 MHz, 100±15 OHMS
 - Nominal Velocity of Propagation (NVP): 70%
 - Delay Skew (Max): 45 NS/100M
 - Minimum Bend Radius: 1.0"
 - Maximum Pulling Force: 32 lbs.
- Packaging:
 - Box Size: 15.50" x 15.50" x 10.25"
 - Weight: 27.55 lbs./1000 Foot
- Application:
 - IEEE 802.3: 1000 Base-T (Gigabit Ethernet), 100 Base-TX, 10 Base-T
 - ANSI/TIA 854: 1000 Base-TX
 - 155 Mp/s, 1.2 Gb/s AT
 - ANSI X3.263: 100 Mb/s
 - IEEE 802.3af Data terminal equipment (DTE) PoE
 - IEEE 802.3af for PoE Plus

