

## Quick Connect Adapters & Couplings



- Carlon one piece ENT Quick Connect Couplings, Threaded Adapters and Snap-In Terminator Adapters are suitable for damp locations. Quick Connect Couplings and Threaded Adapters are concrete-tight when used with Carlon ENT.
- All sizes of rigid nonmetallic conduit fittings are compatible with ENT when using ENT cement.
- Rigid nonmetallic conduit fittings are recommended for use with Carlon 1 1/4" – 2" Flex-Plus Blue ENT.
- Use of ENT Blue Quick-Set Cement is required. See page 13 for details.
- When One Piece Quick Connect Snap-In Terminator Adapters are installed in a concrete application, Carlon's flat sealing washers must be used on the box connection ends.

### Couplings



Part. No.	Size	Standard Carton Quantity	Standard Carton Weight (lbs.)
A240D	1/2"	150	2.90
A240E	3/4"	100	3.00
A240F	1"	50	2.30

### Threaded Adapters



Part. No.	Size	Standard Carton Quantity	Standard Carton Weight (lbs.)
A243D	1/2"	150	2.55
A243E	3/4"	100	2.30
A243F	1"	50	2.00

### Snap-In Adapters



Part. No.	Size	Standard Carton Quantity	Standard Carton Weight (lbs.)
A253D	1/2"	150	2.70
A253E	3/4"	100	2.90
A253F	1"	50	2.30

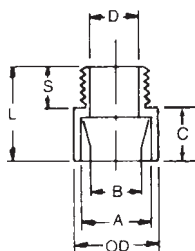
## Rigid Nonmetallic Conduit Adapters and Couplings



### Male Terminal Adapters



For adapting nonmetallic conduits to boxes, threaded fittings, metallic systems. Male threads on one end, socket end on other.



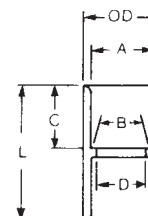
Part No.	Size	Std. Ctn. Qty.	A Typical	B Typical	Min. D	Max. OD	C	S Typical	L	Std. Ctn. Wt. (lbs.)
E943D	1/2	150	.852	.836	.597	1 1/8	5/8	9/16	1 5/16	2.8
E943E	3/4	125	1.064	1.046	.800	1 11/32	3/4	9/16	1 3/8	3.5
E943F	1	50	1.330	1.310	1.018	1 5/8	1	1 1/16	1 25/32	3
E943G	1 1/4	50	1.677	1.655	1.332	2 1/32	1	3/4	1 15/16	4
E943H	1 1/2	25	1.918	1.894	1.566	2 5/32	1 3/16	3/4	2 1/16	2.5
E943J	2	50	2.393	2.369	2.000	2 21/32	1 3/16	3/4	2 1/8	7

### Standard Couplings

All socket fittings should be attached Using Carlon solvent cement. Using Carlon fittings with Carlon nonmetallic conduit insures system integrity.



Socket type for joining nonmetallic conduit.



Part No.	Size	Std. Ctn. Qty.	A Typical	B Typical	Min. D	Max. OD	C Typical	L	Std. Ctn. Wt. (lbs.)
E940D	1/2	150	.852	.836	.728	1 7/64	1 1/16	1 1/2	4.1
E940E	3/4	100	1.064	1.046	.840	1 5/16	3/4	1 5/8	4.4
E940F	1	50	1.330	1.310	1.210	1 5/8	1 5/16	2	3.5
E940G	1 1/4	30	1.677	1.655	1.535	1 63/64	1	2 1/8	3.5
E940H	1 1/2	25	1.918	1.894	1.755	2 15/64	1 1/8	2 3/8	3.9
E940J	2	30	2.393	2.369	2.190	2 47/64	1 3/16	2 1/2	5.25