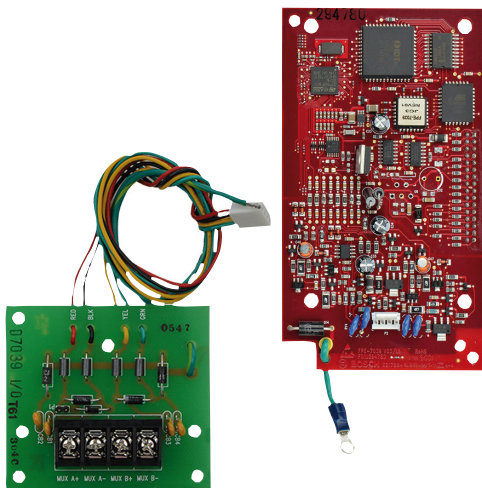


# FPE-7039 Multiplex expansion module for FPD-7024

www.boschsecurity.com



**BOSCH**  
Invented for life



- ▶ Provides two Class B multiplex buses (supports addresses 9 to 128, 129 to 255)
- ▶ Provides one Class A multiplex bus (supports addresses 9 to 128)
- ▶ Allows system to support conventional and addressable devices at the same time
- ▶ Scales from a conventional to an addressable system without changing the control panel
- ▶ Increases event history buffer to 499 events

The FPE-7039 MUX expansion module is designed to enhance the conventional features of the FPD-7024, D7024 or DS9400 FACP. The module connects directly to the FACP and results in a total of up to 255 addressable points. The module also increases the number of relay outputs (to 58 on the D7024 control panels and 59 on FPD 7024 control panels). It adds an additional 400 events to the history buffer for a total of 499 non volatile events. It also allows for up to 100 system users (an addition of 84 PINs from the base system).

The module can be programmed remotely from a PC using the RPS Remote programming software.



**Notice**

The D7024 and DS9400 panels are listed to UL864, 8th edition.

**Certifications and approvals**

Region	Regulatory compliance/quality marks	
USA	UL	UL 864, Control Units and Accessories for Fire Alarm Systems
	CSFM	see www.boschsecurity.com (the Bosch website)

**Installation/configuration notes**

**Compatible Panels**

The FPE-7039 is compatible with the FPD-7024, D7024\*, and DS9400\* Fire alarm control panels.

\* Legacy product not available for purchase. Legacy products were investigated to comply only to UL864 8th edition or earlier.

**Mounting Considerations**

The module mounts onto the control panel board inside of the control panel's enclosure using connector pins. The Input\Output board mounts to the inside wall of the enclosure for field wiring.

**Wiring Considerations**

Refer to control panel's installation guide for additional wiring requirements.

**Notice**

If used in fire applications, a minimum of 18 AWG (ISO 0.75 mm<sup>2</sup>) is required.

Wire resistance	50 Ω at +20°C (+68°F), depends on method and wire sized used
Wire length	5950 ft. (1810 m) , depends on wire size and number of devices
Wire capacitance	< 0.12 μF (max per bus)

**Notice**

Do **not** use shielded wire. Twisted-pair wire is not recommended, but is acceptable if wire length is reduced by 50%.

**Parts included**

Quantity	Component
1	FPE-7039 board
1	FPE-7039 Input/output board
3	Standoffs for Input/output board
4	Standoffs for FPE-7039 board
1	Literature pack

**Technical specifications****Environmental**

Environment	Indoor, dry
-------------	-------------

**Power**

<b>Current Draw</b>	
Alarm	190 mA maximum
Load, Class A	100 mA maximum
Load, Class B	100 mA maximum for each bus
Standby	190 mA maximum
Bus Voltage	8.5 V to 13 V
Wire Resistance (maximum)	50 Ω at +20°C (+68°F), depends on method and wire sized used

**Ordering information****FPE-7039 Multiplex expansion module for FPD-7024**

It enhances the features of the FACPs. It increases the number of addressable points to 247. It increases the number of relay outputs to 58 on the D7024/DS9400 or 59 on the FPD-7024. It increases number of events on the history buffer to 499.

Order number **FPE-7039**

**Accessories****D7042 Remote module, 8-input class B**

Board and plastic enclosure with spring tamper  
Order number **D7042**

**D7042B Multiplex module, metal, 8-input**

Board on mounting plate with metal enclosure  
Order number **D7042B**

**D7044 Multiplex single-input module, 12V**

The module connects a normally-open (NO) contact to the multiplex bus of an FPD-7024, D7024, or DS9400 FACP. The module draws supervised input power from the FACP for use in a Class B configuration. Rotary switches allow convenient address setting.  
Order number **D7044**

**D7044M Multiplex mini single-input module, 12V**

Connects a normally-open (NO) contact to the multiplex bus of an FPD-7024, D7024, or DS9400M FACP.  
Order number **D7044M**

**D7050 Multiplex smoke head**

The symmetry of the D7050's optical chamber allows 360° uniform smoke entry, but minimizes external light entry. Within the chamber, large smoke particles scatter infrared light which is detected by a gated, high-speed, photodiode sensor.  
Order number **D7050**

**D7050DH Multiplex duct smoke detector head**

Designed for use with the Multiplex Duct Detector Housing  
Order number **D7050DH**

**D7050TH Multiplex detector head, fixed heat**

The D7050TH has an optical smoke chamber and a 35°F (57°C) fixed-temperature sensor. Use it in confined areas where a fire increases air temperature slowly but substantially before the fire breaks confinement.  
Order number **D7050TH**

**D7050-B6 Multiplex base, 2-wire**

Required base for the D7050 and D7050TH MUX smoke heads  
Order number **D7050-B6**

**D7052 Multiplex dual-input module, 12V**

Connects normally-open (NO) contacts to the multiplex bus of an FPD-7024, D7024, or DS9400M FACP  
Order number **D7052**

**D7053 Multiplex input/output module, 12V**

Connects normally-open (NO) contacts to the multiplex bus of an FPD-7024, D7024, or DS9400M FACP in configurations as either Class A or Class B configuration  
Order number **D7053**

**FLM-7024-ISO MUX bus isolator module**

This module connects to the FPE-7039 MUX expansion module on the FPD-7024 FACP without using a MUX bus address. It isolates a shorted section on the SLC from the rest of the system to minimize communication loss.  
Order number **FLM-7024-ISO**

**FMM-7045 Multiplex manual station, single, red**

The single-action manual station is UL listed and meets Americans with Disabilities Act (ADA) requirements. An address on the polling circuit is easily set with rotary switches. The pull-down handle locks in the activated position. It is reset by opening the unit with a key and then relocking it.  
Order number **FMM-7045**

**FMM-7045-D Multiplex manual station, double, red**

The double-action manual station is UL listed and meets Americans with Disabilities Act (ADA) requirements. An address on the polling circuit is easily set with rotary switches. The pull-down handle locks in the activated position. It is reset by opening the unit with a key and then relocking it.  
Order number **FMM-7045-D**

**Represented by:**

**Europe, Middle East, Africa:**  
Bosch Security Systems B.V.  
P.O. Box 80002  
5600 JB Eindhoven, The Netherlands  
Phone: + 31 40 2577 284  
emea.securitysystems@bosch.com  
emea.boschsecurity.com

**Germany:**  
Bosch Sicherheitssysteme GmbH  
Robert-Bosch-Ring 5  
85630 Grasbrunn  
Germany  
www.boschsecurity.com

**North America:**  
Bosch Security Systems, Inc.  
130 Perinton Parkway  
Fairport, New York, 14450, USA  
Phone: +1 800 289 0096  
Fax: +1 585 223 9180  
onlinehelp@us.bosch.com  
www.boschsecurity.us

**Asia-Pacific:**  
Robert Bosch (SEA) Pte Ltd, Security Systems  
11 Bishan Street 21  
Singapore 573943  
Phone: +65 6571 2808  
Fax: +65 6571 2699  
apr.securitysystems@bosch.com  
www.boschsecurity.asia