

### Reliable and Dependable

Since 1972 Corby Digital Keys have been utilized in thousands of installations throughout the world. Digital Keys provide good looks, reliability and convenience in all types of security applications. The most important are arming and disarming alarm systems, activating electrically operated doors and controlling industrial machinery and office equipment.

Corby's commitment to quality, unlimited service, and an unparalleled warranty policy continues to demonstrate leadership in the Access Control and Digital Key marketplace.

### Unsurpassed Security

The Corby Digital Key consists of a 12 digit keypad and an onboard electronics module. The Digital Key requires a four or five digit access code to be pressed in an exact order. Unlike other imitators, the Corby Digital Key uses true "Out of Sequence" error detection that demands exact entry of the operating code. Any deviation from the correct sequence instantly resets the unit.

More than 95,000 different code combinations are possible with the Corby Digital Key because of the twelve digit keypad. Digital Keys that use less than twelve digits cannot provide the same level of security.

### Field Programmable

Setting the user code is simple, reliable, and takes only seconds. Choose a four or five digit operating code and plug the supplied jumper wires into the "code bank". Panic and zone control codes are also programmed using this method. Codes cannot be lost due to power failure or disturbances.

### Multiple Functions

Command seven additional security functions or devices from every 7000 Series Corby Digital Key. Any two buttons may be selected for panic, zone control or auxiliary functions. As an example, zone shunting enables the user to turn on or off certain security areas without affecting the total security system.

### Outdoor Applications

Weatherproof models are available in heavy-duty aluminum. Digital Keys are mounted in housings which conceal them from the environment as well as from sight. A convenient night light provides illumination of the keypad.

### Unlimited Flexibility

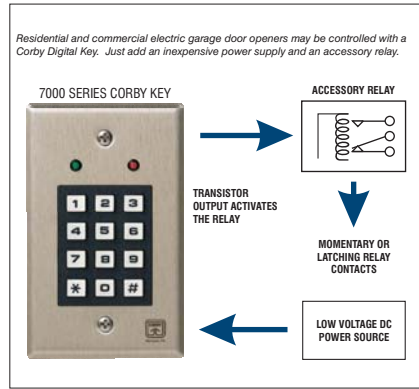
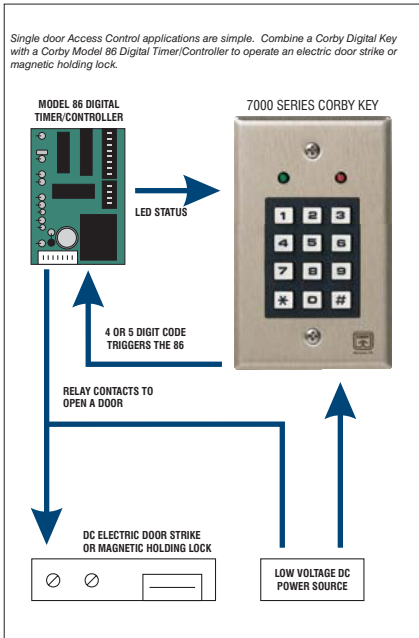
Corby Industries, Inc. offers a wide variety of accessory products to enhance the flexibility of a Corby Digital Key installation. Add one of our momentary or latching relays when dry relay contacts are required. For timing, zone control and door latch installations, add our Model 86 Digital Timer/Controller.

Various combinations of super bright LEDs are installed in Corby Digital Keys providing visual feedback to the user. Corby LEDs have a wide viewing angle and may be used to indicate any security condition. Corby has Digital Keys for every requirement. Please contact us for more information.

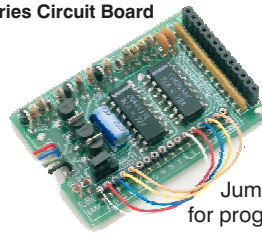


## Additional Benefits & Features

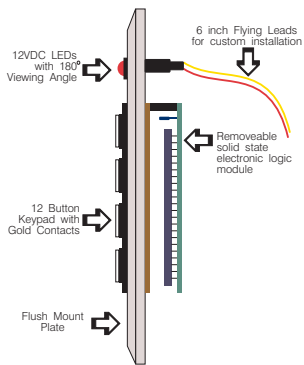
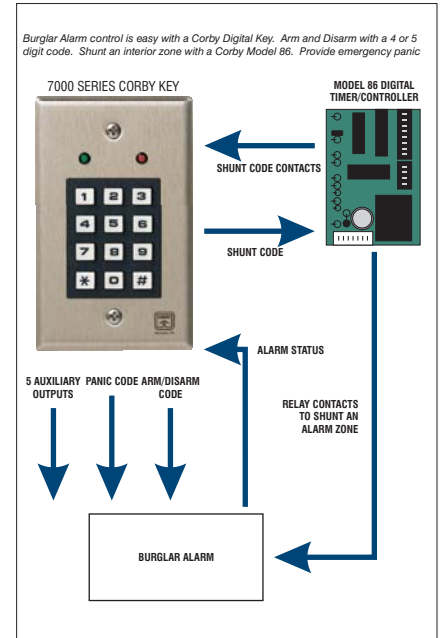
- Program the keypad with a 4 or 5 digit code length.
- Quick-connect code wires for easy programming.
- Codes are stored in a non-volatile memory.
- Silent panic code is active 24 hours a day.
- Control up to 7 additional devices.
- Flush and surface mount models.
- LED's are installed for visual feedback.
- Heavy-duty cast metal Versions.
- Single and double-gang versions available.
- Over 95,000 possible code Combinations.
- Non-volatile memory.
- 6-24VDC operation.



7000 Series Circuit Board



Jumper wires for programming



### Typical Applications

- ◆ Office Buildings
- ◆ Computer Rooms
- ◆ Business Offices
- ◆ Household Garage Doors
- ◆ Restaurant Liquor Storage Areas
- ◆ Laboratory & Pharmacy Facilities
- ◆ Apartment & Condominium Entrances
- ◆ Manufacturing Facilities
- ◆ Mini-Storage Facilities
- ◆ Police Evidence Rooms
- ◆ Employee Entrances
- ◆ Parking Gates

### Specifications:

- Input Voltage:** 6-24 Volts DC
- Power Consumption:** 4ma @ 12 Volts Normal  
25ma When Operating
- Output:** Positive and Negative @ 350 ma Each
- Visual Outputs:** Super Bright LEDs
- Operating Temperature:** 18° C to 55° C (0° F to 131° F)
- Mounting:** Flush or Surface
- Weight:** Approximately 4 ounces
- Dimensions:** Keypad 2.1" X 1.6" (53mm X 40mm)  
Single gang plate 2.75" X 4.5" (70mm X 114mm)  
Double gang plate 4.56" X 4.5" (115mm X 114mm)

### Ordering Information:

#### Programmable Keypads

##### Indoor

- 7020 Single-gang, flush mount with one green and red LED.
- 7021 Double-gang, flush mount with one green and red LED.
- 7024 Hidden view with tamper switch, one green and red LED.
- 7030 Single-gang, flush mount w/ one green, yellow and red LED.
- 7040 Single-gang, flush mount w/ one green, two yellow and one red LED.
- 7071 Double-gang, flush mount w/ one green, five yellow and one red LED.

##### Outdoor

- 7022 Aluminum cover, outdoor, surface mount w/ one green and red LED.  
Also includes 12 VDC night light.
- 7064 Cast metal, heavy-duty mounted in a lock box.
- 7066 Cast metal, heavy-duty, flush mount with one green and red LED.

#### Back Boxes

- 11 Tamper box, flush mount with SPDT tamper switch.
- 12 Tamper box, surface mount with front and rear CC tamper.
- 14 Surface mount. Use with 6566 keypads.

#### Electronic Relays - Timer Modules

- 78 Electronic relay module. SPDT momentary relay.  
1 Amp, 28 VDC contacts, 6-14 VDC.
- 86 Digital timer-controller module. Panic, latching, timer and zone control.  
5 Amp, 30 VDC contacts. 6-14 VDC.

#### Relays

- 22 Latching 12 VDC SPST with 6" wires.
- 25 Momentary 6-12 VDC SPST with 6" wires.

These specifications, product features and product information are subject to change without notice or obligation. Before purchasing or specifying this equipment, be sure to call Corby Customer Service to verify the current status of intended products, software, or firmware to ensure the product(s) will meet or exceed your requirements. Corby Industries, Inc. is not responsible for typographical errors.

### Architectural Specifications:

The Digital Key shall consist of a 12 button keypad mounted on an aluminum plate. The keypad shall have twelve double shot molded buttons and gold contacts. A removable and replaceable self-contained electronic module shall be attached to the rear of the keypad. The electronics module shall provide a positive output and a negative output. Both outputs shall supply a minimum of 350ma each. Seven auxiliary positive outputs shall also be available. The Digital Key shall be programmed by jumper wires and shall not lose its code when power is disconnected. The operating code shall be four or five digits. The electronics shall reset whenever an incorrect or out of sequence digit is pressed.

Keypads will be available in a weatherproof version, with spring loaded cover to conceal the keypad, and without a cover. Keypads will be flush or surface mountable to a single gang electrical type box. Keypads will be 2.75" wide X 4.5" high X 1" deep. Weatherproof keypads without cover will be 3.23" wide X 5.0" high X 1" deep.

