



Keyscan Access Control Systems Product Guide

Smart access means
confidence

Keyscan Networked Access Control Solutions

Security. Sustainability. Reliability.

dormakaba stands for security, sustainability and reliability. Our mission is to make the lives of our customers smart and secure. Holding true to our mission, we invest in innovation to develop access control solutions that exceed your demands and expectations. The commitment to develop innovative yet practical products is what differentiates dormakaba. Our Keyscan networked access control solutions are powerful examples of our dedication to providing premium access control systems that perform as designed throughout the life of your building.

" The commitment to develop innovative yet practical solutions is what differentiates dormakaba."

To ensure our access control solutions perform at the highest level, we partner with a skilled network of service and installation dealers and integrators across North America, and beyond. You can trust dormakaba for exceptional product support, including installation, retrofit, replacement and maintenance.

We will continue to deliver systems that define security and convenience. Together with first class aftermarket sales and technical support, our priority will always be adding value for our customers and esteem to our brands.



Keyscan Aurora Access Control Management Software

Our passion for developing high performing software solutions is the cornerstone of dormakaba's approach to access control. We combine technology with functionality to form a holistic concept with a high level of safety, control and efficiency—making access in life, smart and secure.

Technology is the common thread in optimizing access control systems. With an emphasis on innovation and sustainability, dormakaba's Keyscan Aurora access control software is a high-performance software platform. With many features and integration options, it provides a single software solution for access control with no performance-limiting or system expansion governors or recurring fees. Keyscan Aurora is ideal for any access control applications regardless of size or complexity.

Advanced features include managing, auditing and controlling door and elevator floor access as well as integration support for wireless locks and SMART elevator system technologies. Aurora can support a hybrid hardwired and E-Plex wireless system with full control and audit capability, using the same credentials throughout your facility.

Aurora delivers impressive capabilities, features and support such as:

- VMS Integration with Milestone, OnSSI, i3 International, Salient Systems, Exacq, OpenEye, HIK Vision, and more
- E-Plex and select Schlage wireless locks integration
- Active Directory integration
- Support for Keyscan and HID mobile access solutions
- SMART elevator system integration
- Aurora web client interface
- Centrally managed access control
- Upgrade to full SQL server
- Optional licensed and add-on modules for enhanced and added functionality
- Ten (10) assigned groups to a single credential holder
- Support for 45,000 credentials (up to 90,000*)
- People-centric methodology
- Unlimited user-definable fields
- Optional licensed Software Development Kit (SDK)
- English, French, Spanish and Portuguese language support

*Hardware option available upon special order.

Some VMS integrations work with specific Aurora versions. Contact dormakaba Canada for the latest compatibility details.



01 Aurora Schedules



02 People-centric interface



03 Multi-language support



04 Wireless lock integration



05 Active mapping with integrated floor plans



06 VMS and CCTV integration

Keyscan Aurora Add-On and Optional Licensed Modules

Keyscan Aurora software features add-on and optional licensed modules designed for software integration and enhanced overall system functionality

Add-On Modules

Add-on modules are installed as separate applications and registered with a license number provided when you purchase the software. When you register your software online you'll obtain an unlock number to complete the registration and fully enable your software.



Aurora Web-Client (web-based access control)

Aurora's web-client interface add-on allows you limited management of your access control system for any of your facilities at anytime, from any location, using any web-enabled computer or mobile device. It remains the ideal solution for those who need mobility.



Aurora SQL Upgrade

Aurora supports upgrading to a full SQL database removing the 10 GB limit and giving you many more options, features and benefits. Requires server, OS and appropriate licensing for SQL Server 2012.

Optional Licensed Modules

Aurora optional licensed modules are installed during the Aurora installation process. To activate any optional licensed module for use, you need to register a module's license number provided when you purchase the module.



Video Management Software Integration (VMS)

Aurora offers a new and robust VMS platform integration. When licensed, allows Aurora users to open and use client software from leading manufacturers such as Milestone, i3 International, OnSSI, Open Eye, Salient, HIK Vision and Exacq. Contact dormakaba Canada for latest integration compatibility



Intrusion Integration

Aurora allows increased integration with DSC MAXSYS and PowerSeries intrusion panels*. Aurora is designed to accommodate other leading intrusion or security product lines such as the DMP XR550DN series as well as providing Aurora users with even more versatility.



* Does not support PowerSeries Neo

*may require additional hardware and software



BioConnect

Keyscan Aurora software version 1.0.14 or higher now integrates with BioConnect software to give you functionality with Suprema's new generation of biometric readers for your Keyscan access control system. IP based fingerprint and facial recognition access control devices feature easy installation and user-friendly operation. They are available for biometric and/or card reading capability within Keyscan Aurora environments.



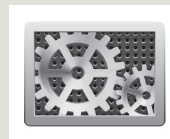
EasyLobby

Keyscan Aurora access control management software is built with a visitor management feature to easily schedule, track and generate full reports on visitors to your facility. For facilities that require a more progressive visitor management system, Keyscan Aurora offers integration with EasyLobby® Visitor Management software. EasyLobby allows for manual or automated recording and collection of visitor data, for the purpose of knowing who is in your facility, who they are visiting, and for how long.



Active Directory

Active Directory integration with Keyscan Aurora Version 1.0.17 or higher. With the new Keyscan Aurora release, people may be linked to their Active Directory record. Active Directory expedites system user permissions and day-to-day activities with Aurora. Not available through distribution. For information, contact dormakaba Canada for details 1 888 539-7226



Software Developers Kit

SDK (Software Development Kit) is an application programming interface (API) that harnesses Keyscan's Aurora functionality from within another application. It is ideal for custom integrations to make Aurora function seamlessly with existing software platforms. Contact dormakaba Canada for details 1 888 539-7226



SAFLOK integration

Saflok Access Control Management and Keyscan Aurora seamlessly integrate for a complete access control solution for lodging and multihousing customers. It is a cost-effective and scalable solution compatible with Saflok lock models including Quantum and MT series, RT, Adese and Confidant RDID. Together the integration provides a solid platform for both front of house and back of the house access control.

Other Optional Licensed Modules

- Additional Client/Web License
- Additional Client/Web License 5-pack
- Additional Client/Web License 10-pack
- Reverse Network Single
- Reverse Network 5-pack
- Reverse Network 10-pack

The Keyscan Aurora User Interface

The Aurora user interface has been completely redesigned to enhance productivity and save time. This functionality is found with Aurora's new quick-launch buttons.



People Management

This section provides access to all functions required to add, edit and manage your database of credential-holders, visitors, documents, credentials and access levels assigned.



System Settings Management

Perform system maintenance and day-to-day tasks such as adding, editing and managing system users, optional information fields, holidays, card design templates, application utilities and data import/export options.



Site Settings Management

Site setting preferences allow you to quickly program and edit new or existing site information, program new and existing hardware, add optional information fields, manage groups, Present3 commands, active maps and floor plans.



Video Integration

This optional module allows video management, IP camera and DVR/NVR integration from leading manufacturers. Plus, continued support for multi-monitor capability continues to be an ideal solution for workspace environments and monitoring stations.



System Status Management

System Status preference is where Aurora users can set, customize and/or view status of all devices, enforce a lock down and search for various transactions.



Active Mapping and Floor Plans

This section allows you to open and interact with active maps and floor plans for one or all of your sites in Keyscan Aurora. Active mapping supports 2D and 3D maps and/or master floor plans.



OS Support

Aurora operates in Windows 7, Windows 8, Windows 10 (professional) Windows Server 2016 64-bit standard, Windows Server 2008 R2 and 2012 environments. For full PC and operating system specifications, visit www.keyscan.ca.

Aurora Hardware Compatibility

Is your Keyscan access control hardware Aurora ready? If you purchased and installed "blue" Keyscan ACU Boards with firmware version 9.20 your hardware is compatible to run Aurora. Otherwise, you require a system firmware chip upgrade. For more information on door and elevator floor controllers, visit our website at www.keyscan.ca



Keyscan LUNA™

A giant leap for small business access control.

Keyscan LUNA™ is a cost-effective access control solution specifically designed for installations of 1 to 6 doors.

The Keyscan LUNA™ solution is formed from two components:

- SDAC access control unit
- Keyscan LUNA™ software

The SDAC is available through your preferred distributor. Keyscan LUNA complementary software can be downloaded at any time from dormakaba's website.

The Single Door Access Control unit is designed to secure one door with up to two readers and one electric strike or electromagnetic lock. The unit functions on a WiFi point-to-point or WLAN with a PC or laptop running LUNA™ software.

The combination of access control units and comprehensive software, together with low computer overhead, helps make access control accessible and affordable for small businesses. Security, accountability, user management and reporting is now available at a fraction of the cost of comparable enterprise systems.



SDAC Features:

- WiFi point-to-point or WLAN connectivity
- Configurable mounting positions
- Two reader ports (in/out)
- Board DIP switches for system options.
- Dual processors ensure full panel operation even during system downloads
- Lock relay – form C dry contacts
- Four 1/2-inch wiring knockouts maximize installation flexibility and cabling concealment.
- Functions with these credential types:
 - Keyscan 36-bit;
 - Keyscan mobile 36-bit;
 - Large Card Decimal;
 - Large Card Hex and;
 - 26-bit formats.
- Requires Keyscan LUNA™ software.
Download software by visiting www.dormakaba.us/LUNAsoftware

Keyscan LUNA™ software benefits:

- Comprehensive and easy to use
- Encrypted database
- No licensing or recurring fees
- Software for small business access control needs
- One copy of LUNA™ software can program and manage up to 6 SDAC units
- Downloadable and can be stored/run from a USB drive
- Selectable filter transaction reports

Door Controllers

Keyscan door controllers give you unmatched access control system design flexibility. Our Keyscan CA series access control units will satisfy virtually any new access control system application or augment any existing Keyscan systems while, in many cases, utilizing existing infrastructure including credentials.

Keyscan CA series door controllers feature:

- Network TCP/IP ready (with NETCOM)
- Easily configurable reader settings supporting many Wiegand protocols
- Up to 6000 transactions retained in transaction buffer
- Auto-transfer protocol uploads transaction buffer when communication is re-established after an interruption
- Dual processors
- Expanded flash memory allows for 45,000 credentials (90,000 with special order hardware)
- Lock down and global communication among multiple ACUs, server and sites (requires CIMs and CIM Link)
- Removable terminal blocks
- Accommodates 512 time schedules and 511 group levels
- Multiple inputs and outputs for expansion capability



CA8500 8-reader access control unit

- Includes:
- CA8500B ACU board
 - 2- OCB8 relay boards
 - 1 - DPS-15 power supply
 - 1 - black metal enclosure with lock and tamper switch



CA4500 4-reader access control unit

- Includes:
- CA4500B ACU board
 - OCB8 relay board
 - 1 - DPS-15 power supply
 - 1 - black metal enclosure with lock and tamper switch



CA250 2-reader access control unit

- Includes:
- CA250B ACU board
 - OCB8 relay board
 - 1 - DPS-15 power supply
 - 1 - black metal enclosure with lock and tamper switch

CA150 – Single Door PoE Equipped Controller

When it comes to performance, and overall capability, the CA150 is comparable with our full line of access control units. CA150 is ideal for a single-door deployment or to augment an existing system with a need for one additional door.

- Network connectivity with built-in PoE ready TCP/IP module
- PoE mode powers reader, strike, and other auxiliary devices, up to 680mA.
- DHCP supported
- Dual Processors
- Flash Memory
- Two reader ports



Elevator Floor Controllers

The Keyscan EC series elevator floor controllers are designed to secure office or residential floors by prompting credential holders to present their assigned credential when using an elevator. Our elevator floor controllers leverage the same architecture and software as the CA series door controllers.

Keyscan EC series door controllers feature:

- Network TCP/IP ready (with NETCOM)
- Easily configurable reader settings supporting many Wiegand protocols
- Up to 6000 transactions retained in transaction buffer
- Auto-transfer protocol uploads transaction buffer when communication is re-established after an interruption
- Dual processors
- Expanded flash memory allows for 45,000 credentials (90,000 with special order hardware)
- Global communication among multiple ACU/ECUs, server and sites (requires CIMs and CIM Link)
- Removable terminal blocks
- Accommodates 512 time schedules and 511 group levels
- Multiple inputs and outputs for expansion capability




**EC2500
2 Cab Elevator Floor
Access Control Unit**
Supports 2 Cabs with 2 readers
(8-floor control, expandable to 16 with optional OCB8 relay boards)

Includes:

- EC2500B ACU board
- 2 - OCB8 relay boards
- 1 - DPS-15 power supply
- 1 - black metal enclosure with lock and tamper switch

Best suited for two elevators servicing all floors and does not require individual unique control (eg: service elevator)



**EC1500
1 Cab Elevator Floor
Access Control Unit**
(8-floor control, expandable to 40 with optional OCB8 relay boards)

Includes:

- EC1500B ACU board
- 1 - OCB8 relay board
- 1 - DPS-15 power supply
- 1 - black metal enclosure with lock and tamper switch

Best suited for elevator banks that require unique floor control such as service elevators.



SMART elevator system integration

Keyscan systems can also integrate with select SMART elevator passenger management systems from KONE. These innovative elevator dispatch systems manage building traffic by grouping passengers, for the same destinations, into the same elevator.

- Improves efficiency of building and elevator traffic.
- Reduces waiting and travel times.
- Passengers present their existing Keyscan credential to an elevator kiosk to utilize the system.
- Keyscan Aurora authenticates user permissions and floor access to grant or deny access to destination floors.
- Provides a full report on all elevator activity through Keyscan Aurora reporting structure.

Contact your Regional Sales Manager for full details and requirements.

Keyscan 13.56MHz Reader Series



K-SMART3 Mobile-Ready Reader

K-SMART3 offers unrivalled performance and reliability when coupled with Keyscan K-SECURE credential series featuring Keyscan's proprietary elite key and 36-bit formats for enhanced reader and credential encryption. K-SMART3 means high-caliber access control with the freedom to use smart cards or your smartphone.

- Compatible with legacy K-SMART readers using K-SECURE 1K & 4K credentials; as well as ISO 14443 contactless non-proprietary smartcards (reading card serial number only).
- Support for Keyscan mobile credentials with no added programming.
- Will function with non-Keyscan access control systems*.
- Simple 2 in 1 unit supports mullion or single gang installation applications.

* Dedicated features must be turned off using K-PC-2 programming card when used with Keyscan PC1095 panels or all non-Keyscan systems.



K-SKPR Smartcard Reader & Keypad

The new Keyscan smartcard reader and keypad offers users the convenience of a contactless credential with the enhanced security that only a smartcard reader, keypad and credential combination can offer.

- Built-in support for smartcard security and encryption
- Keypad offers dual verification security
- A built-in "heartbeat" monitors reader communication advising end-users if any type of tamper or malfunction is detected
- Designed to function with Keyscan K-SECURE 1K and 4K, K-SF-1K, K-TX2-1K or ISO 14443 (CSN) type credentials.



K-SMART Smart Card Reader

This Keyscan contactless smartcard reader offers users the convenience of a contactless credential with the enhanced security that only a smartcard reader and credential combination can offer.

- Built-in support for smartcard security and encryption
- A built-in "heartbeat" monitors reader communication advising end-users if any type of tamper or malfunction is detected
- Designed to function with Keyscan K-SECURE 1K/4K, K-SF-1K, K-TX2-1K or ISO 14443 type credentials.

Keyscan 13.56MHz Credential Series



K-SECURE Series - 13.56 MHz Smartcard Credentials

Keyscan K-SECURE credentials are equipped with numerous anti-counterfeiting and card anti-duplication technologies and a robust AES multilayer encryption technology offering greater security.

- Complies with international interoperability (ISO14443) standards for 3rd party applications*
- ISO printable
- Keyscan 36-bit format for even more security over standard 26-bit 125kHz credentials
- Available in 1K and 4K formats, designed to function with Keyscan K-SMART series readers
- Also available in a 1K smart FoB (K-SF-1K) and 4-button RF Transmitter (K-TX2-1K)

* Contact Keyscan for using data sectors

Keyscan Mobile Credential

– access control solutions for a digitized world.



Keyscan iPhone



Keyscan Android



Keyscan Merges Security and Convenience

Keyscan Mobile Credential is a cloud-based credential delivery app for use with new or existing Keyscan access control systems equipped with K-SMART3 BLE Readers and Keyscan Aurora software version 1.0.16.0 or later.

Simple Enrollment

Using Keyscan Aurora software, System Administrators can issue mobile credentials to authorized users' supported iOS or Android mobile devices. Users download the Keyscan Mobile Credential App from their respective app store. When the app is registered, users can begin to receive mobile credentials from their System Administrator. With the app enabled, the mobile credential allows the user to authenticate access permissions at all designated doors, elevators, parking gates and other entry/exit points using their mobile device.

Benefits of Keyscan Mobile Credentials:

- Non-intrusive app with a simple one-time mobile device registration
- Mobile credentials remain secure and protected behind password or biometric security of a mobile device
- No on-boarding process
- No manufacturer 'cloud' portal account required
- User can store up to 10 mobile credentials on a single device
- No BLE activation or programming is required at each reader
- Manage user data, purchase and distribute mobile credentials directly through Keyscan Aurora Version 1.0.16.0 (internet connectivity and email client set up also required)

How to Purchase:

- Mobile credentials can only be purchased direct from dormakaba Canada Inc.
- Part #K-BLE or K-BLE-10.
- To inquire about, or purchase, mobile credentials, contact our mobile credential administrator at 1 888 539-7226.
- K-SMART3 BLE readers and Keyscan Aurora software can be purchased at your preferred distributor.

HID Mobile Access

– access control solutions for use with Keyscan systems.



HID Mobile Access, which leverages Seos® as its underlying credential technology, offers these key benefits:

- User Convenience: Users can now use their go-to mobile device to gain more convenient and efficient access throughout a Keyscan controlled facility.
- Operational Efficiency: Using HID Global's online Secure Identity Services portal, administrators can create, manage, issue and revoke credentials.
- Higher Security: HID Mobile Access uses a cloud-based Trusted Service Manager, SEOS credential technology, and Secure Identity Object technology to keep data secure.



From mobile-enabled readers and secure Mobile IDs, to the cloud-based management portal, HID Mobile Access technology is built to work seamlessly together.

- HID Mobile Access Portal features a user-friendly interface for administrators
- Simple enrollment for end-users through our intuitive App
- Each transaction is unique to ensure privacy
- Access rights can be easily managed by an administrator at any time
- Highly secure

To inquire about, or purchase, HID mobile credentials, contact our mobile credential administrator at 1 888 539-7226.



Inside HID Mobile Access

HID Global's Mobile Access Portal and App enable organizations to efficiently deploy and manage mobile users with confidence and delivers a dynamic mobile solution.

- HID Mobile will function on all Keyscan systems utilizing:
- Keyscan Aurora Ver 1.0.14 (higher) or System VII software
- Keyscan KR10SOM, KR40SOM or KRK40SOM readers



Keyscan iCLASS 13.56MHz Reader Series



Keyscan iCLASS® SE OS Readers

Keyscan's iCLASS® SE readers featuring SEOS® technology. SEOS offers the freedom to use smart cards or smartphones with best-in-class security and privacy protection.

- Advanced technology providing the highest security.
- Can meet virtually any installation requirement.
- Supports HID Mobile access credentials.

Available NFC/BLE models:

- KR10SOM (mullion)
- KR40SOM (single-gang)
- KRK40SOM (with keypad)

Available standard models:

- KR10SO (mullion)
- KR40SO (single-gang)
- KRK40SO (with keypad)



Keyscan iCLASS® SE Readers (for new installations)

Keyscan iCLASS SE goes beyond the traditional smartcard model to offer a secure identity data structure based on Secure Identity Object (SIO), a new portable credential methodology.

- Multi-layered security ensures data authenticity and privacy.
- Will function only with iCLASS SE credentials.
- Supports Keyscan elite key for extended security

Available models:

- KR10SE (mullion)
- KR40SE (single-gang)
- KRK40SE (with keypad)



Keyscan iCLASS® SE Legacy Readers (for use with existing installations)

iCLASS readers and credentials make access control more versatile and provide security through encryption and mutual authentication between the card and reader. iCLASS SE legacy readers are user-friendly and deliver the convenience and reliability of proximity technology.

- Designed to be 'backwards compatible' to work in conjunction with environments using previously installed iCLASS security technology.
- Functions with both iCLASS SE and iCLASS SR Legacy credentials.

Available models:

- KR10L (mullion)
- KR40L (single-gang)
- KRK40L (with keypad)



Keyscan iCLASS 13.56MHz Credential Series



Keyscan iCLASS® SEOS® Credentials

Keyscan's K18KSEOS iCLASS® SEOS™ smart card is ideal for organizations with stringent security requirements for their credential solution. It functions with iCLASS SE® SEOS platform, and delivers superior data integrity and privacy protection by leveraging the latest cryptographic algorithms.

Available model:

- K18KSEOS - ISO 8K smartcard



Keyscan iCLASS® SE Credentials

iCLASS SE credentials utilize a Trusted Identity Platform (TIP) architecture for advanced applications, mobility and heightened security. These credentials have the exclusive Keyscan Elite Key feature and are specifically designed to function only within Keyscan iCLASS SE environments.

Available models:

- KC2K2SE clamshell card
- KI2K2SE ISO smartcard
- KF2K2SE smart fob



Keyscan iCLASS® SE Legacy Credentials

iCLASS offers customers a multiple layer of card-to-reader security. These credentials have the exclusive Keyscan Elite Key feature and are designed to function within Keyscan iCLASS SE Legacy environments.

Available models:

- KC2K2SR clamshell card
- KI2K2SR ISO smartcard
- KI16K16SR ISO 16K smartcard
- KF2K2SR smart fob



Keyscan Ultra-High Frequency Reader & Credential Series



Keyscan KU90UHF Long-Range Reader

With advanced encryption technology, it delivers a secure ultra-high frequency solution that function seamlessly with Keyscan systems. Built with a rugged housing that protects the antennae and electronics from elements. The readers are also built on the VESA standard and do not require custom mounting hardware. Once installed, the KU90UHF can be locally configured via Ethernet port and a user-friendly web interface for ease of maintenance.

- Read range up to 5 meters (16 ft)
- Convenient: discreet hands free solution
- Field configurable for easy maintenance
- Secure identity object (SIO) technology compliant



Keyscan KI4KSEUHF Dual UHF/SE Credential

The KU90UHF reader issues a password to obtain access to secured areas of the card's memory. Secure Identity Object (SIO) data model adds a layer of encryption and authentication for advanced security.

This UHF smartcard meets strict ISO standards for thickness and can be used with high definition printers for custom artwork or photo identification imprinted directly on the card.

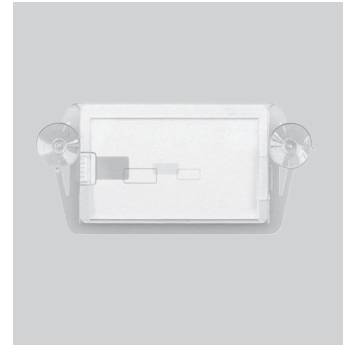
- UHF technology can be read from up to five meters
- Functions with KU90UHF long-range reader
- Secure Identity Object (SIO) enabled, for multi-layered security



Keyscan KI4KSEUHF Dual UHF/SE Credential

This smart card combines UHF technology with Keyscan iCLASS SE technology, offering a single-credential solution for both door and parking/gate access. Available in packages of 50 credentials. This SIO® enabled UHF/ iCLASS® credential can be read from distances of up to five meters (16 ft) for long-range identification and will also function in iCLASS SE environments.

- Ultra-High Frequency format can be read from up to 5 meters from the KU90UHF reader
- 13.56MHz format for use with iCLASS SE standard profile readers
- 4K memory with 2 application locations
- Keyscan high security format works with Keyscan iCLASS SE readers



Keyscan WSHLDMT Windshield Credential Mount

Optional windshield mount for KI4KSEUHF credential only. Suction cup mount allows semi-permanent mounting in the transponder location. Check vehicle manual for specific location. Available in packages of 10 holders.

Keyscan 125kHz Reader Series



Keyscan K-PROX3 Proximity Reader

K-PROX3 is a reliable and affordable reader featuring multiple mounting options, heartbeat intelligence, and anti-tamper capability. K-PROX3 offers unique features designed for exclusive use with Keyscan's Present3 and facility lockdown function (with system firmware 9.39 or higher).

The K-PROX3 is the ideal choice for Keyscan access control systems with 125 kHz proximity reader requirements.

- On board beeper to generate audible tones or sound a local "door-held-open" alert
- Convenient, all-in-one, single gang and mullion mounting options
- Anti-tamper "heartbeat" intelligence triggers alarm conditions when the signal is interrupted
- Can function with legacy Keyscan systems (PC 1095) or other manufacturer's systems when unique features are disabled with the optional K-PC1 programming card.



Keyscan K-KPR Proximity Reader/Keypad

The Keyscan K-KPR reader and keypad provides a sleek finish with clear LED illumination for access granted and denial indications.

- On board beeper to generate audible tones or sound a local "door-held-open" alert
- Epoxy encased and well-suited for both interior or exterior use
- Impressive read range
- Features dual verification security by prompting both a credential and/or PIN for access control authentication



Keyscan K-VAN Vandal Resistant Proximity Reader

K-VAN is constructed of a solid stainless steel body and fibertex, bullet resistant technology. It's an ideal proximity reader for indoor or outdoor applications where aggressive behavior, crime or high-threat environments could be expected.

- Proximity RFID technology
- Fibertex vandal and bullet resistant insert
- Compact size with optional tamper-proof blind mounting

Keyscan 125kHz Credential Series



Keyscan CS125-36 Card Credential

The Keyscan CS125 standard proximity clamshell cards are designed to be used with Keyscan proximity readers K-PROX3, K-PROX2, K-KPR, K-VAN as well as most HID and Farpointe 125kHz technology readers.

- Available in Keyscan 36 bit format.
- Up to a 4" read range
- An affordable alternative to other 125kHz technology credentials.
- Will function with Keyscan, Farpointe and most HID 125 kHz technology readers.

Keyscan K-TX2 & K-INTX2 RF Transmitters

The Keyscan selection of RF transmitters is a simple way to grant access in parking gate, garage and other long-range read access control environments. They can also function within your facility.

Available Keyscan RF transmitters for proximity and long-range access control environments:

- K-TX2 – 36 bit RF transmitter with 36 bit embedded coil for use with Keyscan, Farpointe and HID 125kHz readers
- K-INTX2 – 36 bit RF transmitter with 36 bit embedded Indala coil for use with Keyscan Indala 125kHz readers
- K-TX2-1K, smart RF transmitter. Functions with Keyscan K-RX, K-SMART3, K-SMART, and K-SKPR 13.56MHz readers.

A simple way to grant access in parking gate, garage and other long-range read access control environments.

Farpointe & HID 125kHz Technology Credentials

Farpointe and HID 125 kHz readers and credentials function equally well on Keyscan systems.

Contact your Electronic Access and Data Regional Sales Manager if you require more information on Farpointe or HID 125kHz readers and credentials.

All credentials sold through Keyscan are 36 bit format. Standard 26-bit credentials are available through RCI. Contact your EAD Regional Sales Manager for details.

Farpointe 125kHz Reader Series



P-620-H Reader & Keypad

The P-620-H reader with keypad will function on Keyscan access control systems by complying with the Wiegand communication protocol. Offering a read range up to 5 inches, it makes an ideal and cost effective alternative for other brands of 125 kHz readers. They offer value-add features and can support several proximity card and tag technologies including Keyscan 36bit format.



P-710 Enhanced Range Reader

The P-710-H enhanced range reader will function on Keyscan access control systems by complying with the Wiegand communication protocol. Offering a read range up to 15 inches, it makes an ideal and cost effective alternative for other brands of 125 kHz readers. They offer value-add features and can support several proximity card and tag technologies including Keyscan 36bit format.



P-900-H Long Range Reader

The P-900-H long range reader will function on Keyscan access control systems by complying with the Wiegand communication protocol. Offering a read range up to 20 inches, it makes an ideal and cost effective alternative for other brands of 125 kHz readers. They offer value-add features and can support several proximity card and tag technologies including Keyscan 36bit format.

These Farpointe readers will function with these credentials:

- Keyscan CS125-36 (36bit)
- Keyscan K-TX2 4-button RF fobs
- Farpointe PSM-2P-H ISO card; PSK-3-H fob; PDT-1-H tag
- HIDC1325 (36bit); HIDC1386 (36bit); PROXKEYIII (36bit)
- Will also function with 26-bit credentials (panel settings may be required).

Farpointe 125kHz Credential Series



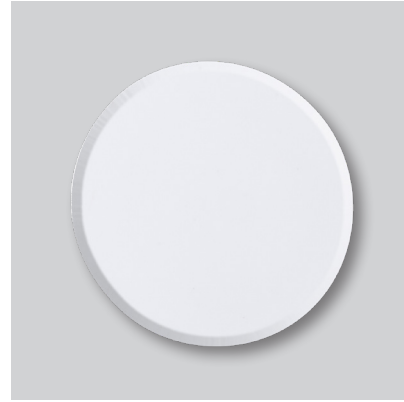
PSM-2P-H ISO Card Credential

For those who utilize photobadging this ISO graphics quality card is ideal. Ready for use with any dye-sublimation card printer. Available in Keyscan 36 bit format. Also available in 26 bit format through RCI.



PSK-3-H Fob Credential

For those who prefer a fob on a key ring as opposed to a card or tag credential, look to this Farpointe PSK-3-H fob. Available in Keyscan 36 bit format. Also available in 26 bit format through RCI.



PDT-1-H Prox Tag Credential

This convenient proximity tag can be adhered to an existing ID badge or the case of a mobile phone to convert it to an easy-to-use access control credential. Available in Keyscan 36 bit format. Also available in 26 bit format through RCI.

Farpointe credentials are suitable and less expensive alternatives to traditional prox credentials.

These Farpointe credentials will function with these readers:

- Keyscan K-PROX3, K-PROX2, K-KPR, K-VAN;
- Farpointe P-620-H, P-710-H and P-900-H
- Any 125kHz reader using a Wiegand protocol

Keyscan Wireless RF Access Control Solutions



Keyscan K-RX Wireless Receiver & Transmitters

The Keyscan K-RX wireless receiver is a good selection for parking garage, gate and many other long-range applications.

Transmits a signal via hardwired Wiegand for access control panel authentication.

Works with the K-TX2, K-INTX2 or K-TX2-1K transmitter FOBs from up to 200 feet. K-TX2 or K-INTX2 both act as a regular FOB when used within your facility.

- Receiver provides four hardwired 36 bit Keyscan wiegand outputs for connection to Keyscan access control units.
- 4-button transmitters offer support for multiple gate and/or receiver installations
- Receiver offers range control from 12" (0.3 cm) to 150' (45.7 meters)
- RF operation utilizes a 433 MHz frequency
- Employs a rolling 40 bit code with a 256 bit key for encrypted anti-sniffing and anti-playback protection
- Transmitters tested to 35,000 button presses



E-Plex[®] Integrated Wireless Locks



E-Plex 7900 RFID Wireless Lock

Built for performance, the versatile E-Plex 7900 functions in standalone or wireless modes for cylindrical applications.

E-Plex 7900 offers more compatibility. With variable models* each designed to function with a designated list of credential types, E-Plex 7900 can be trusted in many access control environments.

- Keyscan, HID, Farpointe 125kHz,
- Keyscan K-SECURE 1K/4K
- Keyscan Mobile Credentials
- MiFare - CSN only
- iCLASS legacy (Keyscan 36 bit elite key)
- Keyscan 36 bit SEOS (public key)

Integrates with Keyscan Aurora software V 1.0.16 or higher, using a ZigBee wireless network gateway (with firmware 2.0.76 or higher), which creates a two-way communication from lock to Aurora software.

E-Plex 7900 can be utilized in conjunction with E-Plex 3600/3700 series and E-Plex 5600/5700 series wireless locks.

Disclaimer:

* Keyscan Aurora supports all models. Not all models available through Keyscan. Contact your local distributor or contact your EAD Regional Sales Manager.



E-Plex 5600/5700 Wireless Locks

E-Plex wireless locks provide a cost effective and scalable solution for adding wireless locks to any Keyscan access control environment.

E-Plex wireless locks integrate with Keyscan Aurora software, offering two-way communication from wireless locks to your Keyscan Aurora software using a ZigBee gateway and routers. E-Plex wireless locks offer a flexible and scalable path to true hybrid access control.

Key Features:

- E-Plex 5600 functions with K-SECURE and other 13.56MHz smart card credentials.
- E-Plex 5700 functions with Keyscan, CS125-36; Farpointe and HID 125kHz technology credentials.
- Creates a hybrid access control system using wired and wireless access control.
- Ideal for quick and cost effective system expansions.
- Each gateway supports up to 25 E-Plex wireless locks with firmware 3.75.
- Wireless range up to 100'.

Also available as a stand-alone lock solution.

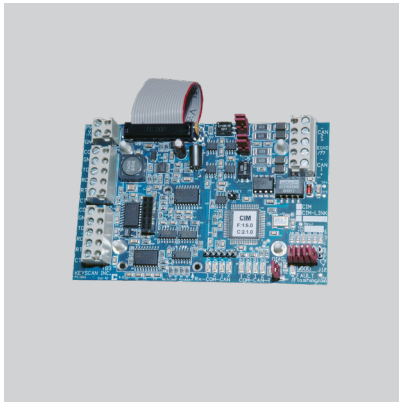


PowerPlex 2000 Keyless Self-Powered lock

PowerPlex 2000 is a self-powered, eco-friendly electronic lock that does not require batteries or other external power sources. The lock generates its own power with every turn of the lever with virtually no maintenance costs. Employing PowerStar™ technology, PowerPlex uses new super capacitor technology to store power longer and more efficiently.

PowerPlex allows controlled access at less sensitive or frequented areas such as storage and utility rooms in any facility.

Keyscan Network and Communication Modules

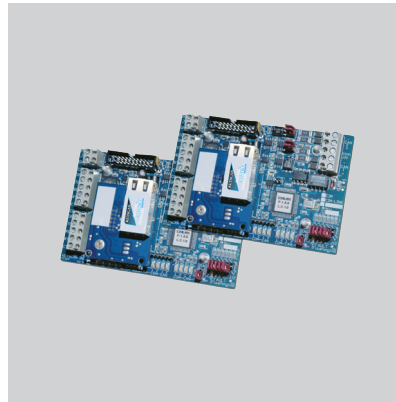


CIM (Communications Interlink Module)

A communication control module designed to use a CAN Bus communication network.

- Provide optimized server to Access Control Unit (ACU) communication.
- Gives users a new ACU to ACU network providing inter-panel communication for global functions.

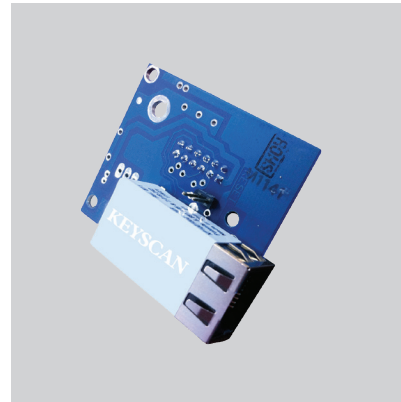
The CIM also includes enhanced device-based diagnostics and improved communication speeds.



CIM-Link (Global Network Connectivity Module)

The Keyscan CIM-Link is a TCP/IP companion module, which incorporates multiple CIM CAN Bus communication loops into a single global infrastructure via LAN/WAN network.

- Maximizes system design options.
- Promotes greater global communication flexibility across your facility
- Expands ACU to ACU functionality to multiple independent CAN Bus global networks.



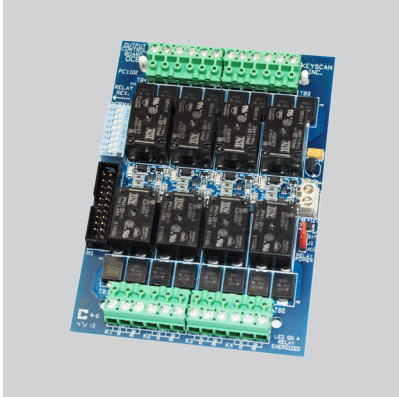
NETCOM2P TCP/IP Plug-on Communication Adaptor

Networking a Keyscan access control unit is made easy by using the Keyscan NETCOM2P plug-on adaptor.

- Allows for maximum system design options.
- Designed to plug directly onto the CIM to establish network connection OR can plug directly onto ACU board for direct network connectivity.
- Also available as off-board module with DIP switch settings (NETCOM2).

Encrypted version also available AES Rijndael 256 bit (NETCOM6P).

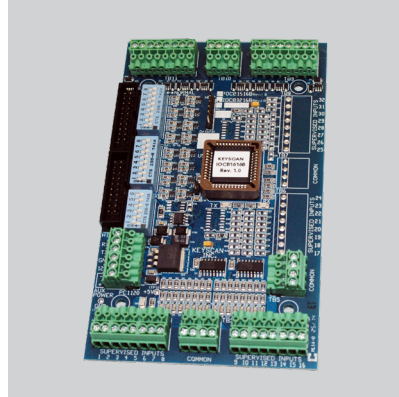
Keyscan Peripheral Products



OCB8 Relay Board

The Keyscan OCB8 is a Form-C relay output board with durable and reliable construction for long-term use. For use with Keyscan door and elevator floor controllers wherever you need a dry contact closure for auxiliary equipment.

- Expand floor control for Keyscan EC1500 and EC2500 elevator floor controllers.
- Add auxiliary outputs to Keyscan CA4500 and CA8500 door controllers to trigger response such as sirens, alarms, strobe lights or further restrict access.
- Time programmable (via software).
- DIP switch bank allowing easy changes to state of relays.



IOCB1616B Input and Output Expansion Board

When high-level system design calls for additional input and output capabilities, look to the Keyscan IOCB1616 expansion board.

- Provides 16 additional inputs with 16 \ additional open collector outputs.
- Easy to add relay output option if desired.
- Connect up to four (4) IOCB1616B boards to CA4500 and CA8500.
- May be remote mounted up to 4000 ft from its control panel
- Also available with a separate metal enclosure and power supply board Part no. IOCB1616.

Ideal for monitoring exit only doors, glass breaks, motion detectors and any other sensing device throughout your Keyscan system.



WIEEX2 Wiegand Extender Board

When circumstances dictate a long cable run between control panel and reader, exceeding 500 feet, rely on the Keyscan WIEEX2 Wiegand Extender.

- Converts the Wiegand signal to standard RS485.
- Provides a communication range of up to 4000 feet between WIEEX2 receiver and WIEEX2 transmitter while using standard CAT5 cable between units.

Keyscan Access Control Unit Features

Access Control Unit	CA150	CA250	CA4500	CA8500	EC1500	EC2500
Doors/Elevator Floors Supported	1 door	2 doors	4 doors	8 doors	1 cab (up to 40 flrs)	2 cabs (up to 16 flrs)
Reader Ports	2 (in/out)	2	4	8	1	2
Multi ACU Compatibility	Yes (Ethernet)	Yes	Yes	Yes	Yes	Yes
System Status LEDs	Yes	Yes	Yes	Yes	Yes	Yes
Dual Processors	Yes	Yes	Yes	Yes	Yes	Yes
Flash Memory	Yes	Yes	Yes	Yes	Yes	Yes
Power Fail Output	NA	Yes	Yes	Yes	Yes	Yes
Floor Monitor Inputs (supervised)	NA	NA	NA	NA	Yes	Yes
Inputs						
Request to Exit (RTE) Inputs (supervised)	1	2	4	8	NA	NA
Door Contact Inputs	1	2	4	8	NA	NA
Auxiliary Inputs (supervised)	2	8	16	16	NA	NA
I/O Input Expansion (with IOCB1616)	NA	NA	64	64	NA	NA
Outputs						
Auxiliary Output Relays	1	2	4	8	NA	NA
Expansion Auxiliary Output Relays	NA	NA	8	8	NA	NA
I/O Outputs (with IOCB1616)	NA	NA	64	64	NA	NA
Door Output Relays	1	2	4	8	NA	NA
Capacity						
No. of Credential-holders	45,000 (90,000*)	45,000 (90,000*)	45,000 (90,000*)	45,000 (90,000*)	45,000 (90,000*)	45,000 (90,000*)
Transaction Buffer	6000	6000	6000	6000	6000	6000
Schedules	512	512	512	512	512	512
Groups	511	511	511	511	511	511
Holiday Dates	64	64	64	64	64	64
Connectivity						
Ethernet Ready	Equipped	Optional	Optional	Optional	Optional	Optional
PoE - Power over Ethernet* (IEEE 802.3af)	Equipped	NA	NA	NA	NA	NA
Global Integration ((CIM Required)	Network/ Server Dependent	Capable	Capable	Capable	Capable	Capable
CMAC Reverse IP	Equipped	Optional	Optional	Optional	Optional	Optional
Serial Communication	Yes	Yes	Yes	Yes	Yes	Yes

© dormakaba Canada, (2018). Information on this sheet is intended for general use only. *Special hardware order. †POE under license with Chrimar Systems Inc., US Patents 8,155,012 - 8,942,107 - 9,049,019. dormakaba Canada reserves the right to alter designs and specifications without notice or obligation. Printed in Canada.

We make access in life smart and secure.

You can rely on dormakaba for our integrated Electronic Access & Data portfolio of products that merge security and convenience for occupants while monitoring the activities of all visitors to any facility.



Keyscan networked access control system

Keyscan Aurora access control software



Keyscan readers & credentials

Keyscan mobile credentials



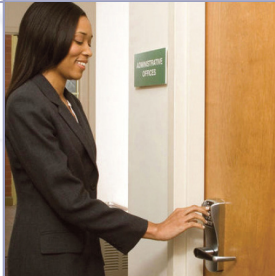


RCI electromagnetic locks



RCI electric strikes

Simplex & PowerPlex keyless locks



E-Plex wireless & stand-alone locks

dormakaba Canada Inc.
901 Burns St., E.
Whitby, Ontario
Canada L1N0E6
Tel: 888-539-7226
orders.canada@dormakaba.com

www.dormakaba.ca

