

AVC-ET91AVT(-W)

1080P HD-TVI IR AUTO FOCUS EYEBALL CAMERA

HD-TVI
CAMERA



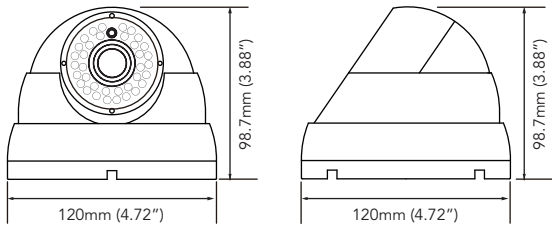
FUNCTIONS

- HD-TVI Solution
- 1/2.9" 2.4MP Sony Exmor CMOS
- HD 1080P & Analog Output
- True Wide Dynamic Range (WDR 120dB)
- 2.8 ~ 12mm MP Motorized Auto-focus Lens (ICR)
- 36 IR LEDs (Up to 95ft.)
- 0.01Lux@F2.0 (0Lux IR On)
- 3DNR Digital Noise Reduction
- ICR Filter Change Function
- Built-in OSD Controller & 2nd BNC Connector
- DC 12V (±10%)



DIMENSIONS

Unit : mm (inch)



FEATURES



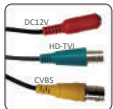
Smart IR™

Equipped with Smart IR™ technology which prevents overly exposed image due to IR reflection. It also balances out the night time image if IR is being reflected off of a closer object.



3-Axis Easy Installation Housing

Our eyeball style camera makes installation easy by utilizing its full 3-Axis gimbal design that can be mounted either on wall or ceiling and from indoor to outdoor applications.



Dual BNC Output

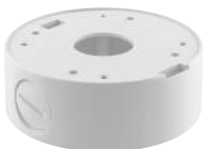
Dual BNC output provide full HD @ 30fps real-time HD-TVI video and CVBS (Analog) video simultaneously.

SPECIFICATIONS

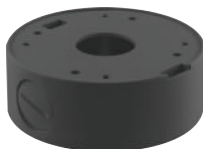
DESCRIPTION	AVC-ET91AVT(-W)
Image Sensor	1/2.9" 2.4 Megapixel Sony Exmor CMOS
Image Resolution	1920 x 1080
Scanning System	Progressive
Video Output	HD-TVI, CVBS
S/N Ratio	More than 50dB
Min. Illumination	0.02Lux (Sens-up x32)
Iris Adjustment	ALC / ELC
Lens	2.8 ~ 12mm MP Motorized Auto Focus Lens (ICR)
Electronic Shutter	Auto (1/30 ~ 1/60,000) / Auto (1/25 ~ 1/60,000) FLK
OSD Language	English / Chinese / Japanese / Korean
Backlight Compensation (BLC)	Off / HLC / BLC / WDR
Day & Night	Color / B/W / External / Auto
WDR	Off / Low / Middle / High
Auto Gain Control (AGC)	Level (0 ~ 20) Adjustment
White Balance	Auto / Auto-EXT / Preset / Manual
Privacy Masking	On / Off (Programmable 16 zones)
DNR	Off / Low / Middle / High
Smart IR (Anti-SAT)	Anti-SAT (0 ~ 20) Adjustment
LSC	On / Off
Gamma	0.45 / 0.5 / 0.55 / 0.6 / 0.65
Defog	On / Off
Digital Zoom	On / Off (x1 ~ x8.0)
Dead Pixel Compensation	Live DPC (Dead Pixel Correction) / DPC Set
Sens-up	Off / x2 ~ x32
Motion Detection	4 Areas
Digital Effect	Off / V-Flip / Mirror / Rotate
RS-485	Yes, UTC (Up-the-Coax)
IR LED	36pcs (95ft.*)
Input Voltage	DC 12V (±10%)
Power Consumption	DC IR Off: 200mA (Max.) / DC IR On: 550mA (Max.) AC IR Off: 190mA (Max.) / AC IR On: 370mA (Max.)
Operating Environment	-4°F ~ 140°F (-20°C ~ 60°C) / 10% ~ 90% Relative Humidity
Storage Environment	-4°F ~ 140°F (-20°C ~ 60°C) / 10% ~ 90% Relative Humidity

*IR distance range varies depending on the environment

ACCESSORIES



AVM-EDMTS-W



AVM-EDMTS-G