



>>> COVERT IP 2MP CAMERA

HEIGHT-STRIP COVERT IP CAMERA

IPHS243

- > Covert IP Camera in Height Strip Housing
- > Graduated and Color Coded Height Measurements in both U.S. and Metric Dimensions
- > Swivel Bracket for Horizontal and 5° Tilt Lever for Vertical Camera Adjustments eliminates need for Separate Bracket
- > 4.3mm Wide Angle Pinhole Lens for Double Door Coverage
- > Progressive Scanning for the Sharpest Video Motion Images
- > Exceptional Video Quality with 2 Mega-Pixel Full HD, 1920 x 1080 Resolution
- > Highly efficient H.264 Video Compression which Drastically Reduces Bandwidth and Storage Requirement
- > Wide Dynamic Range for High Contrast Lighting Conditions
- > Triple Streaming Simultaneously, H.264 and MJPEG Compression, up to 60-ips at 1080p Resolution
- > A Built-in Micro-SD Memory Card Slot Enables Local Storage of Video
- > Video Content Analysis (Analytics) Features such as Line and Field Detector
- > ATVision IP Remote Management Client Software for Windows and Mac PC's and Mobile Applications for Apple and Android Operating Systems
- > ONVIF Profile S Compliant
- > Advanced Intelligent Health Monitoring (AIHM) Alerts User to Abnormal Conditions
- > Composite Video Output, Digital Noise Reduction 3DNR, Digital Image Stabilization (DIS) and Corridor (Aisle) View Orientation Functions
- > Auto Power Switch, Hot Failover Capability
- > 12VDC/PoE Power Options



HEIGHT STRIP COVERT IP CAMERA

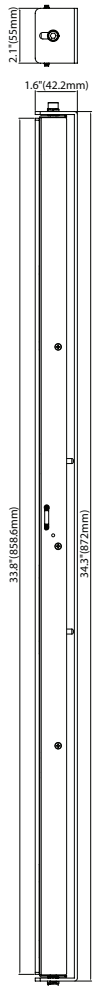
IPHS243

IP PRODUCT SERIES

SPECIFICATIONS

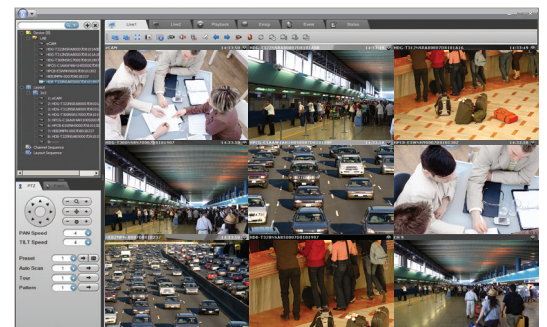
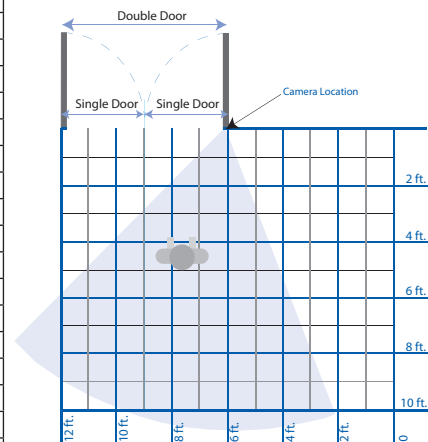
MODEL		IPHS243
C A M E R A	Lens	Megapixel Fixed Pin Hole 4.3mm F2.0
	Angle of View	70° (H)
	Image Sensor	1/2.8" Sony Exmor CMOS
	Min. Illumination	Color: 0.5Lux (F2.0, 50IRE)
	Scanning Mode	Progressive Scan
	Wide Dynamic Range	120dB
	Digital Zoom	ROI
	Noise Reduction	2DNR, 3DNR
	Exposure Control	Auto
	White Balance Control	Auto/Incandescent/Fluorescent/Outdoor/Manual
	Back Light Compensation	Enable/Disable Selectable
	Image Effects	Flip/Mirror/Aisle/Defog/DIS
	Flicker Free Mode	60Hz/50Hz Selectable
	Shutter Speed	Auto (1/10,000~1sec), Manual
N E T W O R K	Video Compression	H.264 (High, Main, Baseline Profile), MJPEG
	Video Resolution	1920x1080, 1280x1024, 1280x720, 704x576/480, 640x480, 352x288/240, 320x240
	Video Frame Rate	60fps in all Resolutions
	Video Streaming	50/60fps (Dual Stream : H.264x1, MJPEGx1) 25/30fps (Triple Stream : H.264x2, MJPEGx1)
	Protocols	TCP/IP, UDP, IPv4/v6, HTTP, HTTPS, QoS, FTP, UPnP, RTP, RTSP, RTCP, DHCP, ARP, Zeroconf, Bonjour
	Video Contents Analysis (VCA)	Face Detector, Tampering, Line Detector, Field Detector
	FTP Uploading	MJPEG
	Privacy Mask	8 Programmable Zones
	Motion Detection	16 Programmable Areas
	Event Notification	E-mail, FTP, Notification Server, XML Notification, AIHM
	Event Buffering	Pre and Post Alarm
	Manual Trigger	4 Programmable Triggers
	Security	Multi User Authority, IP Filtering, HTTPS, SSL
	Network Time Sync	Yes
	Software Reset	Yes
	Auto Recovery	Yes
	Upgrade	Web Browser or SmartManager
	SD Recording Mode	Event, Continuous
	Max. User Connection	Live : 10 Users, Playback : 3 Users
	Composite Video Out	BNC
G E N E R A L	Ethernet	RJ-45 (10/100Base-T)
	Micro-SD Card	Micro-SDHC, Class 6 or above Rec'd (Max. 32GB)
	Operating Humidity	0 ~ 90% (non-condensing)
	Operating Temperature	14° F - 122° F (-10°C - +50°C)
	Power Source	PoE (IEEE802.3af compliant, Class0), DC12V
	Power Consumption	DC12V - 250MA, 4W POE48V - 80MA, 4W
	Dimensions (D x H X W)	2.1 x 34.3 x 1.6in (55 x 872 x 42.2mm)
	Weight	3.3lbs (1.44kg)
	Conformity Certifications	FCC, CE

DIMENSIONS



Line drawing not to scale.

Range of View with H.S. Camera



ATVision IP Remote Management Software

Minimum System Requirements for ATVision IP Software

Operating System: Microsoft Windows 7 or Apple Mac 10.10

CPU: Intel Core i5 processor

RAM: 4GB

Ethernet Connection: 100Mbps

Graphics Card: Gaming Rated, with 2GB at 1080p Resolution; 4GB at 4k resolution

Hard Disk Drives: 7200RPM and 64MB cache