



## >>>HD ANALOG, TRUE DAY/NIGHT, WDR, BULLET CAMERA



### BULLET CAMERA

# CB2212HD

- > High Definition Analog (HD Analog) over Coax Technology, utilizes existing Coax Cables & BNC Connectors, allowing Mega-pixel Video Images without any rewiring necessary
- > HD Analog Bullet Camera with 2MP, 1920 x 1080 Full HD Resolution
- > TVI, AHD, CVI or CVBS Protocol selectable --- Engineered to work with ATV's New HD Analog and Legacy DVR's for Maximum Stability and Performance
- > True Day / Night and Digital Wide Dynamic Range (DWDR) Functionality for all Lighting Conditions
- > Powerful IR LED Lights for 0Lux Night Time Operation up to 100ft
- > Sony Exmor CMOS Sensor with Progressive Scanning for the Sharpest Video Motion Images
- > 2.8 - 12mm Vari-focal Lens
- > Long Distance, Real-Time, Transmission of Video over 1600ft on RG6U Coax Cable
- > Back Light Compensation (BLC), Defog and Sens-Up Functionality
- > Digital Noise Reduction 3DNR, Video Motion Detection and Privacy Masking
- > OSD Control via Coax Cable using UTC
- > Supported by ATVision IP Remote Management Client Software for Windows and Mac PC's and Mobile Applications for Apple and Android Operating Systems
- > IP66 Weather Resistant Rated
- > Optional Mounts Available
- > 12VDC Power Source

# BULLET CAMERA

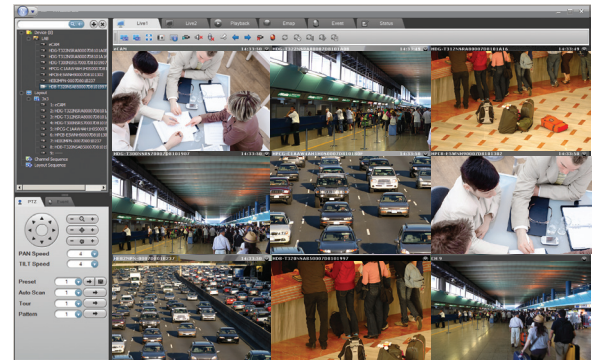
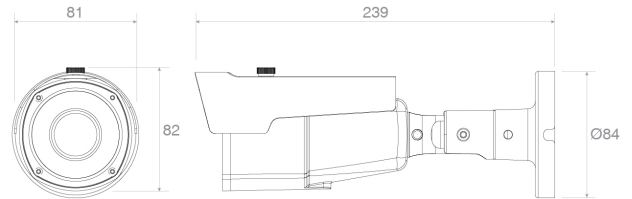
# CB2212HD

## HD ANALOG PRODUCT SERIES

### SPECIFICATIONS

MODEL		CB2212HD
C A M E R A	Lens	Varifocal 2.8~12mm F1.6
	Image Sensor	1/2.9" Sony Exmor CMOS
	Effective Pixels	1,985(H) x 1,105(V)
	Min. Illumination	Color: 1.0Lux@F1.6, 50IRE BW: 0Lux@IR LED On
	Scanning Mode	Progressive Scan
	Sync. System	Internal
	Day and Night Mode	True D/N (Auto, Color, B&W)
	Wide Dynamic Range	Digital
	Shutter Speed	Auto, 1/60, FLK ~ 1/50,000sec
	IR Illuminator	Quantity: 30 SMD IR LEDs Distance: Maximum 100ft indoor, 80ft outdoor *
F U N C T I O N S	S/N Ratio	More than 50dB (AGC off)
	Video Frame Rate	1920 x 1080 (TVI, AHD, CVI) or 700TVL (CVBS) @ 30fps
	Back Light Compensation	BLC, HSBLC
	Noise Reduction	2DNR, 3DNR
	White Balance Control	AWB, ATW, AWC, Indoor, Outdoor, Manual
	Image Effect	Freeze, Mirror, Negative Image, LSC (Shading), Defog
	Sens-up	Off, Auto(x2, x4, x6, x8, x10, x15, x20, x25, x30)
	Video Protocols	TVI, AHD, CVI & CVBS Selectable
	Video Mode	NTSC, PAL Selectable
	Motion Detection	4 Zones
G E N E R A L	Privacy Masking	4 Zones
	Defect Detection	Live DPC, White DPC, Black DPC
	OSD Setup	Coaxial Control (UTC)
	Power Input	2.1mm barrel connector
	Video Output	BNC Connector
	Video Selection	Dip Switch Cable
	Transmission Distance	Coax Cable, RG6U (5C-2V), 1650ft (500m); RG59 (3C-2V), 990ft (300m)
	Operating Humidity	0 ~ 96%RH (Non-condensing)
	Operating Temperature	-22°F~140°F (-30°C ~+60°C)
	Power Supply	12VDC ± 10%
Power Consumption	440mA (5.28W)	
Dimensions (W x H x D)	3.2 x 3.2 x 9.4in (81 x 82 x 239mm)	
Net Weight	1.32lbs (0.6kg)	
Ingress Protection	IP66	
Conformity Certifications	FCC, CE	

### DIMENSIONS



ATVision IP Remote Management Software

\*Maximum possible range in the best conditions. Actual experience may vary depending on the application and environmental conditions.

### ACCESSORIES

HJB400 Junction Box



HJB400