



INTELLIGENT VIDEO DRIVING PROFIT



Outdoor 3MP IP Dome with LED, Audio and external PIR

i3's Ax65W 3MP megapixel IP camera features 12 pcs of built-in white LED light that sets this camera apart from the competition. The intelligent white light allows Annexus 65W to function as a flood light when motion is detected by the camera or by a connected external PIR installed elsewhere. This unmatched practical feature cuts down on installation and energy costs and vastly improves the quality and usability of the nighttime video footage. Motion-triggered white light causes the subjects to look directly at the light source, ensuring a high-quality face shot every time.

This waterproof and vandal-resistant model is IP67- and IK10-compliant and is designed to withstand outdoor conditions, while also being suitable for the indoor installations. Corridor view is available for users that would like to view a hallway or a single store aisle. For outstanding quality audio recording, combine with i3's Mo-1 line level microphone (sold separately). This camera model can be surface-, pendant- or recess-mounted without the need for additional mounting brackets. These series can also be wall-, pole- and corner- mounted (goose-neck bracket and corner-mount assembly sold separately).

Mounting Options

*Mounting hardware sold separately

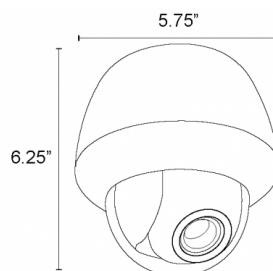
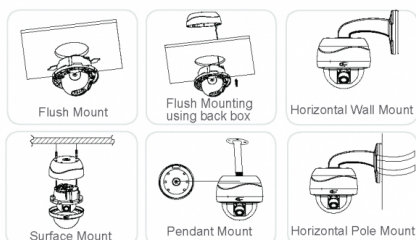


Image System	
Image Sensor	Progressive Scan CMOS 1/2.8"
Signal System	NTSC/PAL
Optical System	
Iris Control	Auto Iris
Focal Length	Motorized 3 - 10.5 mm
F-stop Range (F-number)	Wide: 1.4, Tele: 2.8
Angle of View	Wide: 90° (H) ~ 68° (V) Tele: 33° (H) ~ 24° (V)
Day/Night	Mechanical ICR
Defog Control	Yes (by PoE+/AC24V)
Electric	
Digital Noise Reduction	3D
Wide Dynamic Range (WDR)	Digital WDR
Minimum Illumination	0.02 lux F1.4 (Color mode) 0.01 lux F1.4 (BW mode) 0 lux w/ IR ON
Electric Shutter	NTSC: 1/7.5~1/10000 sec PAL: 1/6.25~1/10000 sec
On-board (Edge) Storage	1 x microSD/SDHC/SDXC slot up to 64GB. Card sold separately
Alarm Input	1 (PIR-triggered input)
Audio	
Audio In/Out	1/1
Audio Format	G.711 A-law/G.711 μ -law/AAC
Audio In/Out Level	Line Level
Network Specifications	
Video Streaming and Compression Method	Triple Streaming H.264 /MJPEG
Maximum Framerate vs Resolution	3MP (2048x1536) @ 30fps/25fps
Network Protocols	IPv4/6, TCP/IP, UDP/IP, FTP, ICMP, ARP, DHCP, HTTP, HTTPS, SMTP, IGMP, RTSP, RTP, RTCP, SNMP, TLS/TLS, UPnP, 802.1X
Security Access	Multiple privilege control with password protection
Users	1 Administrator, 5 Operators/Users

Other Features	
Other	Privacy Mask, Mirror Flip, Corridor View, Edge Defocus Detection, Edge Network Loss Detection, Edge Tamper Detection, Smart IR, Edge Motion Detection, Edge Analytics, Event- and schedule-based white light
Mechanism	
Angle Adjustment	Pan: $\pm 177^\circ$, Tilt: $0^\circ - 75^\circ$, Rotation: $\pm 177^\circ$
Dimensions (\varnothing x H)	$\varnothing 147\text{mm} \times 158\text{mm}$ ($\varnothing 5\frac{3}{4}\text{in} \times 6\frac{1}{4}\text{in}$)
Weight	1380g (3.04lb)
Connectors	Network: RJ-45 Power Input: AC24V, 2-pin spring terminal block Audio In/Out, Alarm (PIR) In, WLED 12VDC Output and PIR 12VDC Output: 8-pin removable terminal block
IR Distance	8pcs LED, 15m (49 ft)
White Light Distance	12pcs LED, 15m (49 ft)
Power Supply	
Power Requirement & Max. Consumption	PoE+/AC24V 25W
DC12V Power Output	up to 2.0W for PIR + up to 6.8W for Ext. WLED
Environment	
Operating Temperature	$-40^\circ\text{C} - 50^\circ\text{C}$ ($-40^\circ\text{F} - 122^\circ\text{F}$)
Operating Humidity	90%, non-condensing
Regulations, Ratings	
Regulations, Ratings	FCC Class B, CE, RoHS, IP67, IK10, ONVIF (Profile S)
Warranty	
Warranty	1 year parts and labor

RELATED PRODUCTS



DB60CPM
DB60CPM
Corner/Pole
Mount Bracket



DB60
DB60
Wallmount
Bracket



Mo-1
Mo-1 Outdoor
Omnidirectional
Microphone



www.i3international.com
1.866.840.0004

Canada Head Office
780 Birchmount Rd, Unit 16,
Toronto, ON M1K 5H4

i3 America (Nevada) Inc.
4001 Cobb International Boulevard,
Kennesaw, GA 30152