



- 4MP**
Resolution
- 
4.0mm Fixed Lens
- 
DMP Integration
- 
Smart IR™
- 
IP66 Rated
- 5YEAR**
Warranty

Summary

The DMP® series of MEGApix® IP cameras are seamlessly integrated into a DMP alarm panel, providing visual verification and data for alarms triggered in the DMP system. The cameras are easily integrated into any existing DMP system via the cloud. The camera comes in an IP66-rated and IK10-impact-resistant ultra low-profile vandal dome housing.

Features

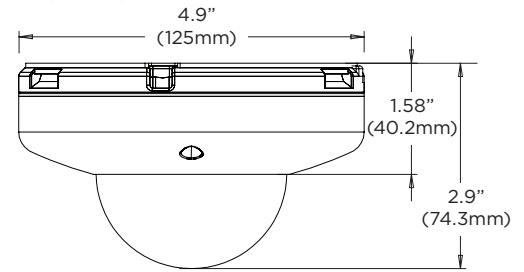
- 4MP 1/2.8" image sensor
- Star-Light Plus™ color in near-total darkness technology
- 4.0mm fixed lens
- DMP integration
- 50' Smart IR™ with intelligent camera sync
- Ultra low-profile vandal dome camera housing
- Smart DNR™ 3D digital noise reduction
- True day/night mechanical IR cut filter
- Auto gain control (AGC)
- Auto white balance (AWB)
- Motion detection
- PoE class 3 and DC12V
- UL listed
- IP66 environmental-rated dust-tight and water-resistant
- IK 10-rated impact-resistant
- 5 year warranty

Accessories (optional)



Dimensions

Unit: inch (mm)



Specifications



IMAGE	
Image sensor	4MP 1/2.8" CMOS
Total pixels	2560 (H) x 1440 (V)
Minimum scene illumination	0.16 lux (color)
	0.0 lux (B/W)
LENS	
Focal length	4.0mm, F2.0
Lens type	Fixed lens
Field of view (FoV)	82.3°
IR distance	50ft range
OPERATIONAL	
Shutter mode	Auto
Shutter speed	1/15 - 1/32000
Slow shutter	1/2
Auto gain control	Auto
Day and night	Auto
Smart DNR™ 3D digital noise reduction	3D-DNR
Flip	Yes
NETWORK	
LAN	RJ45 (10/100Base-T)
Video compression type	H.264
Resolution	2560x1440, 2.1MP/1080p, VGA
Frame rate	10fps
Video bitrate	2 Mbps
Bitrate control	Smart bitrate control - CVBR
IP	IPv4, IPv6
Protocol	TCP/IP, UDP, RTSP, NTP, SSL, DNS, DHCP
ONVIF conformance	Yes
Video management software	DMP
ENVIRONMENTAL	
Operating temperature	-4°F - 122°F (-20°C - 50°C)
Operating humidity	Less than 90% (non-condensing)
IK rating	IK10 impact-resistant
IP rating	IP66-rated
Other certifications	UL listed, CE, FCC, RoHS
ELECTRICAL	
Power requirement	DC 12V, PoE IEEE 802.3af Class 3 (adapter not included).
Power consumption	DC12V: max 5.9W PoE: max 7.2W
MECHANICAL	
Material	Aluminum vandal housing, polycarbonate dome
Dimensions	4.9" x 2.9" (125 x 74.3 mm)
Weight	0.92 lbs (0.42kg)
Warranty	5 year warranty